

# How to Change Input on LG TV Without Remote

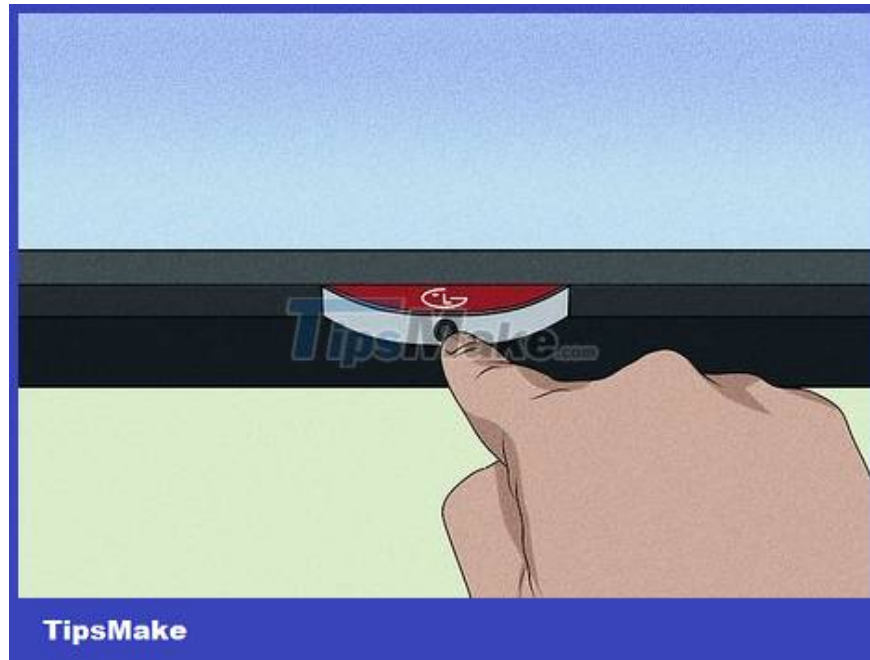
You lost your LG TV remote, or maybe the remote control battery is dead. It is very easy to change the input on the TV when there is no remote control. TipsMake today will show you how to change input on LG TV without remote.

## Change input with buttons on TV



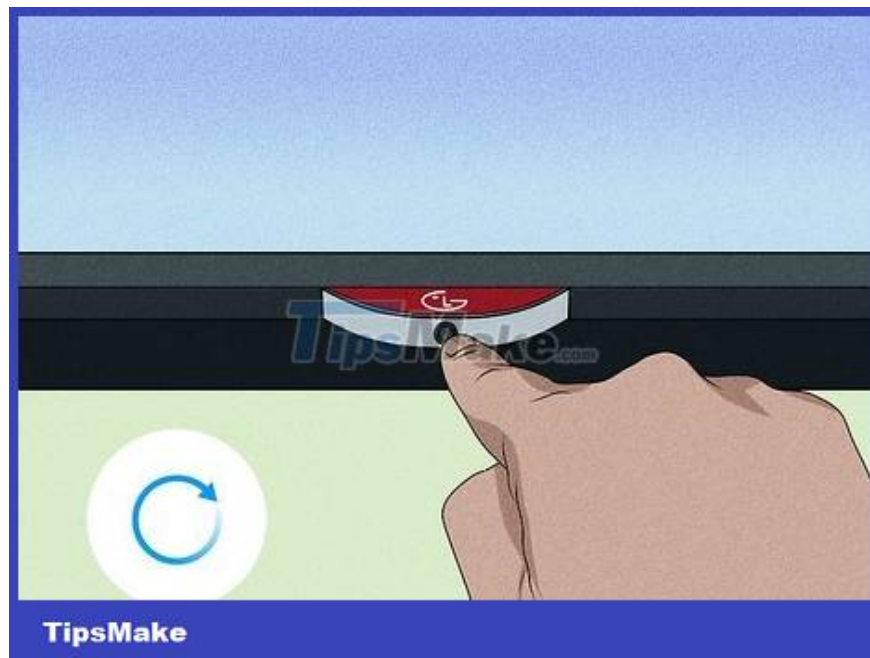
**Find the buttons on the LG TV.** LG usually arranges buttons along the bottom edge of the device, just below the LG logo.

On some models, the buttons will be on the back of the TV, along the bottom right.



**Turn on the TV.** Find and press the power button to turn on the TV.

If the power button is broken, you can hold down one of the volume or channel buttons for a few seconds to turn on the TV.



**Specifies which node is the input node.** Most LG TVs are equipped with 6 buttons: power button, volume up button, volume down button, channel up button, channel down button and menu button. On modern models, the power button also acts as an input button.

Older LG TV models also have an input button. Usually this button will be on the far left or right. If your TV has this button, this is the easiest method to switch inputs without a remote.

Although not very common, some other models are also equipped with a joystick that allows the user to switch between inputs.

You can find out the exact settings and locations of the buttons on your TV by referring to the device-specific user manual.



**Press the power button repeatedly.** When you press the power button once, the TV screen input menu will appear. If you want to scroll between different options, you need to press the power button multiple times. To select an input, long press on the power button.

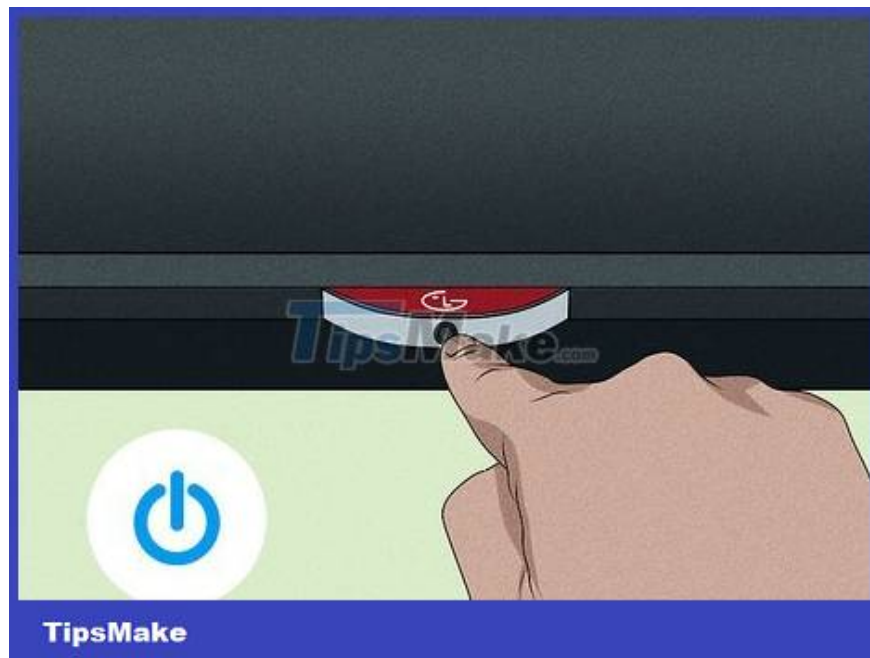
Note: do not press the power button for too long as the TV may turn off. The initial use is sometimes a bit difficult, but you will soon get used to it and estimate the exact time.

## **Change input with smartphone app**



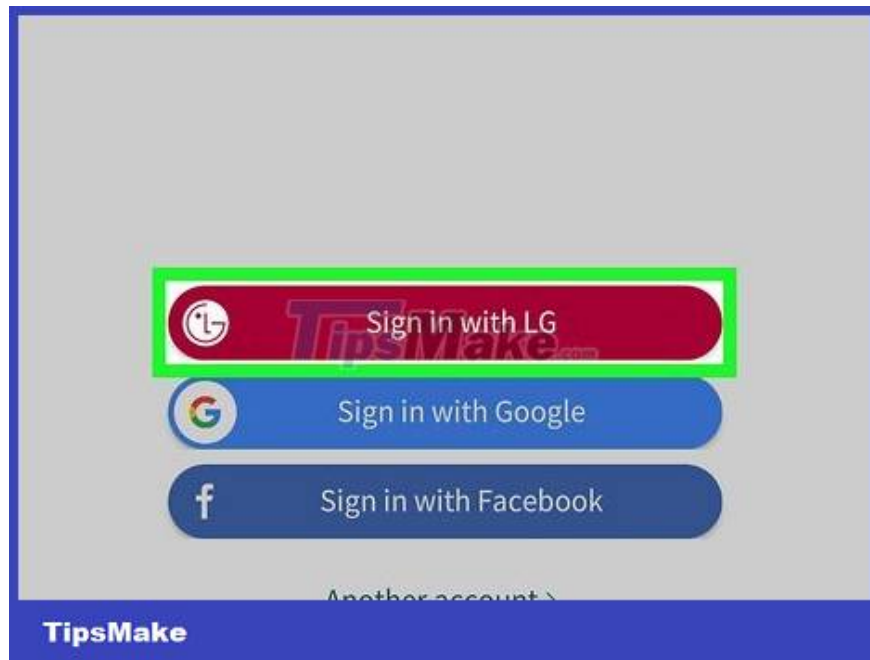
**Download the LG ThinQ app.** This app is available for free on the App Store for iPhone users and the Google Play Store for Android users. The app logo is a white house icon on a red background.

Note: this app can only be used with LG Smart TVs.



**Turn on the TV.** Use the power button located on the bottom edge/back of the TV to turn on the TV.

Another thing that you need to double check is that the TV and smartphone are connected to the same Wi-Fi network. If you use home Wi-Fi, chances are you configured your TV with that network the first time you set it up.



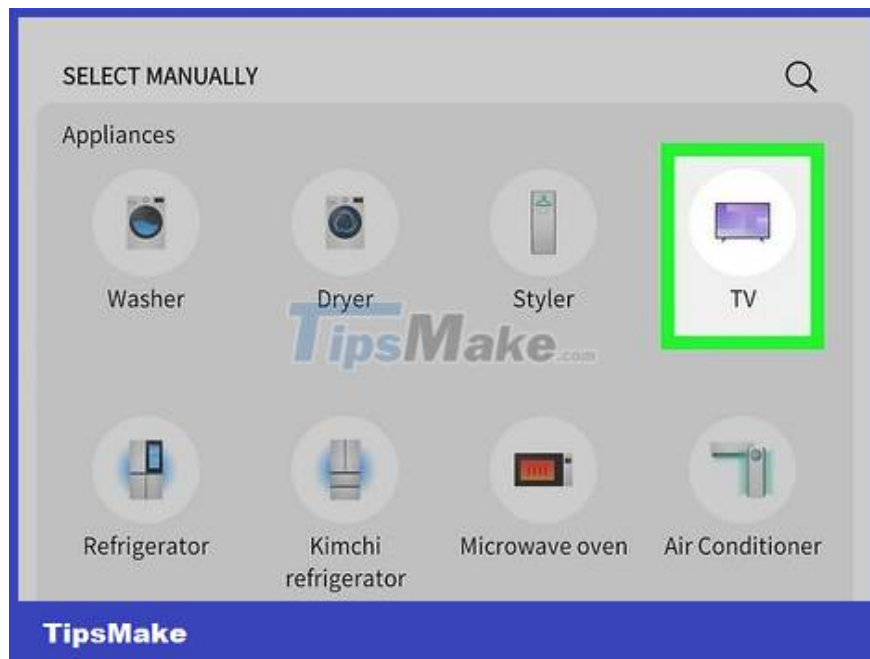
**Launch the ThinQ app and create an account.** You can create an LG account through Google, Facebook or your own email address. You can also sign in if you have used the app before.



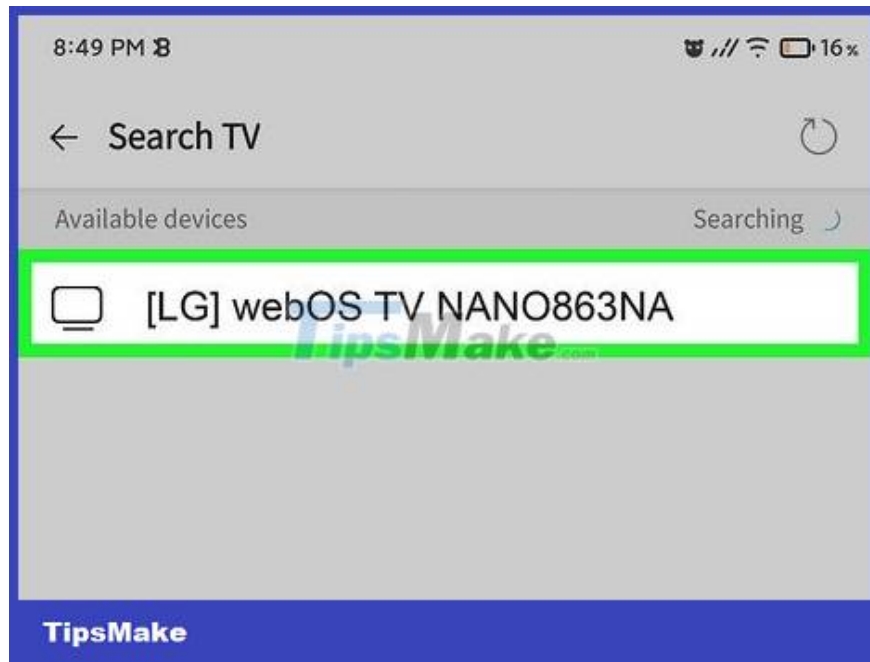
**Click the + Add a Device button .** This button is centered at the top of the app home page if you haven't added any devices yet.



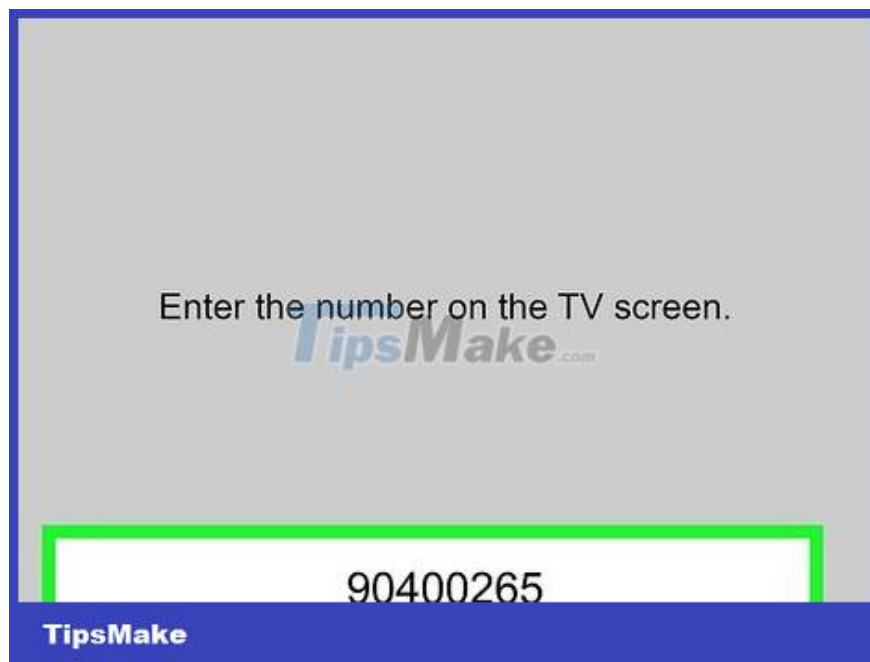
**Read the prompt that appears on the phone screen and then press 'OK'.** This information is mostly about how to use the app and compatible devices.



**Open the Home Apps section of the app, then select 'TV'.** The phone will start searching for nearby LG Smart TVs.



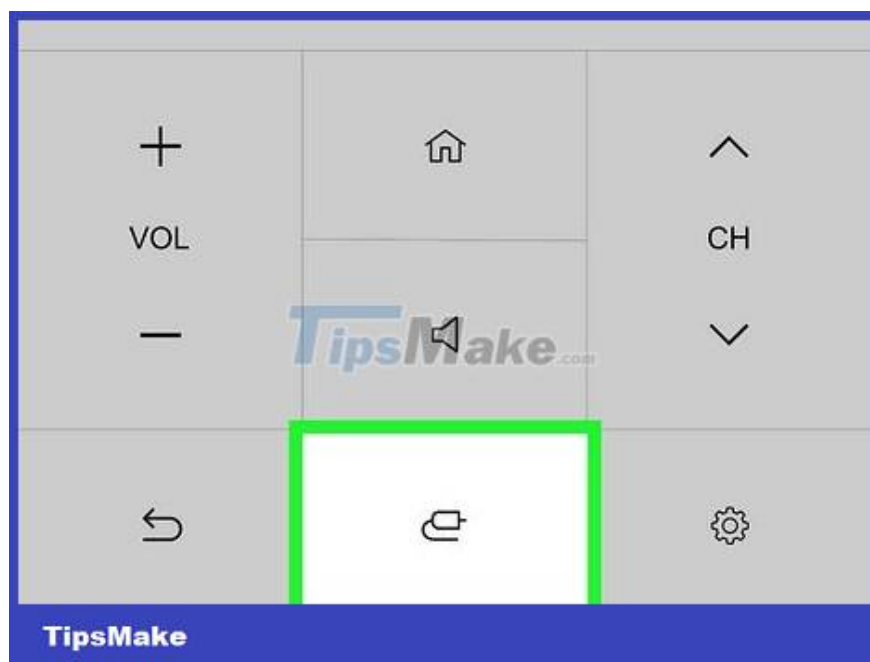
**Select TV.** The TV will appear in the list after a few seconds, so don't worry if you don't see it right away.



**Enter the verification code that appears on the TV screen.** An 8-character code will appear in a blue frame in the middle of the screen.



**Tap 'Move to Home'.** Now, once connected to the TV, the app acts as a remote control.



**Tap "Input" on the virtual remote.** Once the app starts working as your LG TV's remote, simply tap the "Input" button to scroll through the TV's input options.

You can also tap the house icon on the ThinQ app home page to access TV settings and change inputs.

### **Change input with computer mouse**



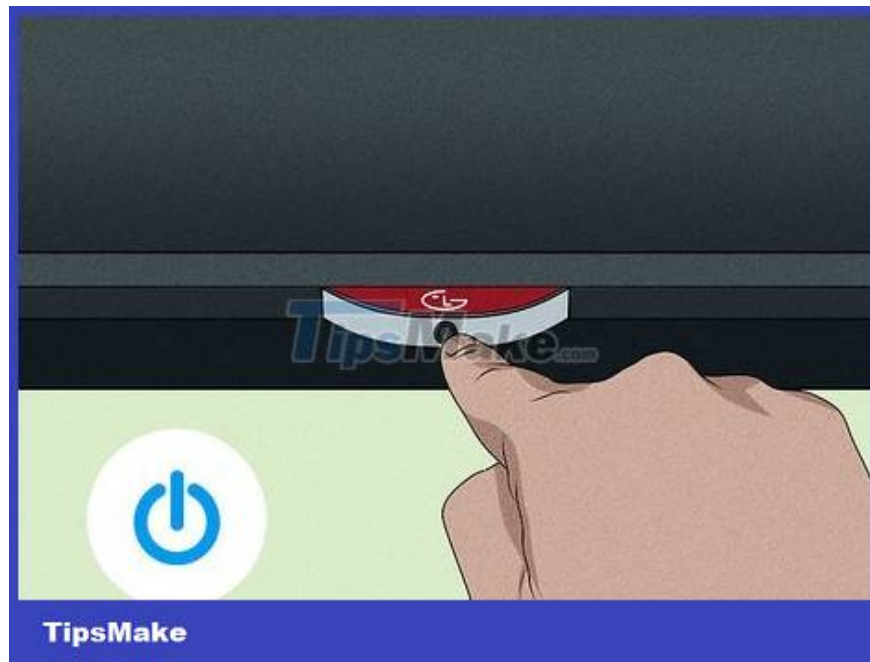
TipsMake

**Find a wireless mouse.** If you own a wireless mouse, you can use it to control your LG TV!



TipsMake

**Plug the mouse sensor head into the USB port on the TV.** The USB port is usually located along with the HDMI ports on the back of the TV.



**Turn on the TV.** Press the power button located on the top/back of the TV.



**Press the input button.** The TV display input menu will appear.



**Use mouse to select input.** Although the initial operation is often not mastered, you can use the mouse to select and click the desired input.

You can also use the mouse to switch channels, or connect the TV to Wi-Fi (for Smart TVs). Refer to your TV's user manual for more details!

You finished reading the article "**How to Change Input on LG TV Without Remote**" edited by the [TipsMake](#) team. We hope this article has provided you with many useful tech tips and tricks. You can search for similar articles on tips and guides. Thank you for reading and for following us regularly.