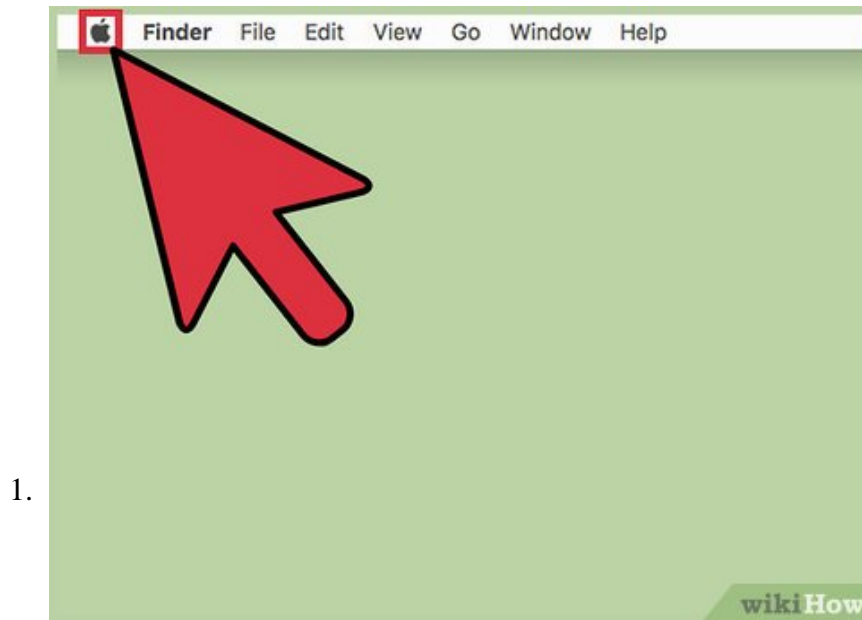


How to Change How Long Until a Mac Asks for Your Password

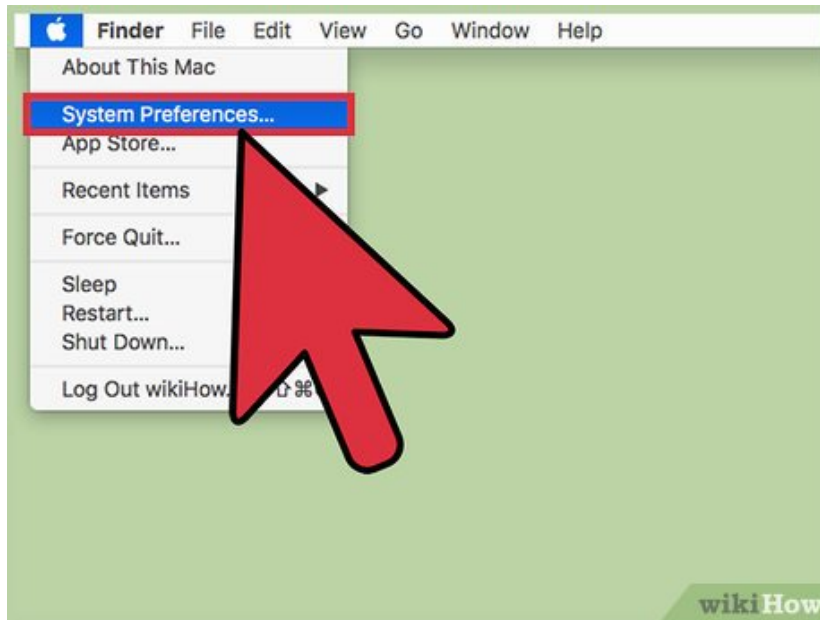
To change how long until your Mac asks for a password, click the Apple menu ? click System Preferences ? click Security & Privacy ? click the Require Password menu to select a new time. Click the Apple menu. This is in the upper-left corne...

Part 1 of 2:

Setting Your Password Time Limit



Click the Apple menu. This is in the upper-left corner of the screen.



2.

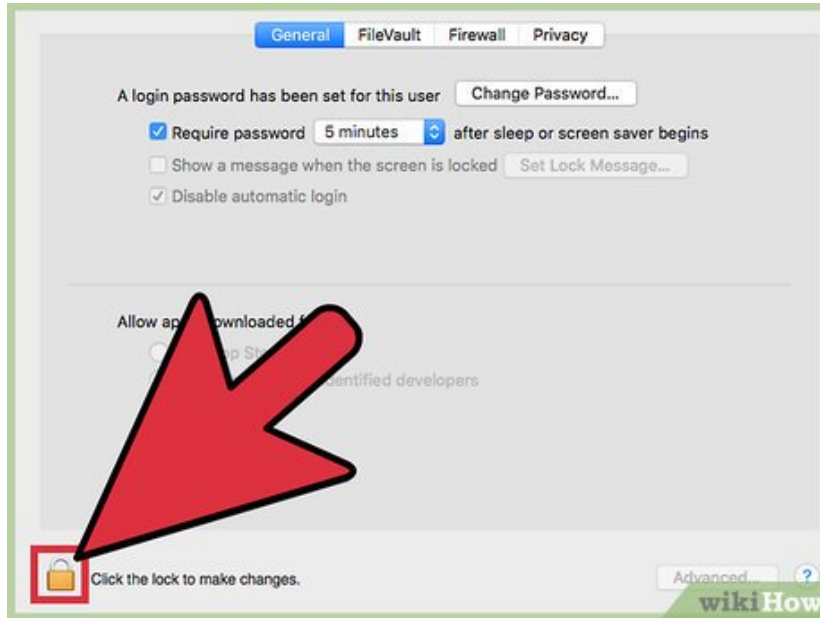
Click "System Preferences." If the main System Preferences menu does not appear, click "Show All" at the top of the window. This looks like a grid with 12 dots.



3.

Click "Security & Privacy." This is in the top row of options.

4.



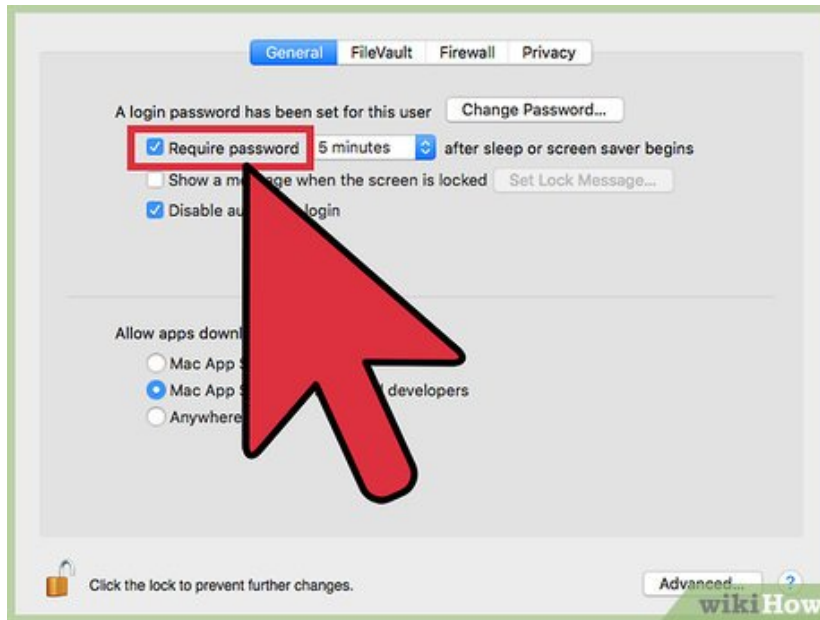
Click the padlock button in the lower-left corner.

5.



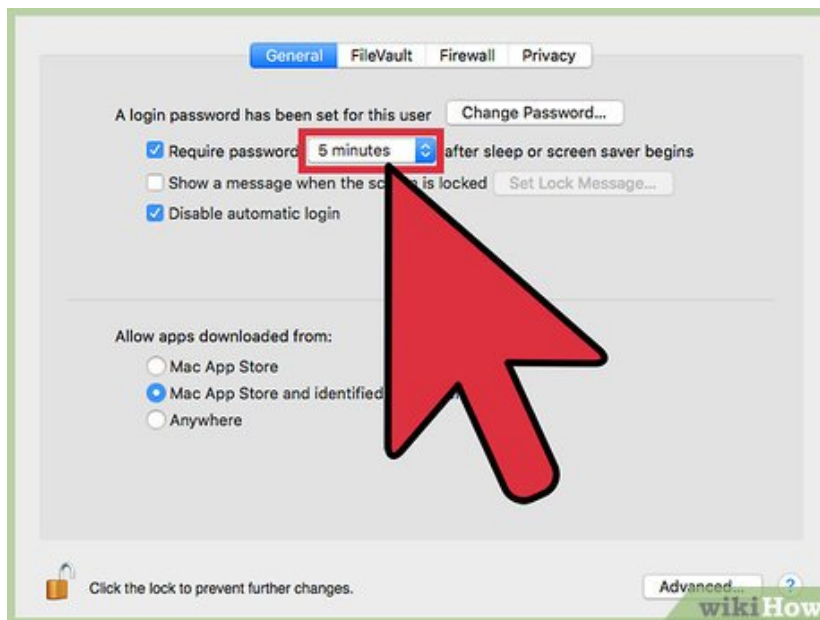
Type your user password.

6.



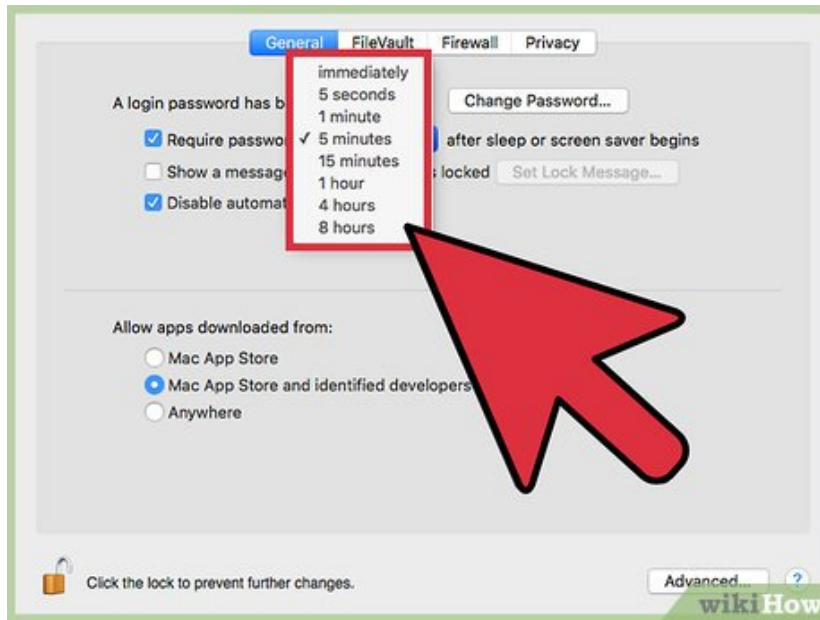
Check the box next to "Require password." When this is enabled, you can set the time until your password is required after your computer goes to sleep or turns on the screen saver. If you don't want to be prompted for your password ever when your computer goes to sleep or into screen saver, uncheck this box.

7.



Click the drop-down menu after "Require password."

8.

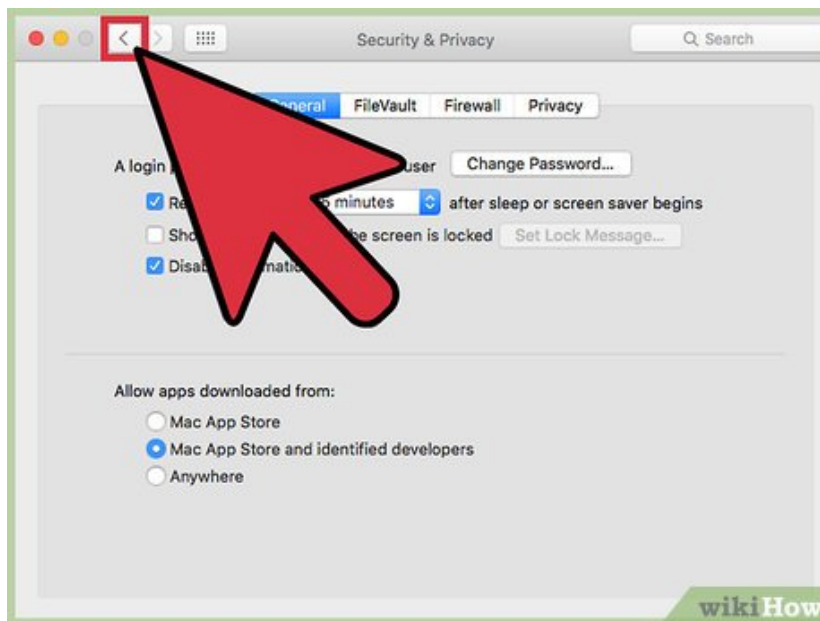


Click the amount of time you want to use. Your computer will wait this amount of time after sleeping or enabling the screen saver until it asks for your password again.

Part 2 of 2:

Adjusting Your Screen Saver and Sleep Times

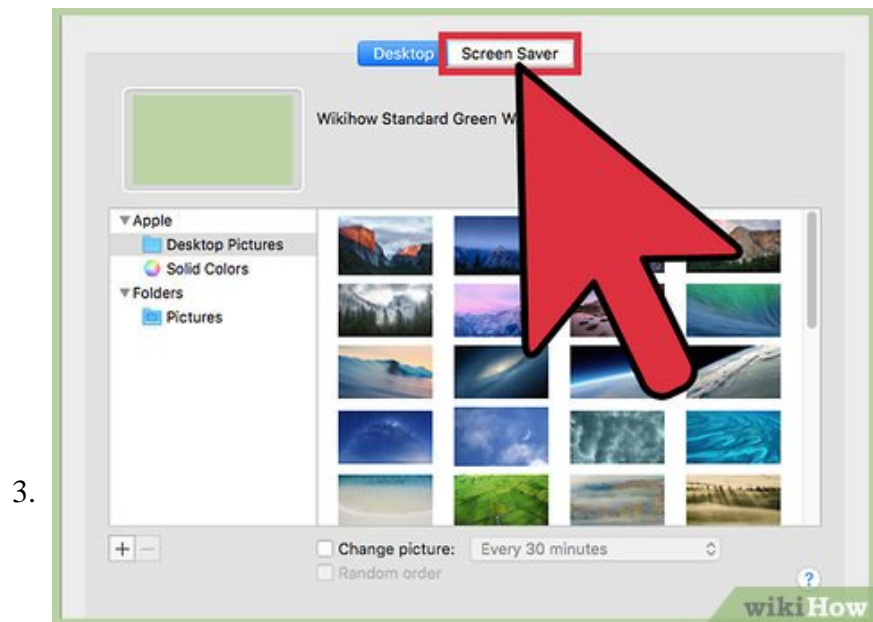
1.



Click the "Show All" button at the top of the window. This will return you to the System Preferences menu so that you can change the time until your computer goes to sleep or enables the screen saver.

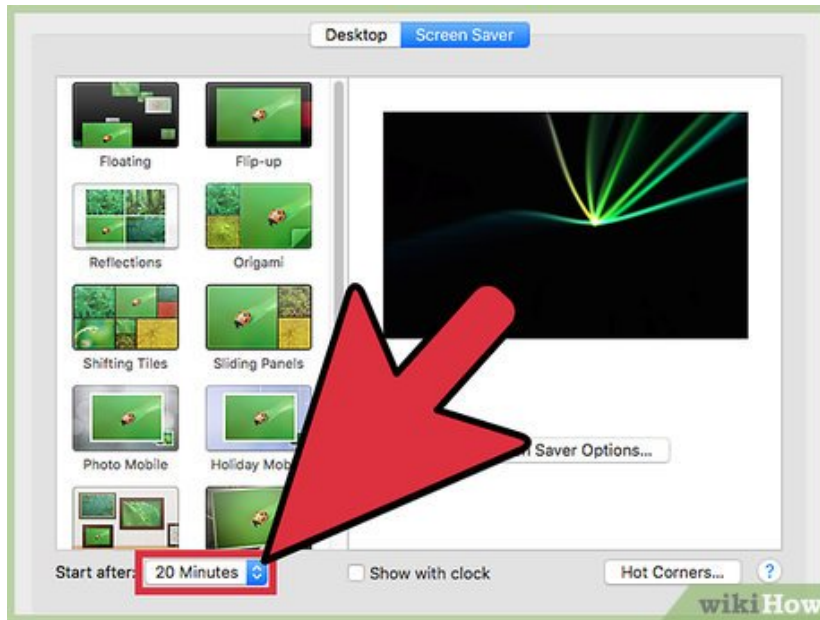


Click the "Desktop & Screen Saver" option.



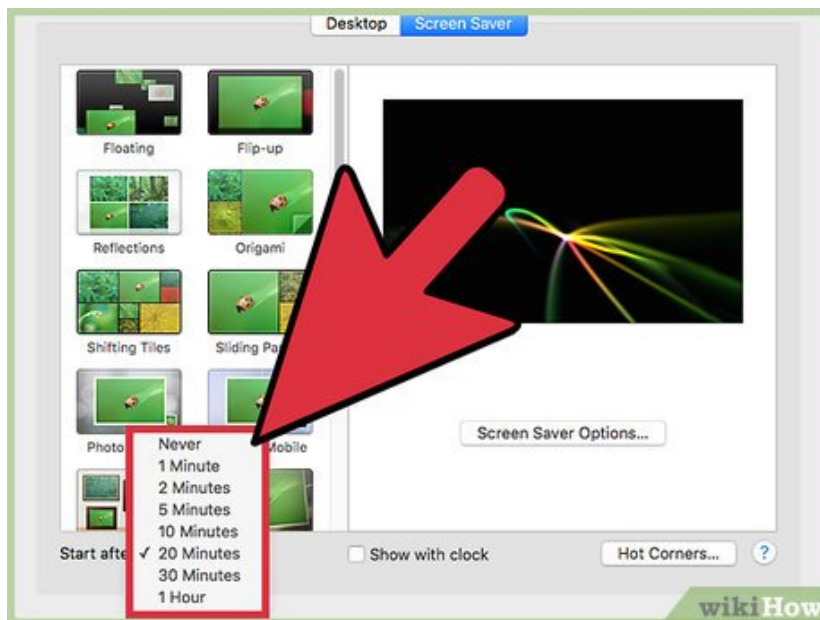
Click the "Screen Saver" tab.

4.

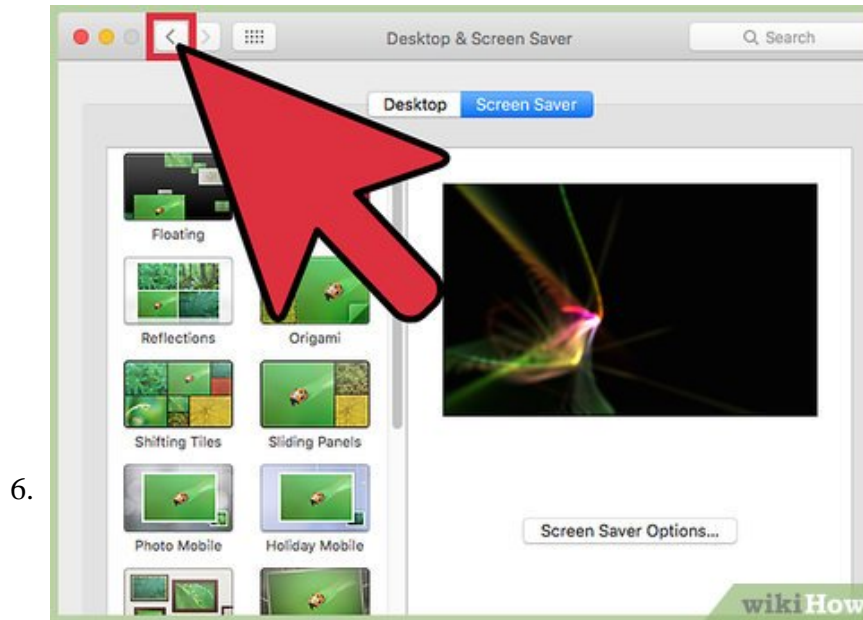


Click the "Start after" menu.

5.



Click the time that your screen saver should start. If you don't want a screen saver, select "Never." Your computer will prompt you for a password once the allotted time has passed after the screen saver activates.

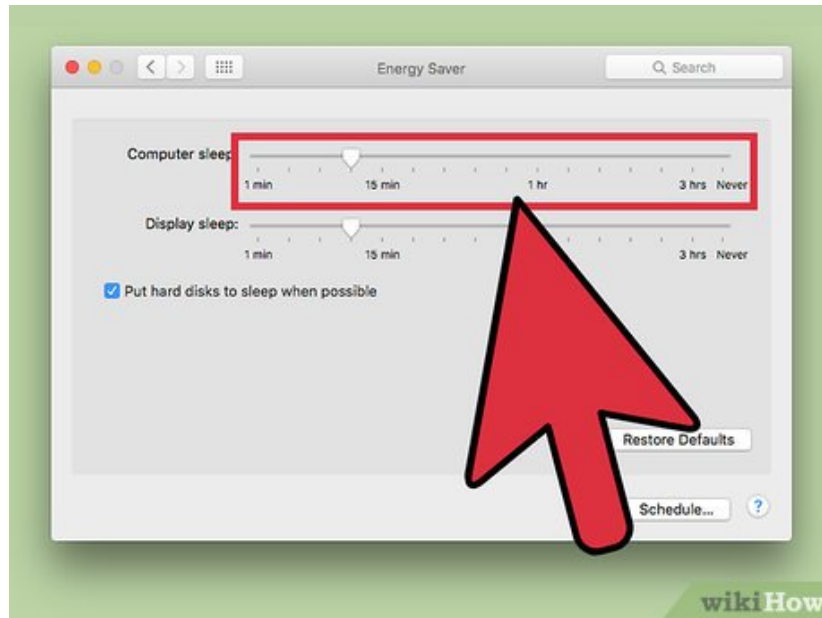


Click the "Show All" button. You'll now be changing the time until your computer puts itself to sleep.



Click the "Energy Saver" option.

8.



Click and drag the "Computer sleep" slider. Your computer will put itself to sleep after this amount of inactivity. You'll then be prompted for your password however long after that, depending on what you set earlier in the Security & Privacy menu.

You finished reading the article "**How to Change How Long Until a Mac Asks for Your Password**" edited by the [TipsMake](#) team. We hope this article has provided you with many useful tech tips and tricks. You can search for similar articles on tips and guides. Thank you for reading and for following us regularly.