

How to change Gmail wallpaper to your liking - Change default wallpaper

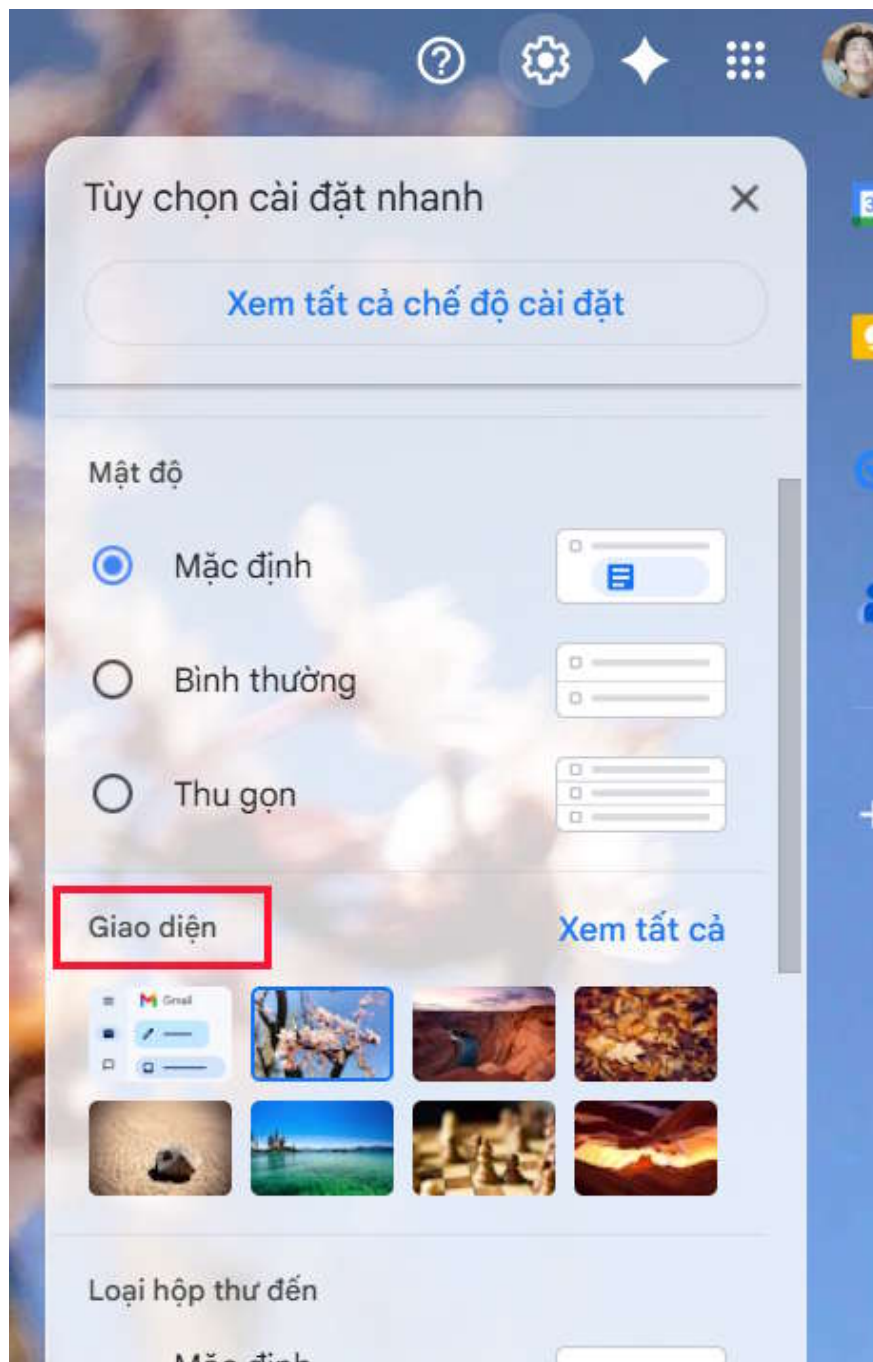
Customizing your Gmail background is a quick and easy way to freshen up your inbox, whether you want a soothing photo, your favorite color, or a simple dark mode.

Customizing your Gmail background is a quick and easy way to freshen up your inbox, whether you want a soothing photo, your favorite color, or a simple dark mode. Whether you want to choose from Google's pre-made themes, upload a custom image, or switch to dark mode, it's easy to do. Here's how to change your Gmail background.

Instructions for changing Gmail background image

Step 1:

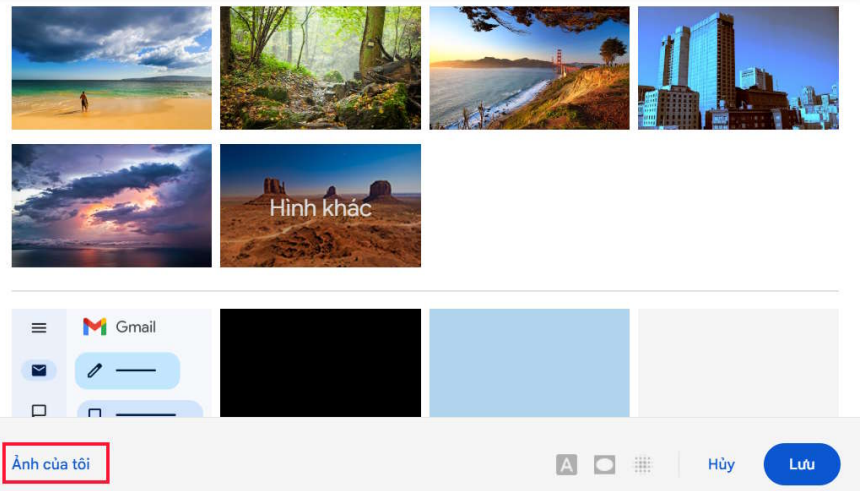
At the Gmail interface, click on **the gear icon** , then scroll down to **the Interface section** and click **See all** .



Step 2:

Switch to the new interface, you will see **all the wallpapers** for you to choose. If you like any wallpaper, click to select it and then click Save below. Or you can **click My Photos** to upload a personal photo.

Chọn chủ đề của bạn



Step 3:

Switch to the new interface, click on **Photos** to open photos in Google Photos.

Chọn hình nền của bạn

Nổi bật

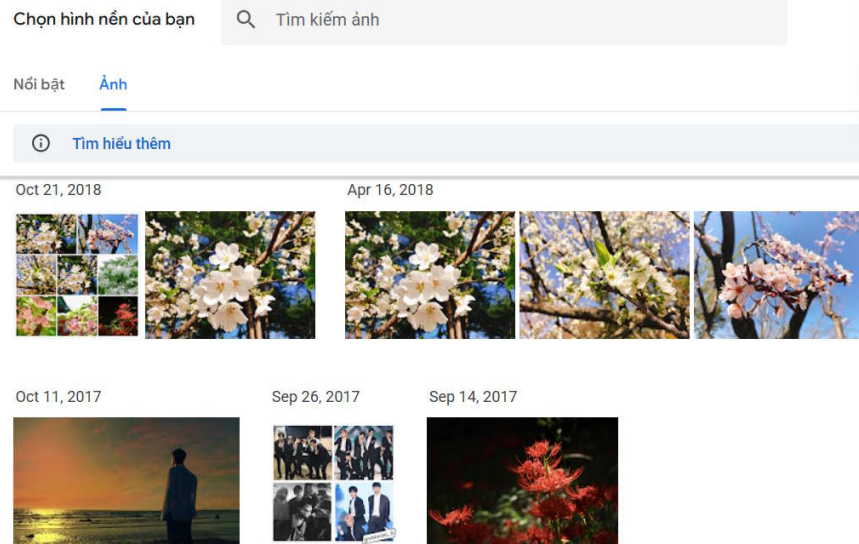
Ảnh



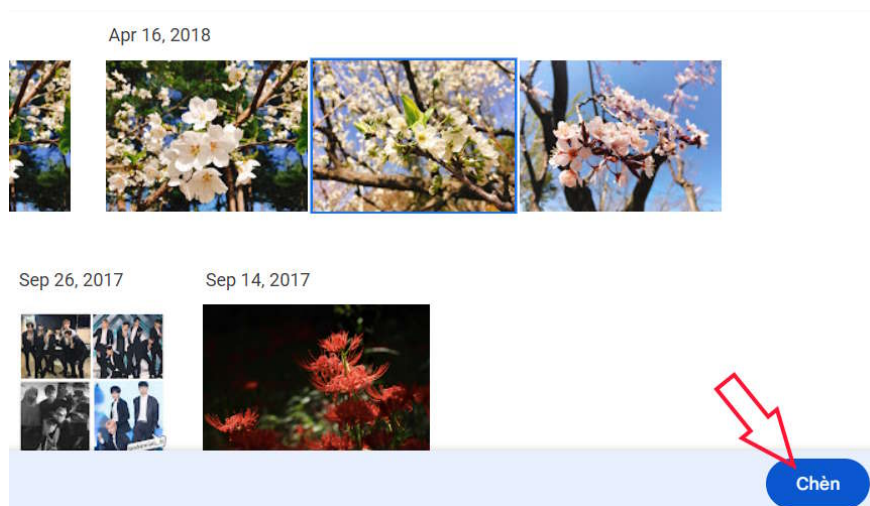
Thêm hiệu ứng



Here you select a photo in Google Photos to set as the Gmail interface.



Scroll down below the user **press Insert** to complete the background image for Gmail.



Finally, **click Save** to save the new interface for Gmail.

Chọn chủ đề của bạn



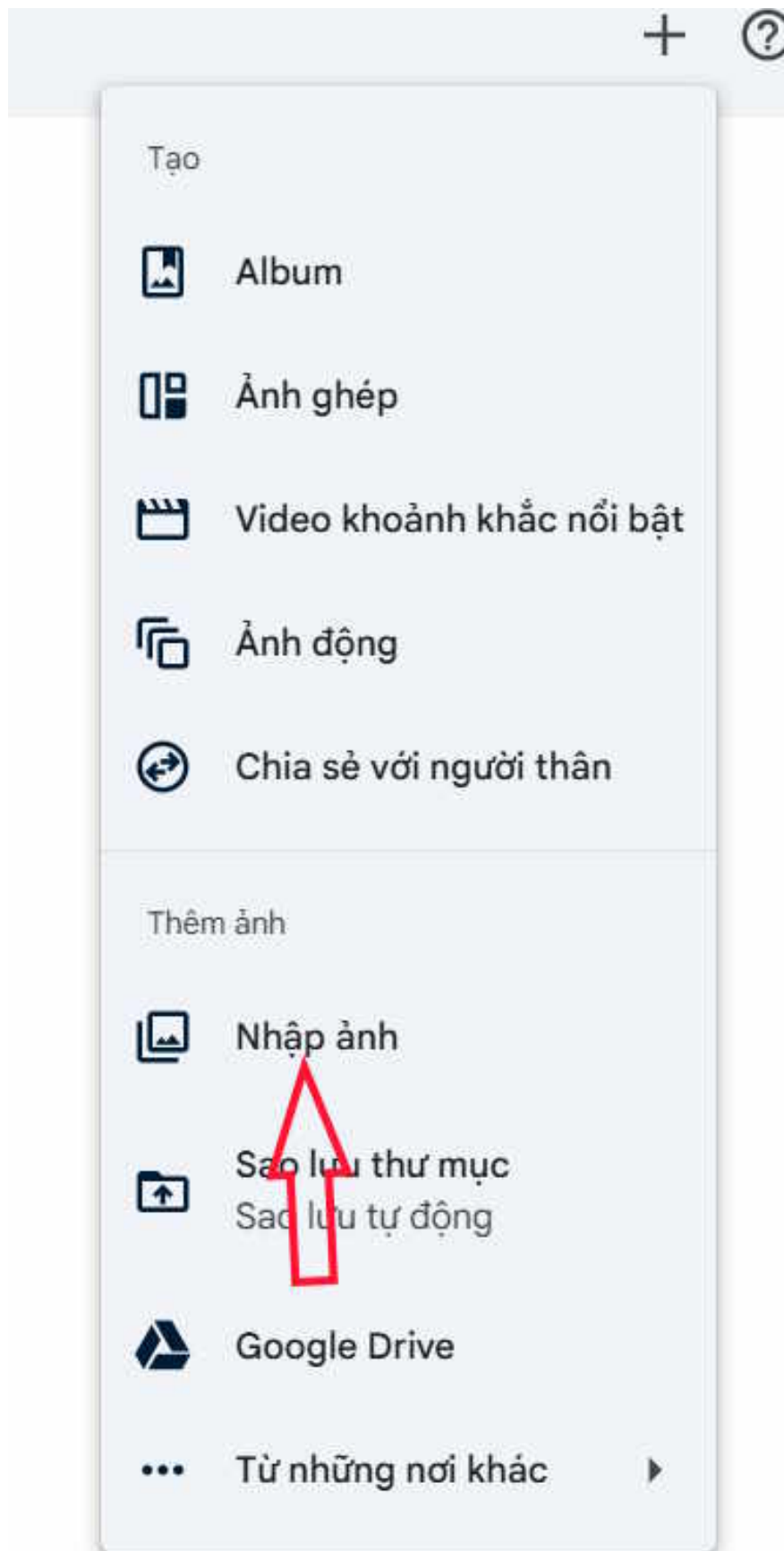
Ảnh của tôi



Hủy

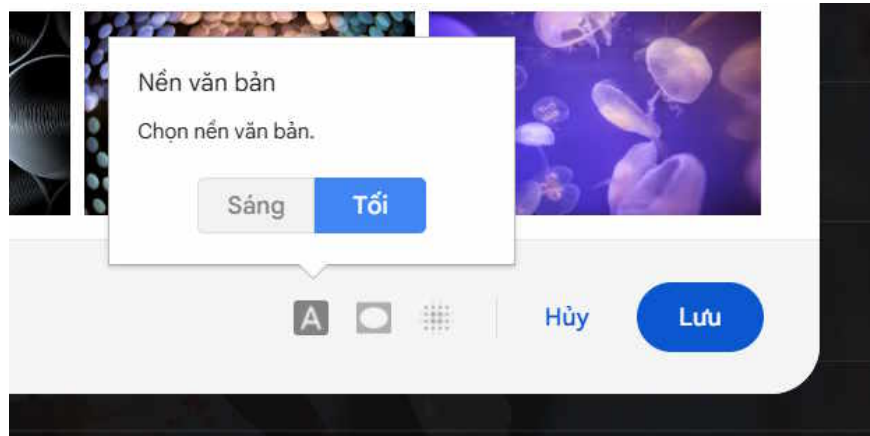
Lưu

In case you don't like any photo, you need to upload the photo you want to Google Photos and then reselect the photo as before.

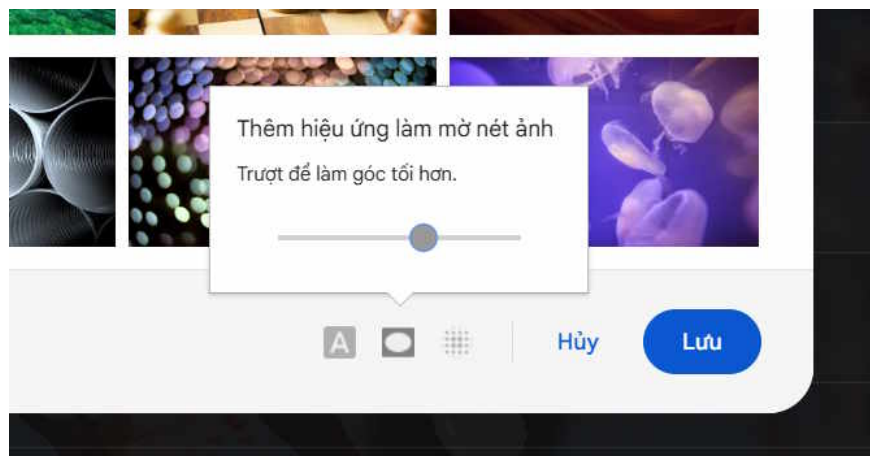


Step 4:

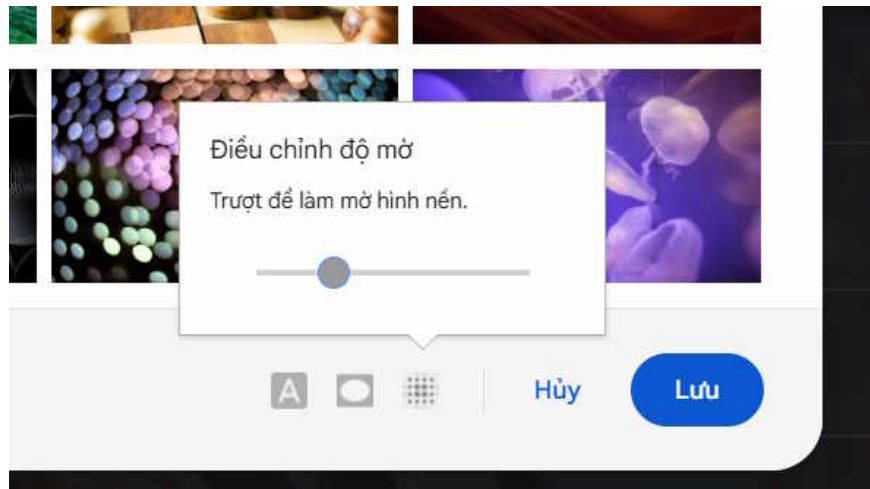
After you have selected the background image for Gmail, you can continue to adjust **the text background interface** to light or dark.



Continue setting up the blur effect for the Gmail background image.

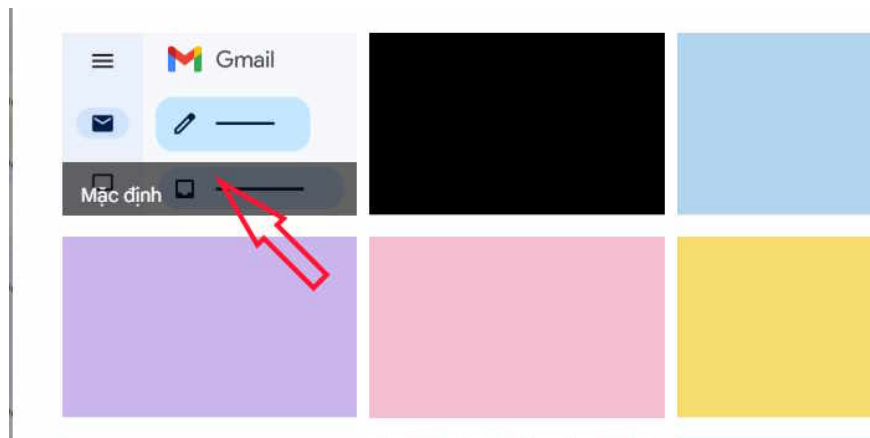


Finally, you can add a blur effect to Gmail background images when the background image has too many colors that affect the content viewing.



Step 5:

In case you want **to return to the default Gmail interface** , just click on the default interface as shown.



You finished reading the article "**How to change Gmail wallpaper to your liking - Change default wallpaper**" edited by the [TipsMake](#) team. We hope this article has provided you with many useful tech tips and tricks. You can search for similar articles on tips and guides. Thank you for reading and for following us regularly.