

How to change FPT WiFi password

Changing FPT WiFi password or changing WiFi WiFi will help block unwanted access. If you do not know how to change FPT WiFi password, please refer to this tutorial.

With most modem devices after installation is complete, including FPT Gpon modem of FPT will be provided with any password to use. And in the process of using WiFi, it is essential to regularly change **WiFi passwords** to prevent unauthorized access, or to increase the speed of a more stable connection to WiFi. In the following article, we will guide you **how to change FPT WiFi WiFi Modem Gpon**.

1. How to change the TP-Link wifi password?
2. How to change wifi password Tenda?
3. 2 steps to change Linksys wifi password

Instructions to change pass FPT WiFi Modem Gpon

Step 1:

First, we connect the modem to the computer with a network cable. You open the browser on your computer and then log in to **http://192.168.1.1** .

At the main interface, we **enter the Usernam by default as admin and Password is also admin** and then **click Login** .

Note , this is the password as well as the default username of FPT WiFi WiFi modem. In case you have changed your password, contact the center to restore the default password.



Step 2:

Next we access **the Network section** and **select WiFi** in the list menu on the left of the interface. Looking to the right, we can change the WiFi network name and WiFi password as follows:

1. SSID Name: change the name of the new WiFi. Depending on the needs of the user, you can change the name or keep it as it was.
2. WPA key: password for WiFi. We will change the new password for WiFi.

Finally **click Save** below to save the new password for FPT WiFi Modem Gpon.

The screenshot displays the configuration interface for a GPON Home Gateway. The left sidebar contains a menu with options: Status, Network (highlighted with a red '1'), LAN, WAN, WiFi (highlighted with a red '2'), Routing, DNS, DSCP Remark, DNS_Suffix, Qos, Security, Application, and Maintain. The main content area is titled 'Network > WiFi'. It features several configuration fields: 'SSID Name' (highlighted with a red box and labeled '3'), 'Enable SSID' (dropdown menu set to 'Enable'), 'SSID Broadcast' (dropdown menu set to 'Enable'), 'SSID Isolate' (dropdown menu set to 'Disable'), 'Enable WPS' (dropdown menu set to 'Enable'), 'WPS Mode' (dropdown menu set to 'PBC'), and 'PIN Code Number' (text input field). Below these fields is a 'WPS Connect' button. Further down are 'Encrypt Mode' (dropdown menu set to 'WPA/WPA2 Personal'), 'WPA Version' (dropdown menu set to 'WPA1/WPA2'), and 'WPA Encryption Mode' (dropdown menu set to 'TKIP/AES'). The 'WPA Key' field is circled in red and labeled with a red '4'. At the bottom, there are 'Save' and 'Refresh' buttons, with the 'Save' button circled in red and labeled with a red '5' and an arrow pointing to it.

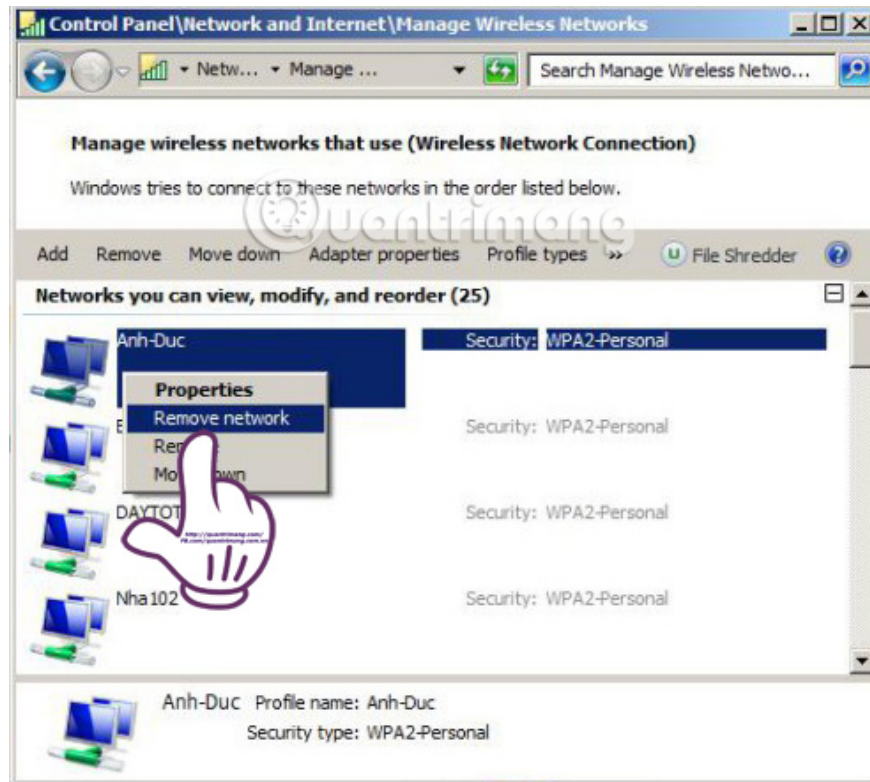
Step 3:

Now proceed to connect to WiFi after you have changed your password. If you still keep the old WiFi name and use a new password, we will receive a notification that you cannot connect to that WiFi. Very simply, we only need to delete the history of connecting to the previous WiFi network to establish a reconnection on the computer.

On Windows 7 operating system:

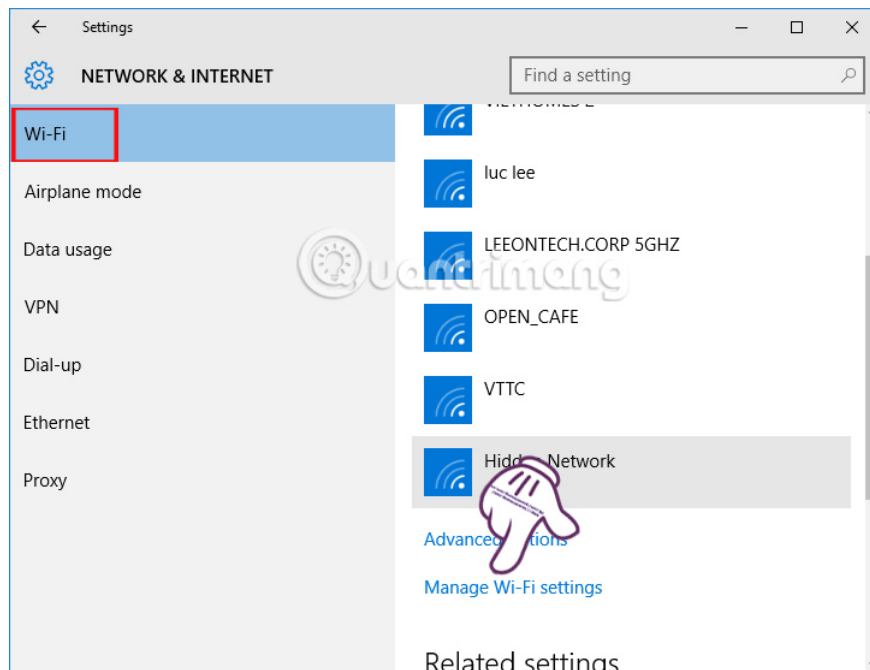
At the computer screen, click on **Network > Network and sharing center > Manager Wireless networks** .

Then, **right-** click on that **WiFi name** and select **Remove Network** to delete from the list of accessed WiFi.



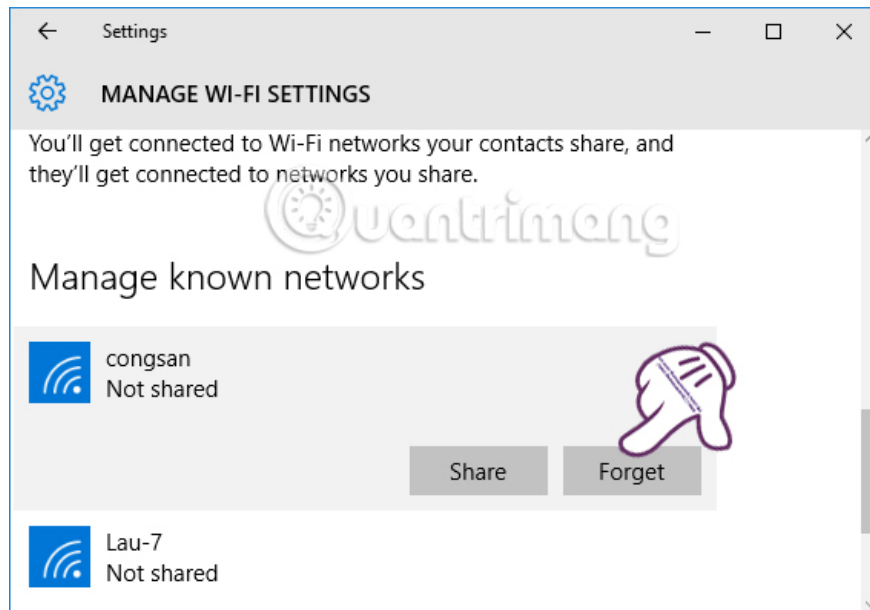
On Windows 10 operating system:

First of all, you access the folder under the **Settings> Network & Internet> WiFi> Manage Wi-Fi Settings** .



Next, scroll down to the bottom and **left click on the WiFi name you want to delete and select Forget** . After that you just need to reconnect to the new WiFi that has changed the password.

Readers can refer to the article [How to delete Wifi saved on Windows 10 ?](#)



So you have completed the operation of changing passwords for WiFi Gpon modem of FPT. In case users use personal WiFi network, we should proceed to change both WiFi name in SSID name and password to be able to connect to WiFi more quickly, without taking steps to delete old WiFi connection in computer.

Refer to the following articles:

1. Instructions for installing Wifi Router Tenda W311R
1. Fix IP address conflict error on Windows computer
1. Instructions for fixing Wifi errors with yellow exclamation

I wish you all success!

You finished reading the article "**How to change FPT WiFi password**" edited by the [TipsMake](#) team. We hope this article has provided you with many useful tech tips and tricks. You can search for similar articles on tips and guides. Thank you for reading and for following us regularly.