

How to Change Default Folder in Windows Terminal

By default, Windows Terminal will use your current user directory as the default directory when you open it. However, you can completely change this folder to any other folder on your Windows PC.

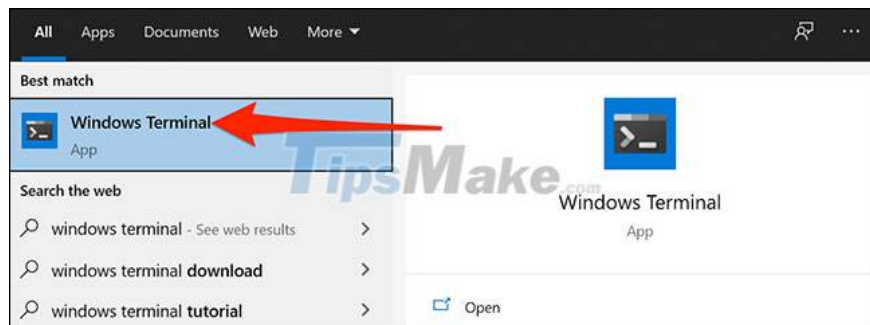
In this article, we will learn how to change the default working directory for PowerShell, Command Prompt and Ubuntu shell.

Change PowerShell's Default Directory in Windows Terminal

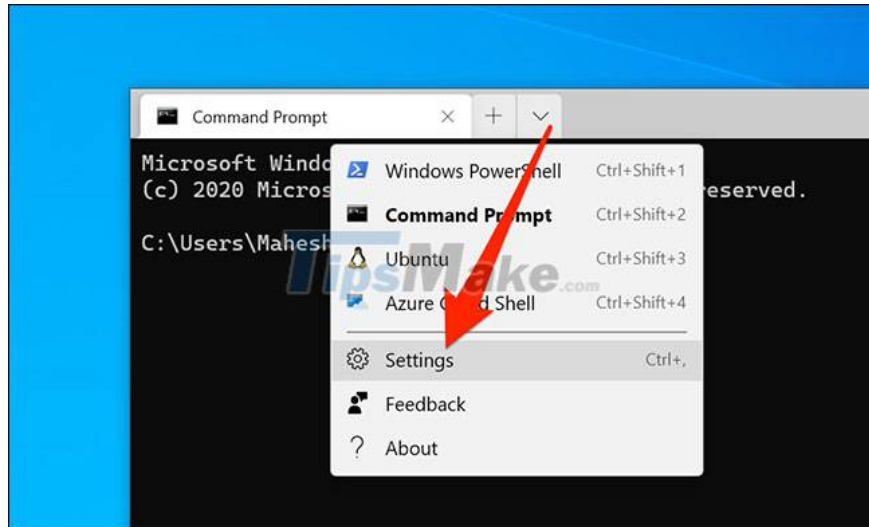
PowerShell is the default shell that opens when you launch Windows Terminal. Like other shells, PowerShell uses your current user directory as the default directory.

You can change this default directory just by adding a line of code in the Windows Terminal's settings file.

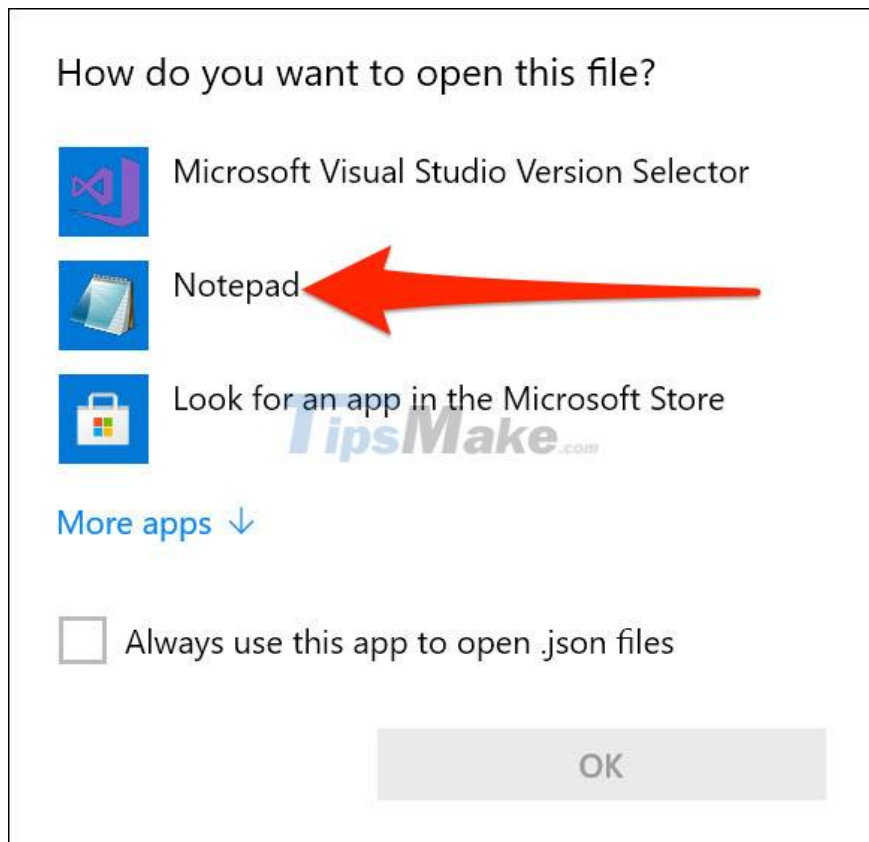
To get started, open the 'Start' menu, search for 'Windows Terminal' and click on the corresponding application in the results.



Next, click the down arrow icon at the top of the Windows Terminal window, then select 'Settings'.



Windows will ask you which application you want to open the installation file to. You can choose any code (or plain text) editor from the list, but we recommend using Notepad for simplicity. Please click 'Notepad' in the list and press 'OK'.



Once the settings file opens in Notepad, scroll to the 'Make changes here to the powershell.exe profile' section.

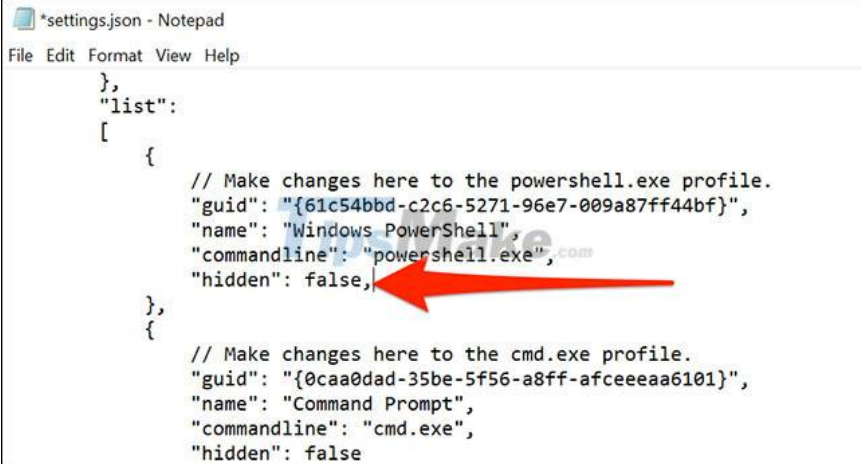
Place your cursor at the end of the last value in this section and enter a ',' (comma).

For example, if the final value in that section is:

```
"Hidden": false
```

Now it should look like this (notice the comma at the end.):

```
"Hidden": false,
```



```
*settings.json - Notepad
File Edit Format View Help
},
"list":
[
  {
    // Make changes here to the powershell.exe profile.
    "guid": "{61c54bbd-c2c6-5271-96e7-009a87ff44bf}",
    "name": "Windows PowerShell",
    "commandline": "powershell.exe",
    "hidden": false,
  },
  {
    // Make changes here to the cmd.exe profile.
    "guid": "{0caa0dad-35be-5f56-a8ff-afceeeaa6101}",
    "name": "Command Prompt",
    "commandline": "cmd.exe",
    "hidden": false
  }
]
```

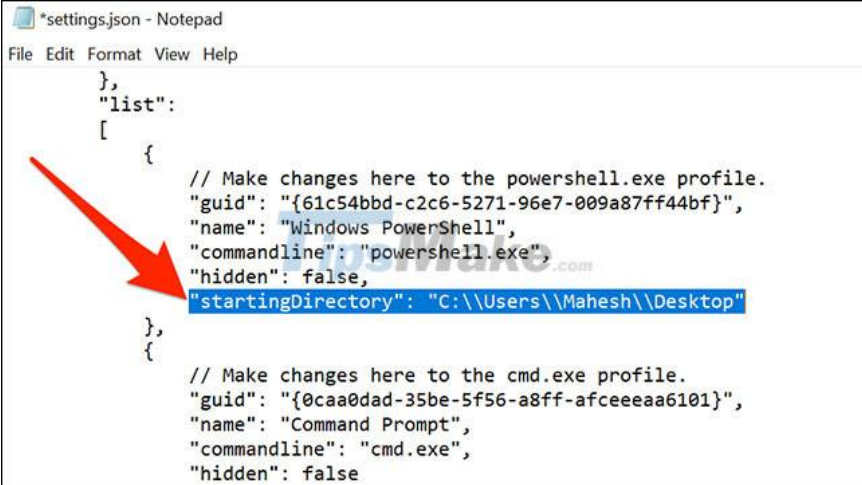
Next, you press Enter to add a new line. Enter the following code in this line, replacing PATH with the path to your new default directory.

Make sure that your directory path has quotes. Also, when you have a slash in the path, set it to double slash.

```
"startingDirectory": "PATH"
```

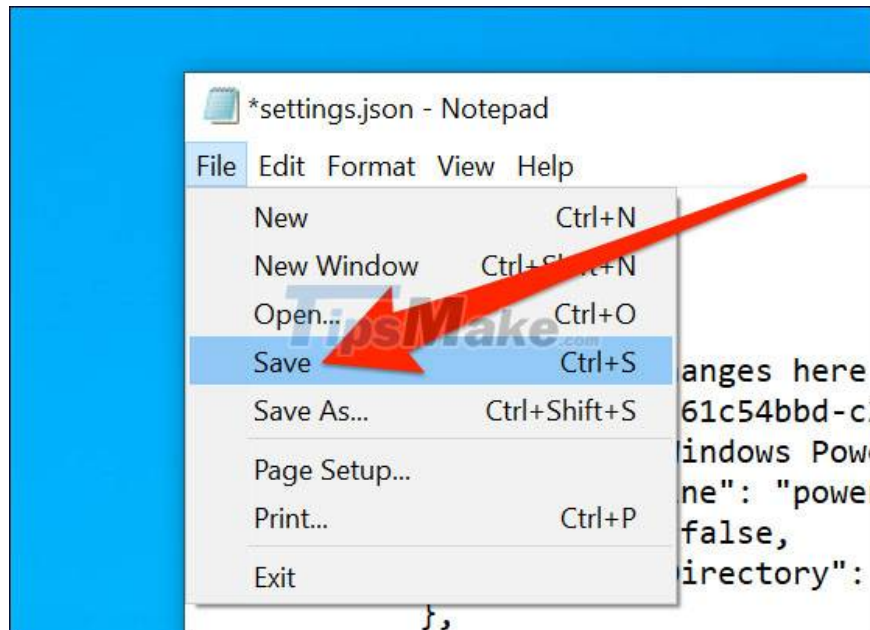
For example, to set the desktop as the default folder, you must enter the following line of code in the settings file (replace "Username" with your username):

```
"startingDirectory": "C:\Users\Username\Desktop"
```



```
*settings.json - Notepad
File Edit Format View Help
},
"list":
[
  {
    // Make changes here to the powershell.exe profile.
    "guid": "{61c54bbd-c2c6-5271-96e7-009a87ff44bf}",
    "name": "Windows PowerShell",
    "commandline": "powershell.exe",
    "hidden": false,
    "startingDirectory": "C:\\Users\\Mahesh\\Desktop"
  },
  {
    // Make changes here to the cmd.exe profile.
    "guid": "{0caa0dad-35be-5f56-a8ff-afceeeaa6101}",
    "name": "Command Prompt",
    "commandline": "cmd.exe",
    "hidden": false
  }
]
```

After entering the path, click File > Save in Notepad to save the changes.



From now on, when you open a new PowerShell tab in Windows Terminal, it will use the folder you just specified as the new default folder.

Change Command Prompt's Default Directory in Windows Terminal

You can also change the Command Prompt's default directory using the same steps as listed above. The only difference is that you need to add the new folder path in the Command Prompt section of the installation file.

First, open the Windows Terminal settings as above.

Scroll down to the 'Make changes here to cmd.exe profile' section.

Place your cursor after the last value in this section and enter a ',' (comma).

Press Enter to add a new line and enter the following code. Please replace the PATH value with the path to your new directory.

```
"startingDirectory": "PATH"
```

```
{
  // Make changes here to the powershell.exe profile.
  "guid": "{61c54bbd-c2c6-5271-96e7-009a87ff44bf}",
  "name": "Windows PowerShell",
  "commandline": "powershell.exe",
  "hidden": false,
  "startingDirectory": "C:\\Users\\Mahesh\\Desktop"
},
{
  // Make changes here to the cmd.exe profile.
  "guid": "{0caa0dad-35be-5f56-a8ff-afceeeaa6101}",
  "name": "Command Prompt",
  "commandline": "cmd.exe",
  "hidden": false,
  "startingDirectory": "C:\\Users\\Mahesh\\Desktop"
},
{
  "guid": "{2c4de342-38b7-51cf-b940-2309a097f518}",
  "hidden": false,
```

Click File > Save in Notepad to save your changes.

Change Ubuntu's Default Directory in Windows Terminal

You can use the same line of code above to change Ubuntu's (Linux) default directory in Windows Terminal.

First, open Windows Terminal's settings file as you normally would.

Scroll to the section that says "Name : Ubuntu."

Place your cursor after the last value in this section and add a ',' (comma).

Press Enter to add a new line and enter the following code, of course you will still have to replace the PATH value with the path to your new directory.

```
"startingDirectory": "PATH"
```

```
{
  "guid": "{2c4de342-38b7-51cf-b940-2309a097f518}",
  "hidden": false,
  "name": "Ubuntu",
  "source": "Windows.Terminal.Wsl",
  "startingDirectory": "C:\\Users\\Mahesh\\Desktop"
},
{
  "guid": "{b453ae62-4e3d-5e58-b989-0a998ec441b8}",
  "hidden": false,
  "name": "Azure Cloud Shell",
  "source": "Windows.Terminal.Azure"
}
]
```

In Notepad, click File > Save to save the changes.

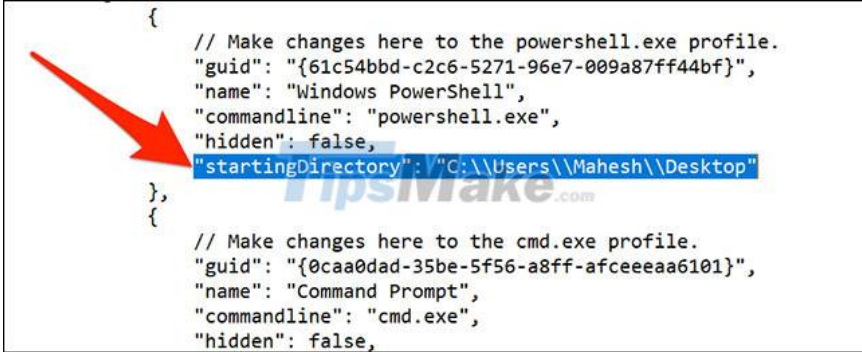
How to reset the default folder in Windows Terminal

To revert back to the original default directory in Windows Terminal, simply remove your newly added code from the settings file.

Start by opening Windows Terminal and then launch the installation file.

Navigate to the shell where you want to reset the default directory.

Use your mouse to highlight the entire line of code you added earlier, then press Backspace to delete it.



```
{
  // Make changes here to the powershell.exe profile.
  "guid": "{61c54bbd-c2c6-5271-96e7-009a87ff44bf}",
  "name": "Windows PowerShell",
  "commandline": "powershell.exe",
  "hidden": false,
  "startingDirectory": "C:\\Users\\Mahesh\\Desktop"
},
{
  // Make changes here to the cmd.exe profile.
  "guid": "{0caa0dad-35be-5f56-a8ff-afceeeaa6101}",
  "name": "Command Prompt",
  "commandline": "cmd.exe",
  "hidden": false,
```

Also, remember to remove the ',' (comma) that you added at the end of the last value in that section.

Finally, click File > Save in Notepad to save the changes.

You finished reading the article "**How to Change Default Folder in Windows Terminal**" edited by the [TipsMake](#) team. We hope this article has provided you with many useful tech tips and tricks. You can search for similar articles on tips and guides. Thank you for reading and for following us regularly.