

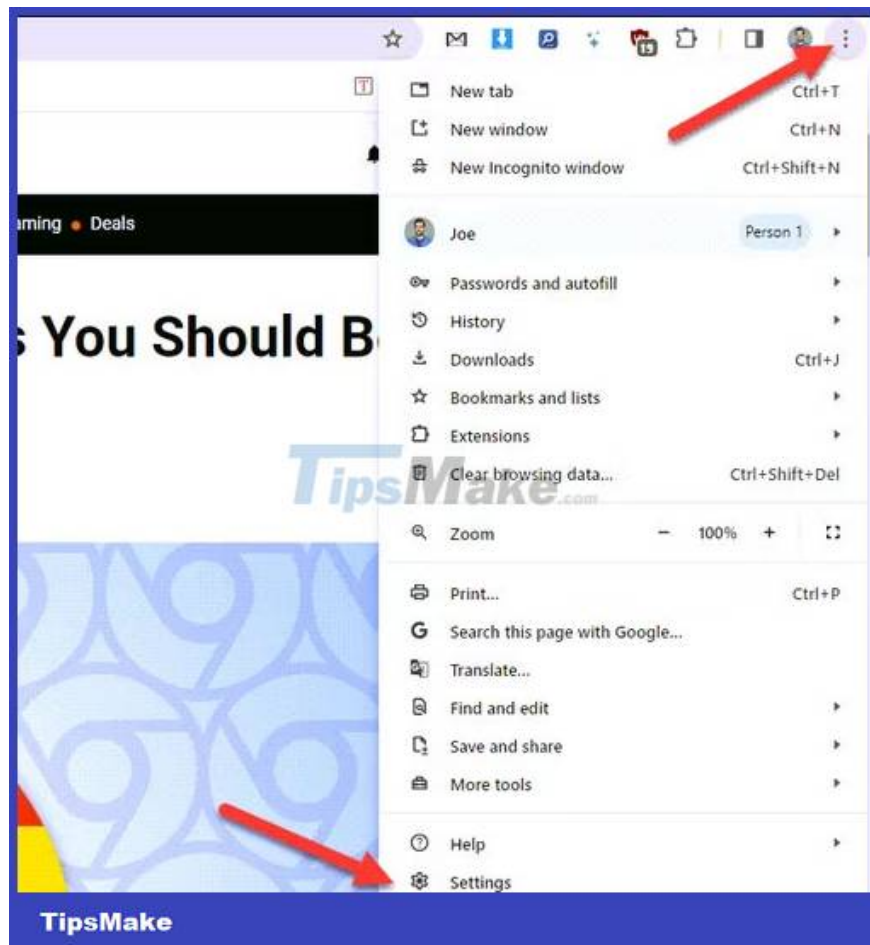
How to change Chrome's default zoom settings

While surfing the web, sometimes you need to minimize or enlarge the content displayed on the screen.

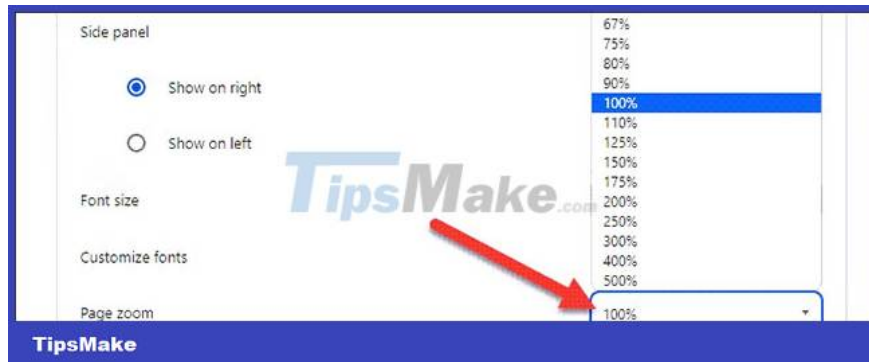
While surfing the web, sometimes you need to minimize or enlarge the content displayed on the screen. Chrome's standard zoom settings are easy to change, allowing you to quickly set your browser to zoom in or out on different web pages accordingly. Additionally, you can also set a default font size to help create a more enjoyable browsing experience. Let's find out right below.

Set default zoom level for all web pages in Chrome

To get started, first click the three vertical dots in the top right corner of your Chrome browser interface. In the drop-down menu, click 'Settings'.



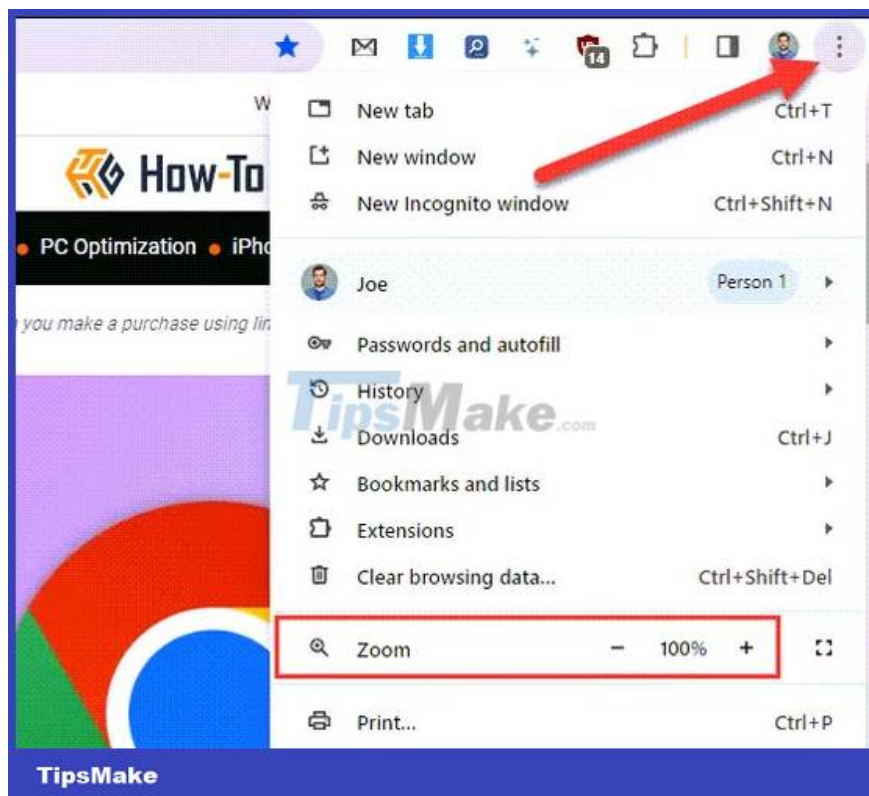
On the settings menu, click "Appearance." Open the 'Page Zoom' drop-down menu and choose the zoom setting that's best for you. You can also adjust Chrome's default font size in the drop-down menu just above.



Changes you apply here will be rolled out across all websites you visit in Chrome, unless you've set a specific zoom level for that site using the steps below.

Set the default zoom level for a website in Chrome

Continue clicking on the three vertical dots in the top right corner of the Chrome browser interface. In the drop-down menu that appears, click the Minus (-) or Plus (+) icon to zoom in or out respectively.



You can also use a keyboard shortcut to quickly set the default zoom level for a website. Press Ctrl on Windows or Cmd on Mac while doing any of the following:

1. Mouse scroll.
2. Press the Minus (-) or Plus (+) key.
3. Press 0 to reset the zoom level to 100 percent.

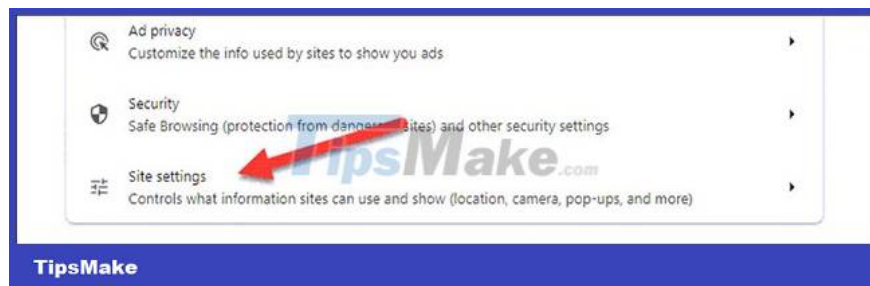
Manage zoom settings in Chrome

Click the three vertical dots in the top right corner of Chrome and select 'Settings'.

In the menu click 'Advanced' and then select the 'Privacy and Security' option.



Scroll down and click 'Site Settings'.



Now, look for the 'Zoom Levels' option located in the 'Content' section. In this menu, you can see the custom zoom levels you've set for any particular web page. Click Tap the "X" icon to remove this setting. Currently, Chrome doesn't let you set the zoom level here.



Whether you have trouble reading small text, want to avoid eye strain, or need to fit a large web page onto a small screen, these tips will help you achieve a healthier and more productive browsing experience.

You finished reading the article "**How to change Chrome's default zoom settings**" edited by the [TipsMake](#) team. We hope this article has provided you with many useful tech tips and tricks. You can search for similar articles on tips and guides. Thank you for reading and for following us regularly.