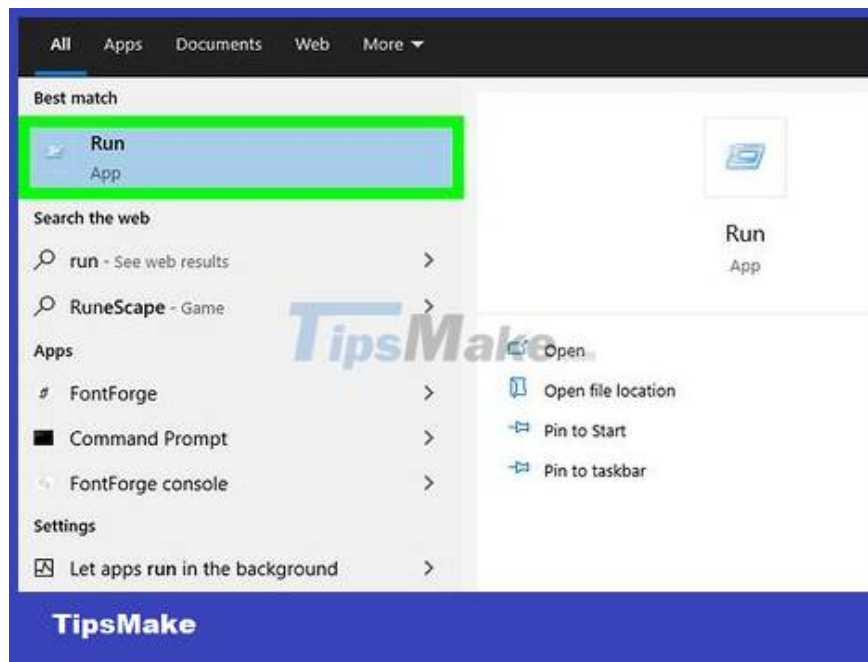


How to Cancel Automatic Shutdown on Windows 10

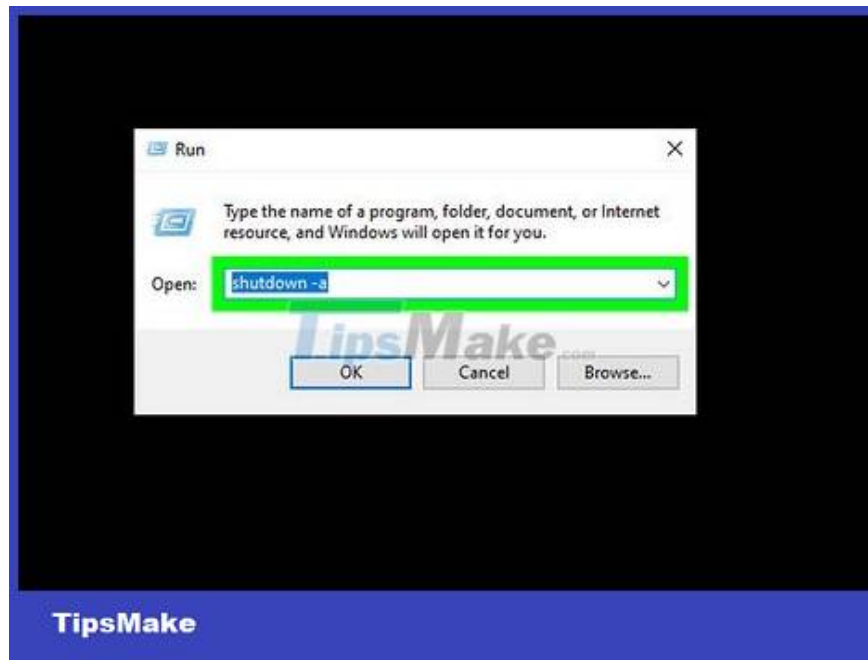
Windows 10 has a feature that automatically shuts down according to the plan that you set. But there will be times when you work or play games late and don't want the device to automatically turn off. TipsMake today will guide you how to execute the command line to cancel the automatic shutdown feature on Command Prompt as well as PowerShell. However, if you use power saving settings to reduce battery consumption when the laptop is not plugged in, you may need to change these settings in the Power section.

Use Run, Command Prompt or PowerShell

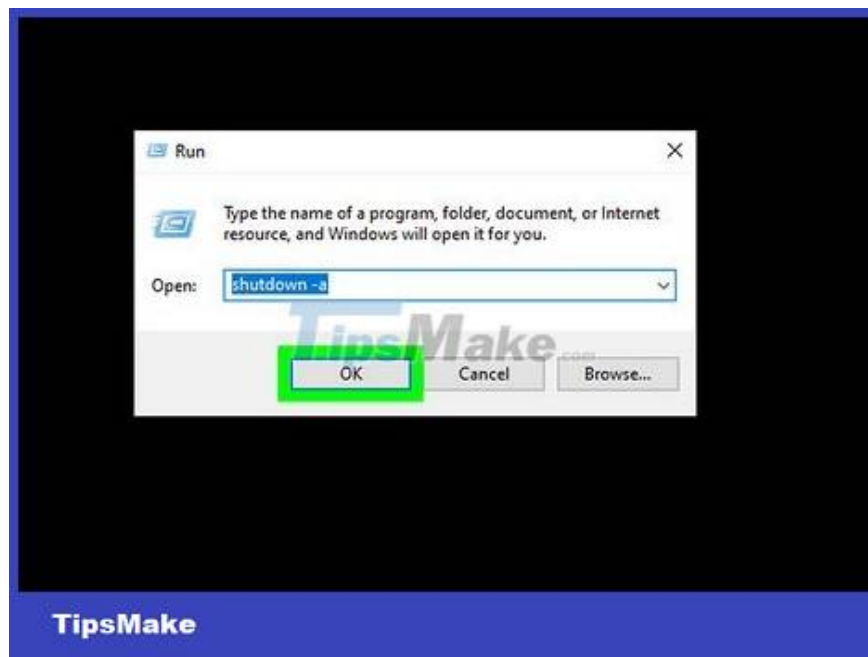


Press Win + R (to open the Run dialog box) or proceed to open Command Prompt or PowerShell. Press the Win + R key combination to open the Run window.

You can find Command Prompt or PowerShell in the Start menu. Because PowerShell is an alternative to Command Prompt on many modern Windows 10 computers, you can also select PowerShell in the pop-up menu after pressing Win + X.

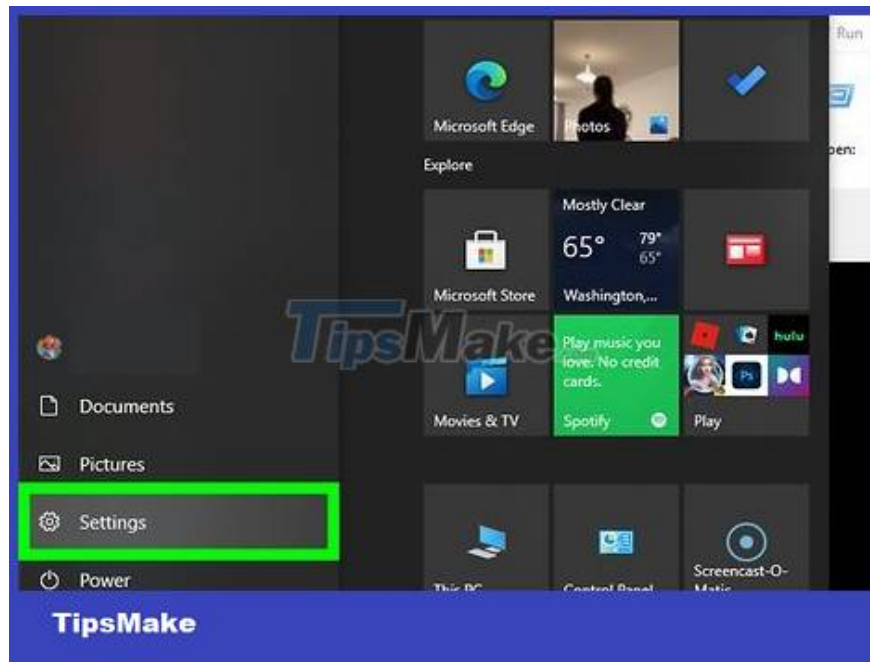


Enter the following command: `shutdown -a`. This command will cancel the shutdown schedule for a while. You'll need to repeat this if you want to cancel other scheduled shutdowns.

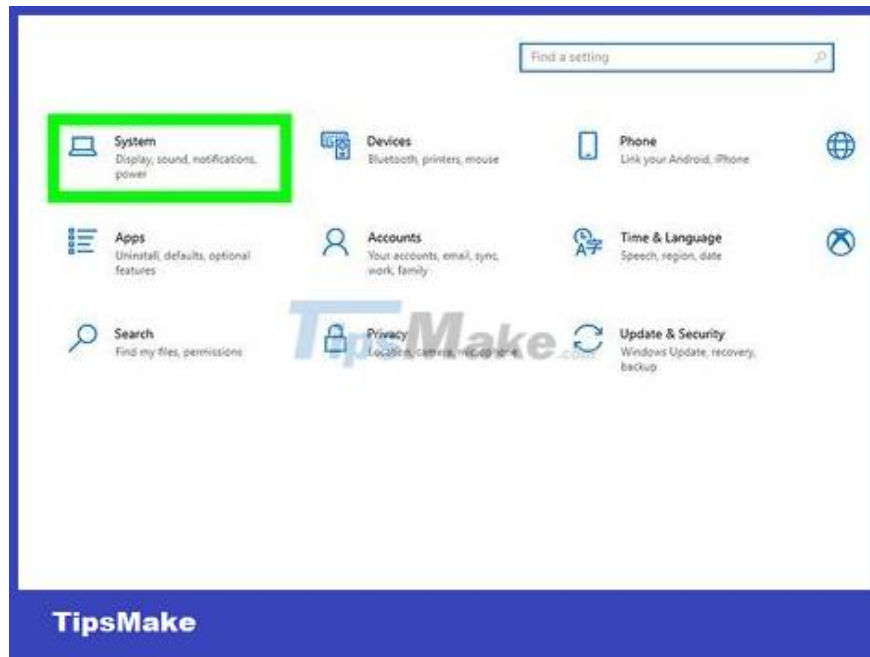


Click OK (in the Run window) or `Enter` (in the Command Prompt or PowerShell). This option is located below the data field on the Run window where you just entered the code. After you click that, the Run window will close.

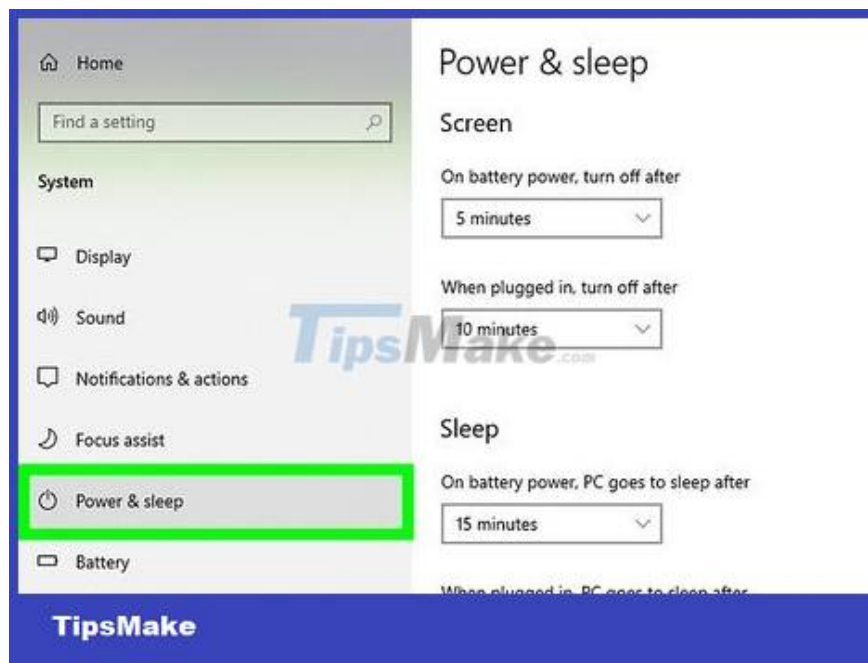
Using Power options



Open the Settings section. You can press Win + I to open Settings or find the option with this gear icon in the Start menu.



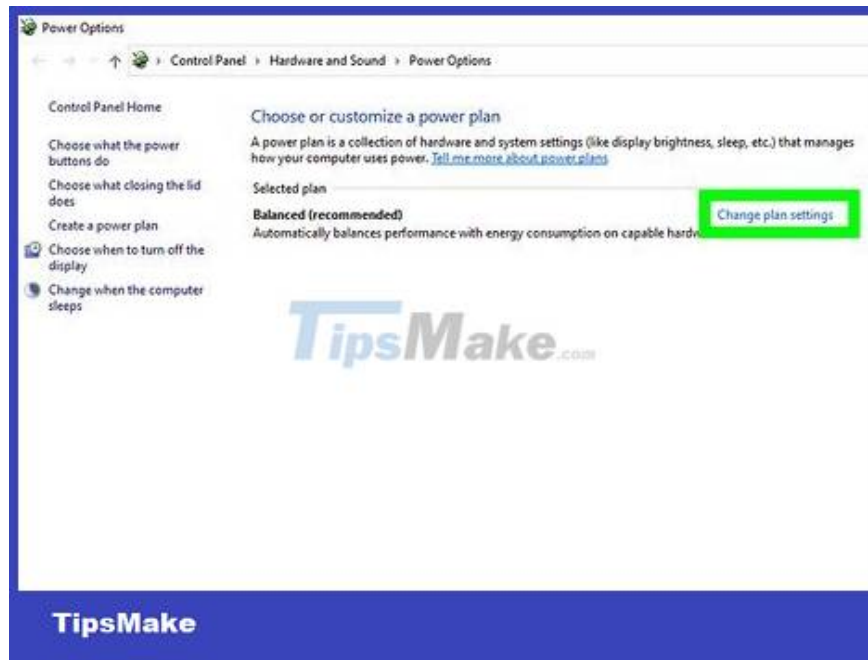
Click System . This is the first option in the menu.



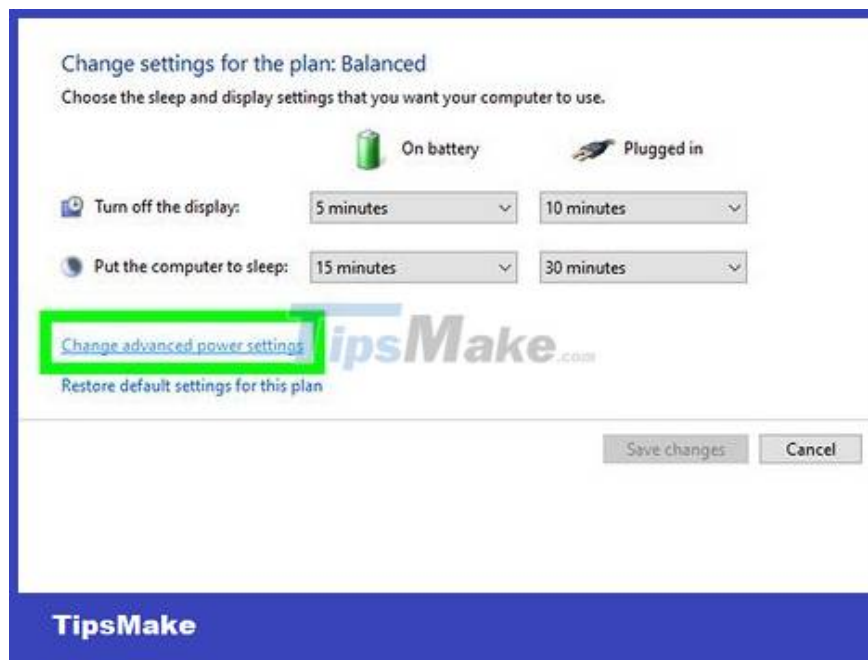
Click Power and sleep . This option is in the menu on the left side of the window.



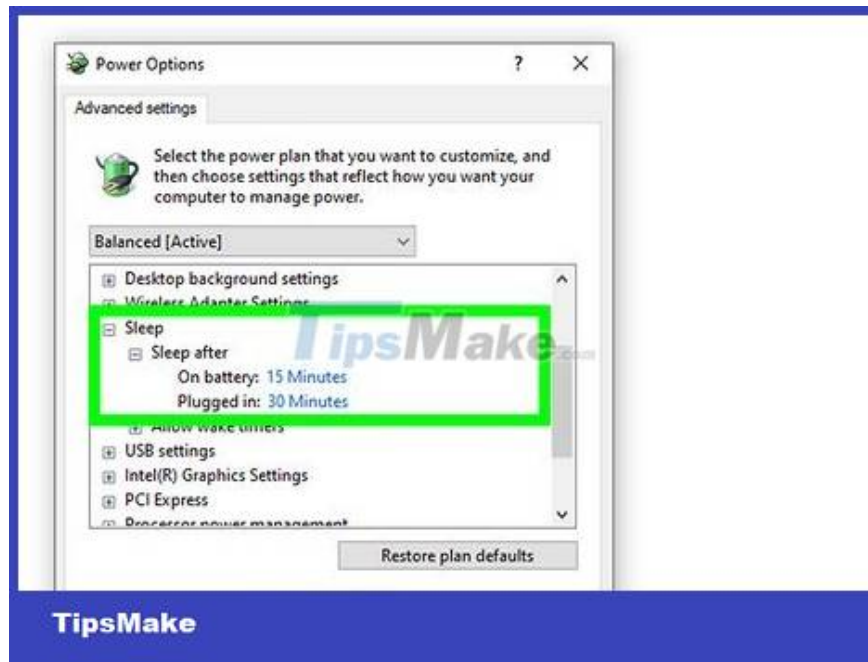
Click Additional power settings . This option is on the right side of the window.



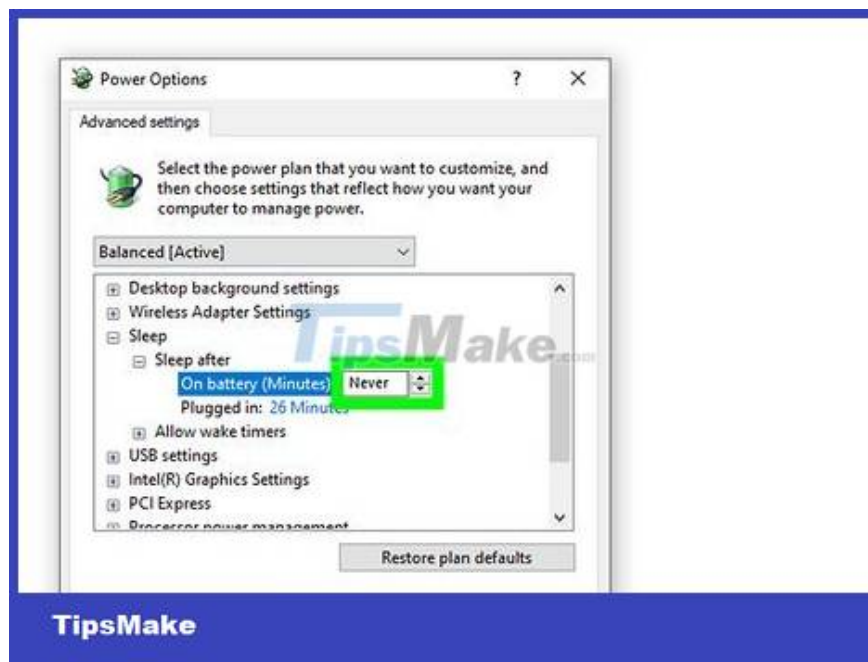
Click Change plan settings . This option is to the right of the current plan.



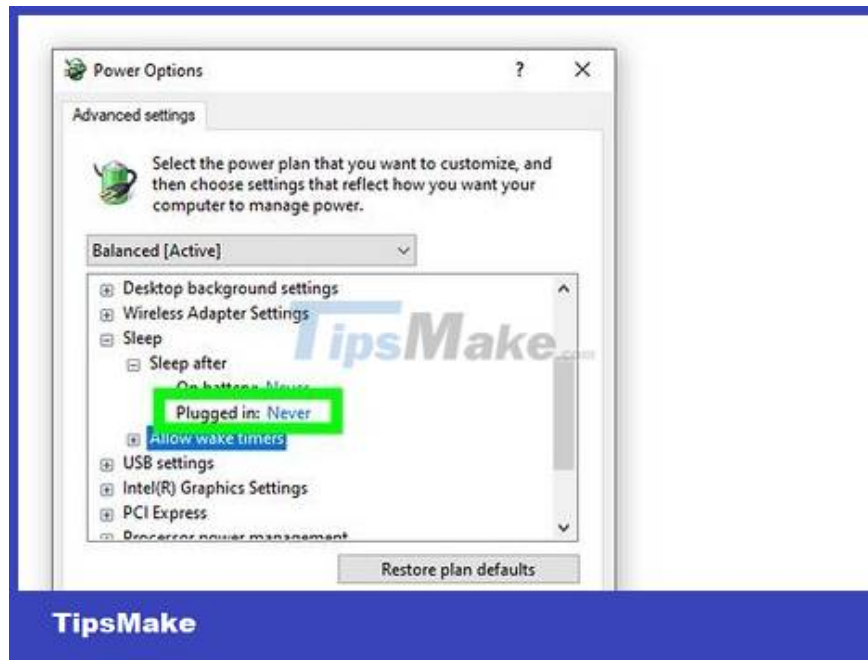
Click Change advanced power settings . This option is located under general settings.



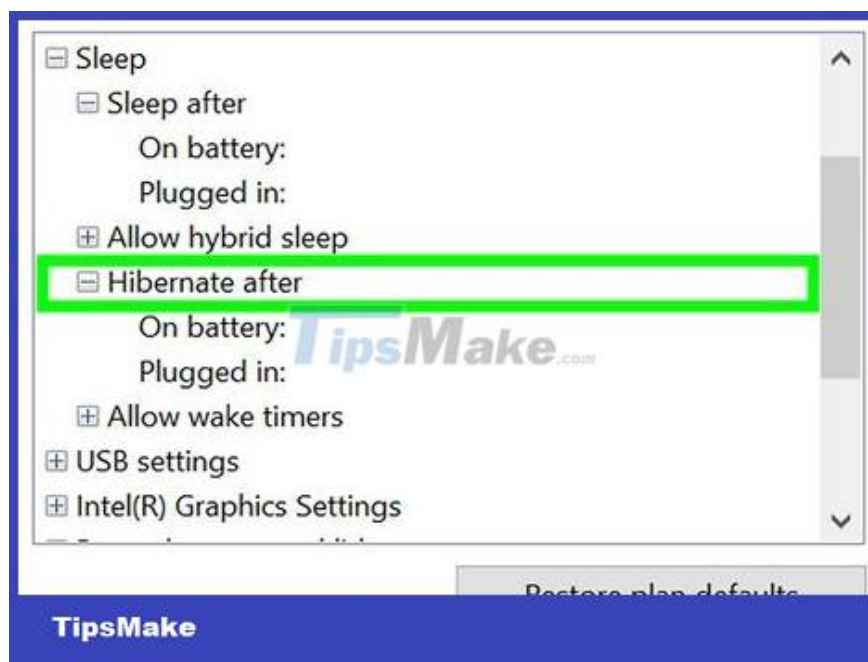
Double-click Sleep and Sleep After . When you double click these items will expand the menu.



Click On Battery or Plugged in , select the arrow, and then click "Never" (laptop only). If you want to change the settings of both of these options, repeat the previous steps with the other option.



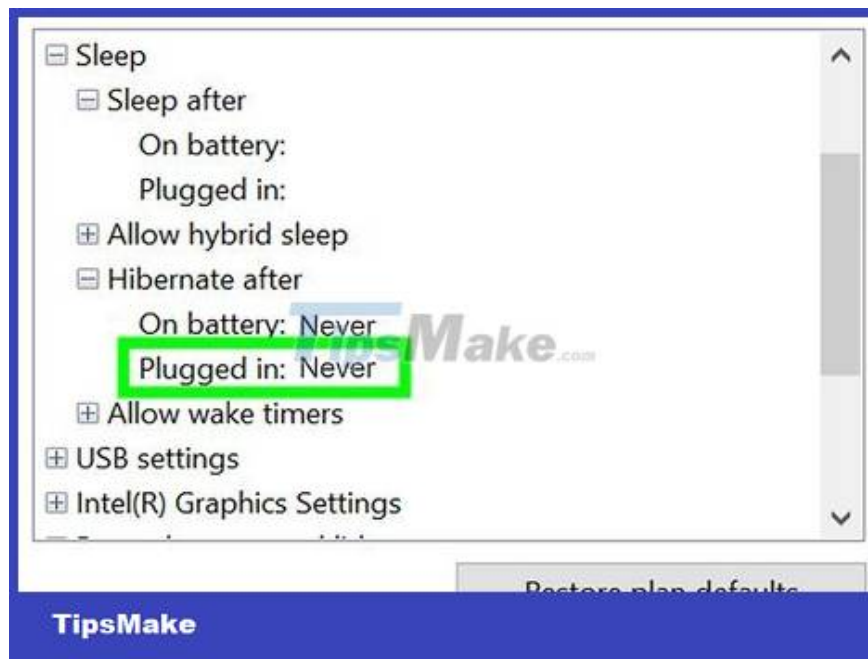
Click Setting , select the arrow and click "Never" (desktop only). This option is not available on laptops.
When you change the "Sleep" setting to "Never", the computer never sleeps.



Double-click Hibernate after . The menu will expand below the title.



Click On Battery or Plugged in , click the arrow and select "Never" (laptop only). If you want to change the settings of both of these options, repeat the previous steps with the other option.



Click Settings , then click the arrow and select "Never" (desktop only). This option is not available on laptops.

These settings ensure that the computer will never hibernate, but be aware that such settings can drain the battery if the laptop is not plugged in.

You finished reading the article "**How to Cancel Automatic Shutdown on Windows 10**" edited by the [TipsMake](#) team. We hope this article has provided you with many useful tech tips and tricks. You can search for similar articles on tips and guides. Thank you for reading and for following us regularly.
