

How to cancel a scheduled shutdown in Windows 10

The method for canceling a scheduled shutdown on Windows 10, 8, and 7 via the shutdown command is as simple and easy as setting it up, but it requires the user to know the exact command code and that it meets the system's requirements. For detailed instructions, please refer to the content below.

There are many ways to schedule a computer shutdown, such as using software or commands. In our tutorial series, Taimienphi has shown you how to schedule a computer shutdown without software, simply using the ``shutdown`` command . However, after setting a timer, many users want to cancel the **scheduled shutdown in Windows 10**. So how do you do that? In this article, Taimienphi will guide you **on how to cancel the scheduled shutdown** on Windows 10, 8, and 7.



How to cancel a scheduled shutdown on Windows 10

Article contents:

Method 1: Canceling a scheduled shutdown in Windows 10 using the Run command.

Method 2: Canceling a scheduled shutdown in Windows 10 using CMD.

Method 3: Canceling a scheduled shutdown in Windows 10 by restarting or logging off.

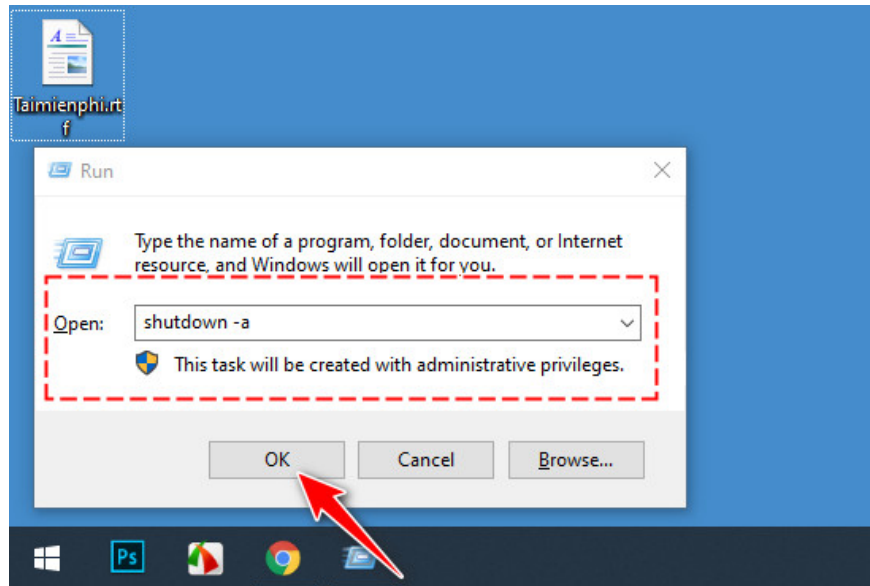
Instructions on how to cancel a scheduled computer shutdown.

In this article, Taimienphi will provide instructions using the Windows 10 interface; users of Windows 7 and 8 can refer to and follow these steps.

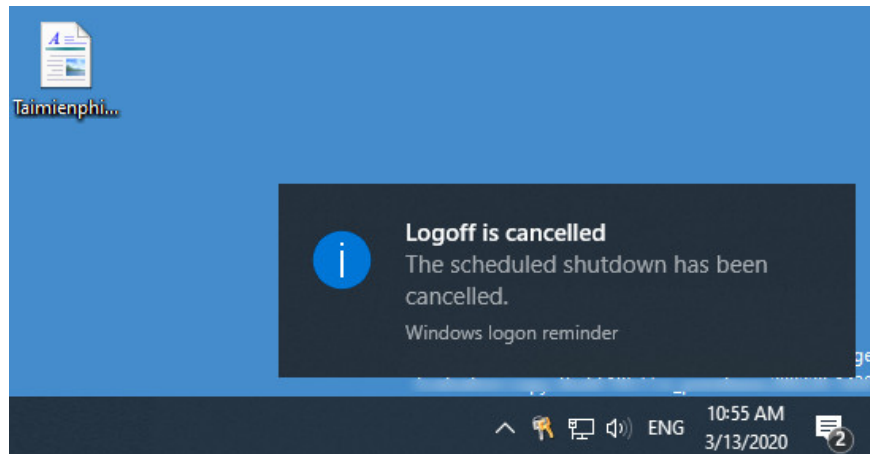
Method 1: Cancel the scheduled shutdown using the Run tool.

Step 1: Press the **Windows + R** key combination on your keyboard to open the **Run** tool .

Step 2: Enter the command `shutdown -a` into the tool. Then press **OK**.

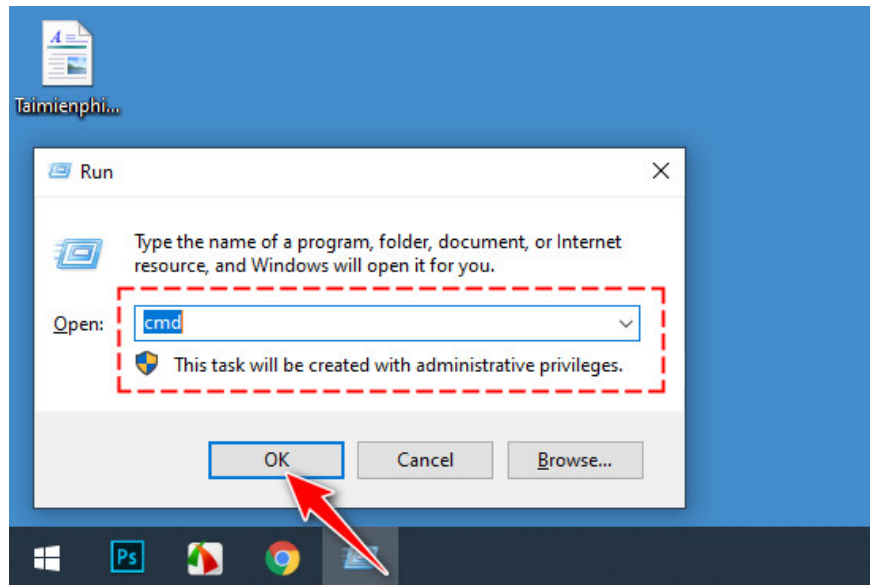


Immediately, a dialog box will appear stating "**Logoff is canceled** ," indicating that the shutdown timer cancellation has been executed.

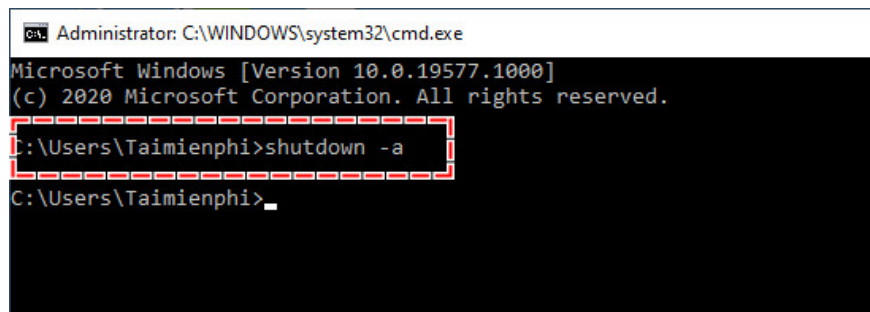


Method 2: How to cancel a scheduled computer shutdown using CMD.

Step 1: Similar to canceling a scheduled computer shutdown, press the **Windows + R** key combination on your keyboard to open the **Run** tool . In the toolbar, type the command `cmd` .



Step 2: In the CMD window, enter the command ``shutdown -a`` . Press Enter to execute the command.



The system will also display the message "**Logoff is cancelled**" - successfully canceling the scheduled shutdown command, similar to **Method 1** .

Method 3: How to easily cancel a scheduled computer shutdown.

When you use the shutdown command to set a timer, the simplest way to cancel the scheduled shutdown is to manually **restart** or **log off** your computer. By default, the system will automatically delete all previously set timer commands.

Recently, Taimienphi shared with you 3 ways to cancel a scheduled shutdown command on Windows 10 using the Shutdown command. Hopefully, these methods will be useful, helping you set or cancel a scheduled shutdown command quickly and as you wish. Additionally, you can check out the top Windows 10 computer timer software here.

You finished reading the article "**How to cancel a scheduled shutdown in Windows 10**" edited by the [TipsMake](#) team. We hope this article has provided you with many useful tech tips and tricks. You can search for similar articles on tips and guides. Thank you for reading and for following us regularly.