

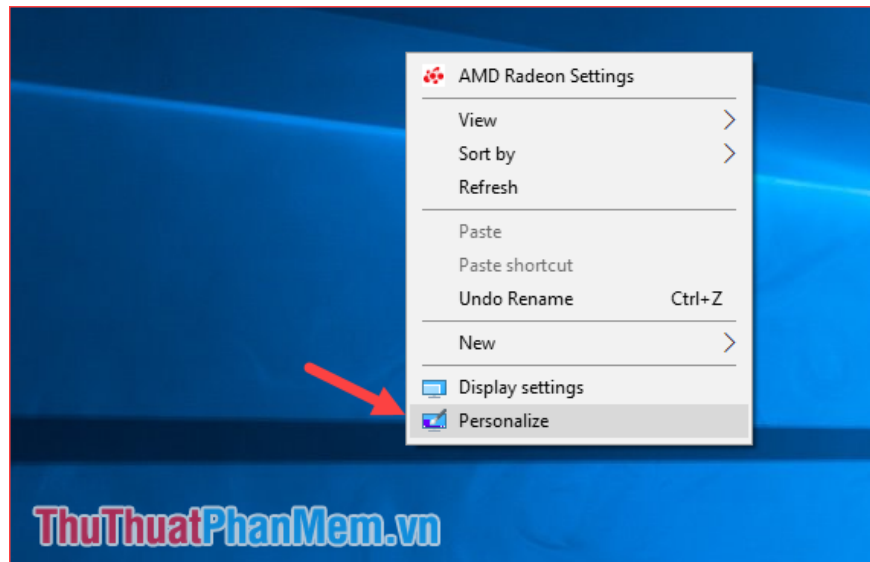
How to bring This PC (Computer), Network, Control Panel icon to the Desktop screen on Windows 10

How to bring This PC (Computer), Network, Control Panel icon to the Desktop screen on Windows 10. By default, when reinstalling Windows, the Desktop screen will have nothing but the trash icon. Icons like This PC, Network

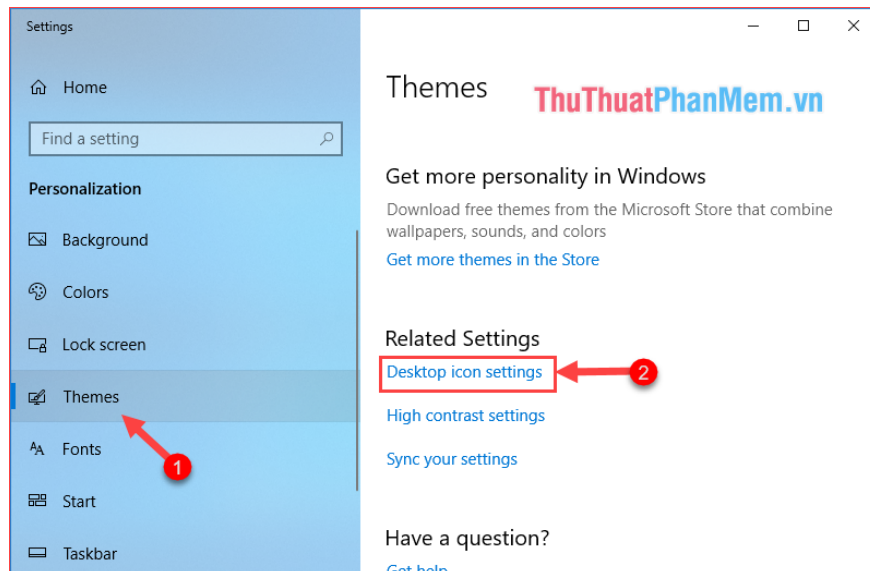
By default on a new computer or when reinstalling Windows, the desktop will have no icons other than the trash icon. Icons such as This PC, Network, Control Panel are the most frequently used features that do not appear. Many people do not know how to put these icons on the Desktop so they have to access the above features in a very time-consuming way, so in the following article, TipsMake.com will guide you to put the icons. This PC, Control Panel, Network and User go to the Desktop on Windows 10, please follow along.



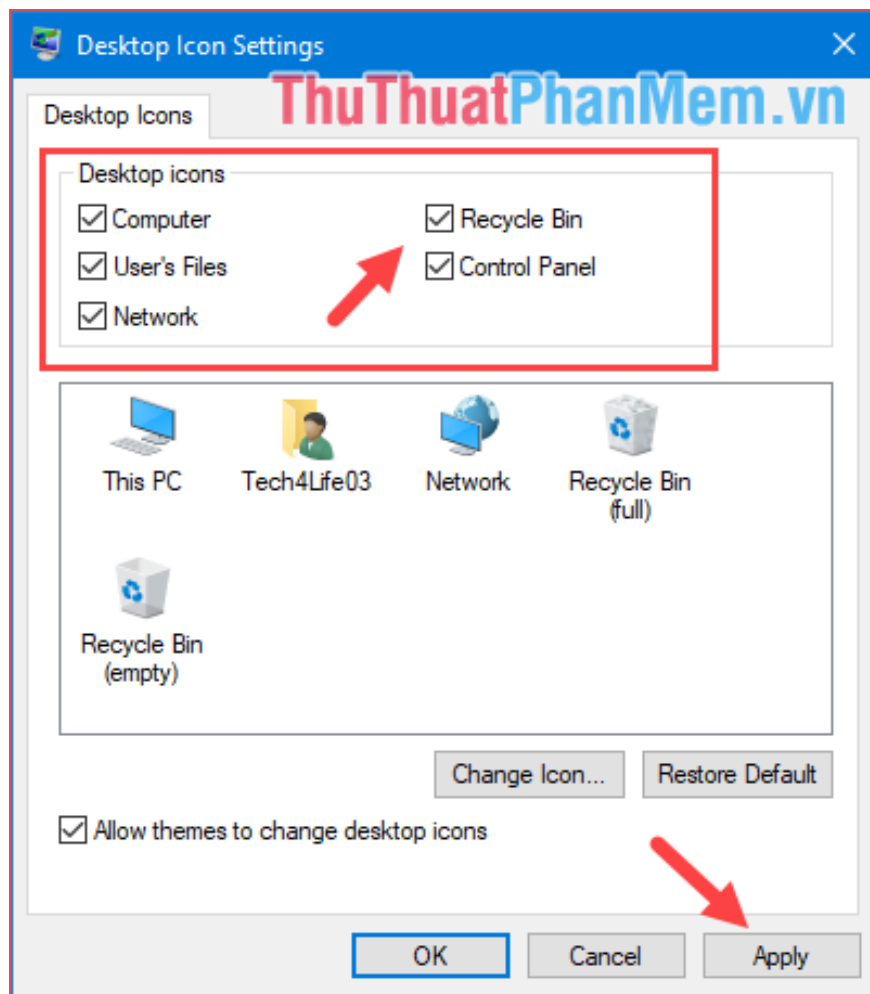
Step 1 : Right-click on the Desktop and select **Personalize**



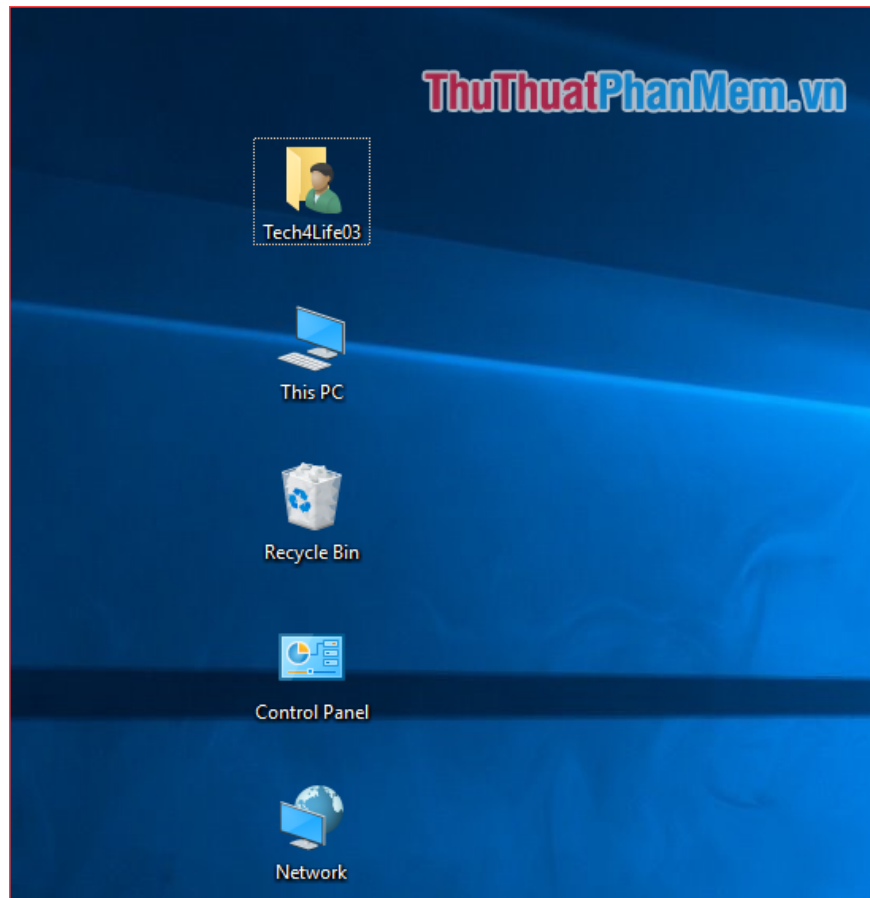
Step 2: A new window appears, select Themes, then on the right side, scroll down and select **Desktop icon settings**.



Step 3: A new window will appear, in the Desktop icons section, which icons do you want to show, then tick the icon, here I will select them all, then click OK to finish.



Now you return to the Desktop to see the icons appear:



So with just a few simple steps, we can bring This PC, Control Panel, Network icons to the Desktop screen on windows 10. Thank you for watching the article!

You finished reading the article "**How to bring This PC (Computer), Network, Control Panel icon to the Desktop screen on Windows 10**" edited by the [TipsMake](#) team. We hope this article has provided you with many useful tech tips and tricks. You can search for similar articles on tips and guides. Thank you for reading and for following us regularly.