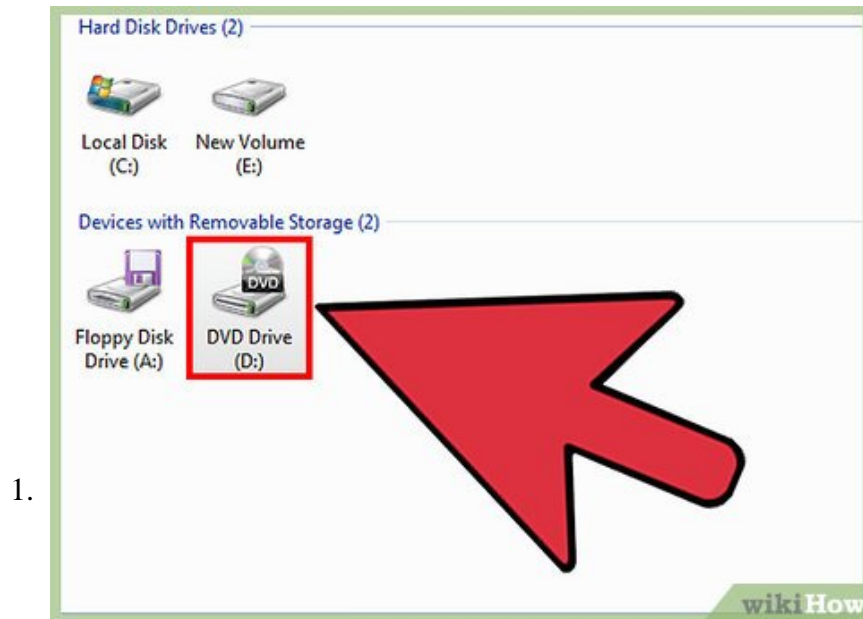


How to Boot Vista in Safe Mode

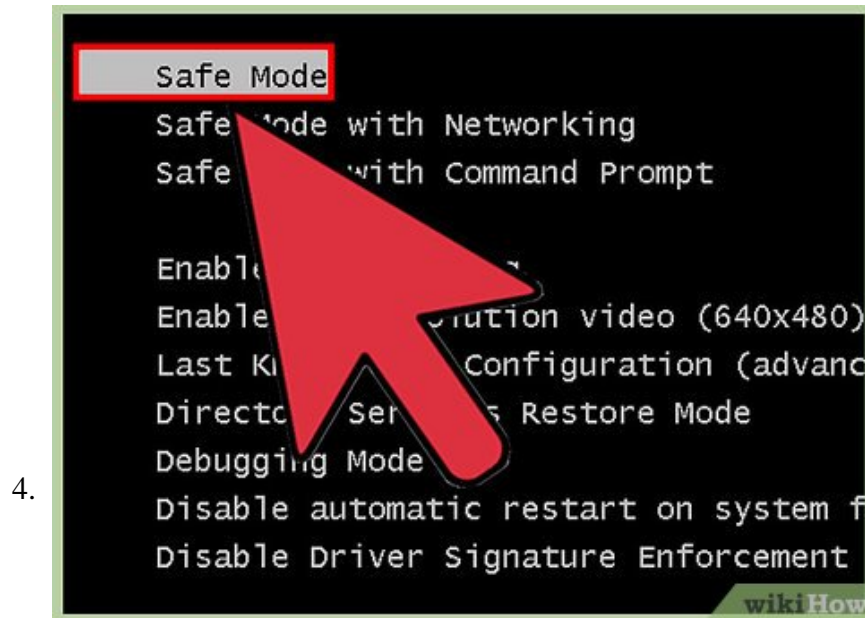
In Windows Vista, when you boot into safe mode, only those things necessary for Windows to start are loaded. Any unnecessary programs and drivers aren't loaded during the boot process. Safe mode is useful in terms of diagnosing problems...

Method 1 of 2:

Booting in Safe Mode



Make sure you don't have any disks, CDs, or DVDs in your computer. If there are any, remove them.



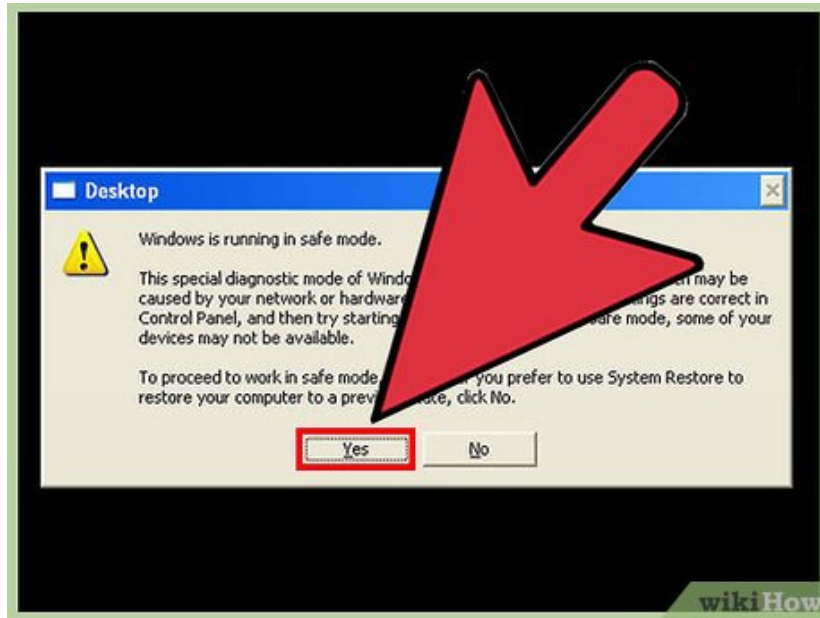
On the Advanced Boot Options screen, use the up or down arrow keys to select Safe Mode, and then press **ENTER.**

1. Safe Mode with Networking will let you access the internet and other networks in safe mode.^[3]
2. Safe Mode with Command Prompt will load a command prompt interface, instead of the usual graphical Windows interface. This is intended for advanced users.



Login to the computer as an administrator. In order to access your computer in safe mode, you'll need administrative rights.

6.

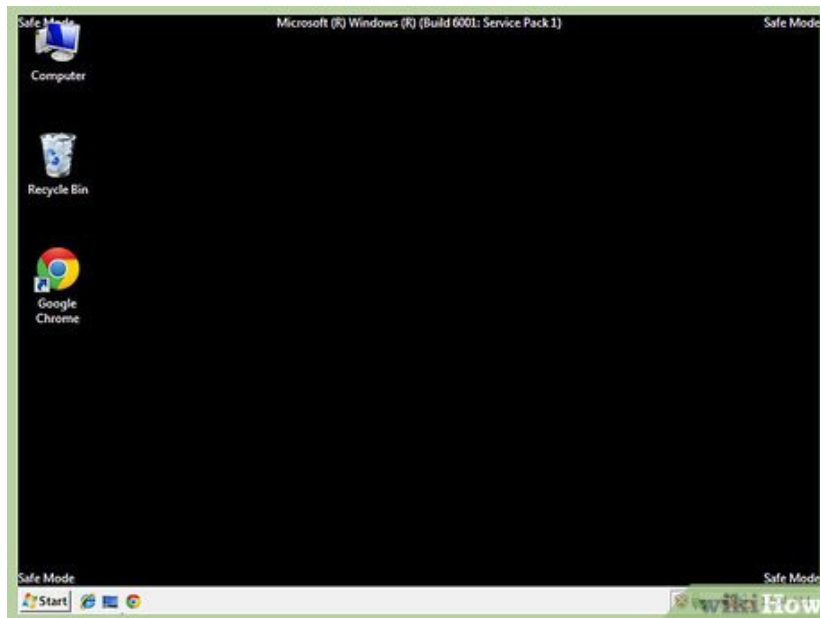


Finish starting up in safe mode. In the dialog box that asks if you'd like to proceed in safe mode, click .

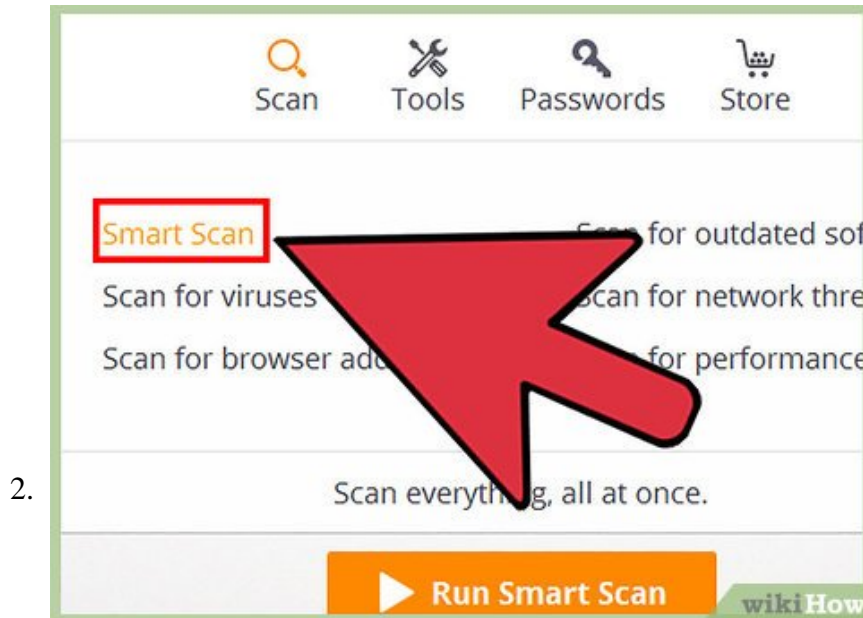
Method 2 of 2:

Performing System Maintenance in Safe Mode

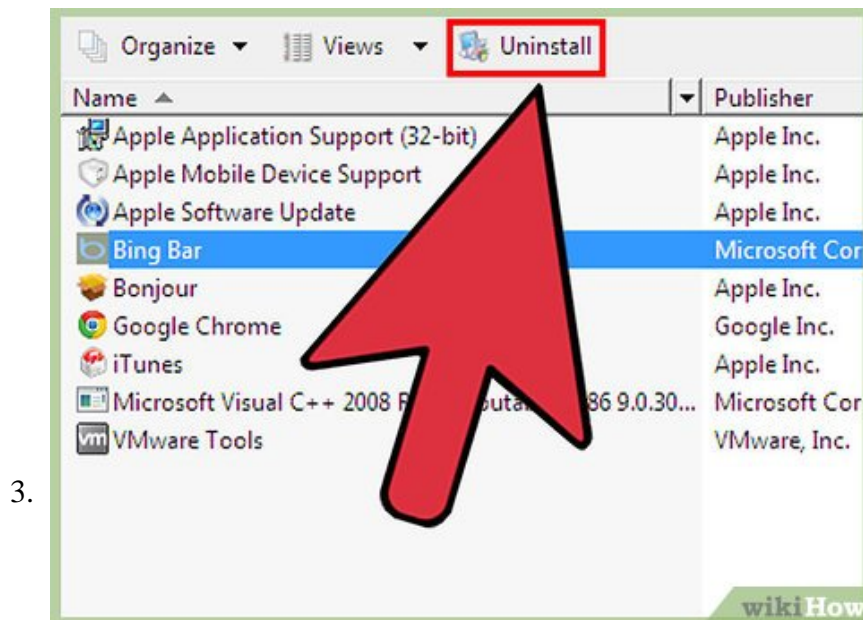
1.



Check whether your computer crashes in safe mode. If you've been having problems with your computer crashing, but your computer doesn't crash in safe mode, that's a strong indication that pre-loaded software is responsible. If your computer crashes in safe mode, it means there's probably a hardware problem.^[4]

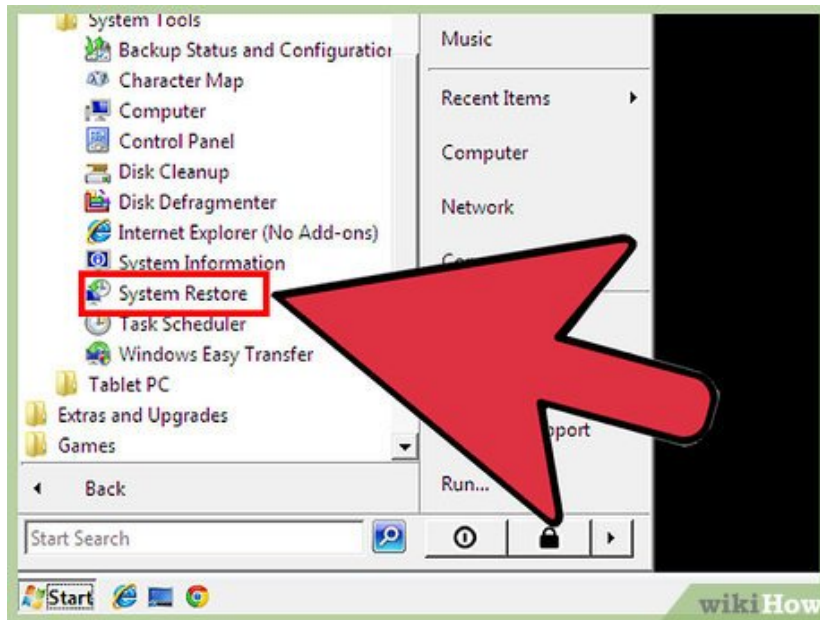


Scan for malware and viruses. While in safe mode, use your antivirus software to scan for malware and viruses. Often, malware and viruses are only removable while in safe mode.



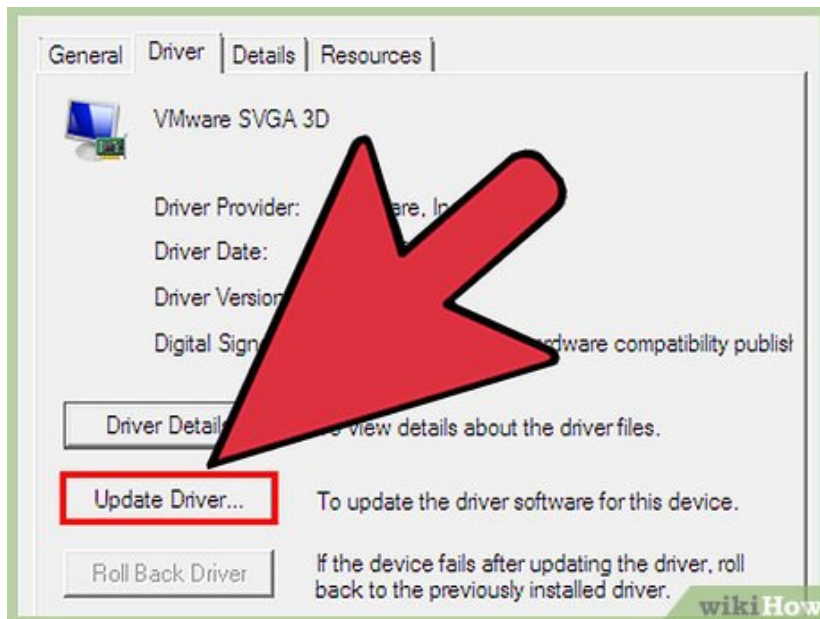
Uninstall recently installed software. If your computer started having problems after installing a new software program, use the Control Panel to uninstall it.

4.



Use System Restore to revert to an earlier, stable version of your computer. In order to use System Restore, you will need to have previously created system restore points.^[5] You can access System Restore from the Start menu.

5.



Update your computer's hardware drivers. If your computer crashes in normal mode and in safe mode, you may need to update your computer's hardware drivers. Use the Device Manager utility to update your hardware drivers.^[6]

You finished reading the article "**How to Boot Vista in Safe Mode**" edited by the [TipsMake](#) team. We hope this article has provided you with many useful tech tips and tricks. You can search for similar articles on tips and guides. Thank you for reading and for following us regularly.