

How to blur photos in PowerPoint

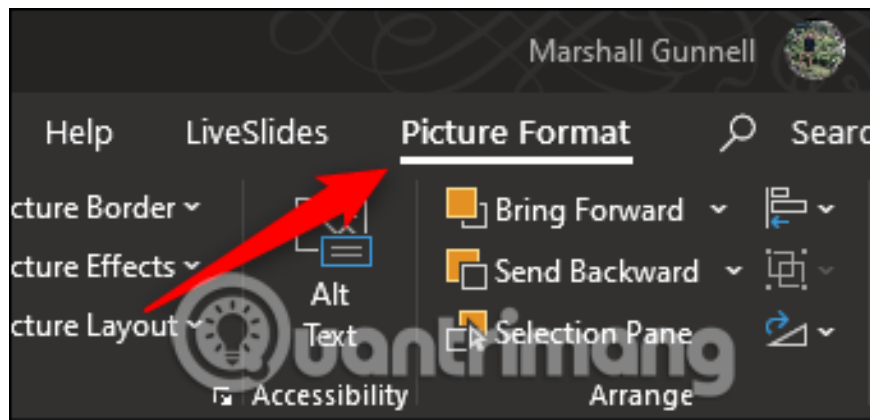
If you need to blur all or part of a photo that contains sensitive information, you can do it directly in PowerPoint and this is the way to do it.

If you need to blur all or part of a photo that contains sensitive information, you can do it directly in PowerPoint and this is the way to do it.

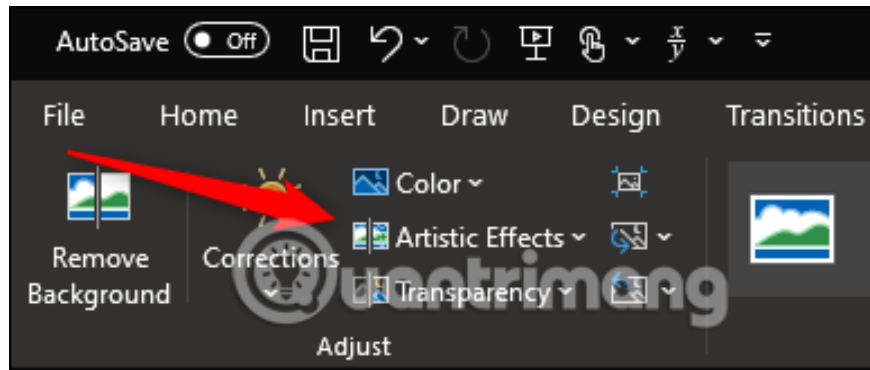
1. How to blur the background image in PowerPoint
2. How to insert images below the word on PowerPoint
3. How to create PowerPoint color schemes

Blurring photos completely

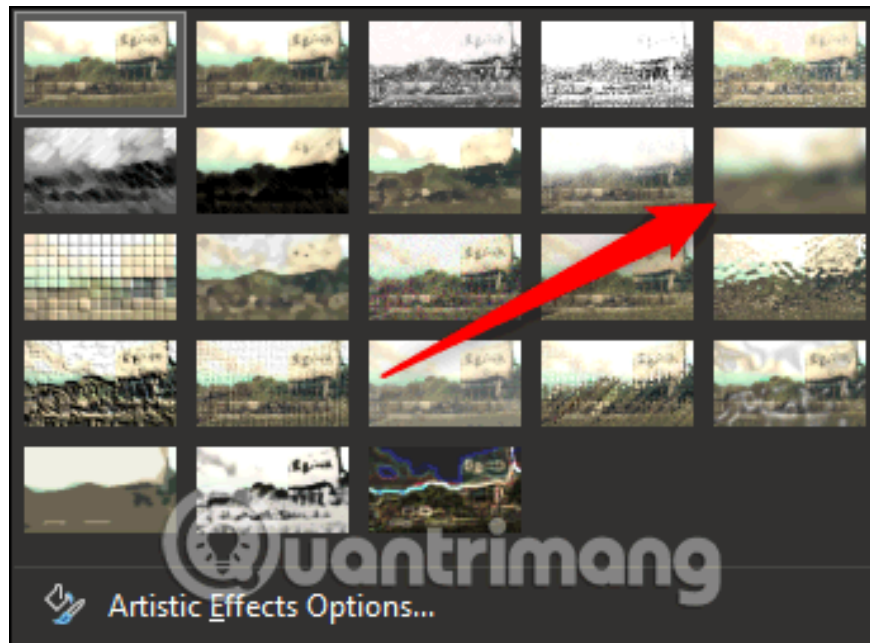
First, open PowerPoint and navigate to the slide containing the image you want to blur. Select the image and you will see the **Picture Format** tab appear.



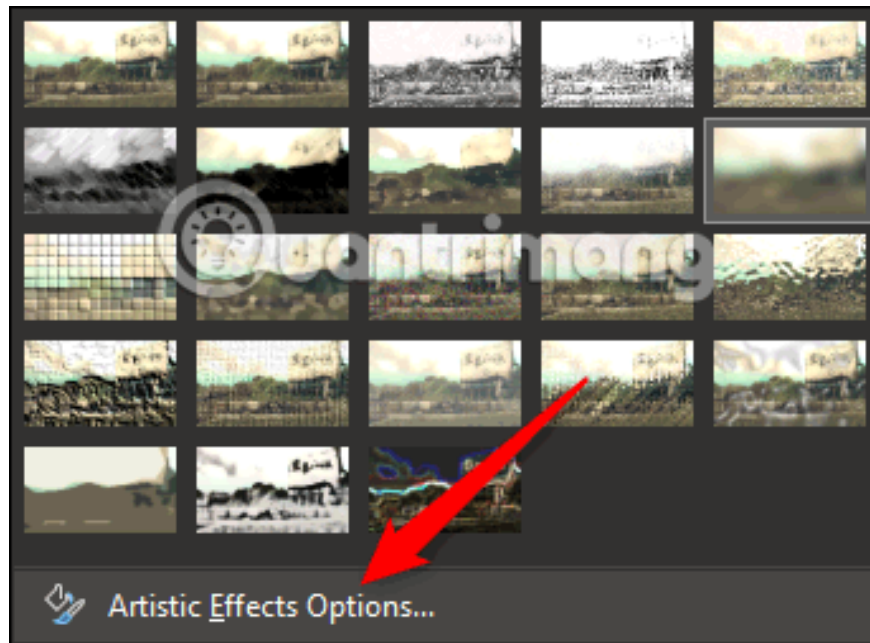
Next, select **Artistic Effects** from the **Adjust** group.



In the drop-down menu that appears, click on the **Blur** option.



The image will be completely blurred. If the opacity is not as expected, you can adjust it manually. Back to the Artistic Effects drop-down menu, select **Artistic Effects Options** .



From the Format Picture frame appears on the right side of the window. In Artistic Effects, find the bar next to **Radius** and drag the settings to the right to increase the image blur until satisfied.



If you just want to blur a specific part of the image instead of the whole image. Although it is not a simple process, it can still be done with the steps below.

Blur part of the image

According to Office, no blurring tool is specifically designed to blur part of an image. This trick requires the use of other tools.

First, insert a shape on the part of the image you want to blur. You can use one of the default shapes from the **Illustrations** group on the **Insert** tab or draw any shape.

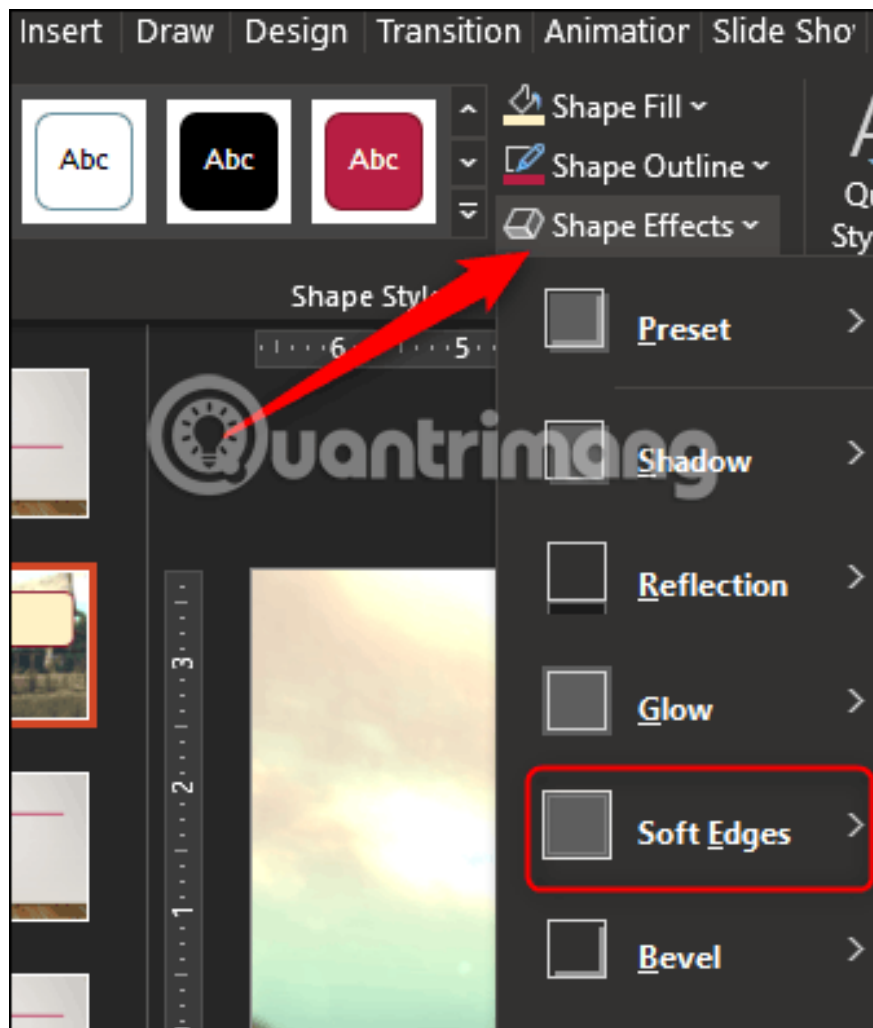
Once you've finished painting or inserting the image, adjust it to match the part you want to blur.



After inserting the shape, go to the **Shape Format** tab. In the **Shape Styles** group, select **Shape Fill** and then select **Eyedropper** from the drop-down menu.



This will allow you to select a part of the image close to the color you want to create. Next, return to the **Shape Styles** group of the **Shape Format** tab. Click **Shape Effects** and then select **Soft Edges** from the drop-down menu that appears.



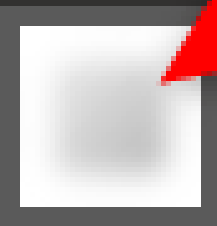
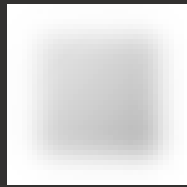
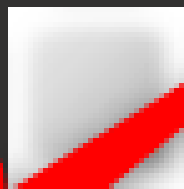
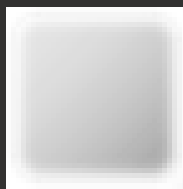
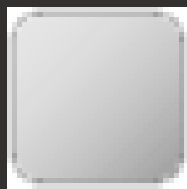
On the small menu that appears, you will see several different types of edges. Choose the most suitable one. For this example, we use 25 Point.

No Soft Edges



quantrimang

Soft Edge Variations



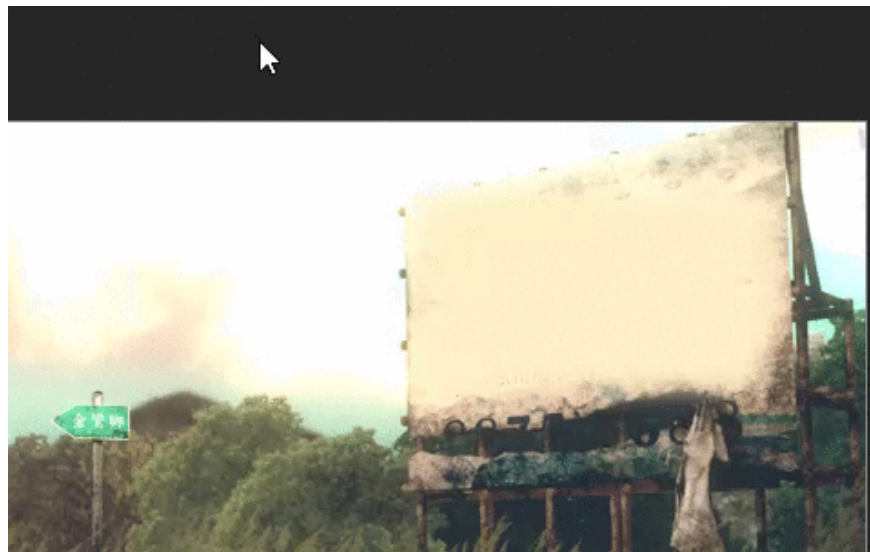
Soft Edg 25 Point ...

....

The specific part of the image has been blurred without unnecessary attention.

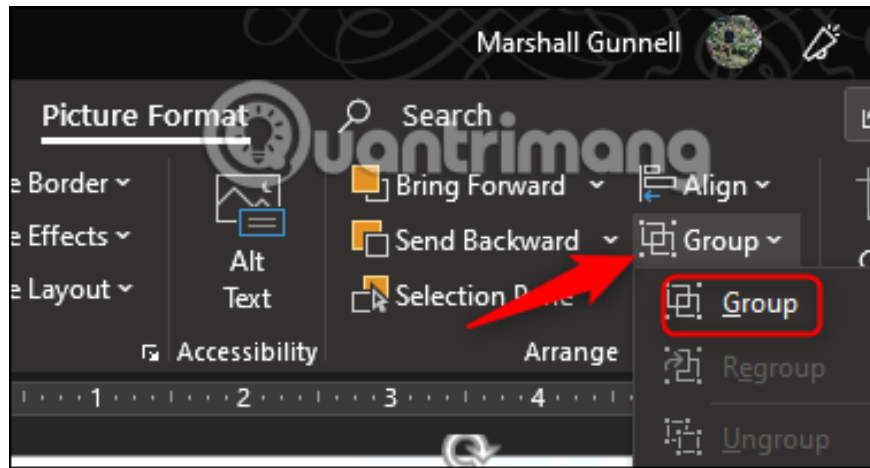


Now, you need to group images and shapes together if you want to adjust it later. To group, hold down **Ctrl** and click on both objects.



Now, in the **Picture Format** tab, select **Group** from the **Arrange** section. In the drop down menu, click on **Group** .

Picture 12 of How to blur photos in PowerPoint



Two objects have been grouped together so you can adjust the background while the blurred shape remains in place.

I wish you all success!

You finished reading the article "**How to blur photos in PowerPoint**" edited by the [TipsMake](#) team. We hope this article has provided you with many useful tech tips and tricks. You can search for similar articles on tips and guides. Thank you for reading and for following us regularly.