

# How to blur photos in Corel

Blur images in Corel In Corel software we have many different ways to blur, but TipsMake will introduce you the simplest and most common way. Step 1: First, you open the image to be blurred in Corel and Right-click the image to select as the object

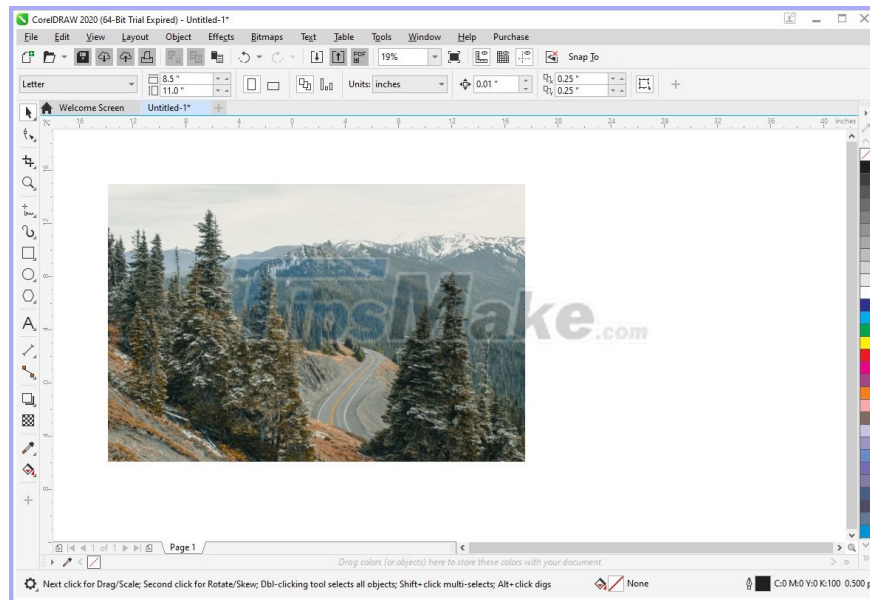
With Corel Draw's toolkit, you can freely create digital content, digital, print without worrying about breaking. Many people also choose Corel as an image editing tool because Corel's set of effects is also very powerful. However, Corel has very useful image blurring features, but not everyone knows! In this article, TipsMake will guide you how to blur images in Corel.



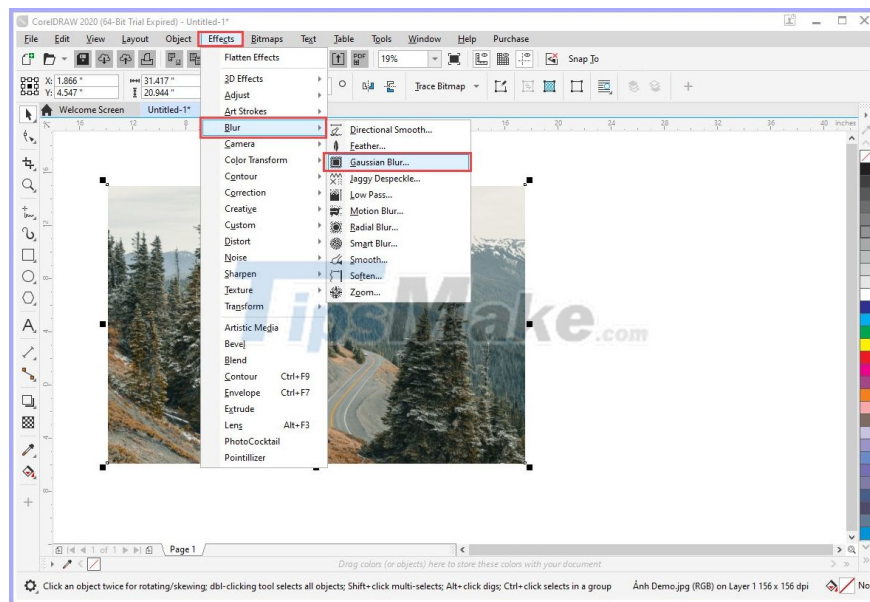
## 1. Blur images in Corel

In Corel software we have many different ways to blur, but Software Tips will introduce you to the simplest and most common way.

**Step 1:** First, you proceed to open the image to be blurred in Corel and Right-click the image to select as the object to edit.



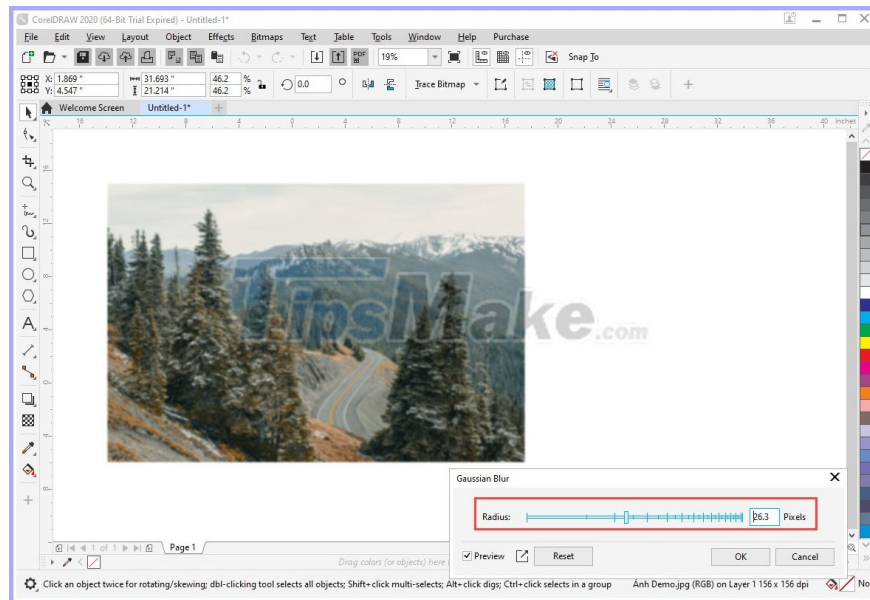
**Step 2:** After that, select **Effects -> Blur -> Gaussian Blur** .



**Step 3:** Now you will see the **Gaussian Blur** window appear, you **adjust the Radius bar** to increase / decrease the image blur.

*Note:* To preview the editing results, please tick the *Preview* item on the *Gaussian Blur* window

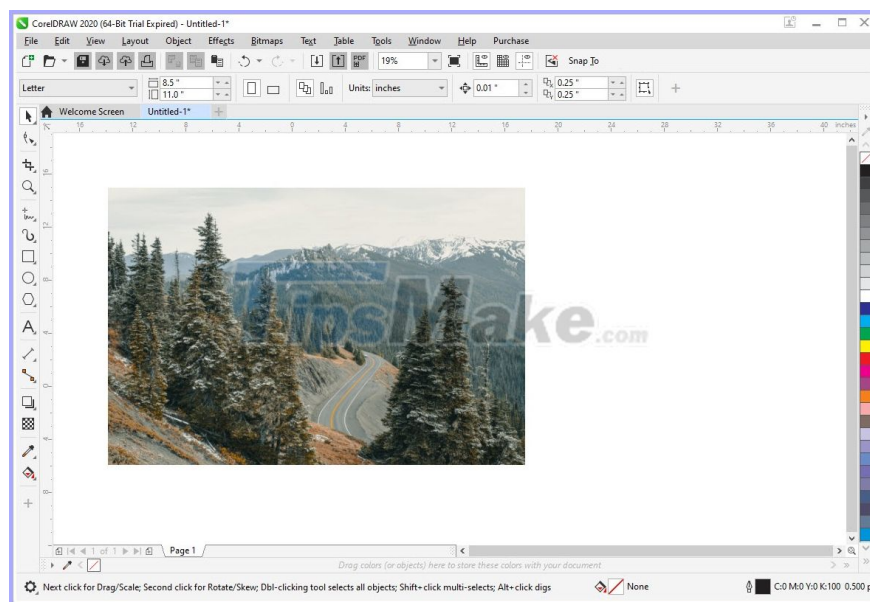
After completing, you select **OK** to save is finished.



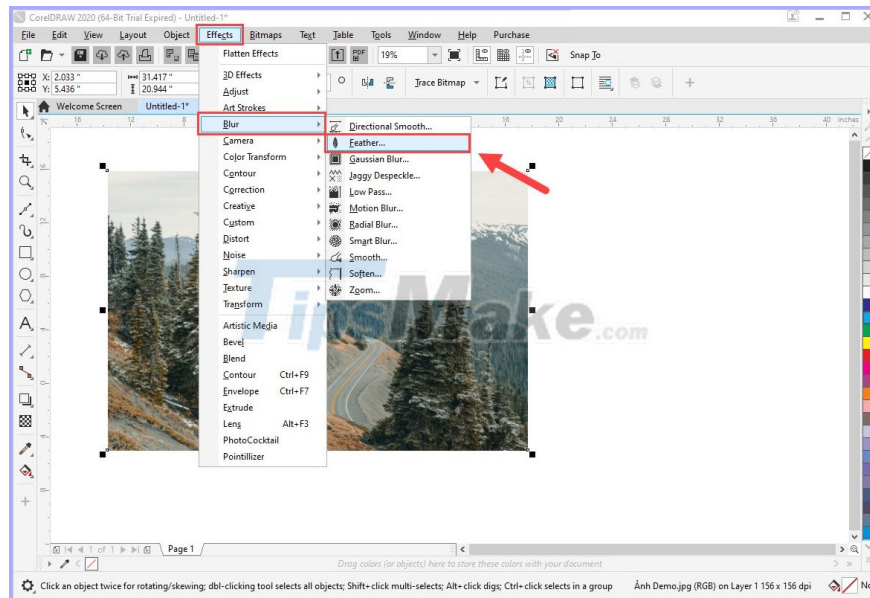
## 2. Blur image borders in Corel

Image border blurring is often applied when printing or creating image content surrounded by an external frame. To create a blurred border, please do the following:

**Step 1:** First, you open the image to be blurred in Corel and Right-click on the image to select the object to edit.



**Step 2:** Next, you proceed to select **Effect -> Blur -> Feather** .

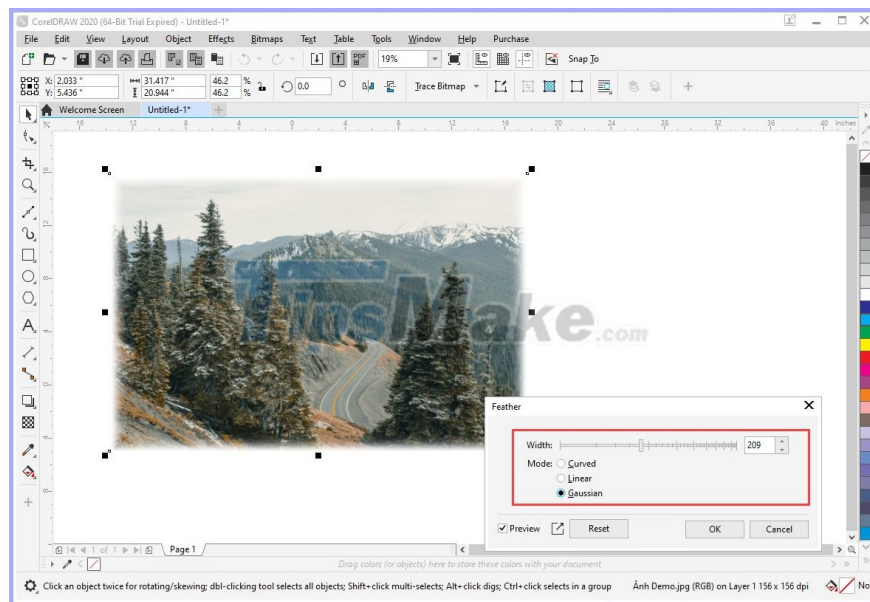


**Step 3: Feather** window appears, proceed to set as follows:

1. **Width:** The width of the border to be blurred
2. **Mode:** Mode
3. **Curved:** Blur the border and shrink from the outside to the inside
4. **Linear:** Blur the border and zoom out from the inside out
5. **Gaussian:** Only dims the border, no resizing

*Note: To preview the editing results, please tick the Preview item on the Gaussian Blur window*

After completing, you select **OK** to save is finished.



Good luck!

You finished reading the article "**How to blur photos in Corel**" edited by the [TipsMake](#) team. We hope this article has provided you with many useful tech tips and tricks. You can search for similar articles on tips and

guides. Thank you for reading and for following us regularly.

---