

How to block Microsoft Edge from running underground

Microsoft Edge is a core component in Windows and a Trusted App, so it cannot be uninstalled or removed.

If you are one of those who want to eliminate Microsoft Edge, the default web browser is included in Windows 10, you are not alone. Microsoft Edge is a core component in Windows and a **Trusted App**, so it cannot be uninstalled or removed. The Edge also occasionally pops up to remind users how different browsers are ineffective. But this is probably still not enough motivation to make users switch to using it. In fact, Microsoft Edge is more annoying than bringing useful things.

However, for some reason you do not want to remove Edge from Windows 10, you can disable or prevent Edge from running on the computer as instructed below.

How to prevent Microsoft Edge from running underground?

1. Why is Microsoft Edge running underground?
2. Change the default browser
3. Set the default browser
4. Disable application Edge Edge
5. Disable Edge by editing the Registry
 1. Prevent pre-launch processes in Microsoft Edge
 2. Prevent the Start and New Tab tabs from loading themselves first
6. Disable Edge using Local Group Policy Editor

Why is Microsoft Edge running underground?

Edge has increased performance in the Windows 10 update in October 2018, or version 1809, allowing it to launch processes and load **Start** and **New Tab tabs** before booting.

These optimizations waste resources and slow down the computer's boot process, especially if users don't use it as a browser. However, users can disable this and remove Edge from the browsing experience so it won't be annoying. The first two ways can apply to all versions, the last two only apply to Home or Pro versions.

Change the default browser

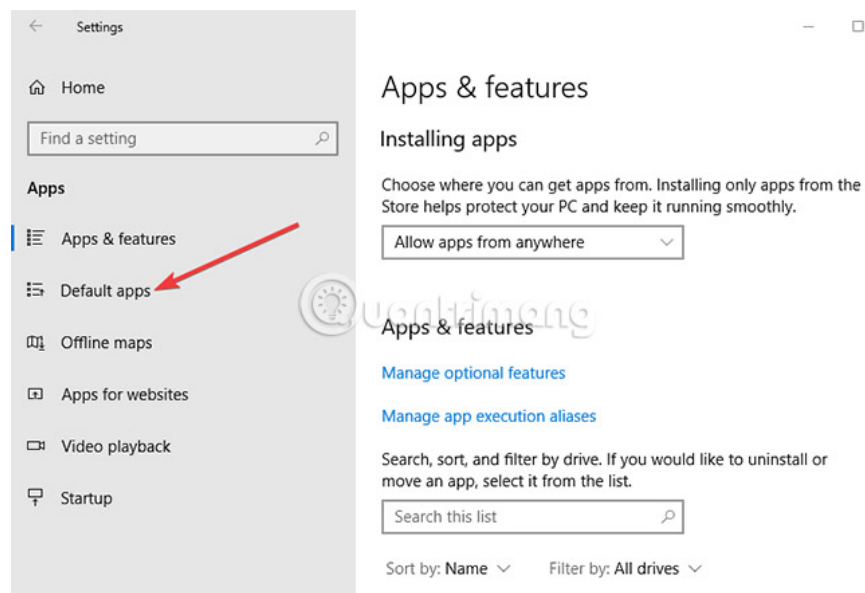
Users are not stuck with Edge at all, as there are a number of other web browsers that can opt for alternatives including Chrome, Opera or Mozilla Firefox.

If the default browser is set to Edge, users can download one of the other popular browsers from Edge itself if not already available. To do this:

1. Download the browser you want to install (Chrome, Opera or Firefox).
2. Locate the download link at the bottom left of the Edge browser.
3. Click the download link (or click **Open**).
4. If prompted to accept the terms of service, click **Accept**.
5. Click **Install** (press **Yes** to accept if prompted).

Set the default browser

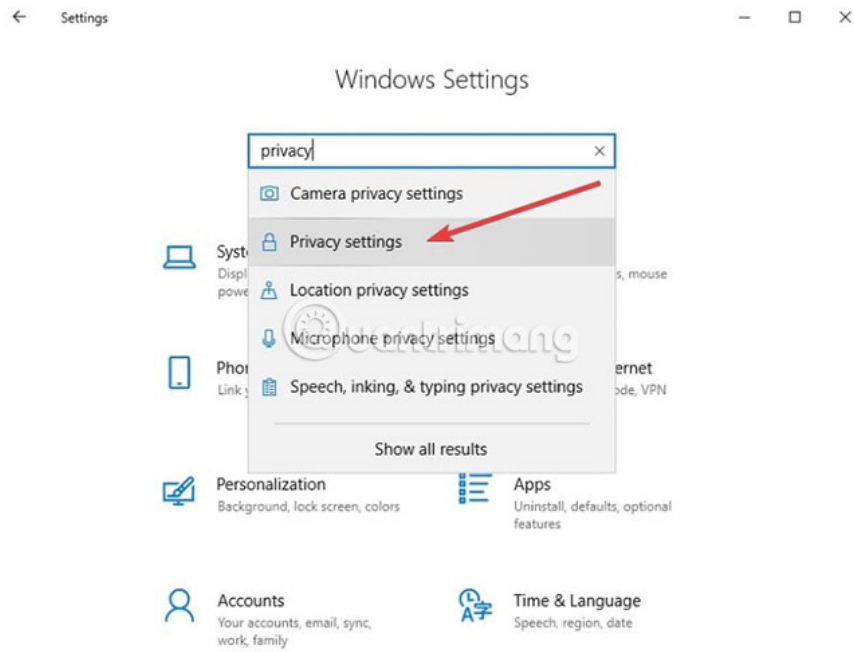
The default browser will open when a user clicks on a link in a web page, email or document. In Windows 10, the default browser is set to Microsoft Edge. To change the default browser, please refer to the article: 3 ways to change the default browser in Windows 10.



Disable application Edge Edge

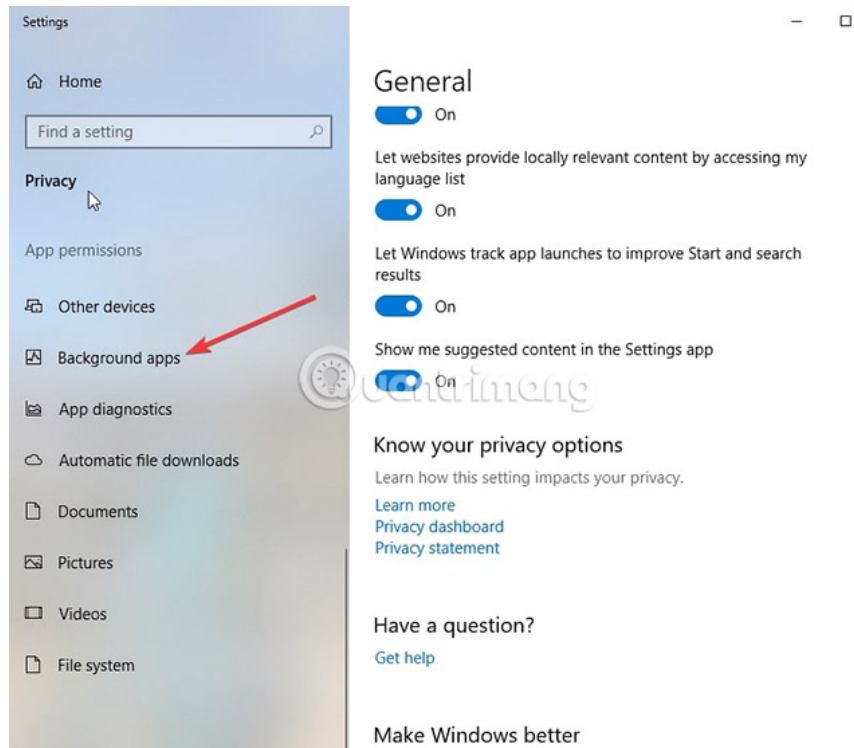
Users can disable the application or the Microsoft Edge implicit running process by following these steps:

1. Open **Settings**.
2. In the search box, enter '**Privacy**'.
3. Select '**Privacy Settings**' from the listed results.












4. On the left panel, scroll down to the '**App Permissions**' section.

5. Locate the '**Background apps**' section and click on it. (If it is not displayed in the **App Permissions** list, maximize the window).



6. On the right, find Microsoft Edge and disable it.

Background apps

	Get Help	<input checked="" type="checkbox"/>	On
	Groove Music	<input checked="" type="checkbox"/>	On
	Mail and Calendar	<input checked="" type="checkbox"/>	On
	Maps	<input checked="" type="checkbox"/>	On
	Messaging	<input checked="" type="checkbox"/>	On
	Microsoft Edge	<input checked="" type="checkbox"/>	On
	Microsoft News	<input checked="" type="checkbox"/>	On
	Microsoft Photos	<input checked="" type="checkbox"/>	On
	Microsoft Solitaire Collection	<input checked="" type="checkbox"/>	On
	Microsoft Store	<input checked="" type="checkbox"/>	On

7. Restart the computer.

Disable Edge by editing the Registry

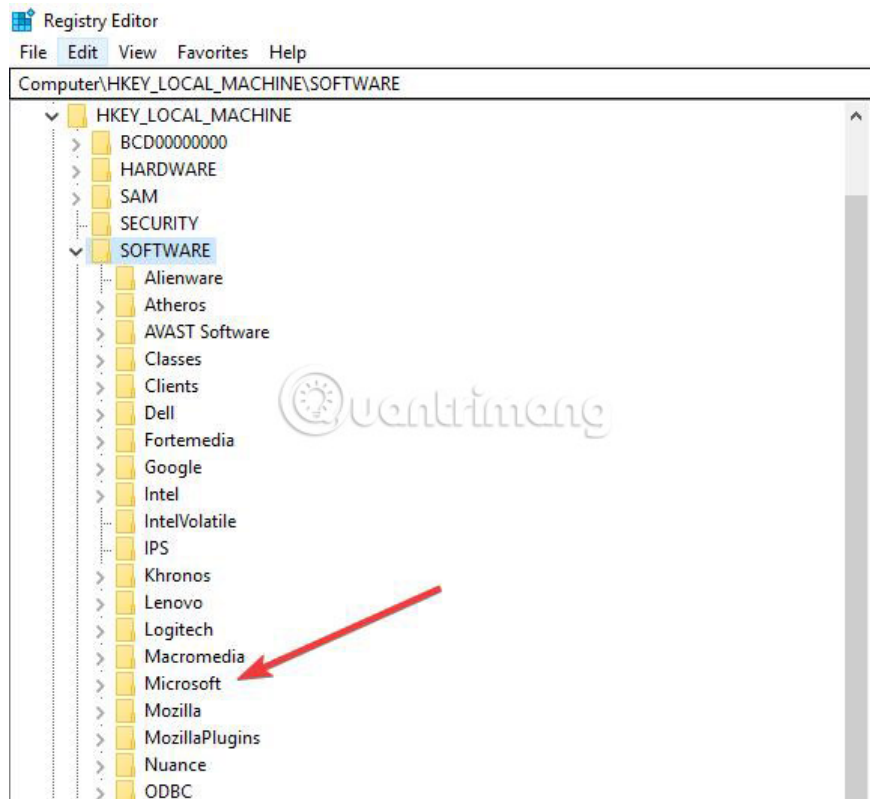
If you use the Home version of Windows, users can use Registry Editor to disable Edge. Pro or Enterprise versions are handled according to the method in the next section, but users can still use this method if they are comfortable.

If you've never worked with Registry Editor before, remember to back up the Registry and the computer before you start making changes.

To disable Edge by editing the Registry, users will have to make two edits: An edit that prevents the processes from starting automatically and a change that prevents the **Start** and **New Tab** tabs from loading first.

1. Prevent pre-launch processes in Microsoft Edge

1. Click the search button and enter **regedit**.
2. Press **Enter** to open the Registry Editor. (Allow Registry Editor to make changes, if prompted).
3. On the left side of Registry Editor, navigate to the **'HKEY_LOCAL_MACHINE\SOFTWARE\Policies\Microsoft\MicrosoftEdgeMain'** key .

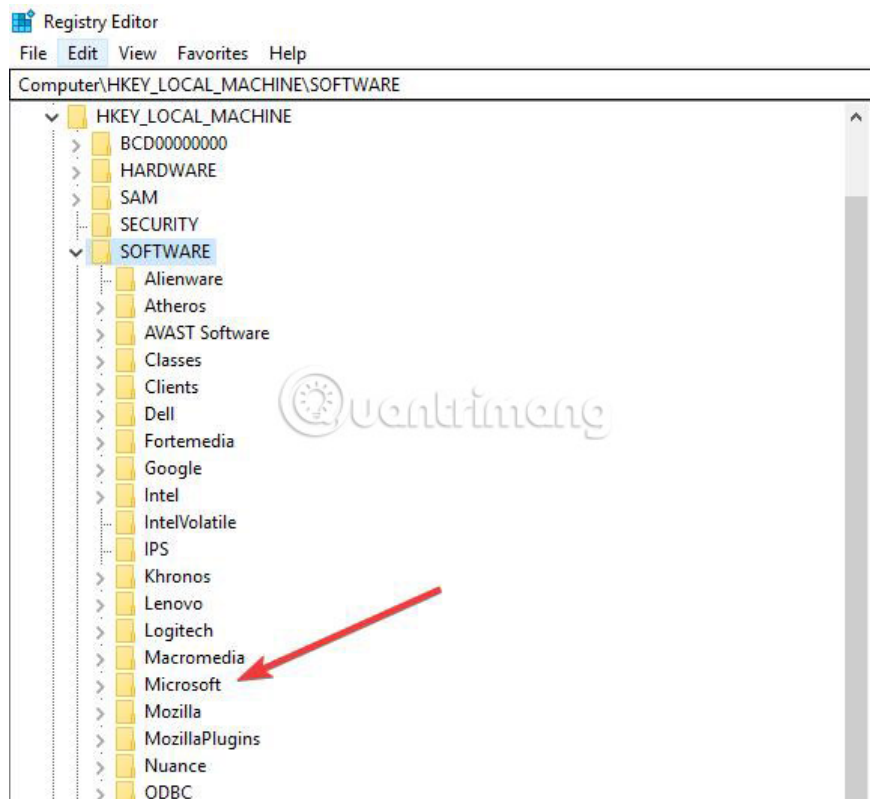


4. Right-click on the main key and select '**New> DWORD (32-bit) Value**' .
5. Name the value '**AllowPrelaunch**'.
6. Double-click the new **AllowPrelaunch** value.
7. In the **Value Data** box , set the value to **0** . and click **OK**. (This value can be changed back to the original by returning **AllowPrelaunch** and setting the value to **1**).

2. Prevent the Start and New Tab tabs from loading themselves first

Still in the Registry Editor:

1. On the left of the Registry Editor, navigate to the **HKEY_LOCAL_MACHINE\SOFTWARE\Policies\Microsoft\MicrosoftEdge** key .



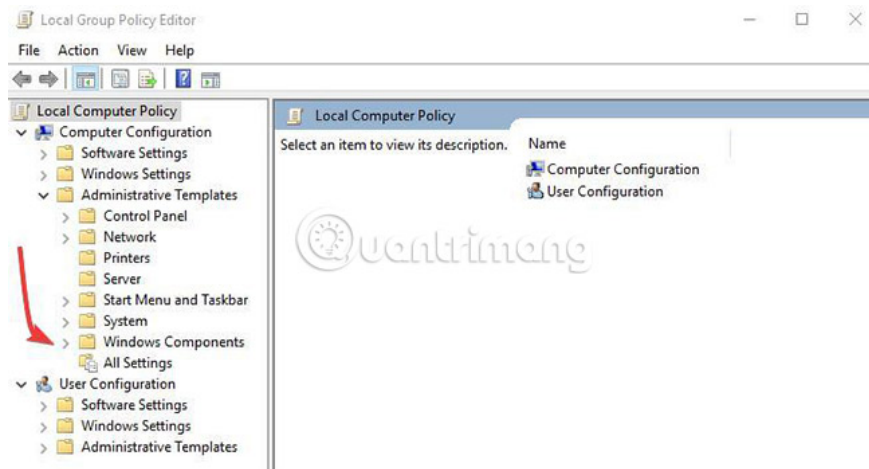
2. Right-click the **MicrosoftEdge** folder and select '**New> Key**' .
3. Name the new key '**TabPreloader**'.
4. Right-click the **TabPreloader** key .
5. Select '**New> DWORD (32-bit) value**' .
6. Name the new value '**AllowTabPreloading**'.
7. Double-click the new **AllowTabPreloading** value to modify it.
8. In the **Value Data** box , set the value to **0** .
9. Click **OK**. (Users can return **AllowTabPreloading** and set the value to **1** later.)
10. Exit Registry Editor and restart the computer to apply the changes.

Disable Edge using Local Group Policy Editor

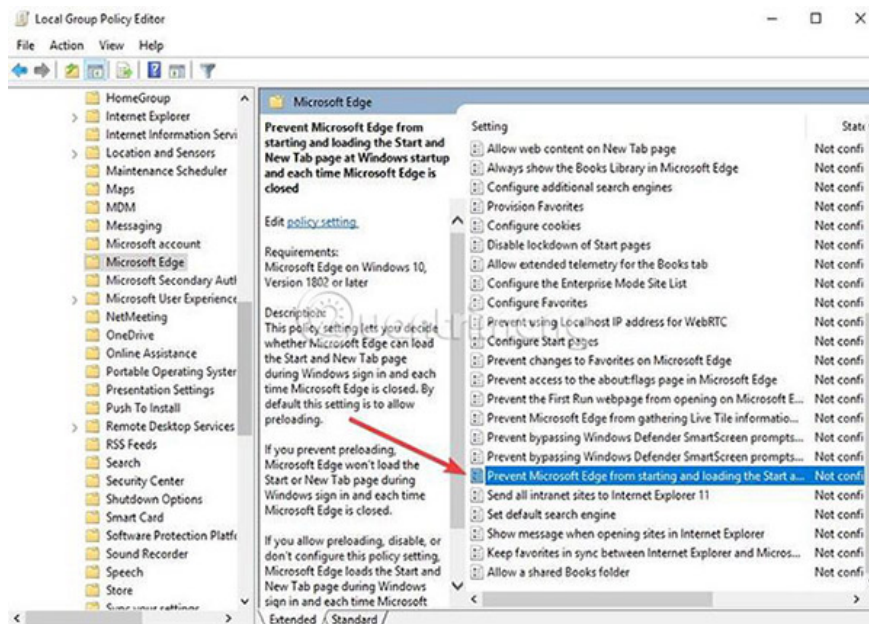
Users can disable Microsoft Edge with Group Policy settings. However, this editor is only available in Pro and Education versions of Windows 10.

1. Right-click the **Start** button and select **Run**.
2. Enter **gpedit.msc** and click **OK** or press **Enter** to open **Local Group Policy Editor** .

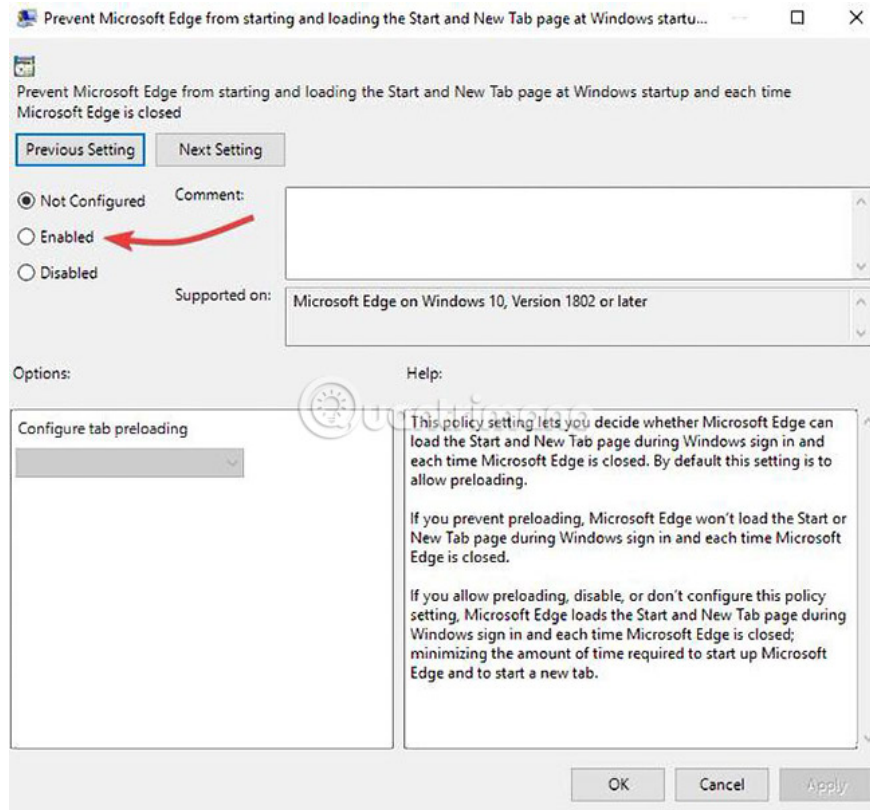
3. In the left panel, visit '**Computer Configuration Administrative Templates Windows Components Microsoft Edge**'.



4. In the Microsoft Edge right panel, double-click **Prevent Microsoft Edge from starting and loading the Start and New Tab page at Windows startup, and each time Microsoft Edge is closed** to edit the policy.



5. Click **Enable**.



6. Click **OK** and close **Group Policy Editor** .

Do the suggestions in the article prevent Microsoft Edge from running in the background? Share with us in the comment section below!

Hope you are succesful.

You finished reading the article "**How to block Microsoft Edge from running underground**" edited by the [TipsMake](#) team. We hope this article has provided you with many useful tech tips and tricks. You can search for similar articles on tips and guides. Thank you for reading and for following us regularly.