

How to batch resize photos in Photoshop

Resize – batch resizing photos is not a difficult task to do. Especially when you use the 'Image Processor' tool in Photoshop.

Resize – batch resizing photos is not a difficult task to do. Especially when you use the 'Image Processor' tool in Photoshop. Please scroll down to the content of the article below to see how to do it.

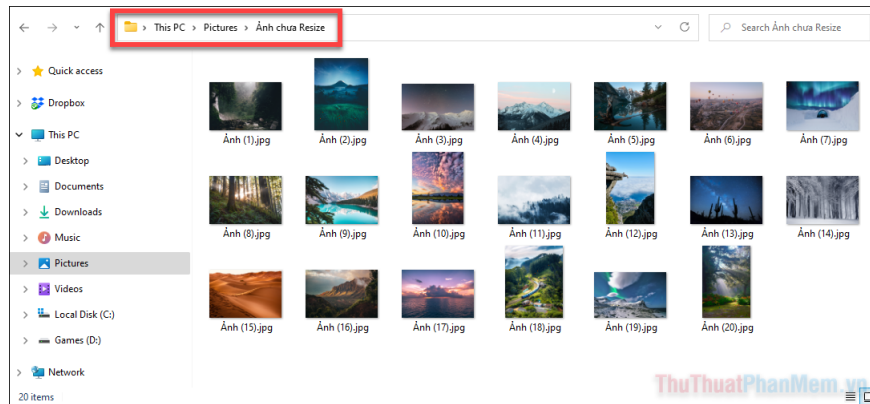


Batch resize photos in Photoshop

In this article, TipsMake will guide you in using the 'Image Processor' tool to batch resize images. This feature can be applied to many photos with different horizontal and vertical orientations, without requiring an 'action'. Sounds great, right?

Step 1: Prepare your files

First, prepare all the images you want to resize in the same folder.

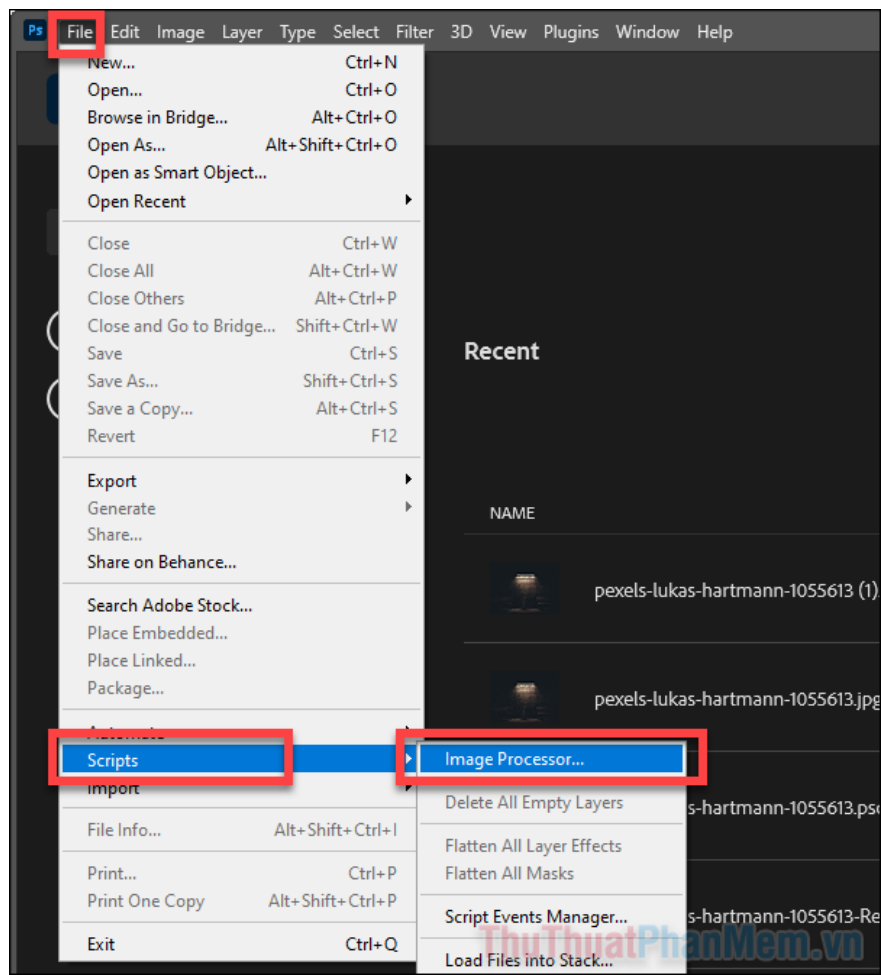


Continue to create a second folder - which serves as the output for resized images. On a Mac, in the Finder application, select **File >> New >> Folder** to create a new folder. For Windows Explorer, you create a new folder using the **Control + Shift + N** combination .



Step 2: Start Image Processor.

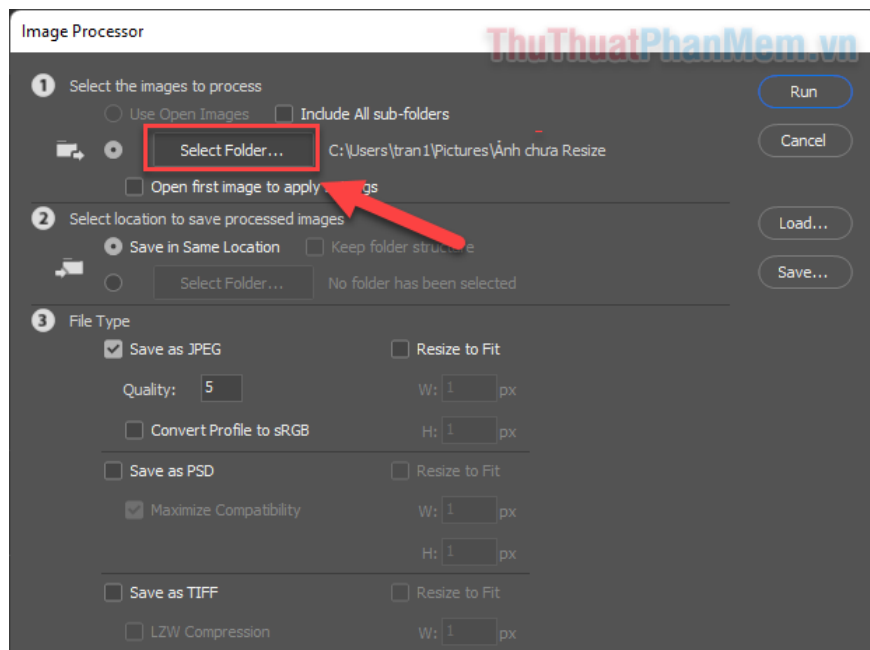
Open Photoshop, right from the main page of the software, select **File >> Scripts >> Image Processor...**



Step 3: Select folder

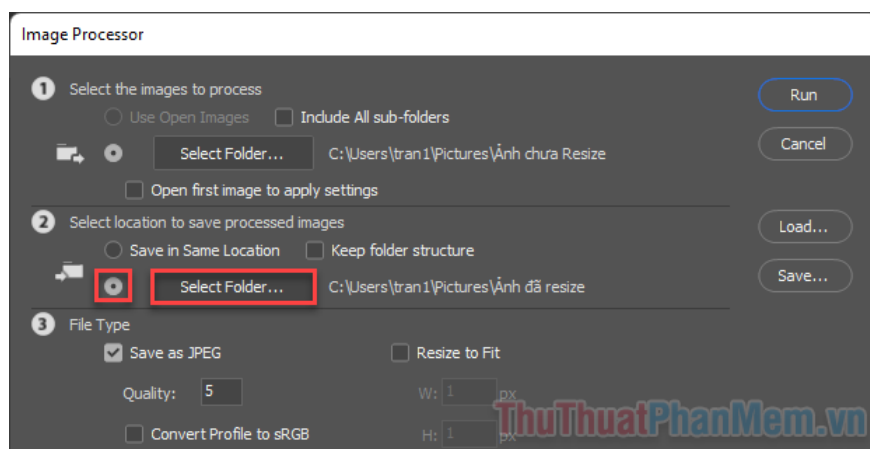
In part 1 of Image Processor, use the **Select Folder...** button to select the folder where you saved all your images.

Note : If your photo folder has subfolders, select **Include All sub-folders** .



Step 4: Choose a folder to save the file after resizing

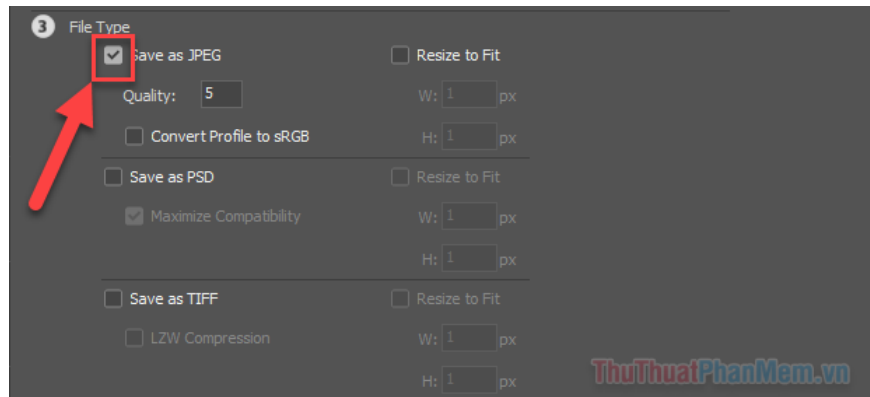
In part 2, click **Select Folder.** to select the newly created empty folder to save the resized images.



Additionally, if you select **Save in the Same Location**, the new images will overwrite the original images after resizing. So please consider this option.

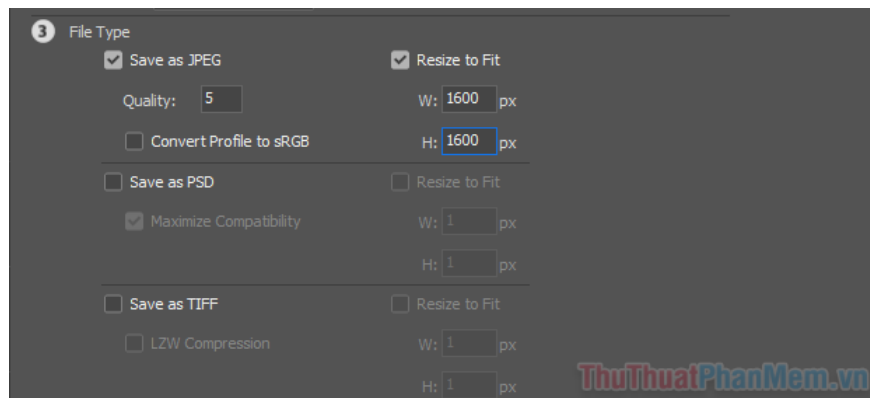
Step 5: Choose file type

In section 3, select the file type to which you want to export the photo (JPEG is the most common). Please check the box in front of the file type of your choice: JPEG, PSD or TIFF.



Step 6: Set size parameters

Select **Resize to fit** . Then you enter new dimensions for all images with the **W (width)** and **H (height)** boxes . The unit of calculation is Pixel.



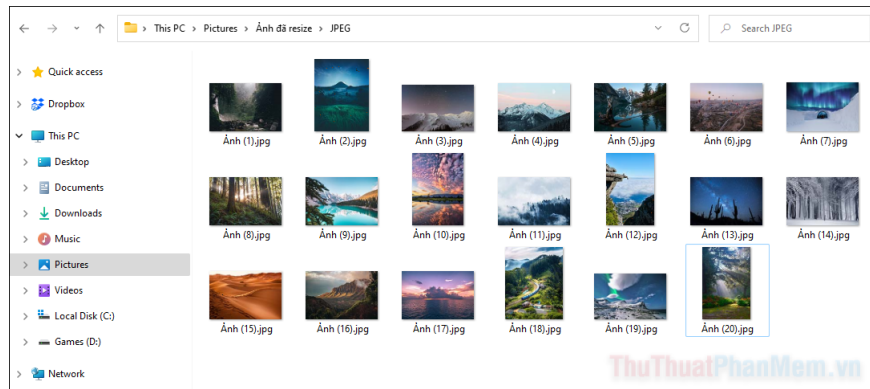
You must fill in both the width and height boxes. But don't worry because the software will preserve the original aspect ratio. That means it will resize the image based on the longest edge of the image.

For example, if you want to size all images to 1600 pixels, set 1600 pixels in both the width and height boxes. Then, the longest side of each image will be 1600 pixels. The shorter side will be adjusted automatically to maintain the same aspect ratio.

Additionally, in the **Quality** section , you can also enter the number 10 to maintain the image quality.

Step 7: Run batch resize in Photoshop

When you're ready for Photoshop to resize the image, just click Run. The process will start with each image in turn.



If you have a large number of images, this process will take some time. You will find the full number of processed images in the export folder.

Conclude

The Image Processor feature in Photoshop helps you process large numbers of images quickly. So, please take advantage of this feature often. Remember that you can also use this feature to convert images from one file type to another, for example RAW to JPEG.

You finished reading the article "**How to batch resize photos in Photoshop**" edited by the [TipsMake](#) team. We hope this article has provided you with many useful tech tips and tricks. You can search for similar articles on tips and guides. Thank you for reading and for following us regularly.