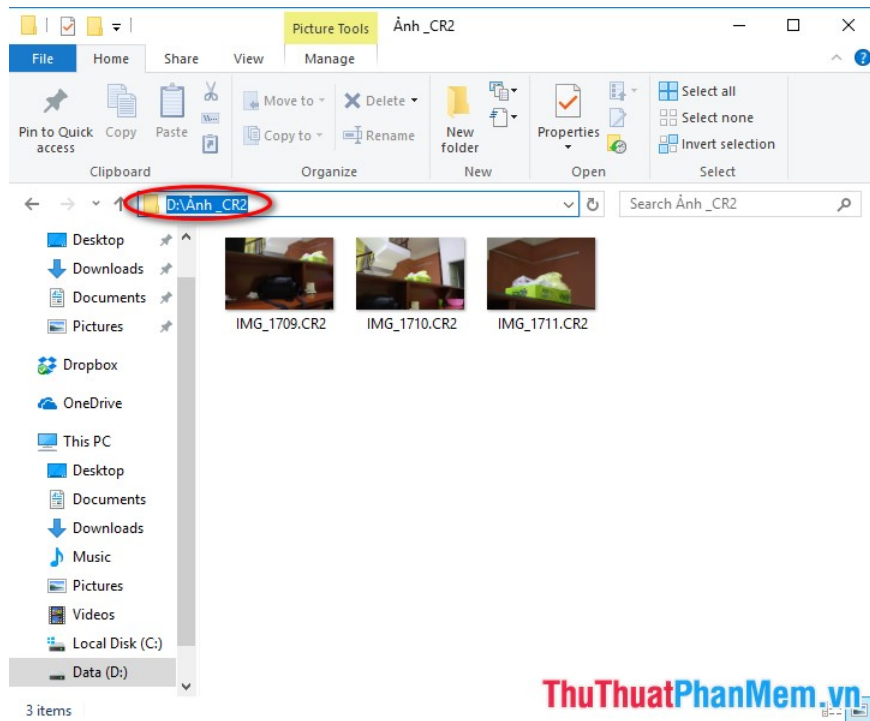


How to batch convert CR2 files to JPG extremely fast using Photoshop

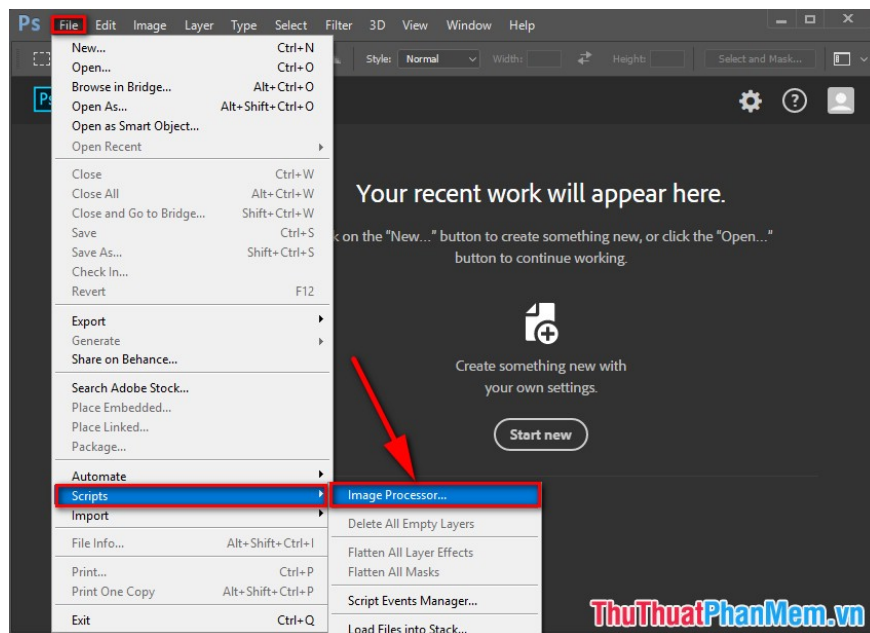
If you have 100 CR2 files that need to be converted to JPG at a time, how to do it quickly. This article I will guide you how to batch convert CR2 files to JPG extremely fast in Photoshop.

In the previous articles I showed you how to convert CR2 files to JPG online or in Photoshop, but if you have 100 rows of 1000 files to transfer at a time, how to quickly. This article I will guide you **how to batch convert CR2 files to JPG extremely fast in Photoshop** .

For example, there are some images in **.CR2** format in the **D** folder : **_CR2 photos** need to be converted to **.JPG** format

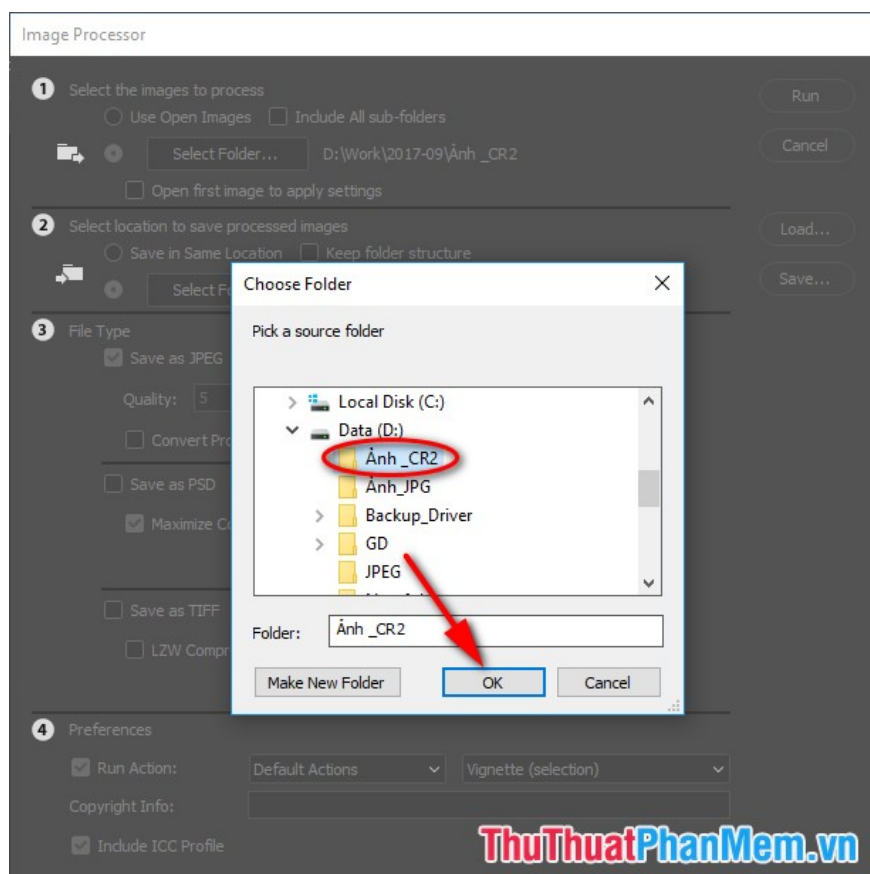


Step 1: Open the **Photoshop** software -> **File** -> **Scripts** -> **ImageProcessor:**



Step 2: The **Image Processor** window appears:

- In section **1. Select the images to process**, click **Select Folder** to select the folder containing the .CR2 format files to be converted to .JPG format. The **Choose Folder** window appears, selecting the path to the folder containing the files to be converted. For example here in folder **D: Photo _CR2** -> click **OK**:



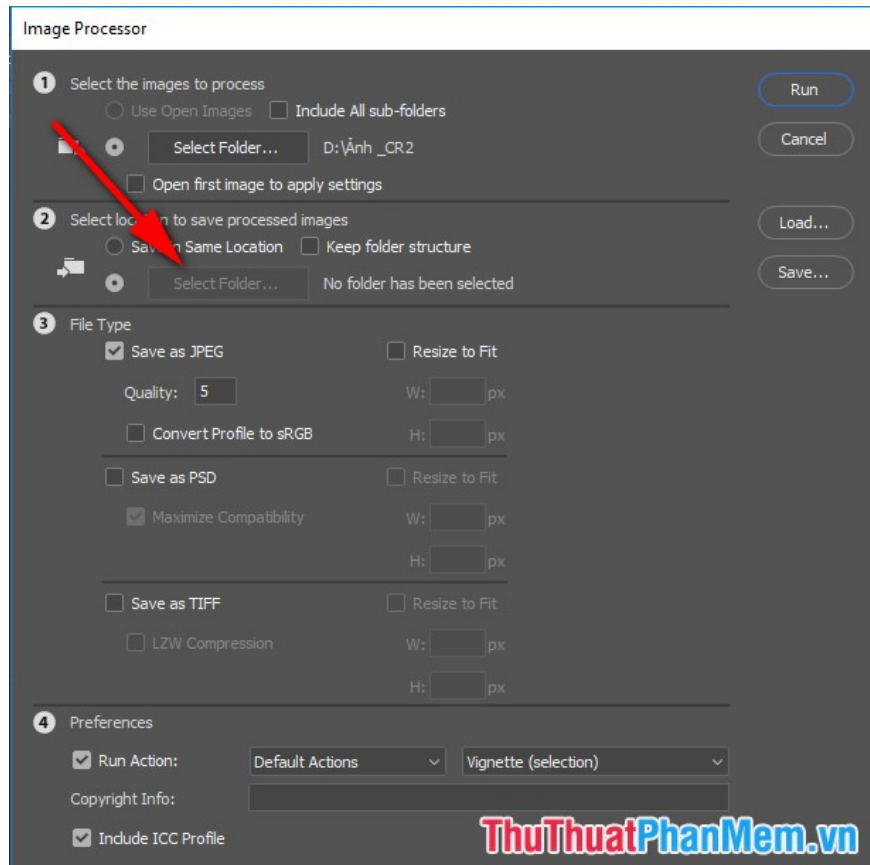
- In section 2 **Select location to save processed image** : Select a location to save the JPG file

This place has 2 options:

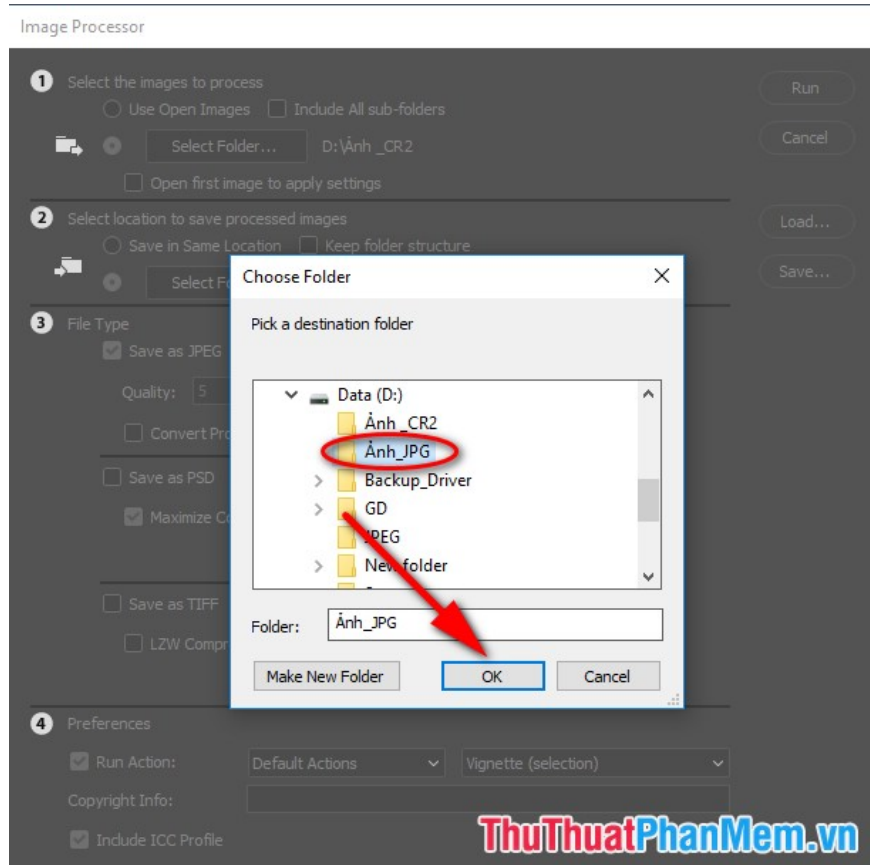
Option 1: Save in Save Location -> Save the JPG file right at the location of the CR2 file

Option 2: Select Folder -> Select a folder to save the JPG file elsewhere

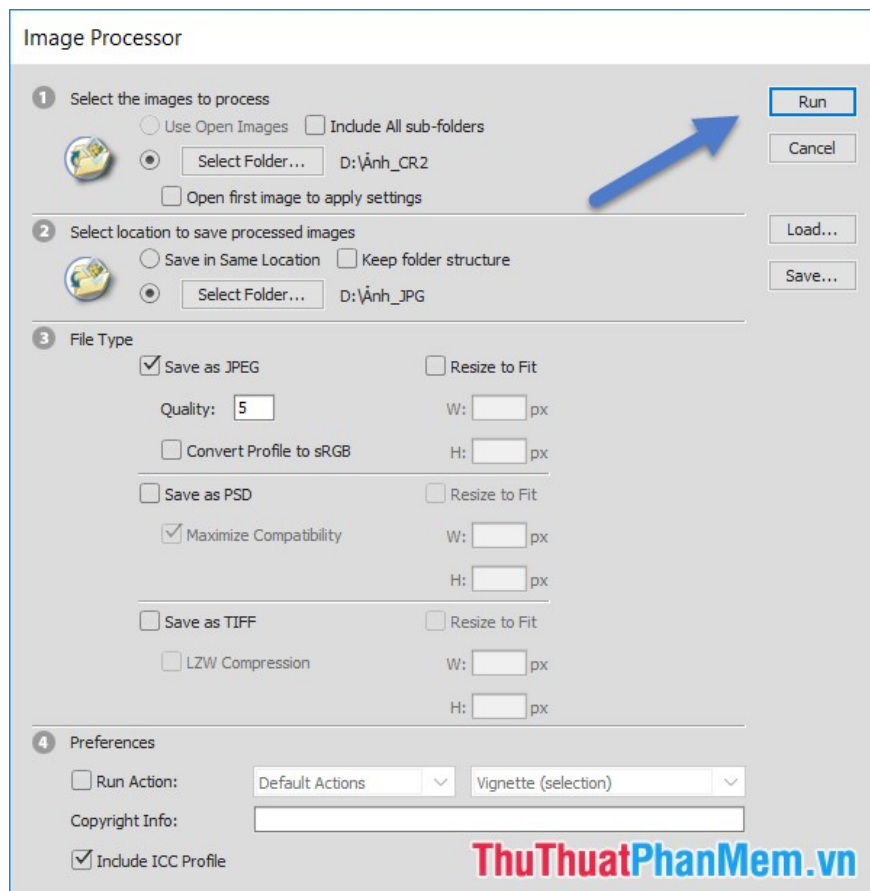
In this example, I will choose to save the JPG file elsewhere so I click on **Select Folder**



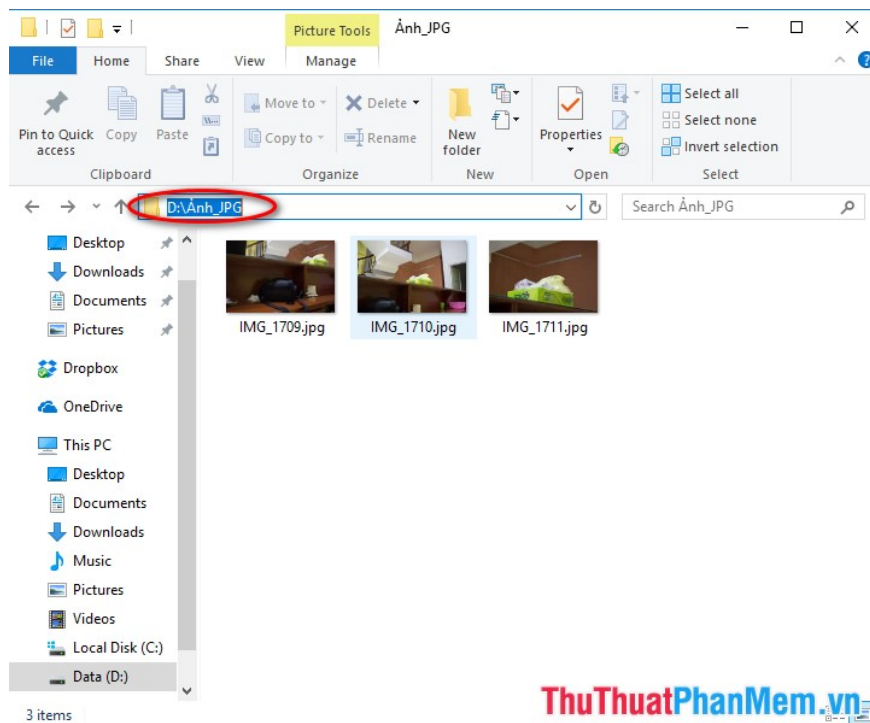
- The **Choose Folder** window appears, select a folder to save the JPG image file after conversion, for example, here choose a folder in D: Photos_JPG:



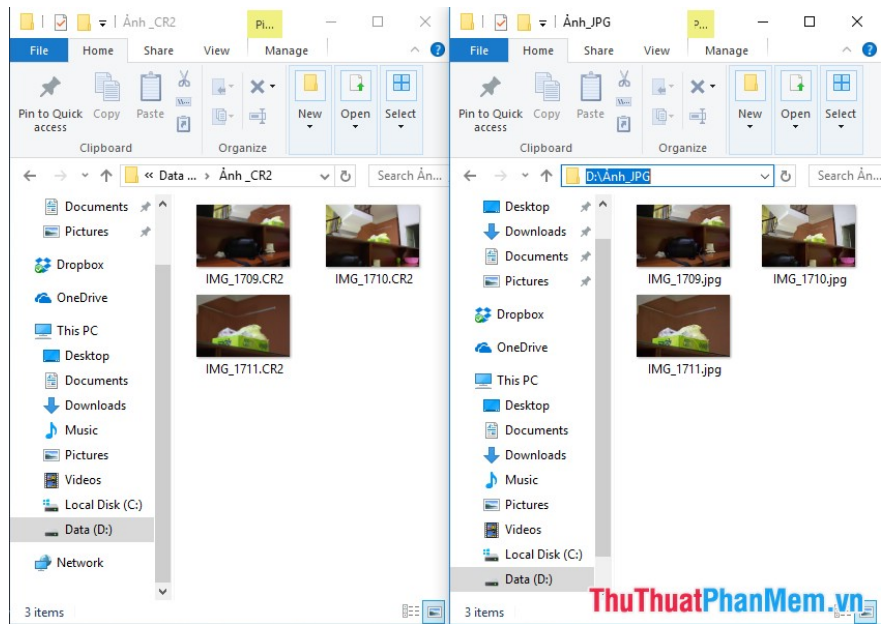
Step 3: Finally, click **Run** to convert:



- After clicking **Run**, a series of CR2 image files are converted into **JPG** format in the selected destination folder:



- You can directly compare 2 folders containing image files before and after conversion:



The above is a detailed guide on how to batch convert **CR2** files to **JPG** extremely fast in **Photoshop**. Good luck!

You finished reading the article "**How to batch convert CR2 files to JPG extremely fast using Photoshop**" edited by the [TipsMake](#) team. We hope this article has provided you with many useful tech tips and tricks. You can search for similar articles on tips and guides. Thank you for reading and for following us regularly.