

How to back up and restore drivers in Windows 10, backup and restore drivers in Windows 10

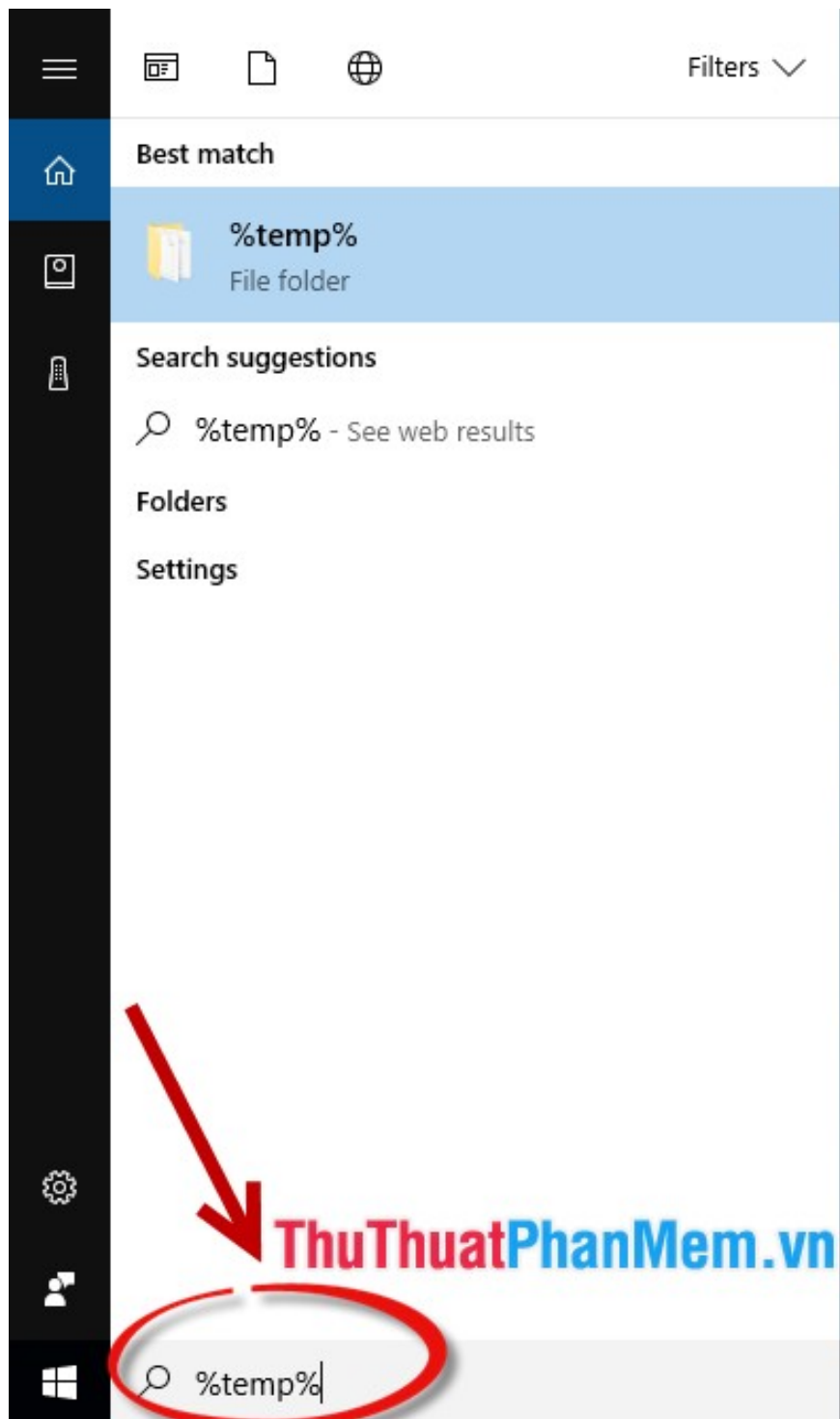
Back up the Driver version to facilitate the installation process. The following article details how to backup and restore drivers in Windows 10, backup and restore drivers in Windows 10

After reinstalling the computer, you usually have to reinstall the **Driver** for it to work. Usually each machine will have the **Driver** stored in 1 drive and every time you want to use you have to use that disc. So why do not you back up the **Driver** version to facilitate the installation process. The following article details **how to backup and restore drivers in Windows 10, backup and restore drivers in Windows 10**

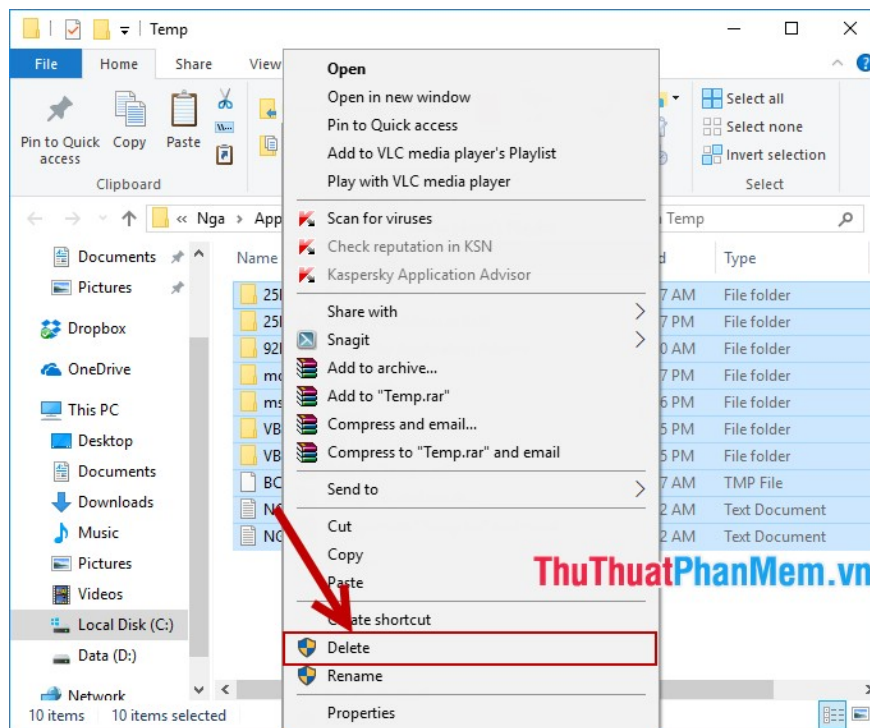
1. Clean up your computer before backing up.

Before performing **backup driver** you need to remove the entire file system clutter avoid **Backup** all junk files:

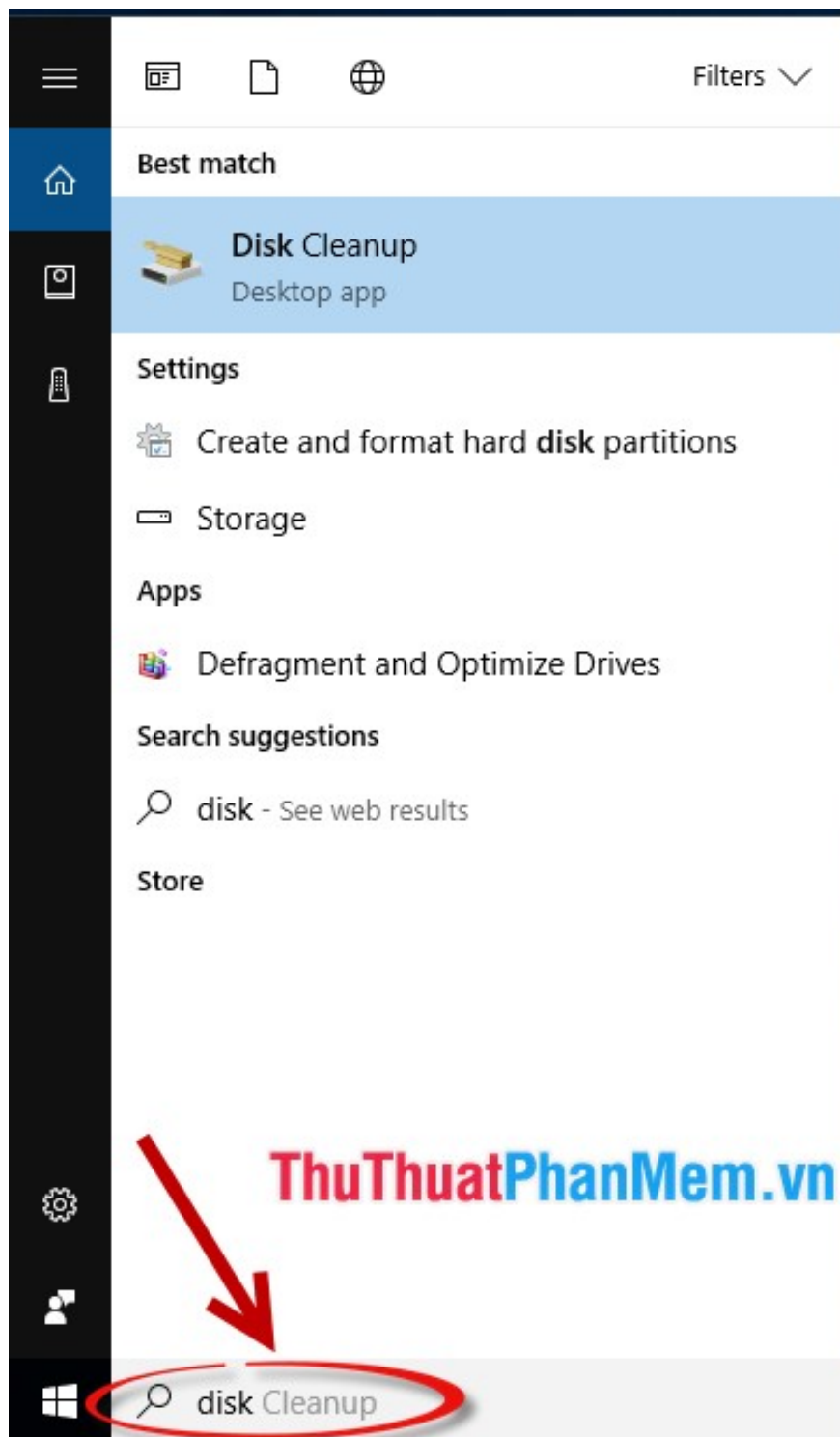
- Enter the keyword **% temp% and** proceed to clean up the junk files in the system:



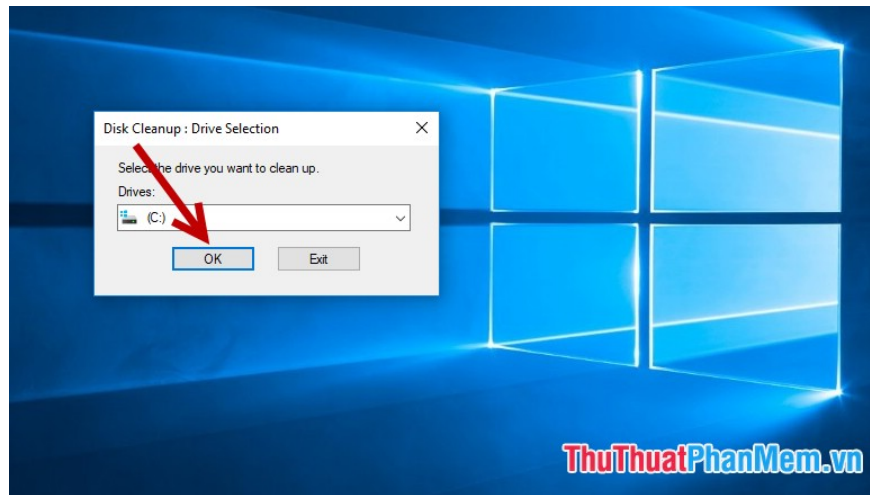
- Select the entire junk file by pressing **Ctrl + A** -> right-click and select **Delete** or press **Shift + Delete** to delete all junk files.



- Enter the keyword **Disk CleanUp** to clean junk files in the drive of the operating system installation:



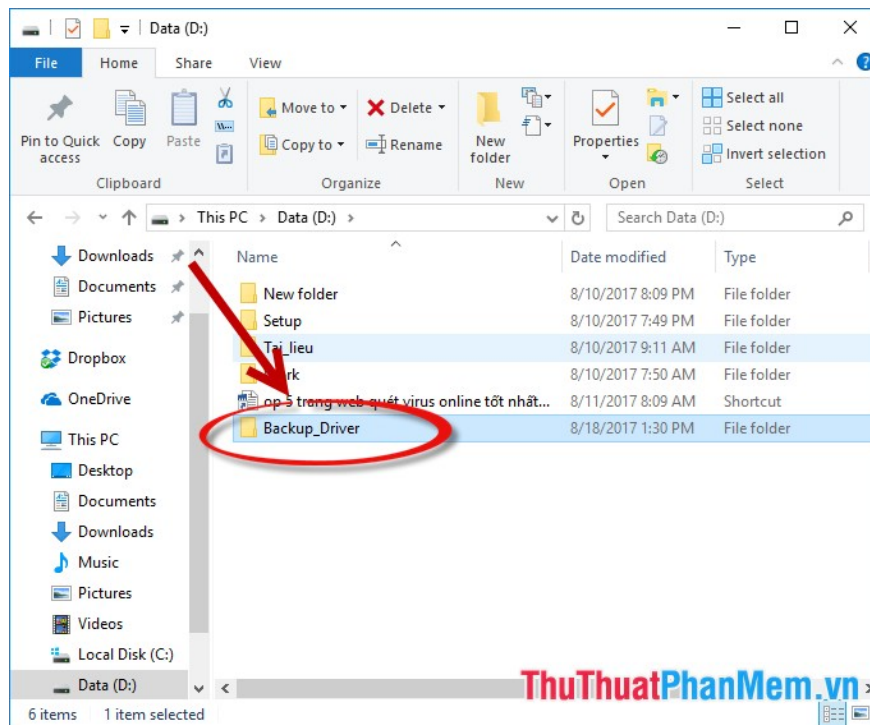
- Select the drive to install Win, for example here choose drive C -> **OK:**



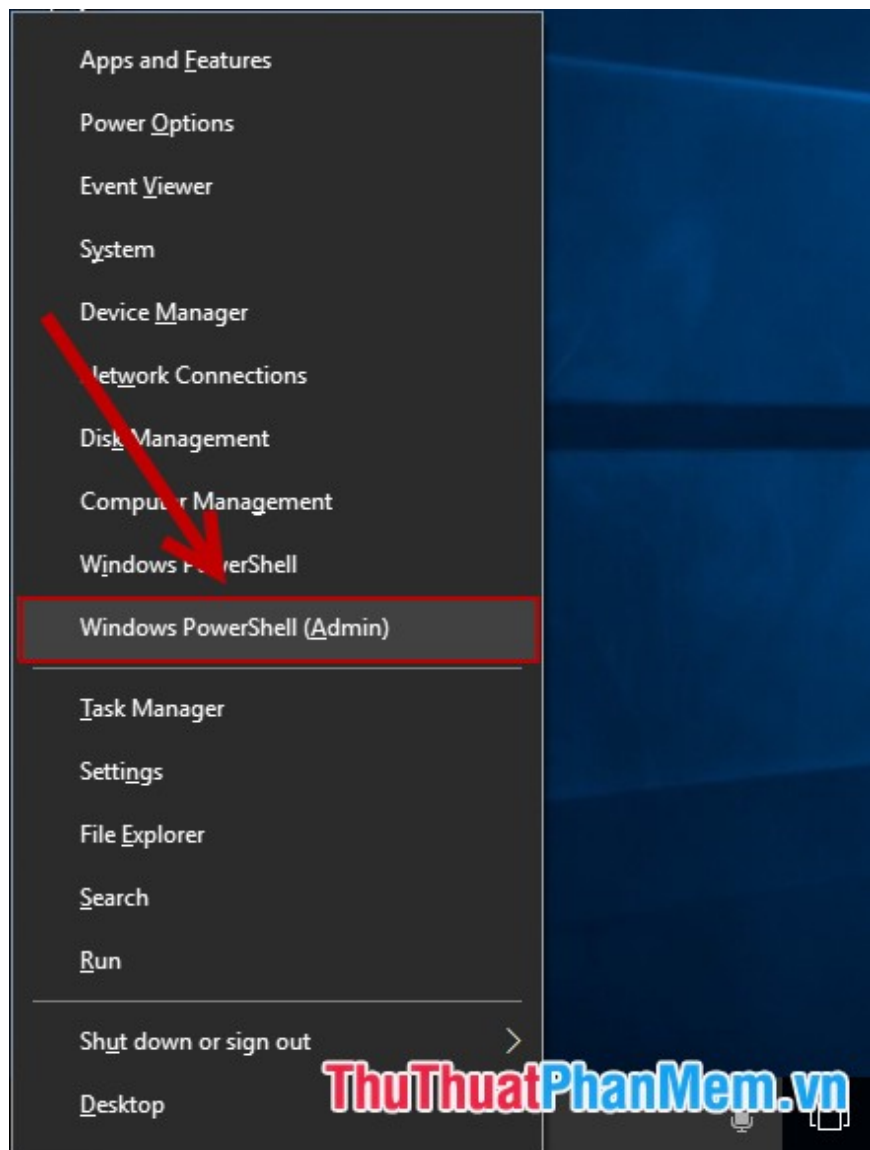
So you have finished cleaning your computer. Now you just need to backup all **Driver** data .

2. Backup and restore Driver in Windows 10

Step 1: Create a folder in the drive to store the **Backup Driver**, usually create a folder outside the C drive to avoid risks, for example here create a **Backup_Driver** folder in drive **D:**:



Step 2: Press the key combination **Windows + X** -> the window appears selecting **Windows PowerShell (Admin)** (some computers choose **Comand prompt (Admin)**) to access cmd with **Admin** rights :



Step 3: The interface window displays the command: **dism / online / export-driver / destination: D: Backup_Driver -> press Enter:**

```
Administrator: Windows PowerShell
Windows PowerShell
Copyright (C) 2016 Microsoft Corporation. All rights reserved.

PS C:\Windows\system32> dism /online /export-driver /destination:D:\Backup_Driver
```

ThuThuatPhanMem.vn

- The backup process successfully displays the message stream

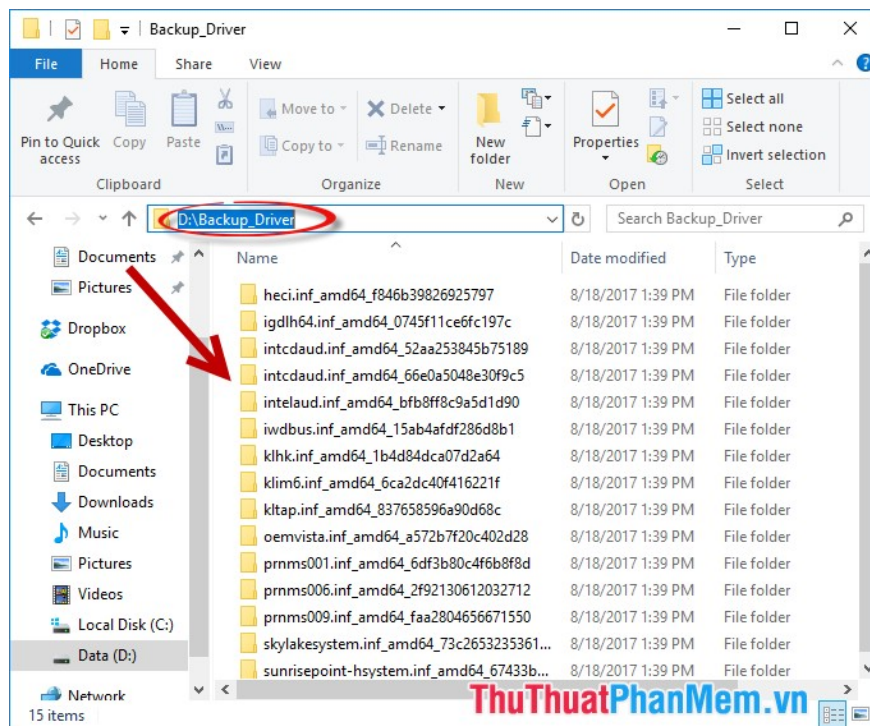
The operation Completed Successfully:

```
Administrator: Windows PowerShell
Windows PowerShell
Copyright (C) 2016 Microsoft Corporation. All rights reserved.

PS C:\Windows\system32> dism /online /export-driver /destination:D:\Backup_Driver
Deployment Image Servicing and Management tool
Version: 10.0.15063.0
Image Version: 10.0.15063.0
Exporting 1 of 15 - oem0.inf: The driver package successfully exported.
Exporting 2 of 15 - oem1.inf: The driver package successfully exported.
Exporting 3 of 15 - oem10.inf: The driver package successfully exported.
Exporting 4 of 15 - oem11.inf: The driver package successfully exported.
Exporting 5 of 15 - oem12.inf: The driver package successfully exported.
Exporting 6 of 15 - oem13.inf: The driver package successfully exported.
Exporting 7 of 15 - oem14.inf: The driver package successfully exported.
Exporting 8 of 15 - oem2.inf: The driver package successfully exported.
Exporting 9 of 15 - oem3.inf: The driver package successfully exported.
Exporting 10 of 15 - oem4.inf: The driver package successfully exported.
Exporting 11 of 15 - oem5.inf: The driver package successfully exported.
Exporting 12 of 15 - oem6.inf: The driver package successfully exported.
Exporting 13 of 15 - oem7.inf: The driver package successfully exported.
Exporting 14 of 15 - oem8.inf: The driver package successfully exported.
Exporting 15 of 15 - oem9.inf: The driver package successfully exported.
The operation completed successfully.
PS C:\Windows\system32>
```

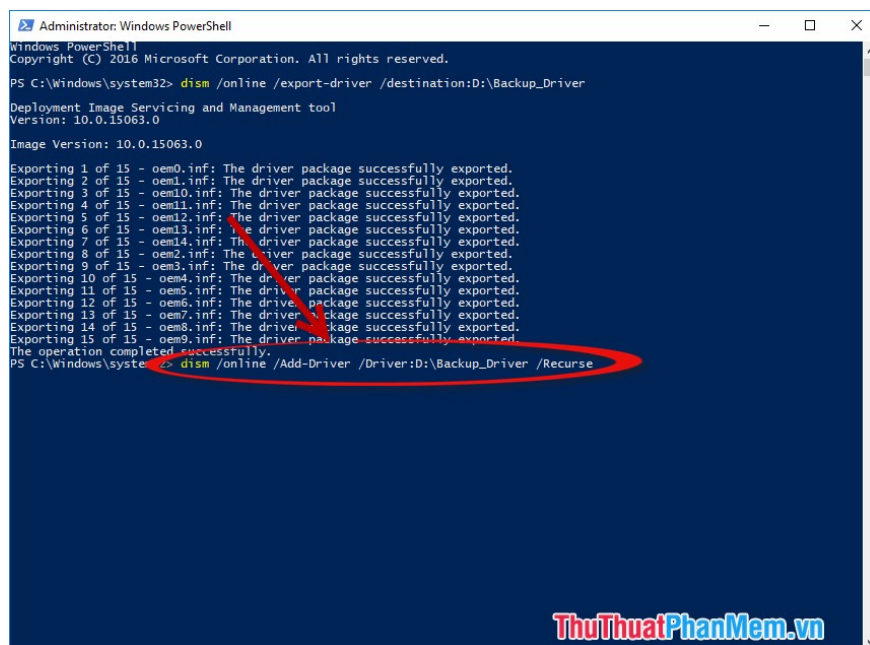
ThuThuatPhanMem.vn

- Open the **Backup_Driver** folder of **Driver** data that has been backed up:



- So using the **cmd** command you can quickly create **backup** files of **Driver**.

- In case, after reinstalling the computer, you need to install the **Driver** for the computer without much effort, you only need to access **cmd** with admin rights (similar to creating **Backup** file) to enter the command line: **dism /online / Add-Driver / Driver: D: Backup_Driver / Recurse -> press Enter to automatically update the Driver for your computer without using the disc:**



You finished reading the article "**How to back up and restore drivers in Windows 10, backup and restore drivers in Windows 10**" edited by the [TipsMake](#) team. We hope this article has provided you with many useful tech tips and tricks. You can search for similar articles on tips and guides. Thank you for reading and for following us regularly.

