

# How to automatically switch dark backgrounds on Windows 10

On Windows 10 systems, the dark background interface has been integrated and will apply to all UPW applications. Besides, users can set to automatically switch to black background on Windows 10.

No feature Night Light reduces the light intensity as on Windows 10 Creators Update version, but the Windows 10 operating system also has a dark background in addition to the default light on the system. When activating this interface, the dark background will be applied to all UPW applications on the system. And if you want this black background interface to automatically activate over time that users set up, you can use the Task Scheduler tool available on your computer. This is a tool that will help users schedule automatically, such as automatic software startup, scheduled Windows 10 shutdown automatically.

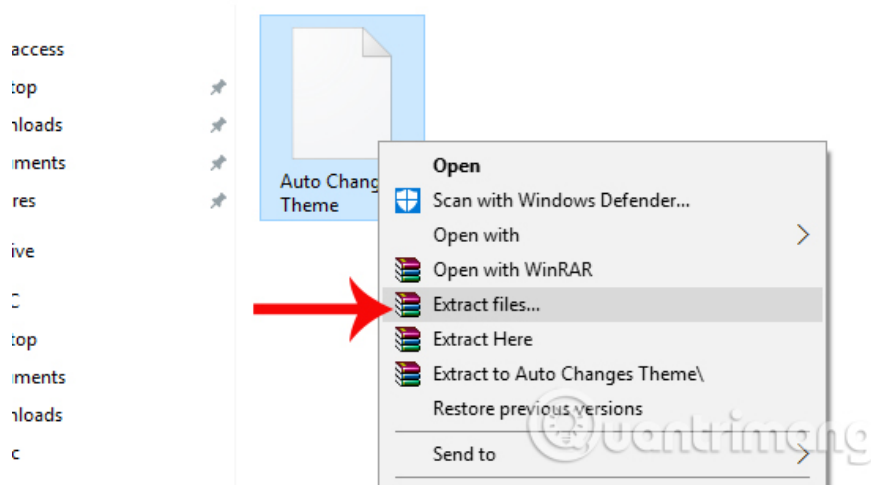
In the following article, we will show you how to set up your computer to automatically switch to dark background by setting time with Task Scheduler.

1. Activate Dark Theme on Windows 10 Anniversary Update
2. Don't miss out on useful tools available on Windows 10!
3. 7 ways to do, customize in post will help your Windows 10 "as fast as wind"

## Step 1:

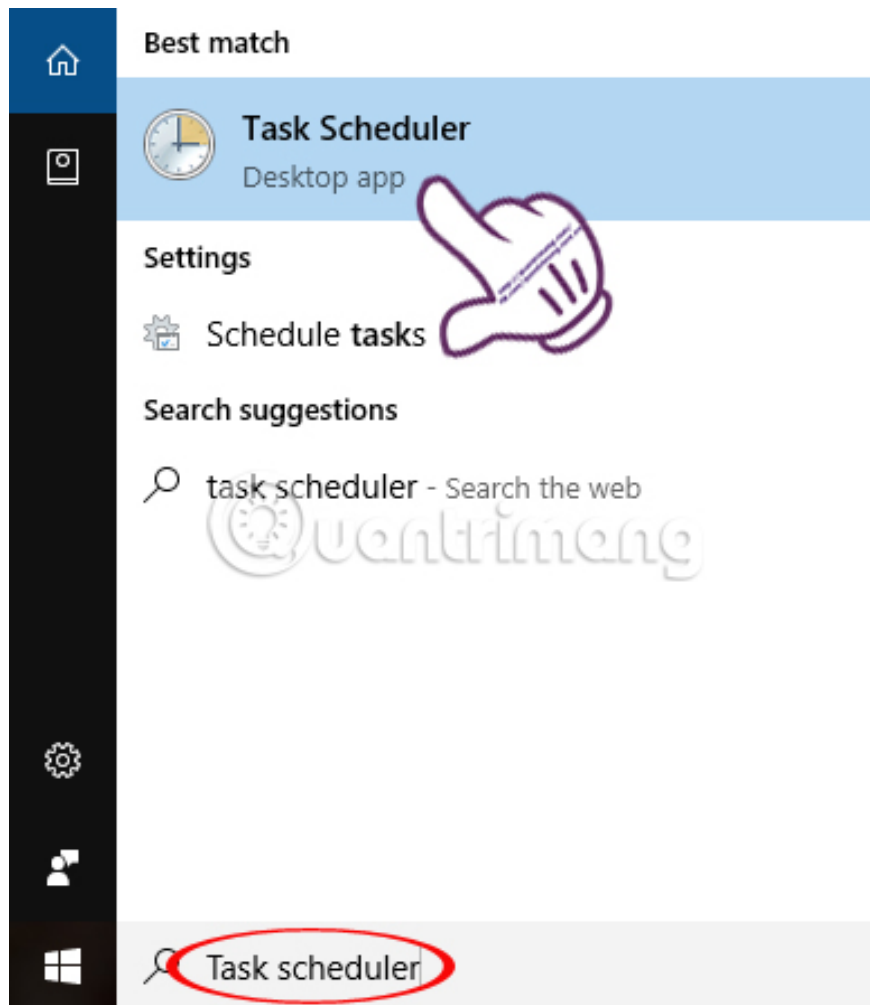
First of all, we need to download the interface file on Windows 10 according to the link below. You then proceed to extract the file.

1. Download the interface on Windows 10



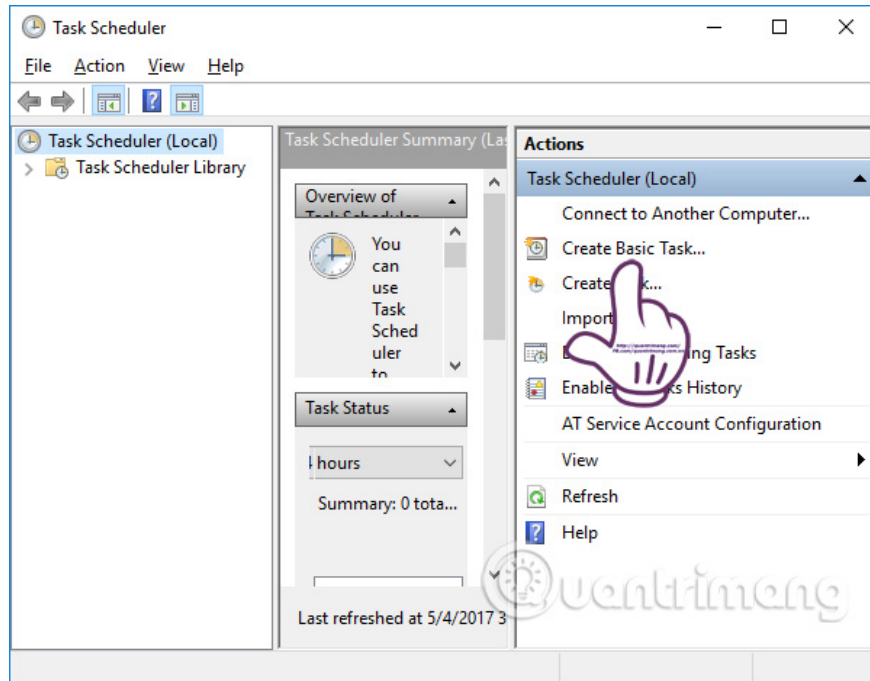
## Step 2:

Next, type the **Task Scheduler** keyword into Cortana and then click on the search result.



### Step 3:

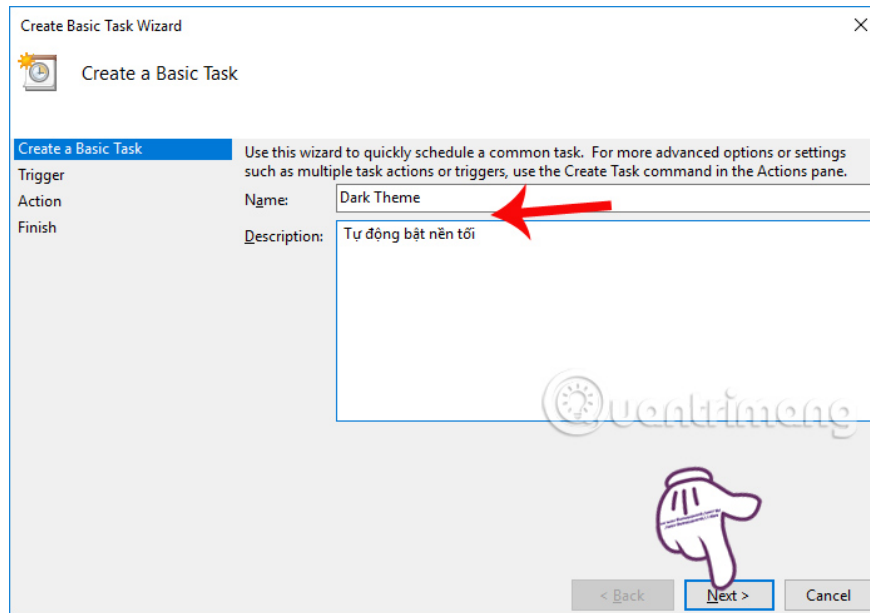
Task Scheduler interface appears. Here the user will click on the **Create Basic Task option** .



### Step 4:

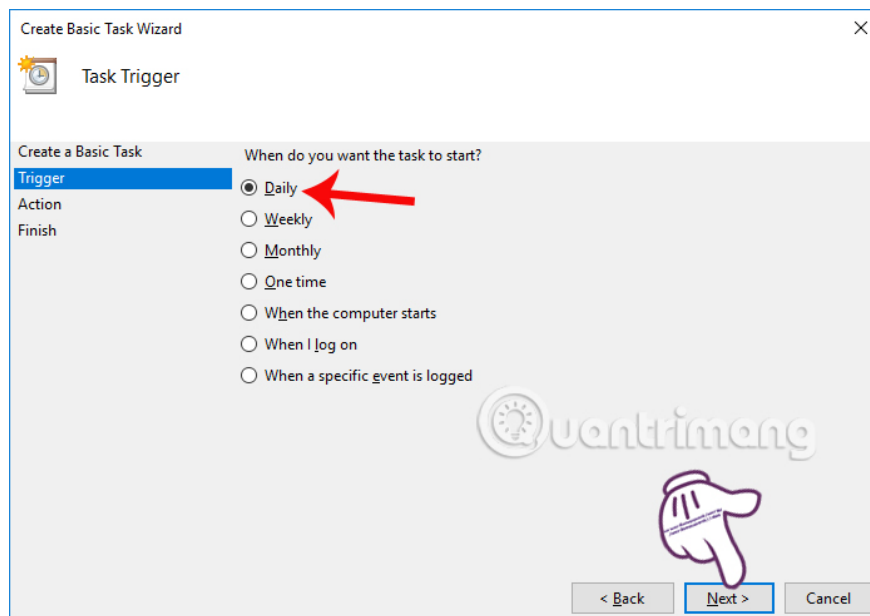
The setup window appears on Task Scheduler. We will proceed to set the system to automatically switch to dark background over time.

In the Create Basic Task section, the user will fill in **Dark Theme** in the **Name** box. Below **Description** enter some information for this option. Next click **Next** .

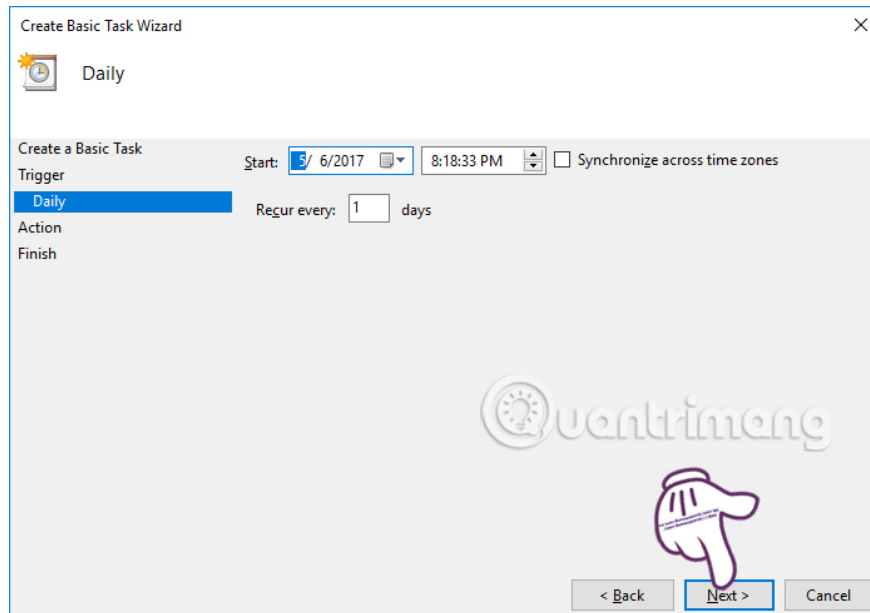


## Step 5:

Go to the Trigger section, we will set the time to start the dark background automatically. Click on the **Daily** option and click **Next**.

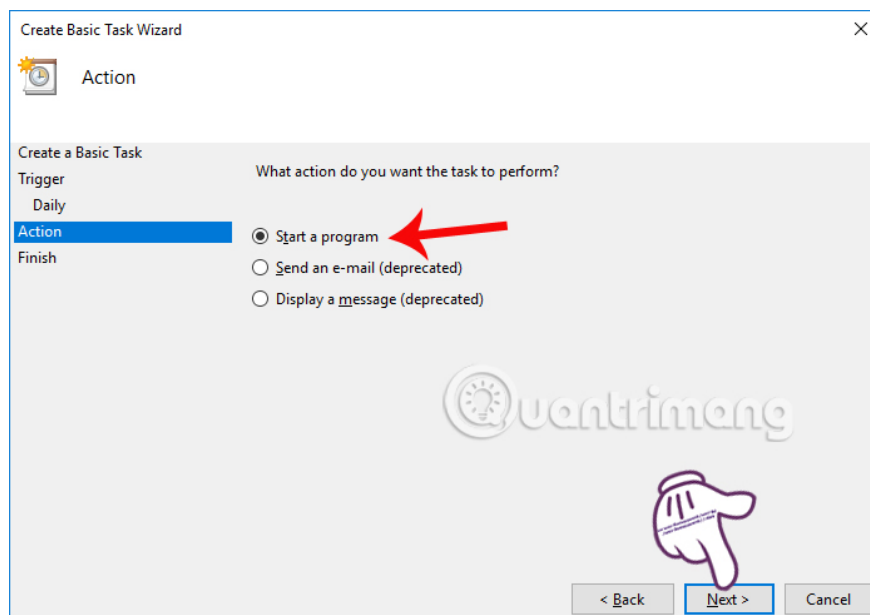


You continue to select specific time periods for each day, so that the dark background is automatically activated. We can enter the time option into the Start frame and then click **Next**.

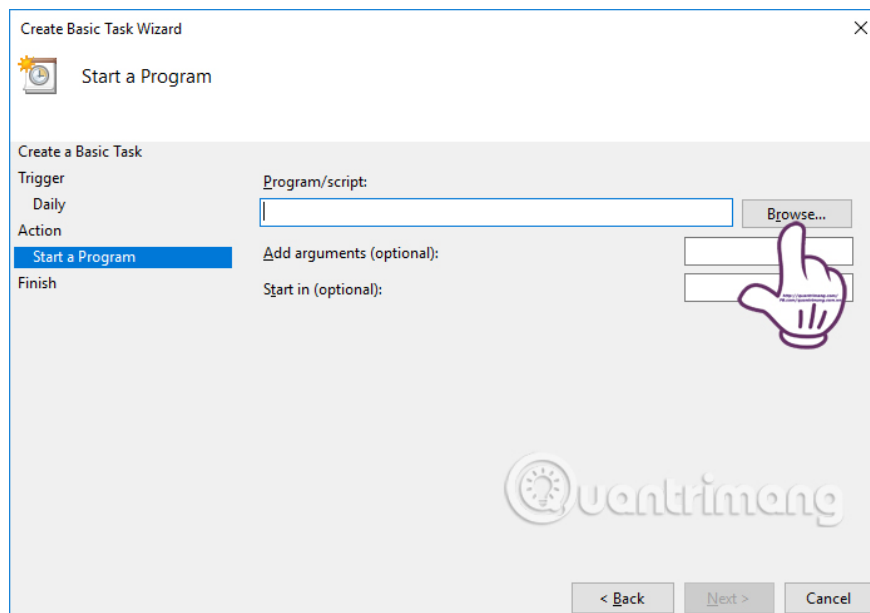


## Step 6:

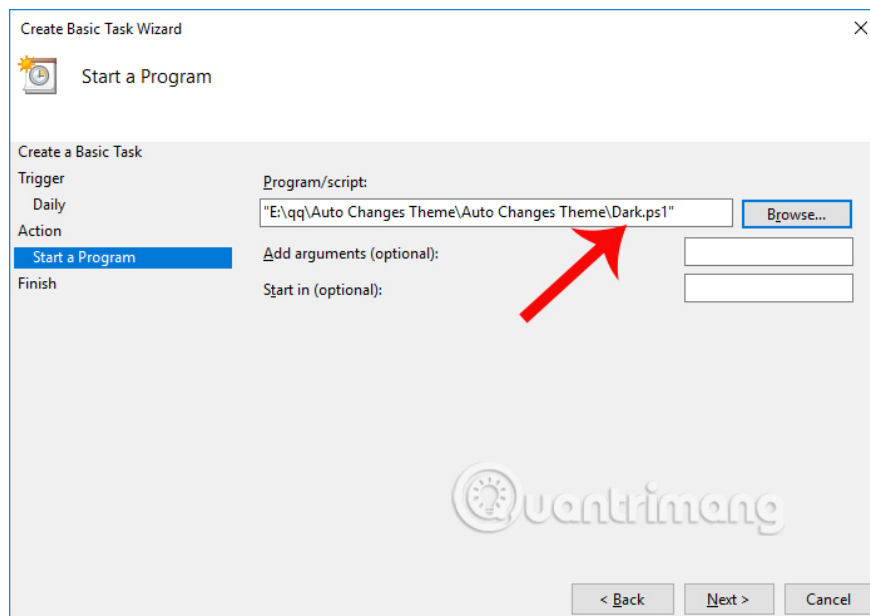
In the Action section, check the **Start a program option** and click **Next**.



Switch to Start a program interface, click on **Browse** to open the folder to save the interface file that we unzipped in Step 1.



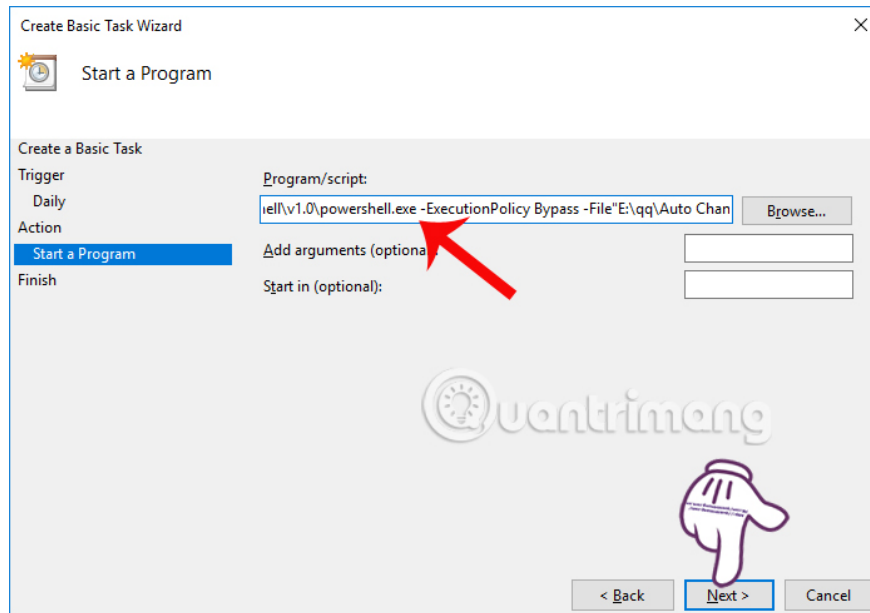
Here we will choose the **Dark.ps1** file.



## Step 7

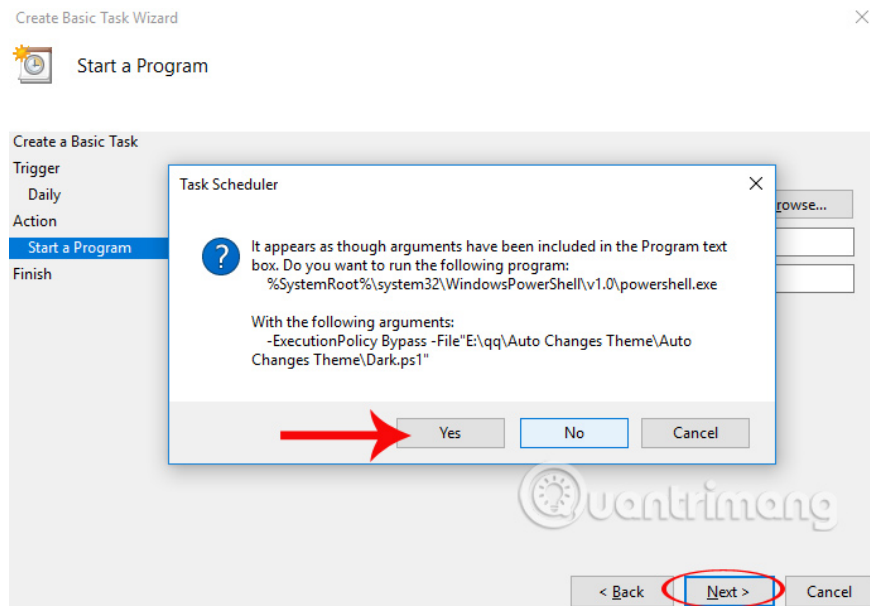
Also at this interface, users will add the following **path before the directory path of the Dark.ps1** file, then click **Next** to proceed to the next step.

```
% SystemRoot% system32WindowsPowerShellv1.0powershell.exe -ExecutionPolicy Bypass -File
```

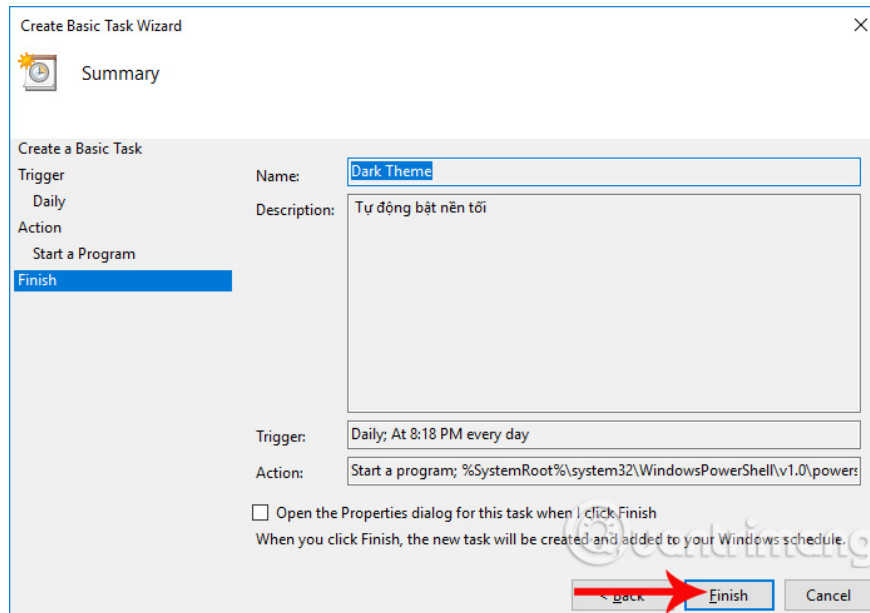


## Step 8:

A warning dialog box appears, click **Yes** to proceed .



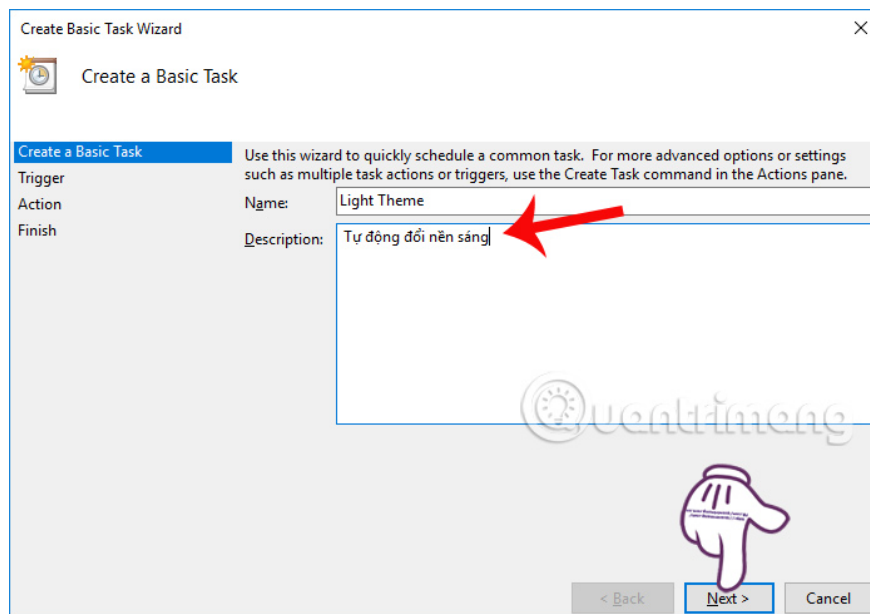
The interface is complete with the settings we have scheduled. You need to check if all options are correct. Finally click **Finish** to save. If you want to change any item, press Back to return.



## Step 9:

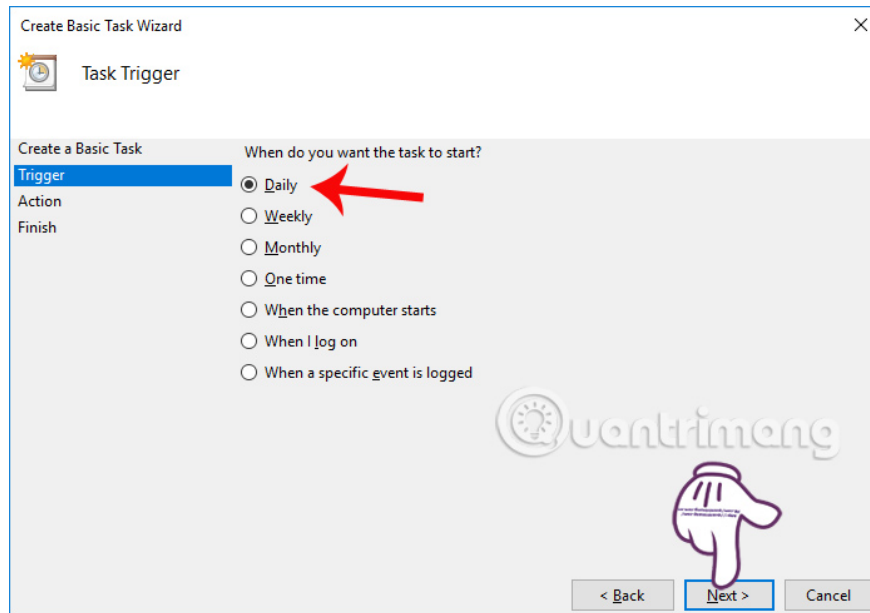
You continue with the light background interface, automatically switching over the set time.

At the Task Scheduler interface, click on Create Basic Task. Then in the next interface, the **Name** will enter the **Light Theme** and also add information in the **Description** section. Click **Next** to continue.

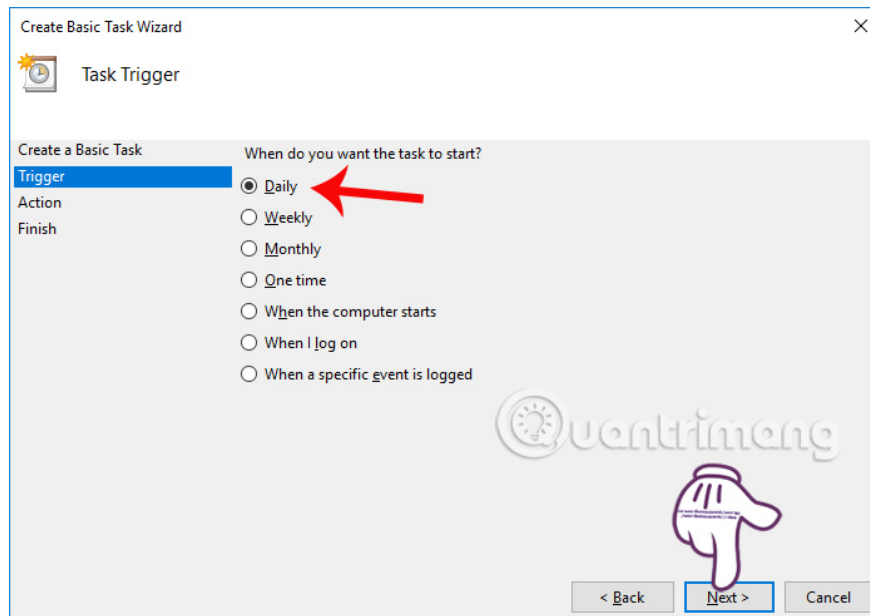


## Step 10:

The time to choose our time also **allows Daily** to change day by day.

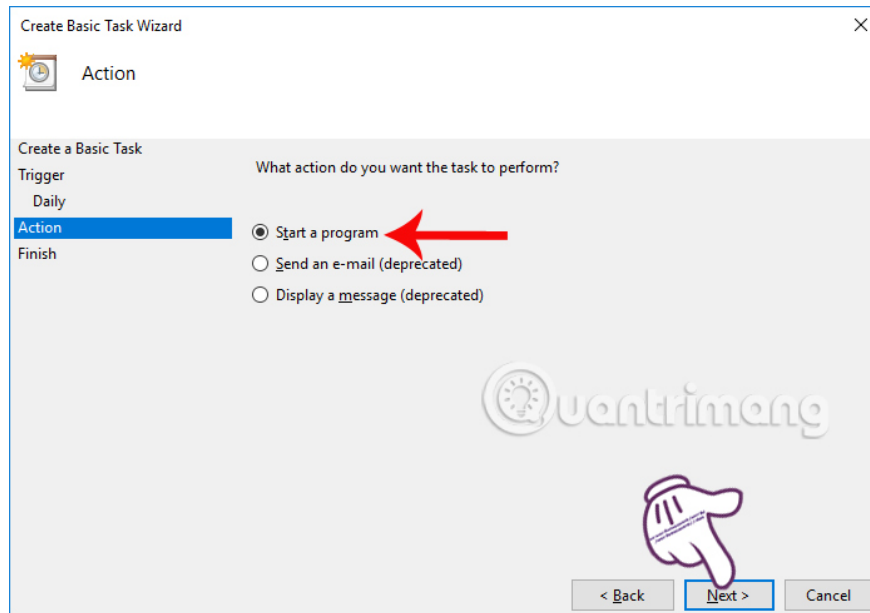


Next to the specific time selection, you can select the time frames for the day and click **Next** .



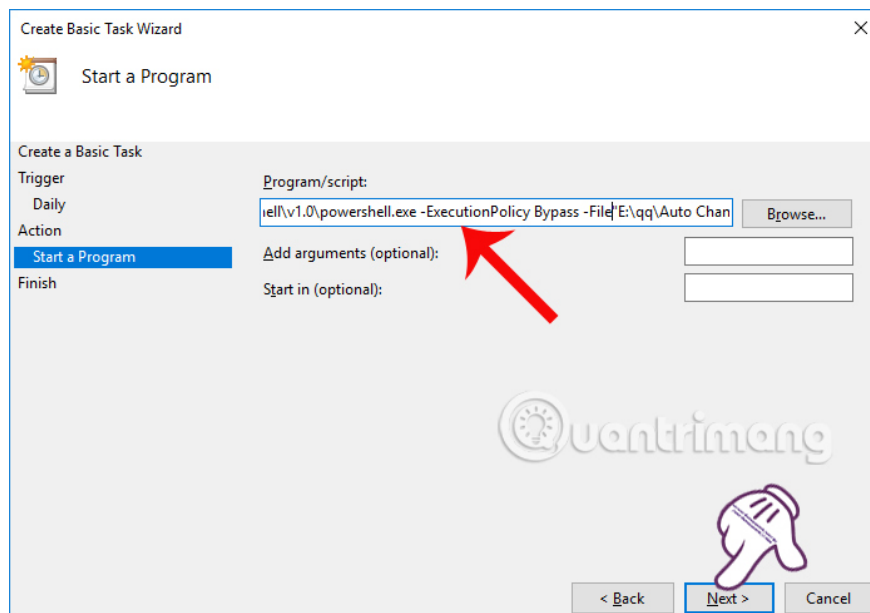
## Step 11:

Click **Start a program** to activate the switch to a light background.



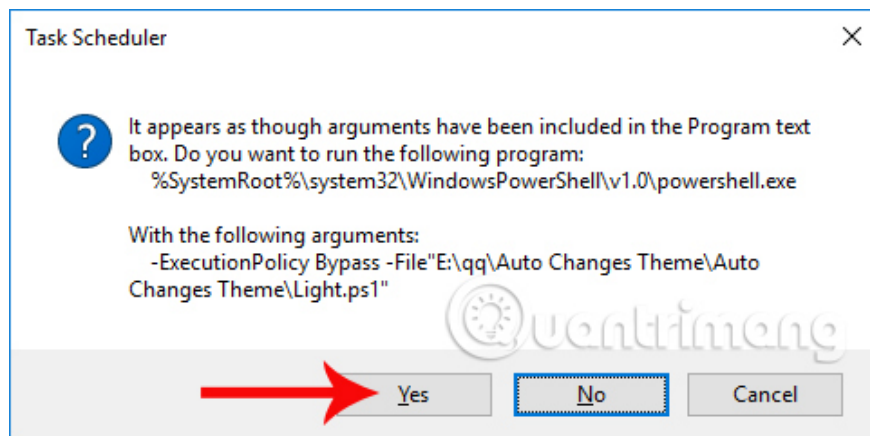
Next, click the **Browse** button and select the **Light.ps1** file stored on your computer. Enter the same command line before the file path of the file `Light.ps1`.

```
% SystemRoot% system32WindowsPowerShellv1.0powershell.exe -ExecutionPolicy Bypass -File
```

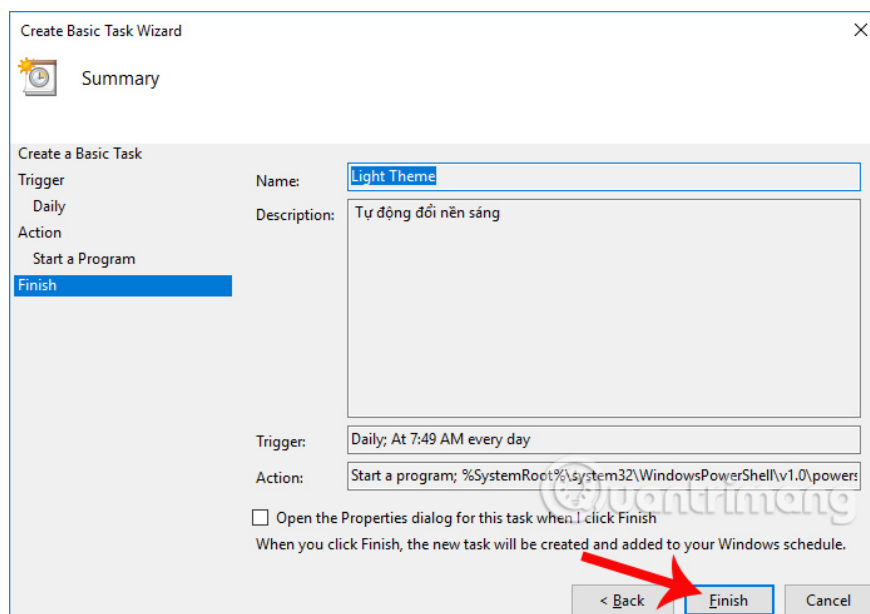


## Step 12:

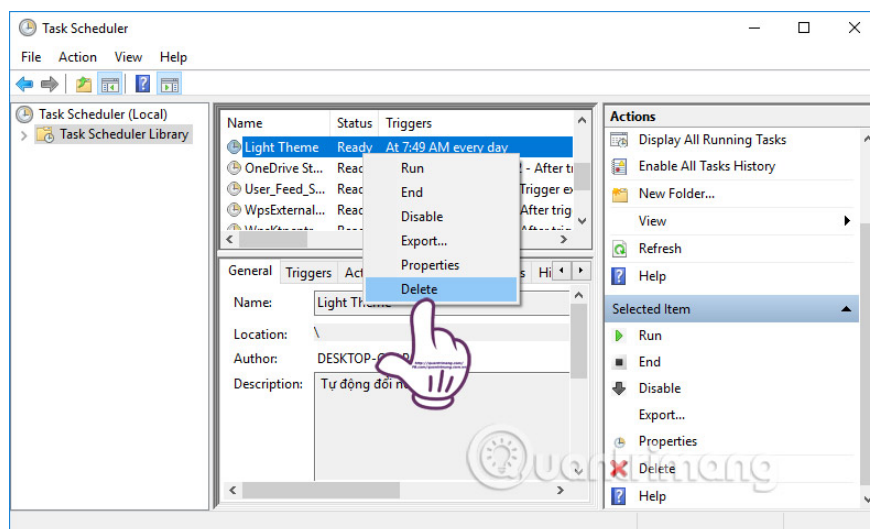
You will then see a message like the one below, click **Yes** to agree.



Finally, check the settings in the Task Scheduler, so that the system automatically activates the interface switch to a light background. Finish, click **Finish** to complete all operations.



So you have completed the setup so that the system automatically switches to dark background, or light background. In case you want to delete this command, right click on the command and select **Delete** as shown below. Or if you want to temporarily disable this command, click **Disable** .



The above is a small trick that helps the computer to automatically switch the background light, or dark background according to the time setting you have installed on the Task Scheduler. Hope this article is useful to you.

I wish you all success!

You finished reading the article "**How to automatically switch dark backgrounds on Windows 10**" edited by the [TipsMake](#) team. We hope this article has provided you with many useful tech tips and tricks. You can search for similar articles on tips and guides. Thank you for reading and for following us regularly.