

How to arrange network connection on Windows 10

Windows 10 automatically arranges network connections based on parameters. However, we can also change the priority of network connection according to user needs.

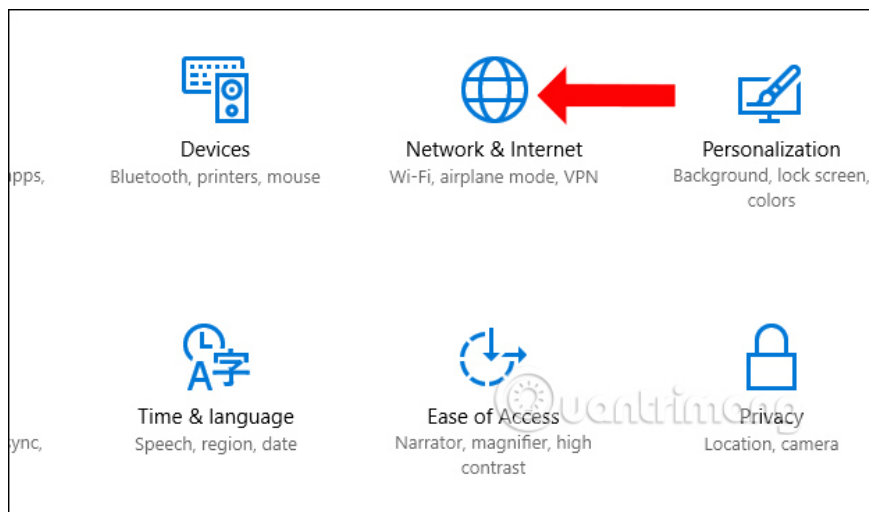
Every laptop has a LAN connection and WiFi connection so you can choose to use and change the connection to WiFi, if the network has problems. By default, Windows 10 automatically prioritizes the order of network connections, based on many parameters. But you do not always want to connect to the network in the default priority order available. For example, instead of the need to connect to Wi-Fi by default, when you plug in the wired network you want to connect the wired network, or vice versa. The following article will guide you how to order Windows 10 network connection.

1. Install laptop to prioritize wired network connection
2. Instructions to fix yellow exclamation computer network with only 3 steps
3. How to set up Wifi priority mode on Android and iPhone

Instructions to arrange the order to connect Windows 10 network via Adapter Settings

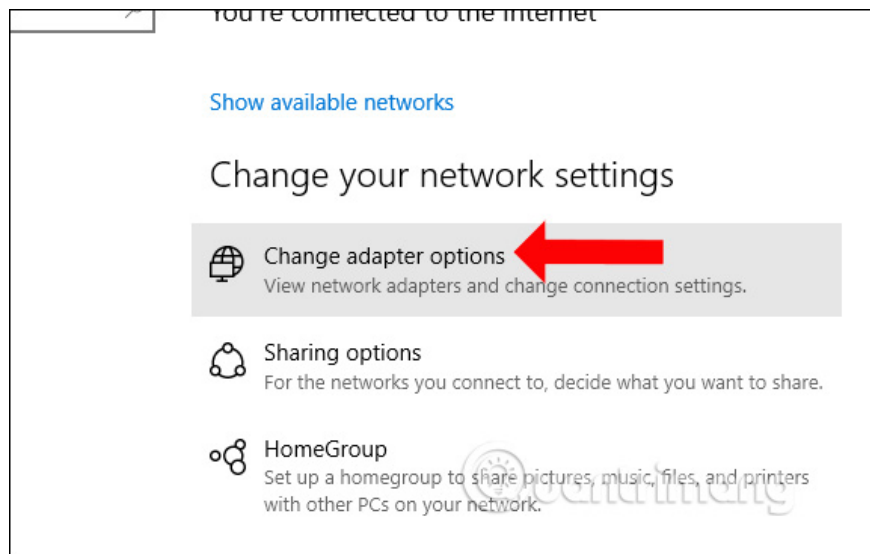
Step 1:

Click the **Settings icon** and then click **Network & Internet**.



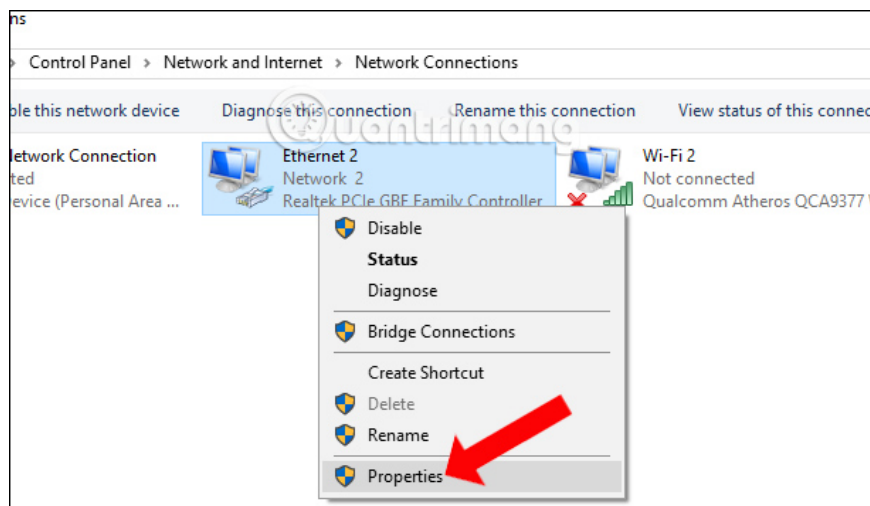
Step 2:

Switch to the new **Status** section on the left side of the interface, look to the right of the **Change your network settings** section and click **Change Adapter options** .



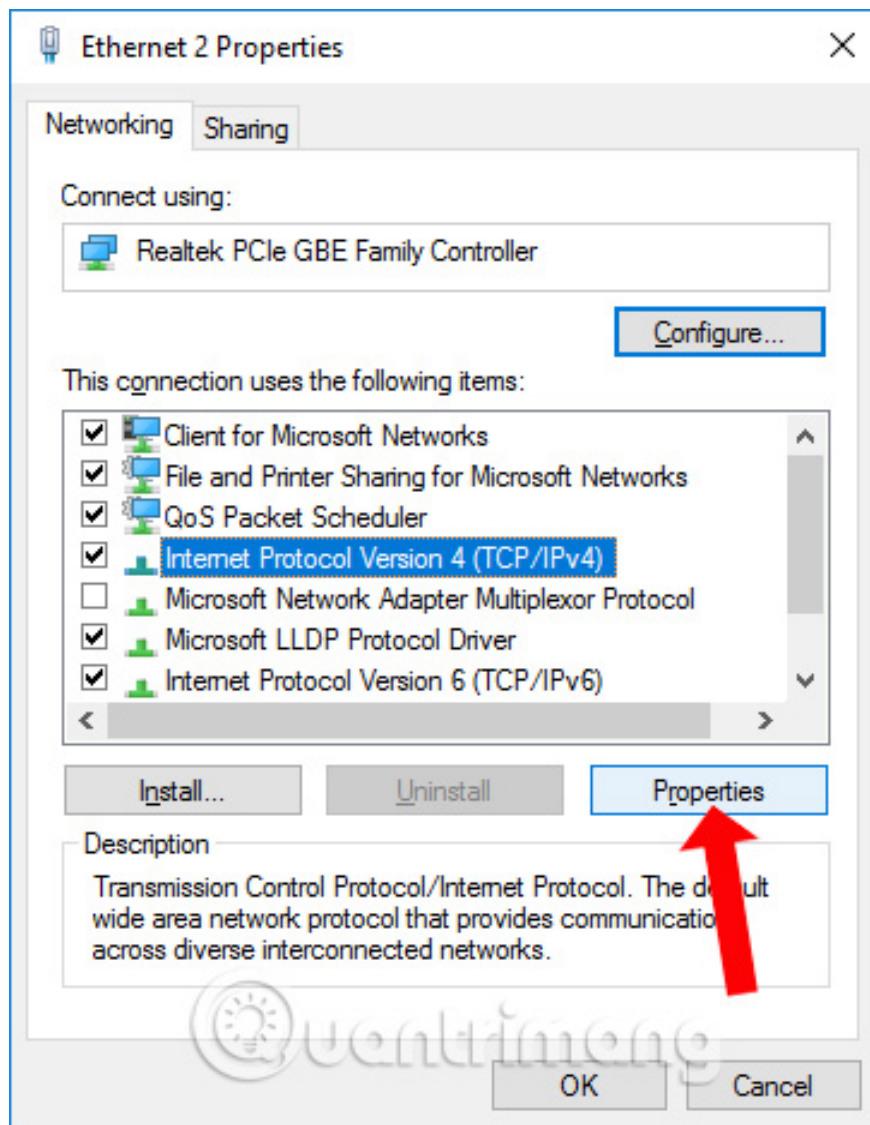
Step 3:

Network connections appear on the computer. You right-click on the network connection to adjust the connection priority mode and select **Properties** .



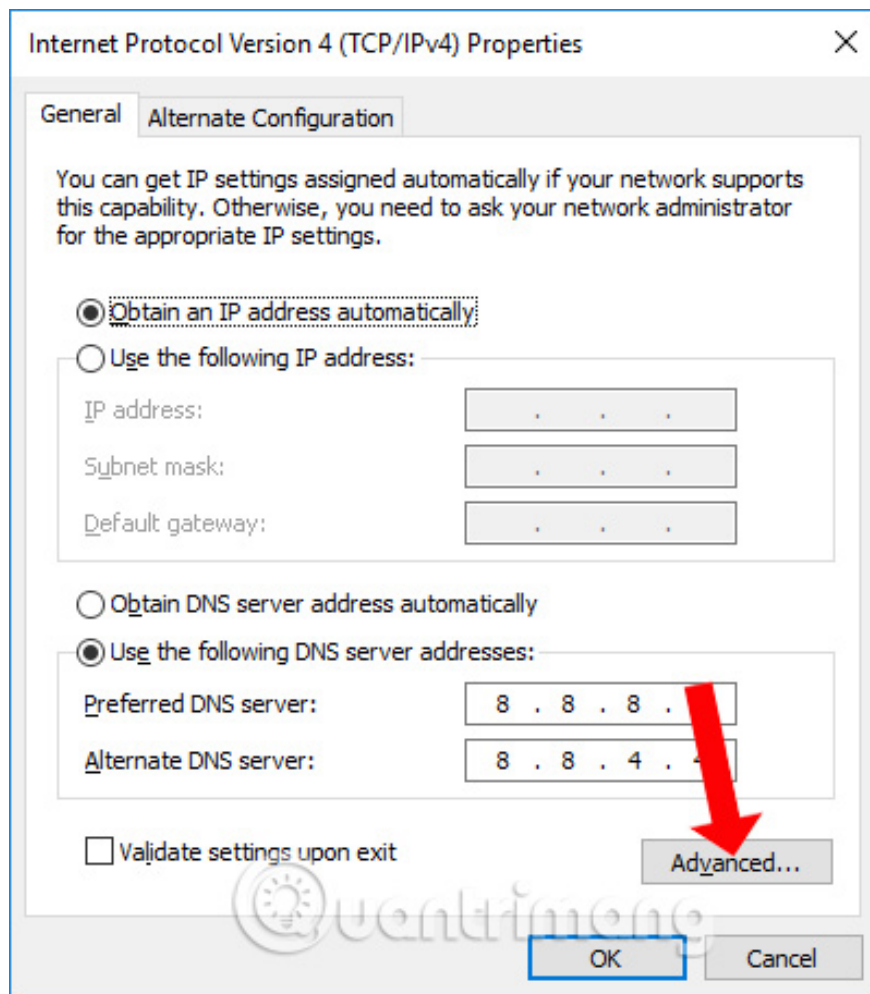
Step 4:

In the new interface, select **Internet Protocol Version 4 (TCP / IPv4)** and then click the **Properties** button.

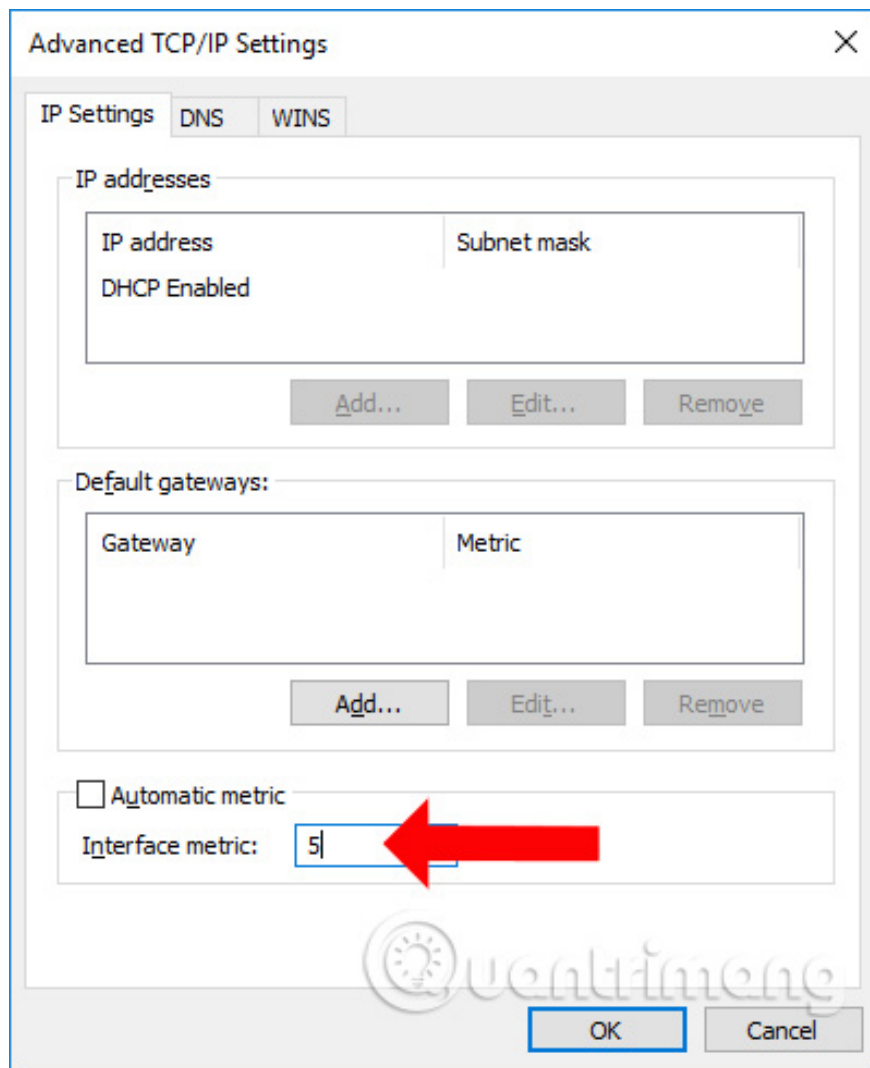


Step 5:

At the next interface click on the **General tab** and then click on **the Advanced button** .



In this new interface **uncheck the Automatic metric** and then in **Interface metric**, the smaller the number, the higher the priority of the connection, the higher the lower the priority. If you enter the network connection port 5, which the WiFi connection port is 6, the wired network is prioritized to connect first.

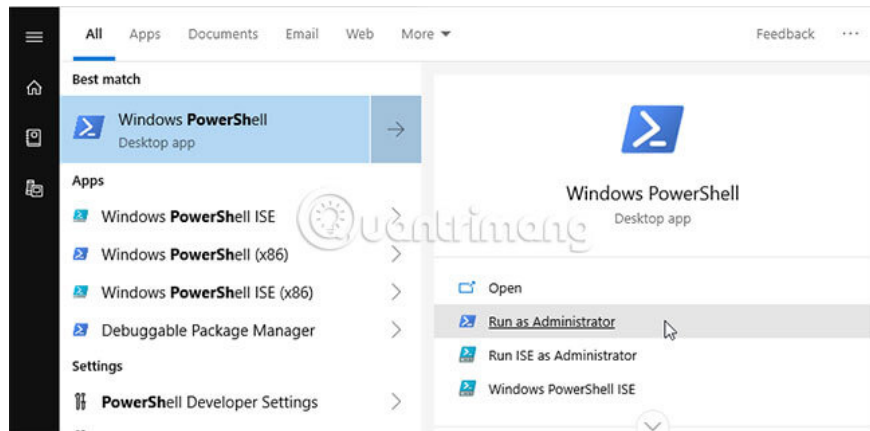


When changing the Interface metric parameter at this network connection, you also change the same parameters on other network connections to prioritize network connectivity on Windows 10. The computer will now connect to the network in order. priority that the user has set.

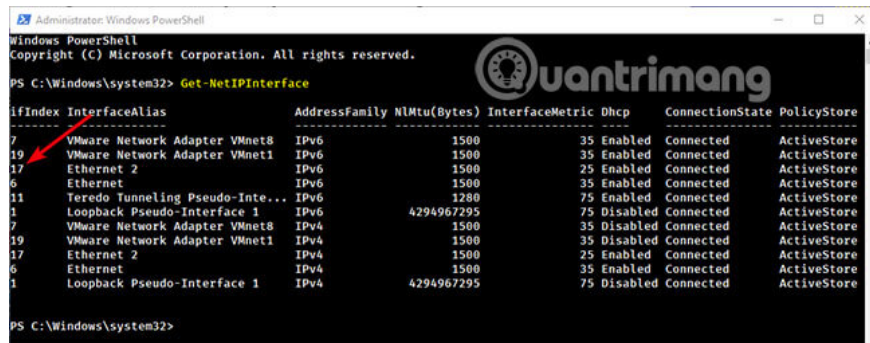
Use the PowerShell command to change the network connection priority

If you wish, you can also use the PowerShell cmdlet (the shortened command used in the Windows PowerShell environment) to change the priority of the network connection. In fact, if you feel comfortable using PowerShell, this option is easier than the first method. All you have to do is find the interface index (the unique identifier associated with the physical interface or logic) and set the priority level.

1. To change the priority for network connectivity through PowerShell, you need admin rights. Search for **PowerShell** in the **Start** menu and select the **'Run as administrator'** option .

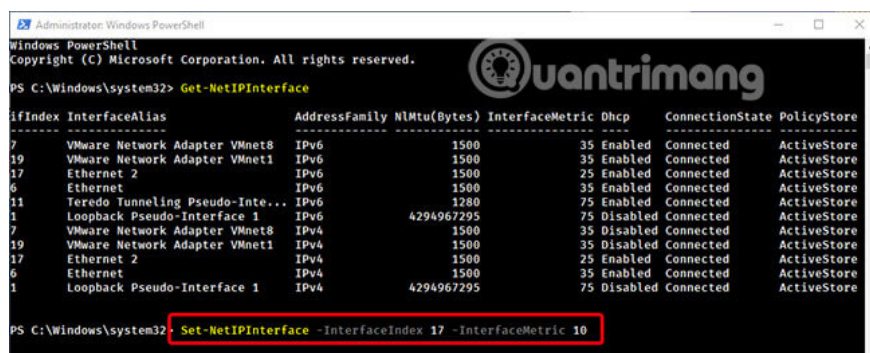


2. We need to find the interface index of the network adapter, by executing the **Get-NetIPInterface** and PowerShell **commands that** will list all network adapters. You will see the interface index number under the **'ifIndex'** section. Note the number of interface indexes of the network adapter. In this example is **17**.



3. Once you have the interface index number of the network adapter, use the command below. Replacement **INTERFACE_INDEX** equals the actual interface index number and **PRIORITY** with a specific priority number (less than or equal to **10**).

`Set-NetIPInterface -InterfaceIndex INTERFACE_INDEX -InterfaceMetric PRIORITY`



4. To verify changes, execute the cmdlet **Get-NetIPInterface**. As you can see, the priority for network connectivity has changed from **25** to **10**.

```
Administrator: Windows PowerShell
PS C:\Windows\system32> Get-NetIPInterface

IfIndex InterfaceAlias AddressFamily NlMtu(Bytes) InterfaceMetric Dhcp ConnectionState PolicyStore
-----
7 VMware Network Adapter VMnet8 IPv6 1500 35 Enabled Connected ActiveStore
19 VMware Network Adapter VMnet1 IPv6 1500 35 Enabled Connected ActiveStore
17 Ethernet 2 IPv6 1500 10 Enabled Connected ActiveStore
6 Ethernet IPv6 1500 35 Enabled Connected ActiveStore
11 Teredo Tunneling Pseudo-Inte... IPv6 1280 75 Enabled Connected ActiveStore
1 Loopback Pseudo-Interface 1 IPv6 4294967295 75 Disabled Connected ActiveStore
7 VMware Network Adapter VMnet8 IPv4 1500 35 Disabled Connected ActiveStore
19 VMware Network Adapter VMnet1 IPv4 1500 35 Disabled Connected ActiveStore
17 Ethernet 2 IPv4 1500 10 Enabled Connected ActiveStore
6 Ethernet IPv4 1500 35 Enabled Connected ActiveStore
1 Loopback Pseudo-Interface 1 IPv4 4294967295 75 Disabled Connected ActiveStore

PS C:\Windows\system32>
```

5. Restart the system to apply the changes.

6. In the future, if you want Windows to handle network connection priority, just execute the command below. Remember to replace **INTERFACE_INDEX** with the actual index interface of network adapter.

```
Set-NetIPInterface -InterfaceIndex 21 -AutomaticMetric enabled
```

See more:

1. How to turn on WiFi on Windows 10
2. How to change Wifi password on computer, phone
3. Fix Wifi error disconnected on Windows 10, 8, 7 and Vista

I wish you all success!

You finished reading the article "**How to arrange network connection on Windows 10**" edited by the [TipsMake](#) team. We hope this article has provided you with many useful tech tips and tricks. You can search for similar articles on tips and guides. Thank you for reading and for following us regularly.