

How to apply Group Policy only to non-administrators in Windows 10

If you want to apply a policy to a specific user, read the following article to learn how to do it.

Group Policy makes it easier to configure some settings in Windows. When changing a specific policy (depending on the computer or user configuration), it will be applied to any computer and user.

However, if you want to apply some specific policies such as disk access restrictions, how to do for non-administrators? This article will show you how to apply group policy to non-system administrators.

1. 10 important Windows Group Policy settings need to be done immediately
2. How to reset Local Group Policy settings on Windows 10
3. Install the printer using Group Policy Object

Note:

1. Group policy is only available for Windows Pro and Enterprise users. If you are using Windows Home version, you cannot follow this guide.

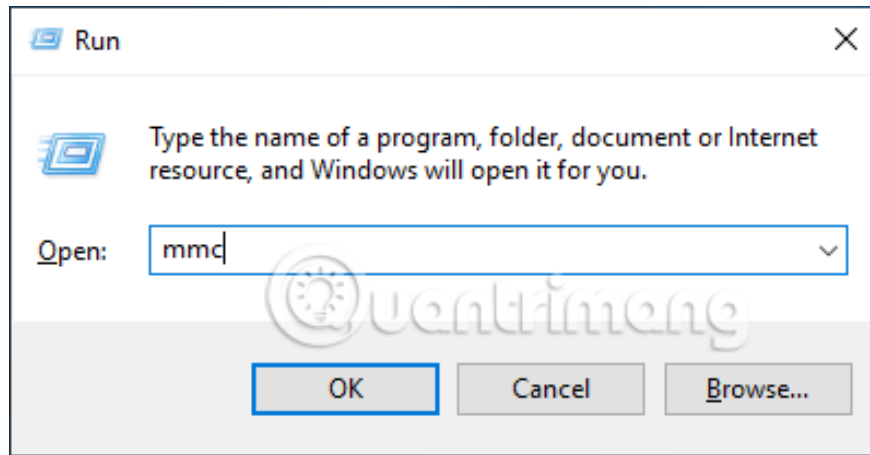
See also: [How to install Group Policy Editor \(GPEdit.Msc\) on Windows 10 Home Edition](#)

1. This tutorial works on Windows 10 but you can apply for Windows 7 and Windows 8.

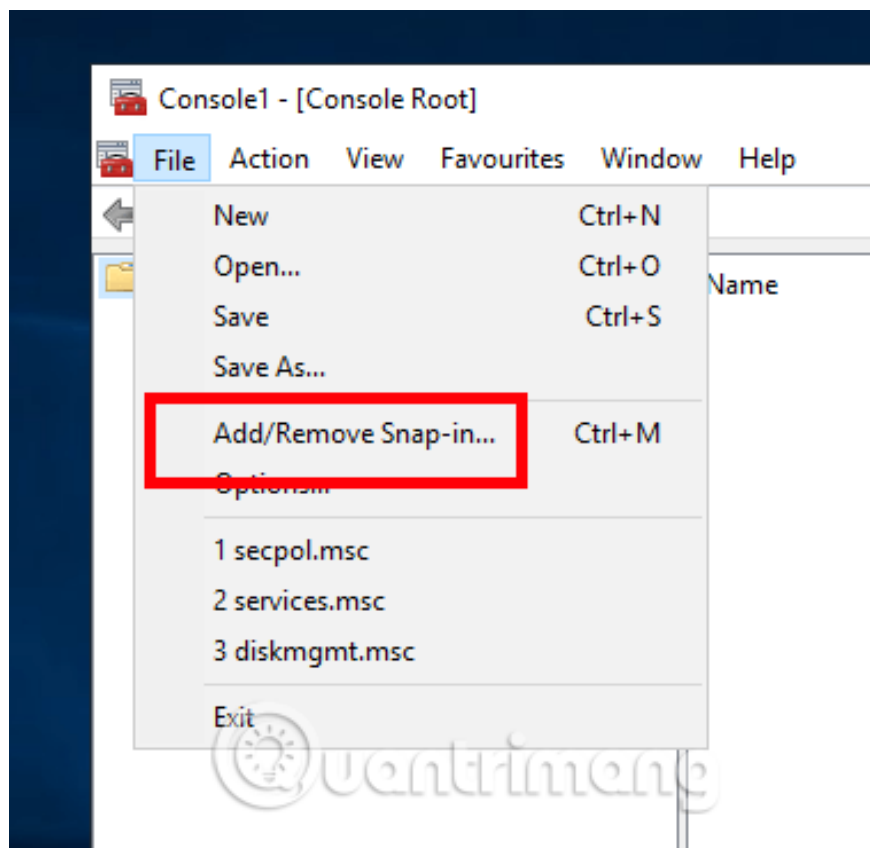
How to apply group policy to non-administrators

Because the Group Policy Editor normally doesn't allow you to apply policies only to a specific user group, we need to create a group policy snap-in on the machine using MMC (Microsoft Management Console).

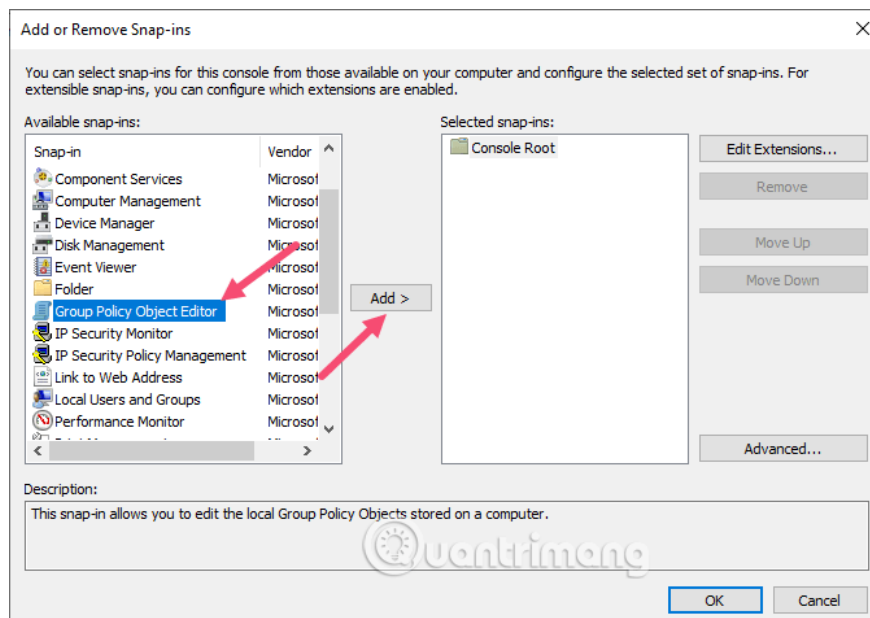
Step 1 . Press the **Windows + R** key, type **mmc** and click the **OK** button to open the Microsoft Management Console. You can also search **mmc** on the Start menu.



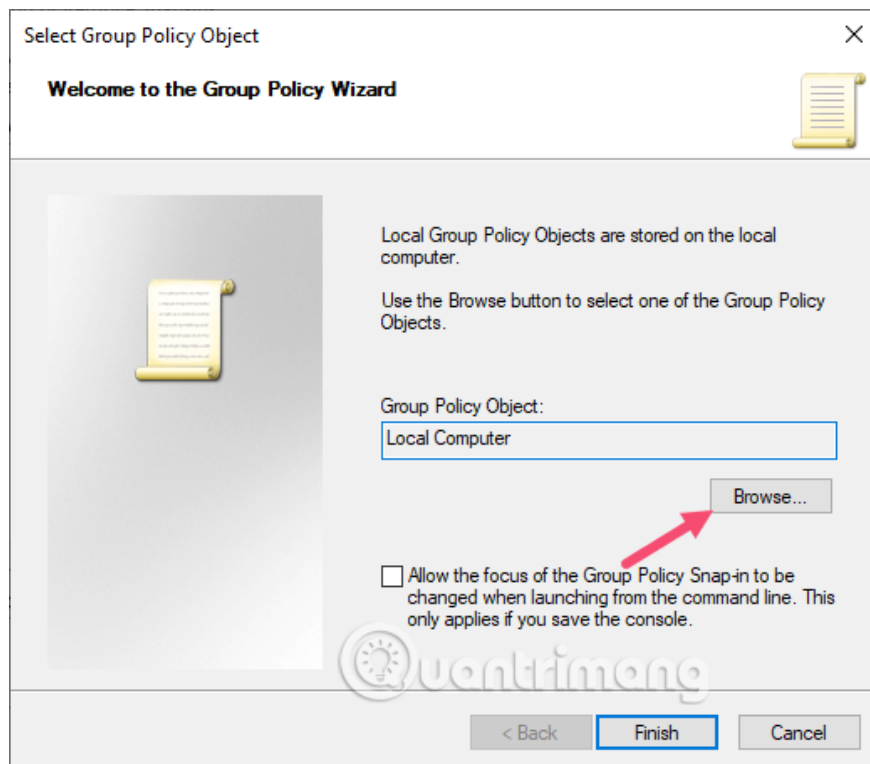
Step 2 . In the Microsoft Management Console window, go to **File** in the top navigation bar and select the **Add / Remove Snap-in** option .



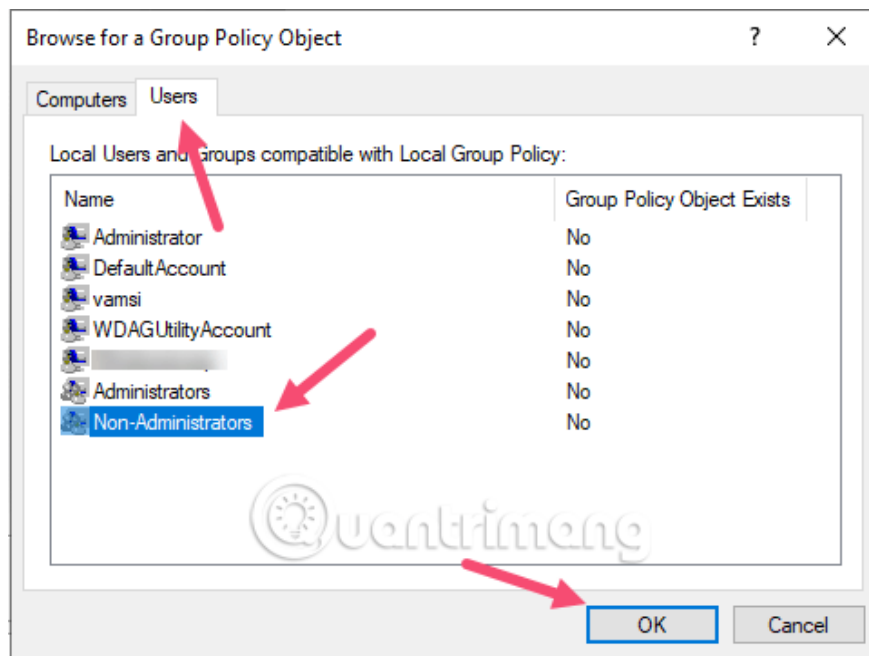
Step 3 . This will open the **Add or Remove Snap-ins** window. Here, you need to find the **Group Policy Object Editor** in the left pane, select it and click the **Add** button.



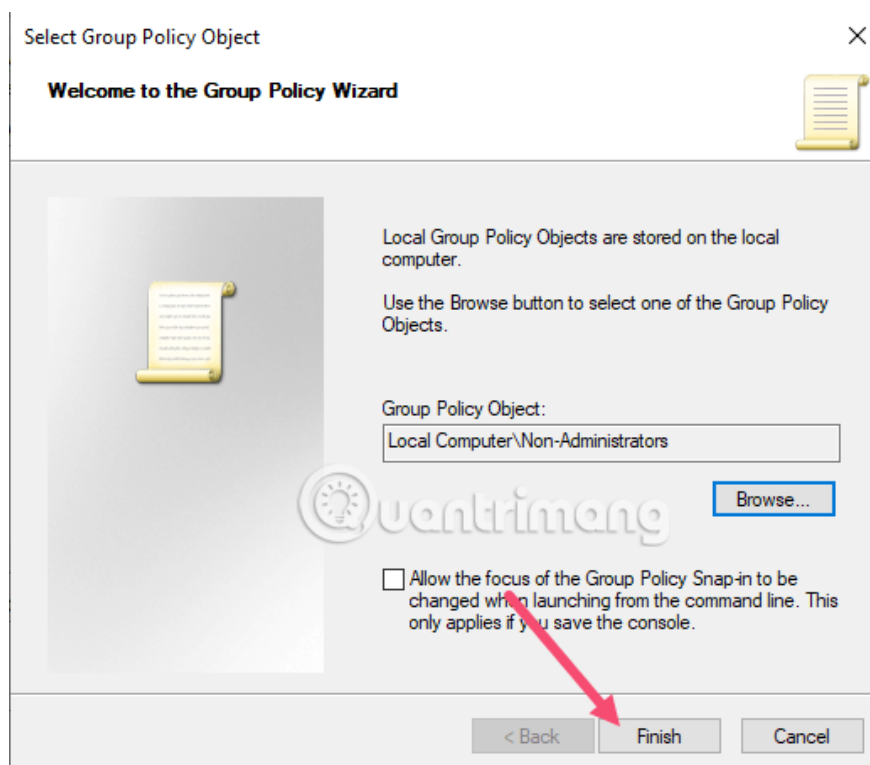
Step 4 . Now we need to select all non-admin accounts. In the Group Policy tutorial, click **Browse** .



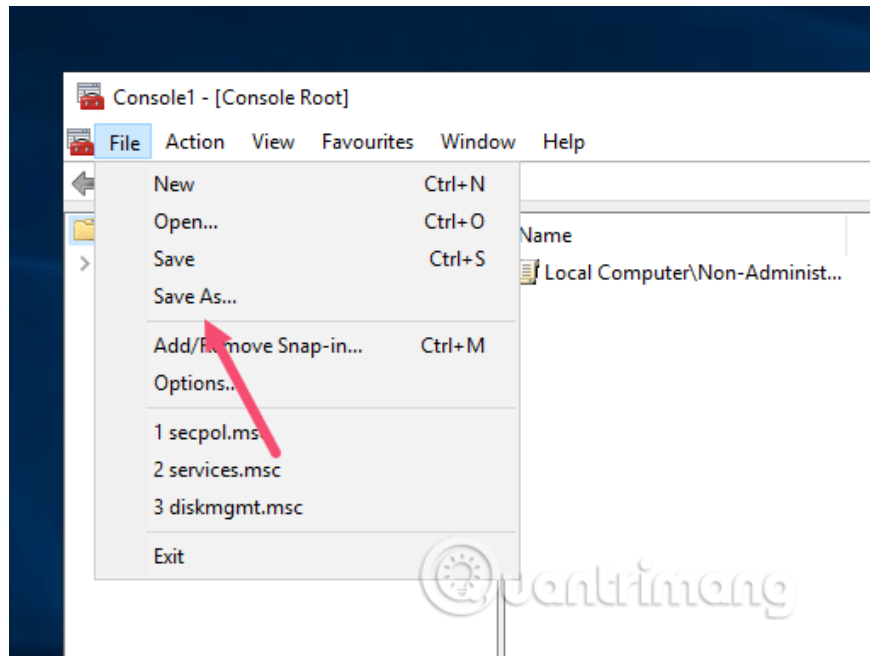
Step 5 . Access the **Users** tab, select **Non-Administrators** from the **Local Users and Groups** list and click the **OK** button.



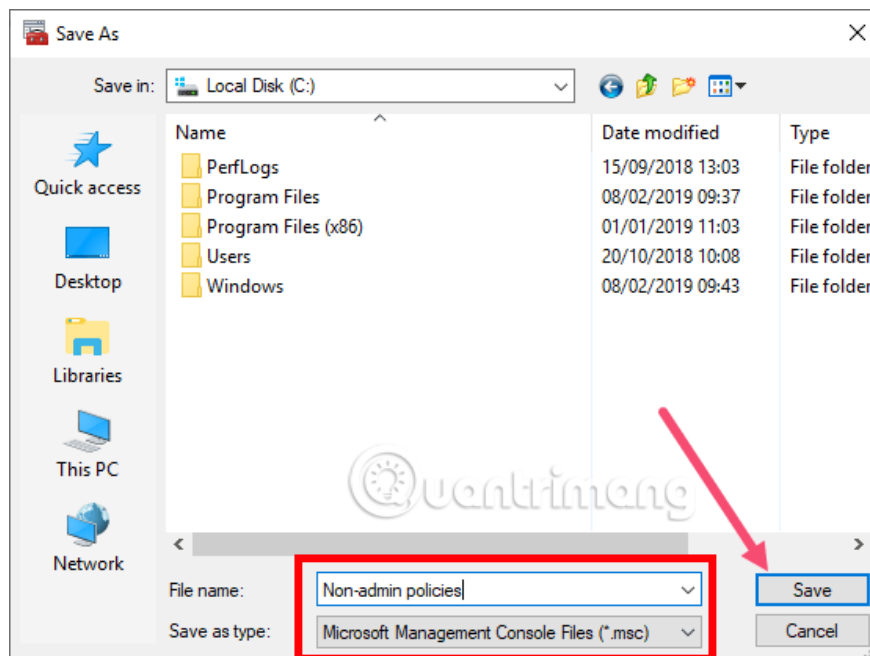
Step 6. On the screen, click the **Finish** button to save the changes.



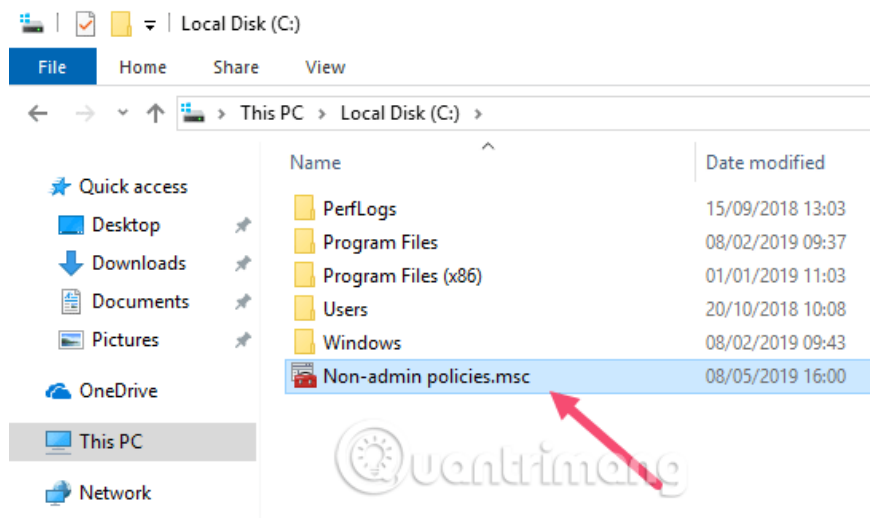
Step 7 . You have just completed adding a snap-in with custom settings. Now we need to save this snap-in for later use if desired. To save, go to **File** and select the **Save As** option.



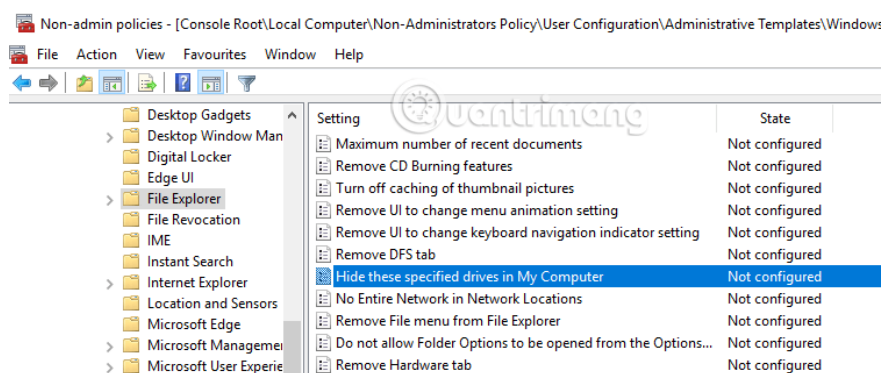
Step 8 . Go to where you want to save the snap-in, name the snap-in, make sure in the **Save as type field**: select **Microsoft Management Console Files (*.msc)** and click the **Save** button. In this example, we will save the MSC file in the C drive root directory.



Step 9 . You can now use the snap-in you just created to apply group policy settings to all users except administrators by double-clicking on the file.



Step 10 . This will open the snap-in inside the MMC. Like the regular Group Policy Editor, find the policy and double-click it to change the policy settings. For example, if you do not want someone who is not an administrator to access a specific drive on your system, you need to change the option to **Hide these specified drives on My Computer** .



You can follow the same steps to apply policy settings to a specific user. Instead of selecting a group, simply select a specific user in Step 5.

I wish you all success!

You finished reading the article "**How to apply Group Policy only to non-administrators in Windows 10**" edited by the [TipsMake](#) team. We hope this article has provided you with many useful tech tips and tricks. You can search for similar articles on tips and guides. Thank you for reading and for following us regularly.