

How to Align an HP Printer

When an HP printer prints paper that is not aligned or displays an 'alignment failed' error, the ink cartridge may be misaligned. Today's TipsMake will show you how to re-align ink cartridges using your Windows, macOS computer or right on the HP printer's display screen.

Use HP Smart for Windows 10

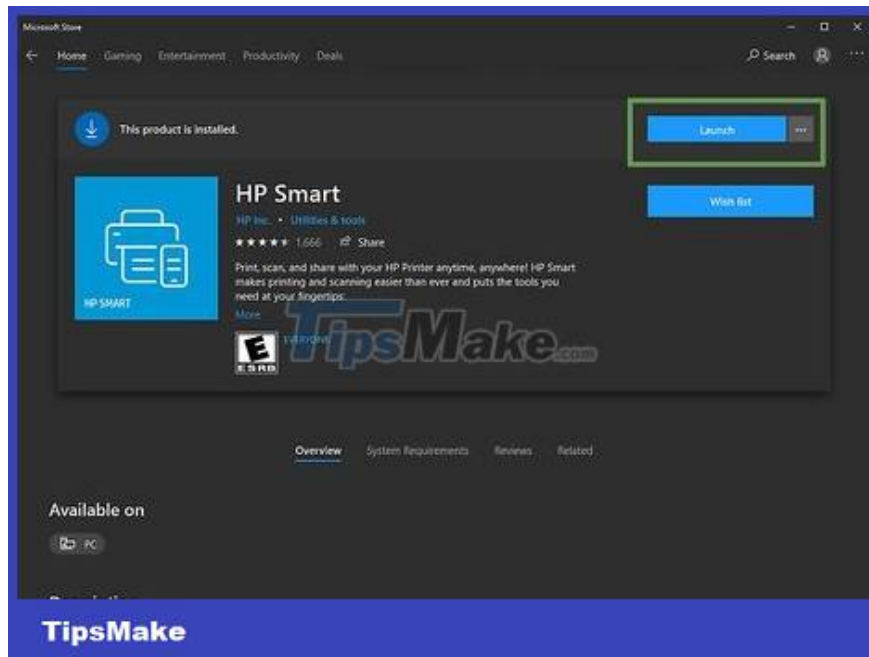


Turn on the HP printer. This method will show you how to use HP Smart - a free printer management app - for Windows 10.

You can also use HP Solutions Center (2010 and later models) or HP Printer Assistant (2010 and earlier models) to manage printers. If one of these applications is already in the Start menu, see Use HP Solutions Center or Printer Assistant for Windows.



Put some new paper in the printer's tray. To align the printer, you must use standard letter paper (size 21.6 x 27.9 cm) and in brand new condition.



Open the HP Smart app on your PC. If the application is available on your computer, you will find it in the Start menu. If you can't find it, follow these steps to install it now:

Click the Start menu and select **Microsoft Store** .

Type `hp smart` in the "Search" bar and press ? Enter.

Click the **HP Smart** app (blue with printer and paper icon).

Click the blue Get **button** .

Launch the app and follow the on-screen instructions to set up the printer.



Click the printer in the **HP Smart** window.



Click **Print Quality Tools** . This option is in the left column, under the "Utility" heading.

If there are no text options in the left column, click the three-line menu in the upper left corner of the window to expand it.



Click the Align option.



Follow the instructions on the screen. The Align option will guide you through the printing process of a special page used to realign the printer cartridge.

With printers with built-in scanning, this process also includes scanning the alignment page. Further instructions will appear on the screen.

If an "Alignment Failed" or "Alignment Unsuccessful" error appears, see the Fix Alignment Problems method.

Use HP Solutions Center or Printer Assistant for Windows



Turn on the HP printer. This method applies to all versions of Windows.

If the HP printer was manufactured around 2010 or later, the device management application may be HP Solutions Center. If the printer is more outdated, you're more likely to be working with the HP Printer Assistant software.

To determine the HP software installed on your computer, you need to open the Start menu, find the HP submenu and see if it is HP Solutions Center or HP Printer Assistant .

If neither option is available, visit <https://support.hp.com/us-en/drivers> in a web browser, then follow the onscreen instructions to find and download the installation application. HP Easy Start for your printer model.



Put some new paper in the printer's tray. To align the printer, you must use standard letter paper (size 21.6 x 27.9 cm) and in brand new condition.



Open the HP Solution Center application on the computer. The application belongs to the Start menu, sometimes in the **HP** folder .

If you can't find **the HP Solutions Center** , you can open **the HP Printer Assistant** .



Click Settings . It's near the bottom of the window.

If you're using HP Printer Assistant, click **Print and Scan** , then select **Maintain Your Printer** . Then, continue to Step 7.



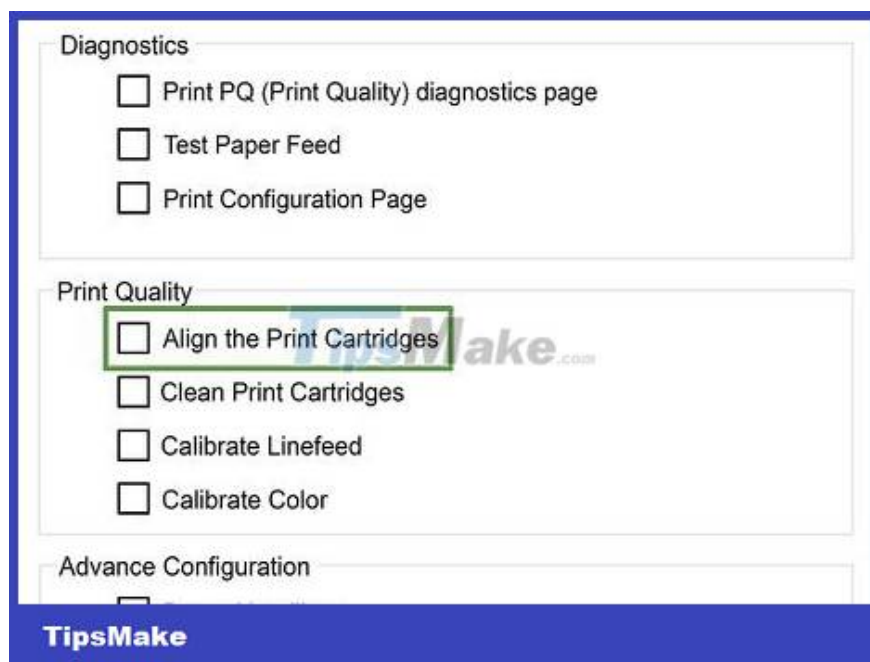
Click **Print Settings** .



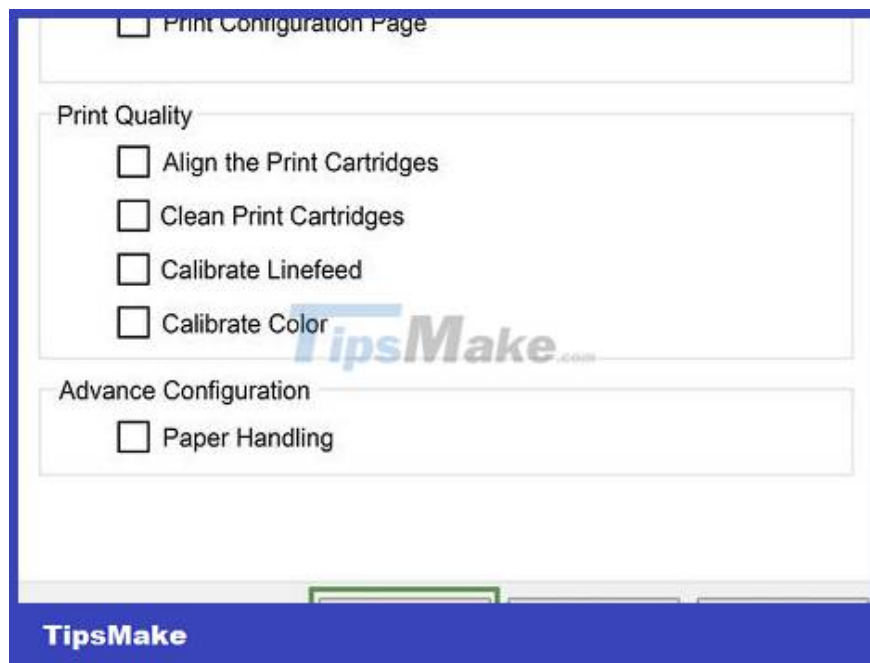
Click **Printer Services or Device Services** .



Click Printer Toolbox .



Check the "Align the Print Cartridges" box. This option is under the "Print Quality" heading in the middle of the window.



Click Align. It's at the bottom of the window.



Follow the on-screen instructions to align the printer cartridge. With printers with built-in scanning, this process also includes scanning the alignment page. Further instructions will appear on the screen.

If an "Alignment Failed" or "Alignment Unsuccessful" error appears, see the Fix Alignment Problems method.

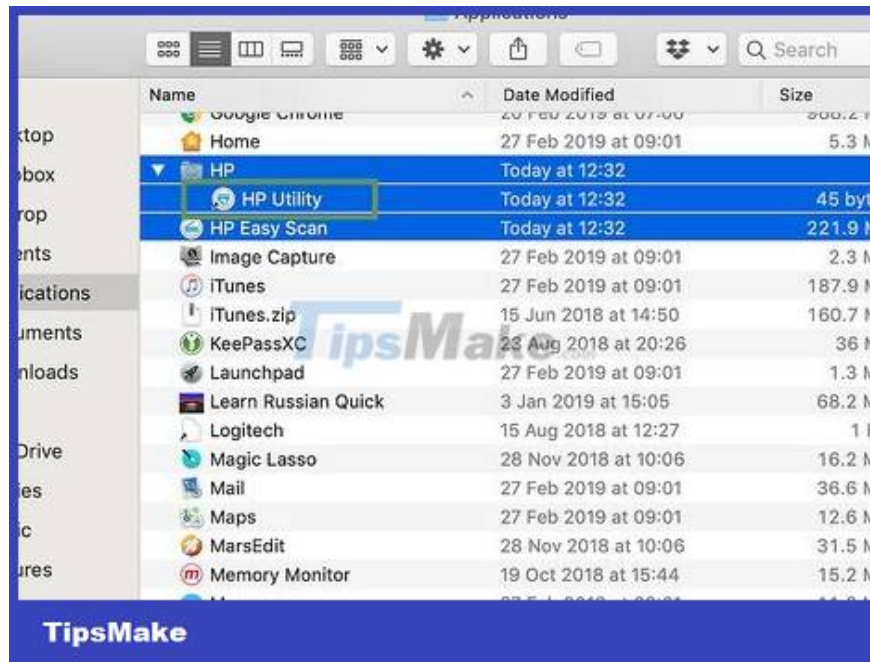
Use HP Utility on Mac



Turn on the HP printer.



Put some new paper in the printer's tray. To align the printer, you must use standard letter paper (size 21.6 x 27.9 cm) and in brand new condition.

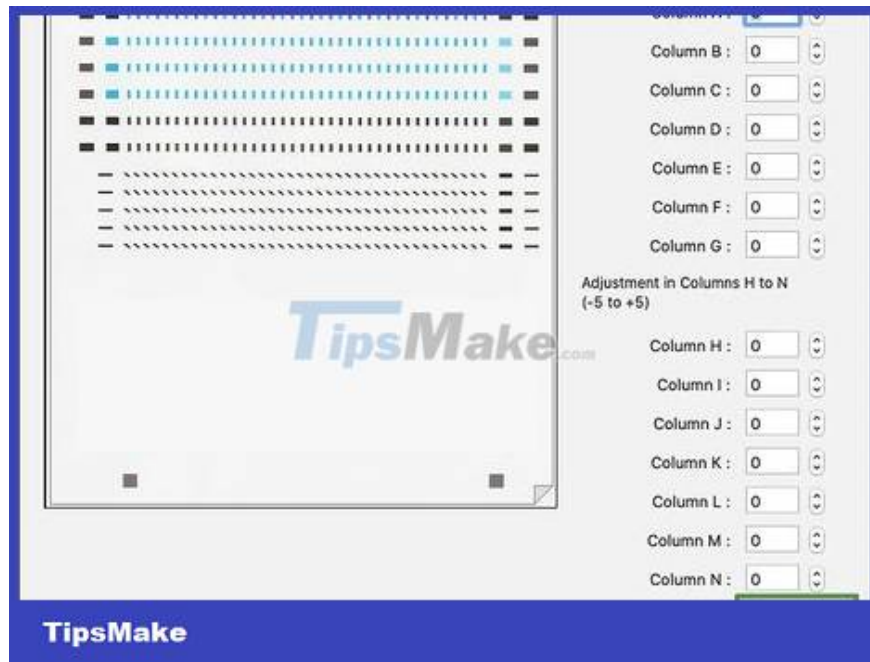


Open HP Utility on your Mac. If already installed, the application will be located in the **HP** subfolder under **Applications** .

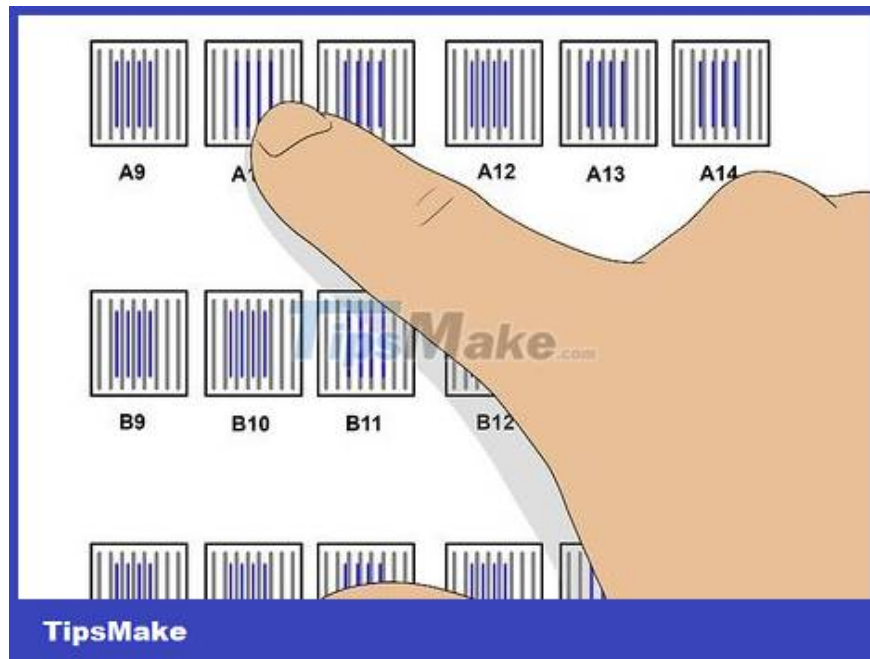
If you cannot find the application, you need to proceed with the installation. Go to <https://support.hp.com/us-en/drivers> in a web browser and follow the onscreen instructions to find and download the HP Easy Start installation application for your printer model. After downloading, double-click the .dmg file to install HP Utility.



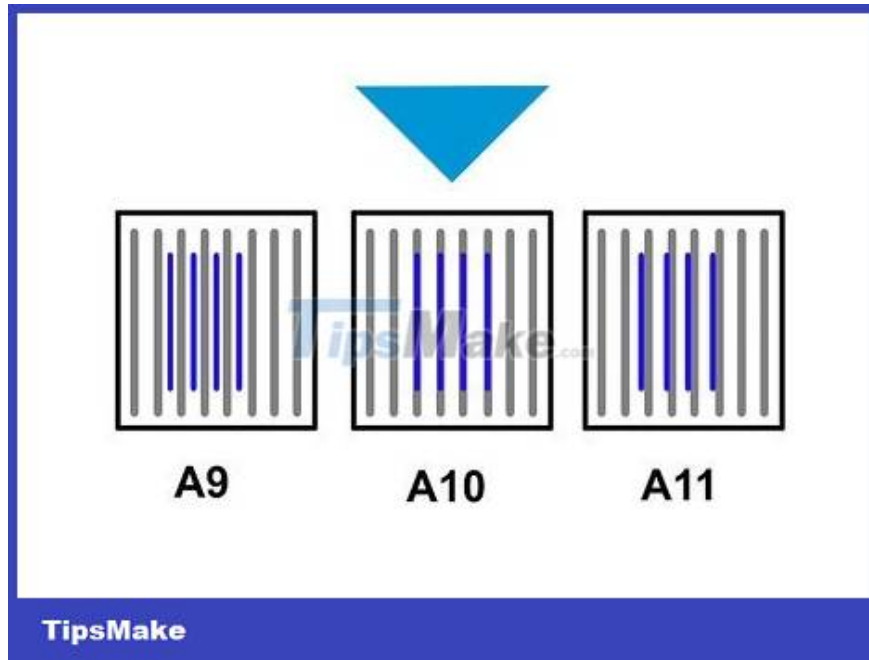
Click Align located in the first group of icons. The Align Cartridges window will open.



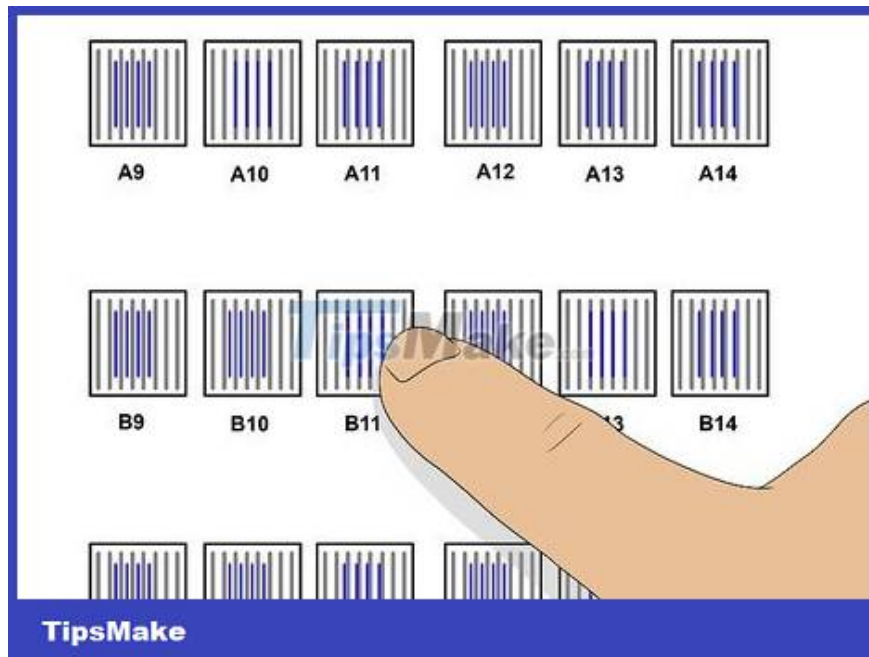
Click Align . The alignment page will be sent to the printer. The printed page will display many numbered boxes with blue and black lines.



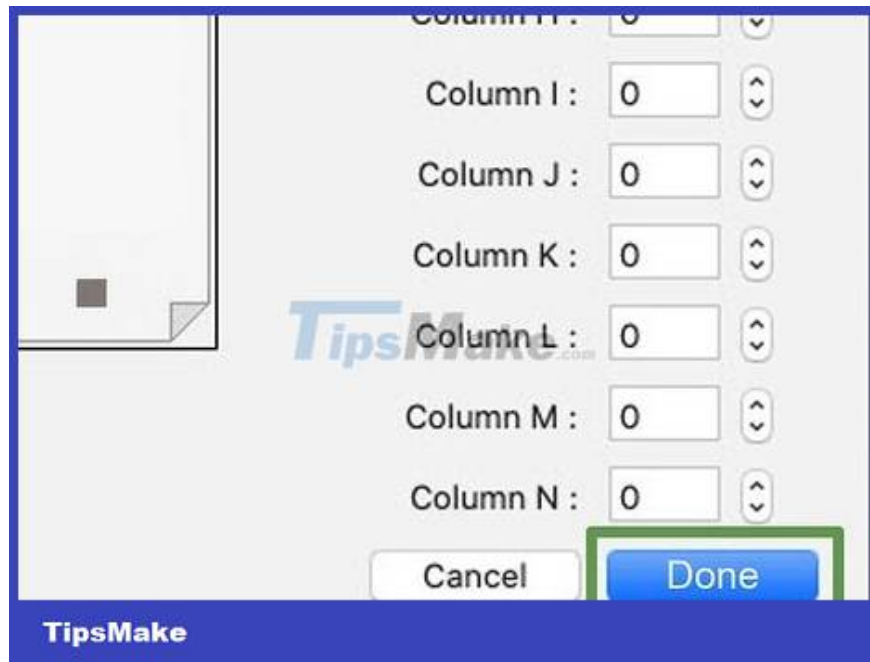
Find the cell in row A with the most overlapping lines. You need to find the cell with the largest distance between the lines. Then, write down the cell number.



Select the box with the corresponding number on the printer software. Select the appropriate cell from column A.



Select the cell containing the most overlapping lines in another column. Continue until you have selected through all the letter columns.



Click Done . The printer cartridge will begin to be re-aligned.

If an "Alignment Failed" or "Alignment Unsuccessful" error appears, see the Fix Alignment Problems method.

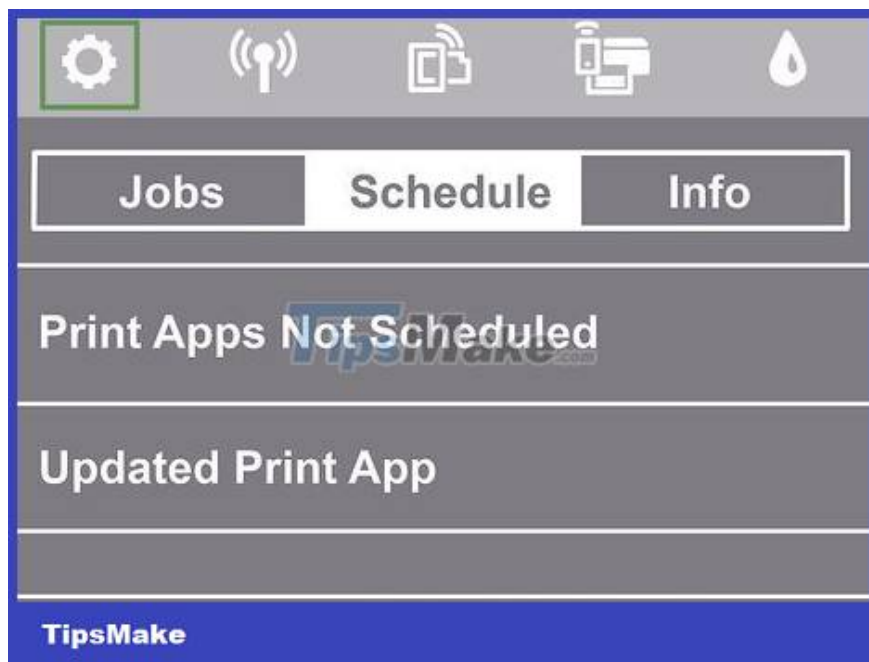
Use the printer screen



Turn on the HP printer. If your printer has a screen, you can align the cartridges without using a computer.



Put some new paper in the printer's tray.



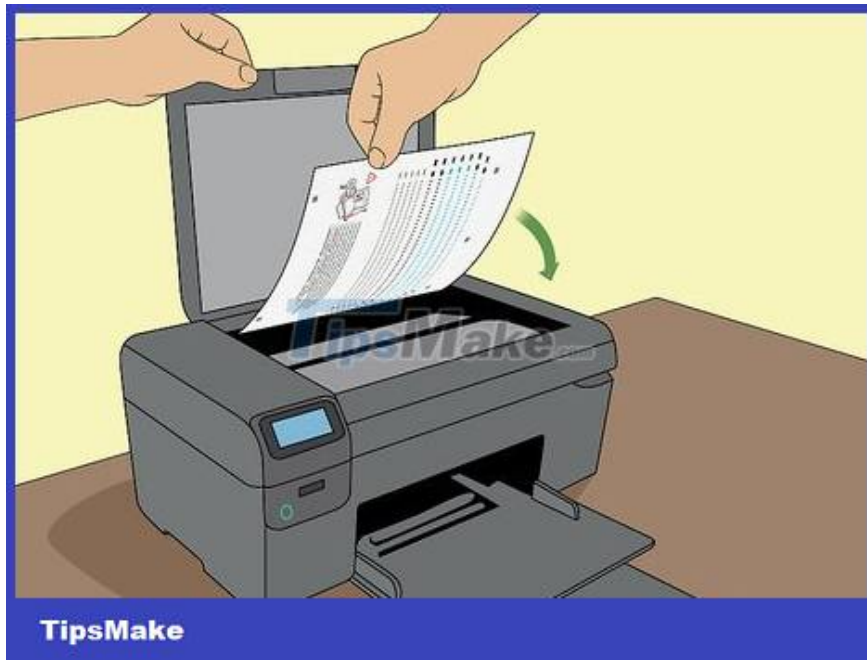
Open the Settings or Tools menu on the printer. You can use the arrow keys next to the printer screen to navigate.



Select Align Printer . The alignment check page will be printed. The printer will prompt you to scan this page now.



Lift the scanner lid. The cartridges will be realigned during the special page scanning process.



Place the alignment test page in the scanner with the printed side facing down.



Align the page with the front right corner of the scanner glass.

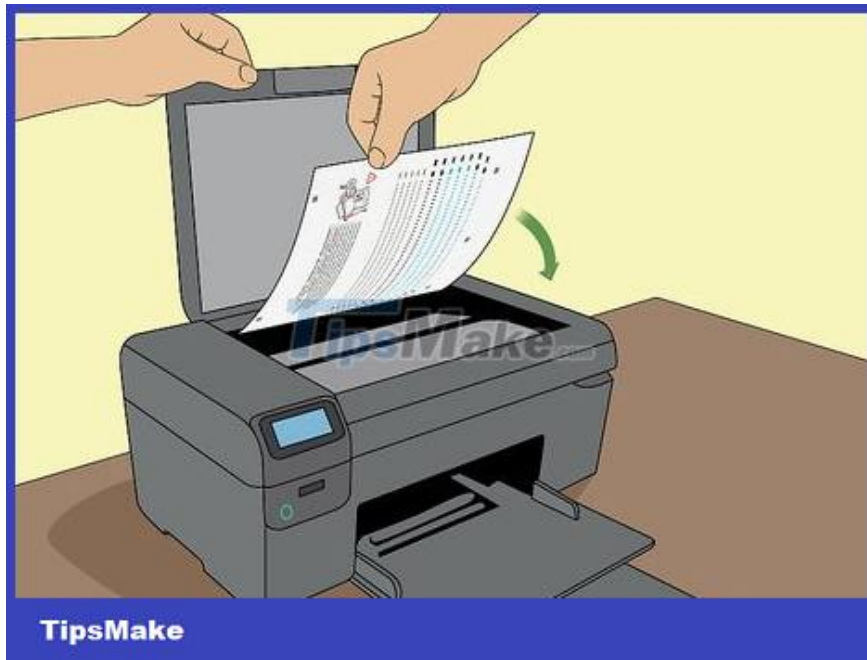


Close the scanner lid and press OK. The printer will begin scanning and realigning the cartridges if necessary. If an "Alignment Failed" or "Alignment Unsuccessful" error appears, see the Fix Alignment Problems method.

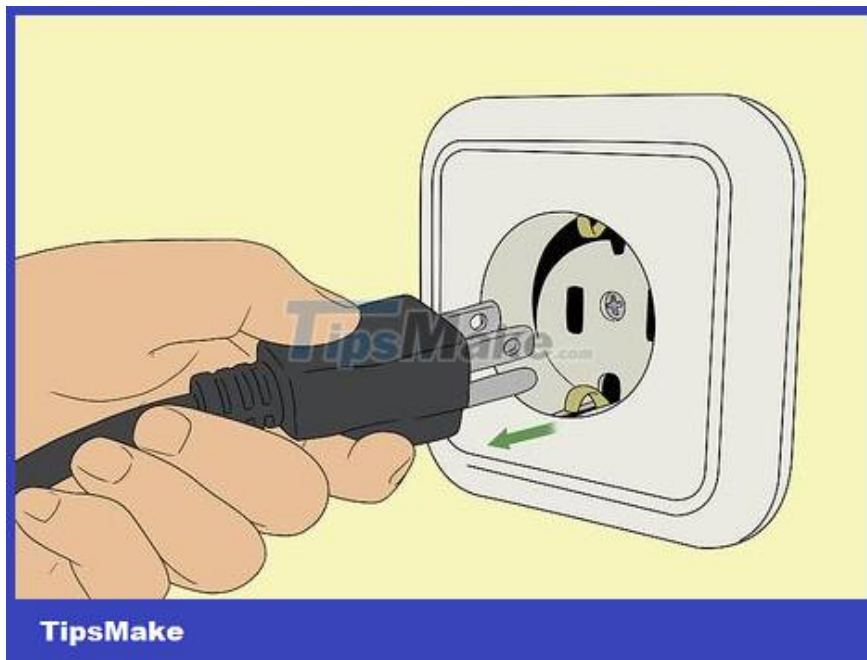
Fix alignment problems



The paper you use to align the printer must be clean. If the method for your current operating system fails to align the printer, check to make sure that the paper used is fresh, not wrinkled/folded, and is placed in the machine properly.



Scan the alignment page if required. With a printer with built-in scanning, there will be an additional step of scanning the newly printed alignment page to realign the ink cartridges. You need to follow the instructions on the screen (as well as any instructions printed on the alignment page) to ensure that no steps are skipped.

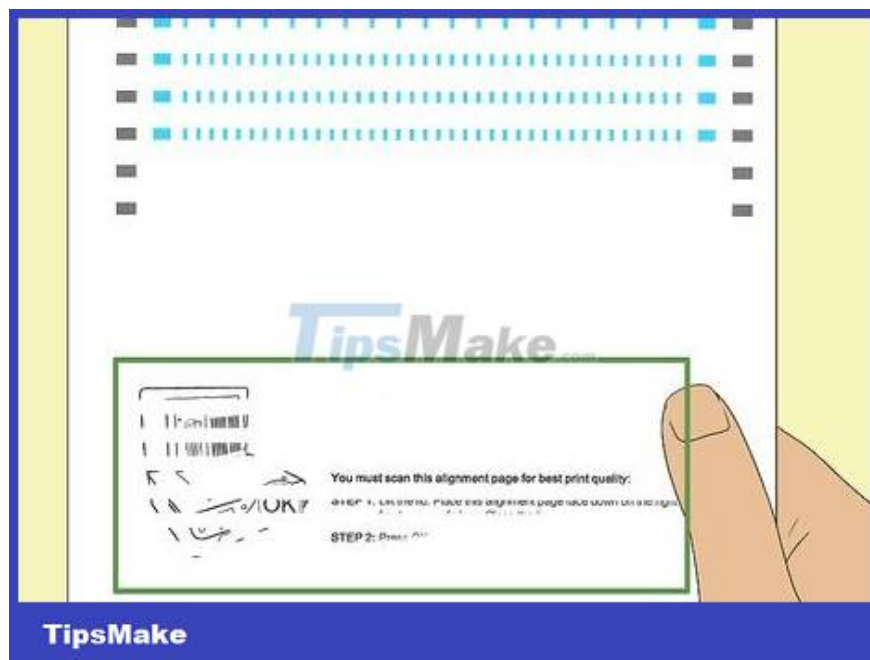


Reset the printer. If you are still having problems, unplug the power cable from the printer for 60 seconds, then plug it back in. Perform cartridge alignment again when the printer restarts.



Check to make sure you are using genuine HP print cartridges. If you are using a non-HP ink cartridge or toner, replace it with the correct brand. Counterfeit cartridges can cause alignment problems.

Visit <http://www.hp.com/go/anticounterfeit> to learn more about how to identify counterfeit ink cartridges.



Review the printed alignment page to evaluate for ink problems. A properly aligned page will have straight black and dark blue lines.

If the printer is low on ink, the alignment page may appear blurred, streaked, or smudged. Black or blue may not be printed on the page. Any of these signs indicate that the printer is low on ink and needs to be checked.

If the alignment page doesn't have any stripes and you see both black and blue on it, contact HP support for printer service.

You finished reading the article "**How to Align an HP Printer**" edited by the [TipsMake](#) team. We hope this article has provided you with many useful tech tips and tricks. You can search for similar articles on tips and guides. Thank you for reading and for following us regularly.
