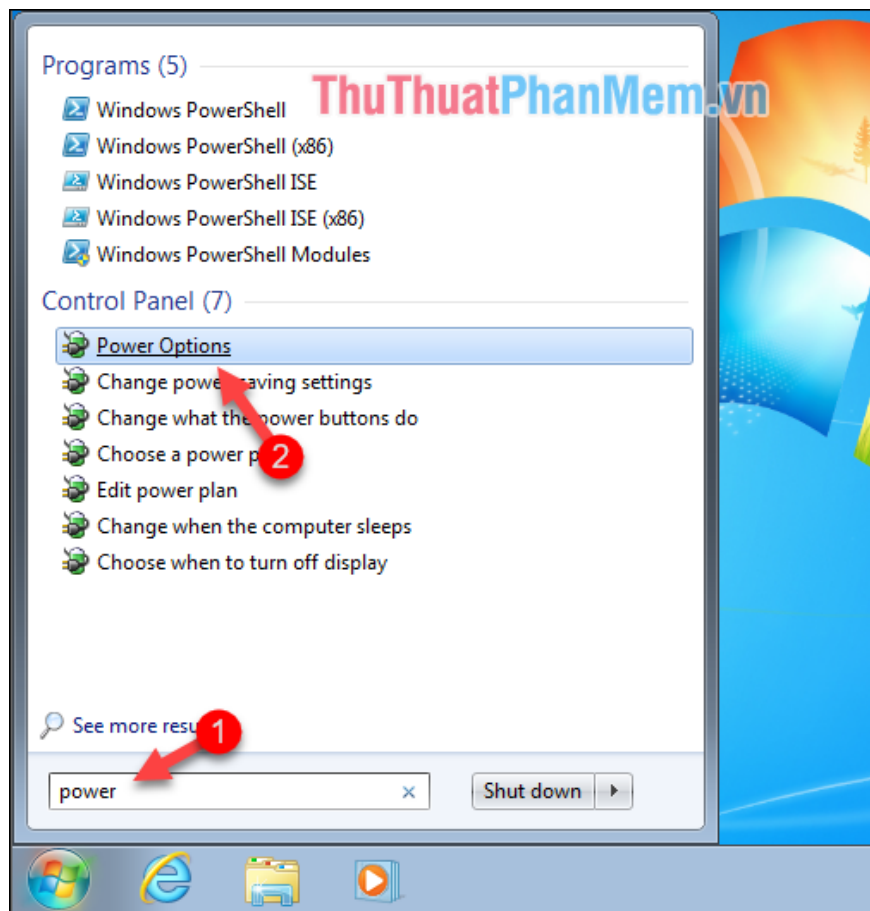


How to adjust the time to turn off the screen Win 7

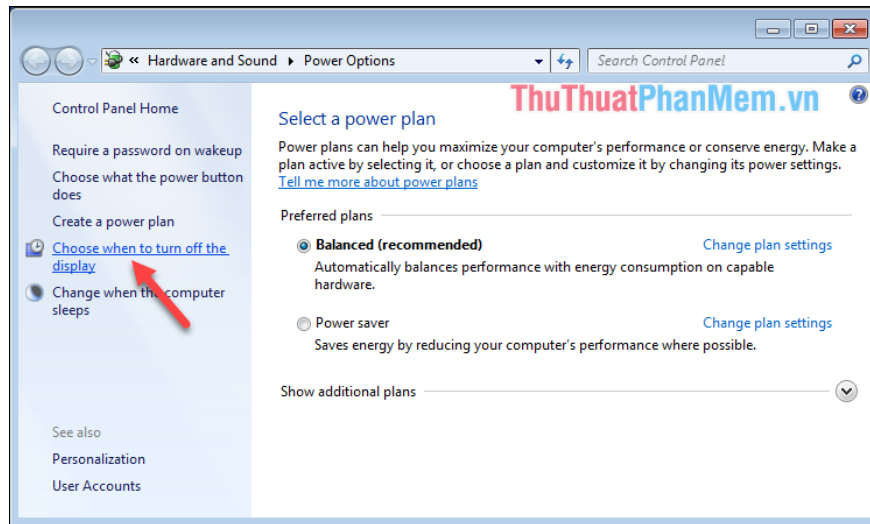
How to adjust the time to turn off the Windows 7 screen. By default, if the computer is not in use after a period of time, the computer will automatically turn off the screen. This is a pretty good feature of windows, it will help you save power during use.

Default in windows if after a period of not using the computer will automatically turn off the screen. This is a pretty good feature of windows, it will help you save power during use. However, some of you are not satisfied with this mode because some cases of waiting time is too long for the screen to turn off, or so quickly makes you uncomfortable. So in this article TipsMake.com will guide you how to customize the time to turn off the screen in windows 7. Invite you to track.

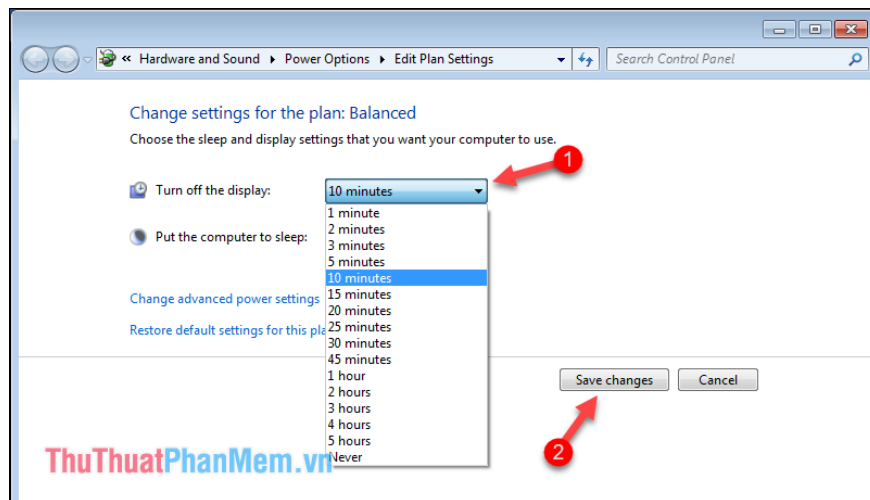
Step 1: Open the **Start menu** , enter Power from the search box, and then select **Power Options** in the results.



Step 2 : In the new window select **Choose when to turn off the display**.



Step 3: In **Turn off the display** you can choose the time the computer screen automatically turns off according to your liking for example 10 minutes we choose 10 minutes. After selecting, click **Save changes** to save the settings.



So with just a few simple steps, we can customize the time to automatically turn off the screen according to our wishes. Thank you for following the article.

You finished reading the article "**How to adjust the time to turn off the screen Win 7**" edited by the [TipsMake](#) team. We hope this article has provided you with many useful tech tips and tricks. You can search for similar articles on tips and guides. Thank you for reading and for following us regularly.