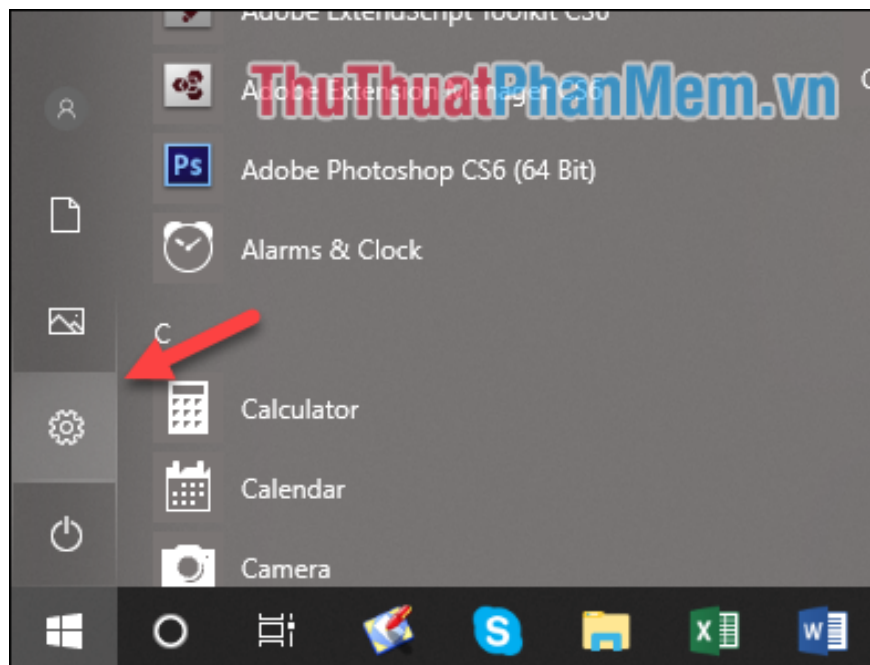


How to adjust the time to turn off the screen Win 10

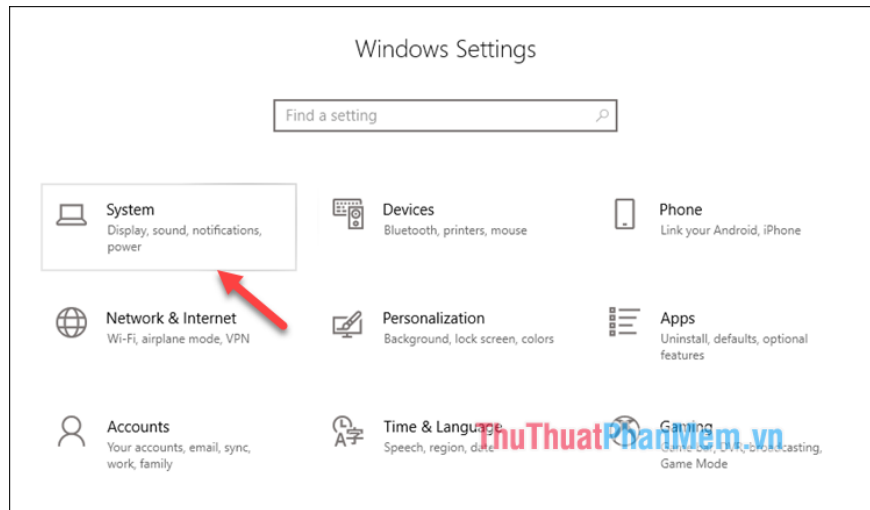
How to adjust the time to turn off the Windows 10 screen. By default, if the computer is not in use after a period of time, the computer will automatically turn off the screen. This is a pretty good feature of windows, it will help you save power during use.

Default in windows if after a period of not using the computer will automatically turn off the screen. This is a pretty good feature of windows, it will help you save power during use. However, some of you are not satisfied with this mode because some cases of waiting time is too long for the screen to turn off, or so quickly makes you uncomfortable. Therefore, in this article, TipsMake.com will guide you how to customize the screen off time in windows 10, please follow along.

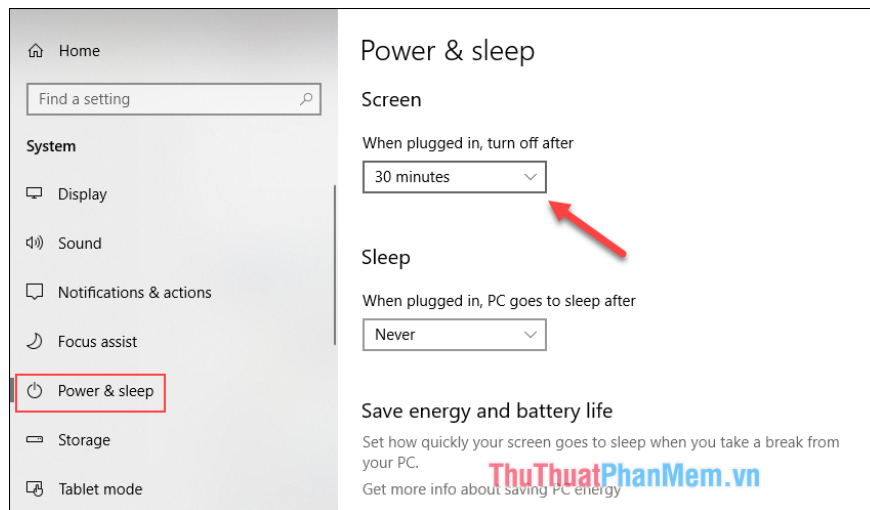
Step 1: You select **Settings**



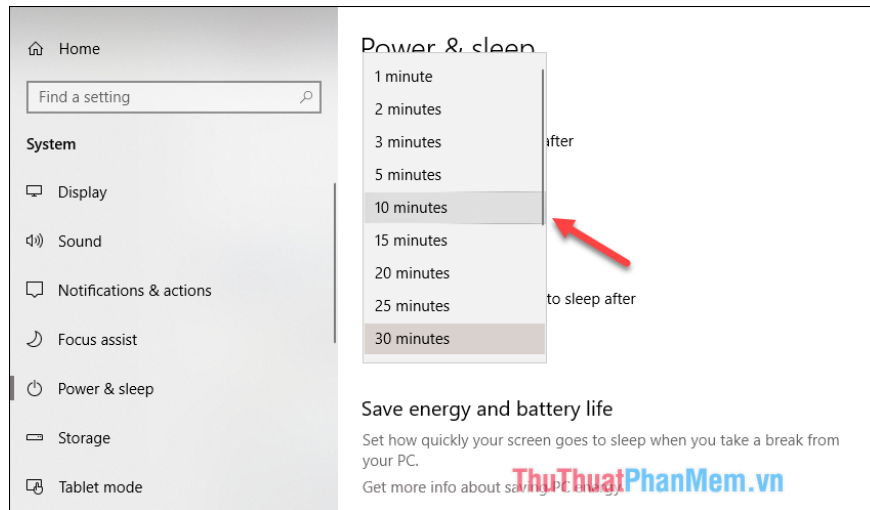
Step 2 : The Settings window appears, select the **System** item



Step 3 : In the new window, select **Power & sleep** , then the desks to the right of the window will see the item **Screen** is being set to turn off the screen after 30 minutes, ie 30 minutes.



Step 4: You can click on the square and choose the time you want the screen to turn off, usually we leave the screen off after 5 or 10 minutes is the most reasonable.



After selecting the settings will automatically be saved.

So with just a few simple steps, we can customize the time to automatically turn off the computer screen easily. Thank you for watching the article!

You finished reading the article "**How to adjust the time to turn off the screen Win 10**" edited by the [TipsMake](#) team. We hope this article has provided you with many useful tech tips and tricks. You can search for similar articles on tips and guides. Thank you for reading and for following us regularly.