

# How to adjust the Sidebar on Microsoft Edge

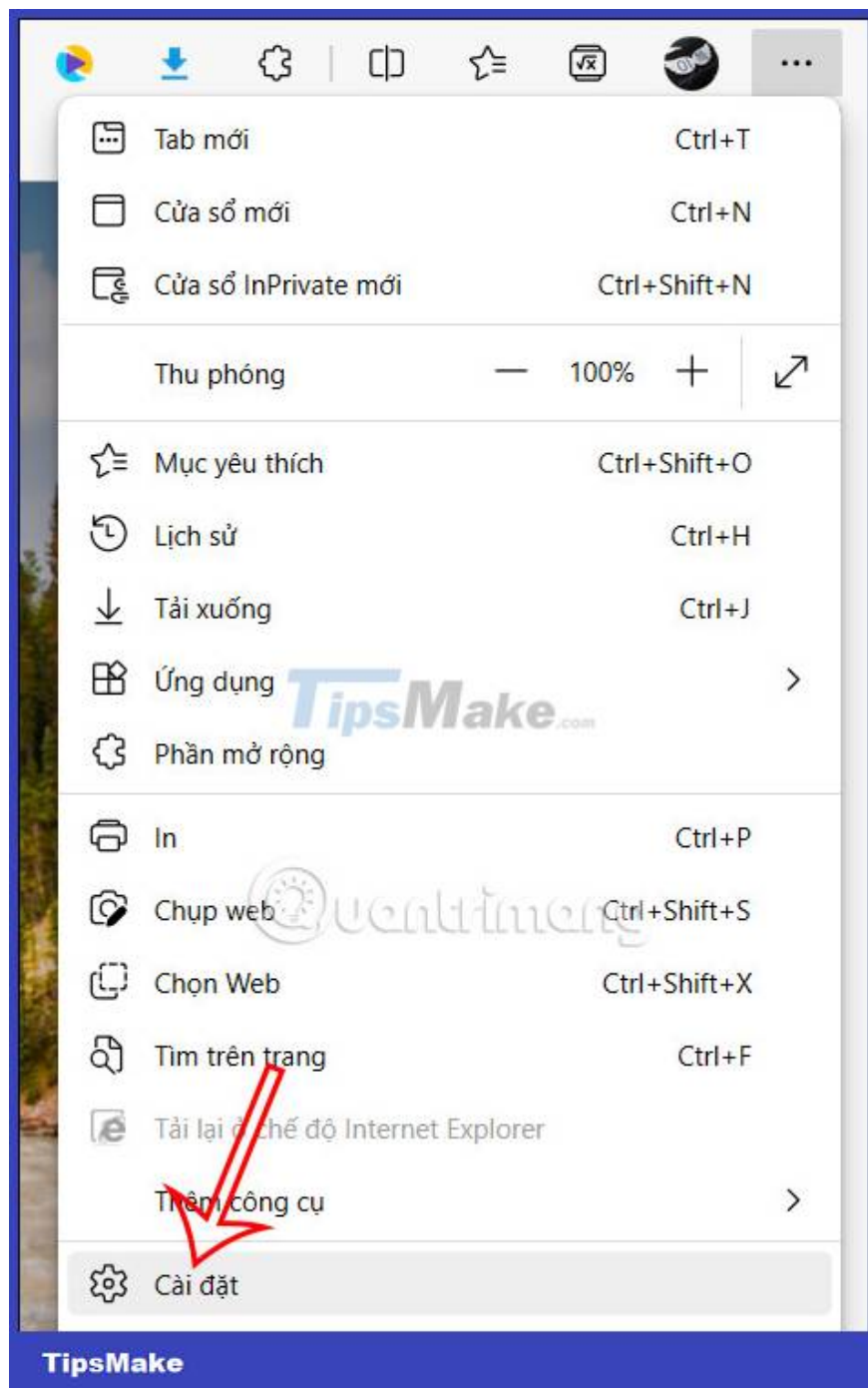
The Microsoft Edge Sidebar is on the right side of the interface, displaying the tools and applications supported on the browser. The following article will guide you to adjust the Microsoft Edge Sidebar.

The Microsoft Edge Sidebar is on the right side of the interface, displaying the tools and applications supported on the browser. For example, you can immediately activate the Drop tool to transfer files on Microsoft Edge between devices, create AI images on Microsoft Edge via Bing A tool, . And to use the Sidebar effectively, you can customize change to your liking. The following article will guide you to adjust the Microsoft Edge Sidebar.

## How to enable the sidebar on Microsoft Edge

### Step 1:

At the interface on the Edge browser, users click on **the 3 dots icon** and then select **Settings** in the displayed list.



## Step 2:

Switching to the new interface, users click on **the Sidebar item** to adjust the sidebar on the browser.

# Cài đặt

🔍 Tìm kiếm trong cài đặt

📁 Hồ sơ

🔒 Quyền riêng tư, tìm kiếm và dịch vụ

🗣️ Giao diện

📄 Thanh bên

📄  Đặt đầu nhà riêng và các tab mới

📄 Chia sẻ, sao chép và dán

📄 Cookie và quyền truy cập site

📄 Trình duyệt mặc định

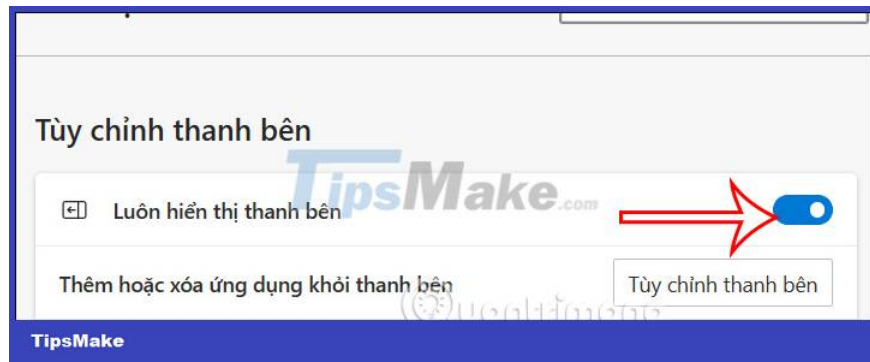
↓ Nội dung tải xuống

👤 An toàn gia đình

🗣️ Ngôn ngữ

TipsMake

Looking at the content next to it, you will **activate the Always show sidebar mode** to use.

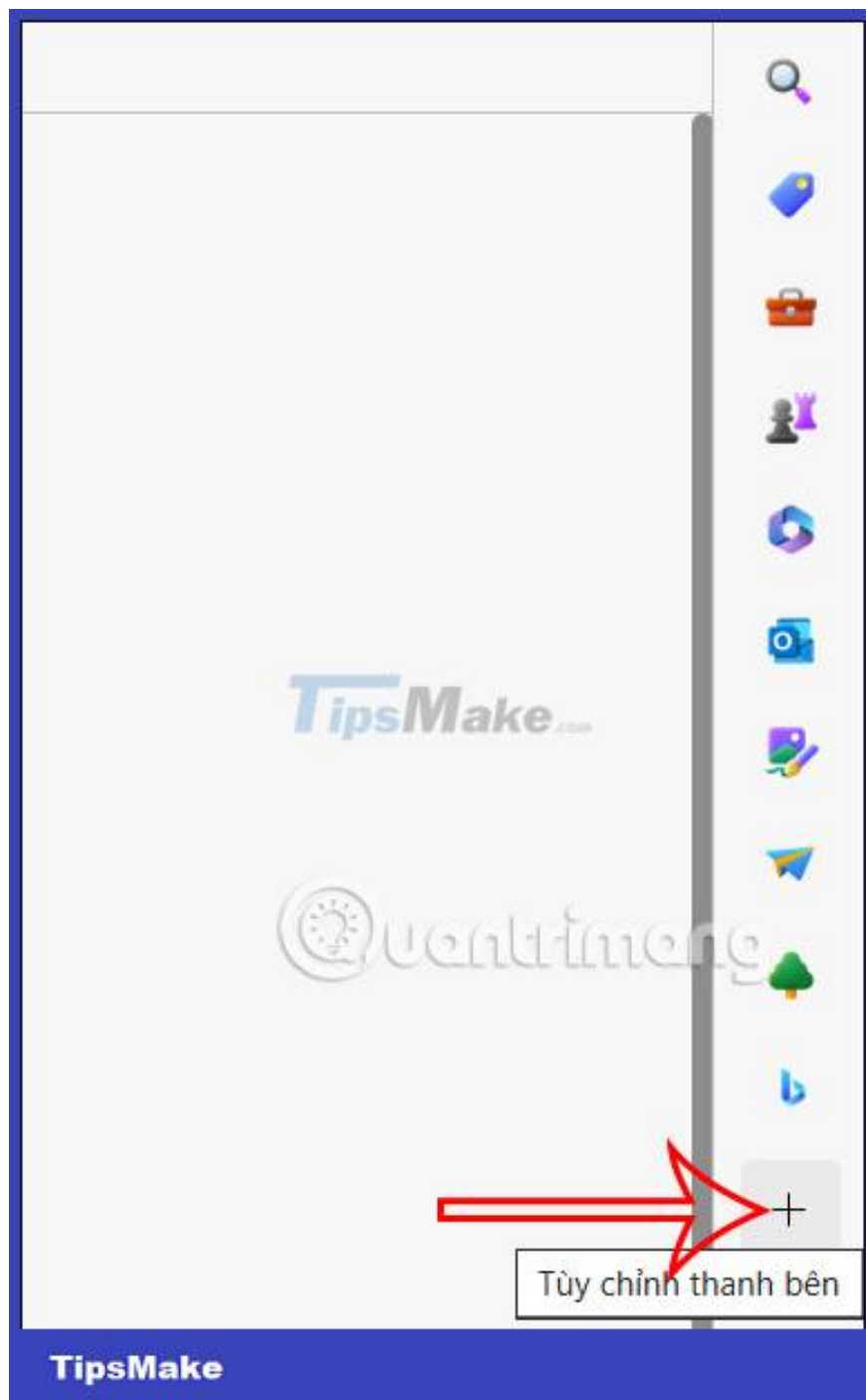


## How to adjust the sidebar on Microsoft Edge

### Add apps to the sidebar on Microsoft Edge

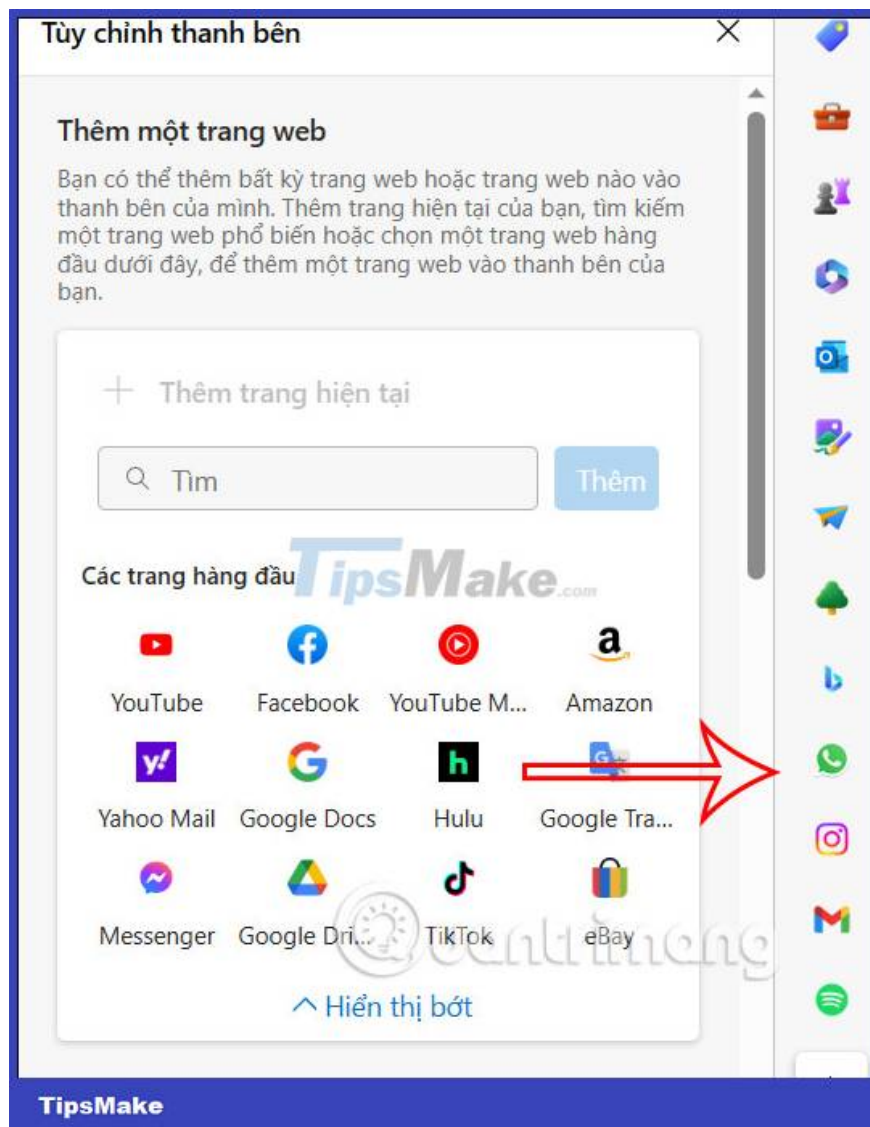
#### Step 1:

First, you can add your favorite apps to the sidebar. At the sidebar, we click on **the plus icon** .



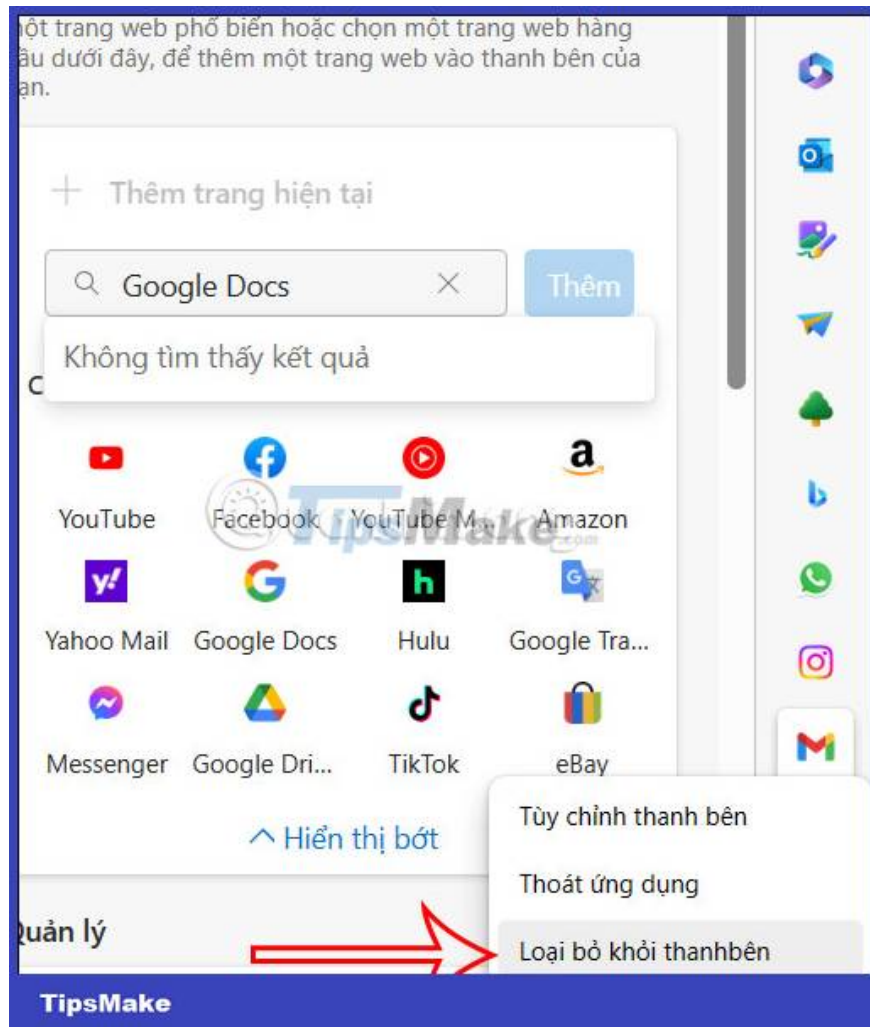
**Step 2:**

Now you see **application icons** to add to the sidebar if needed. We just need to **click on the application icon** to add it.



### Step 3:

If you want to **remove the application from the sidebar** , right-click the application icon and select **Remove from sidebar** .

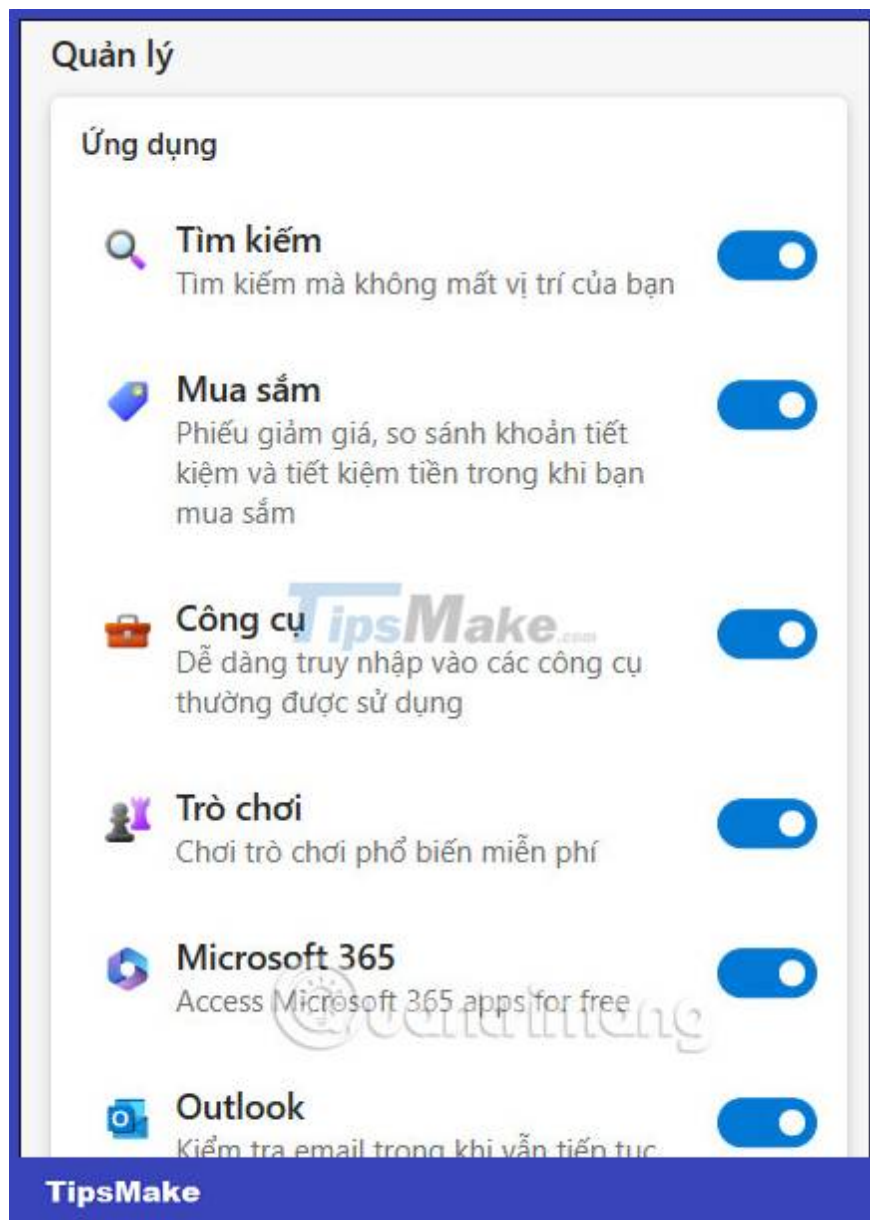


## How to manage apps in the sidebar on Edge

After installing the application and the website that displays the sidebar on Microsoft Edge, we can adjust them in the same interface.

### Step 1:

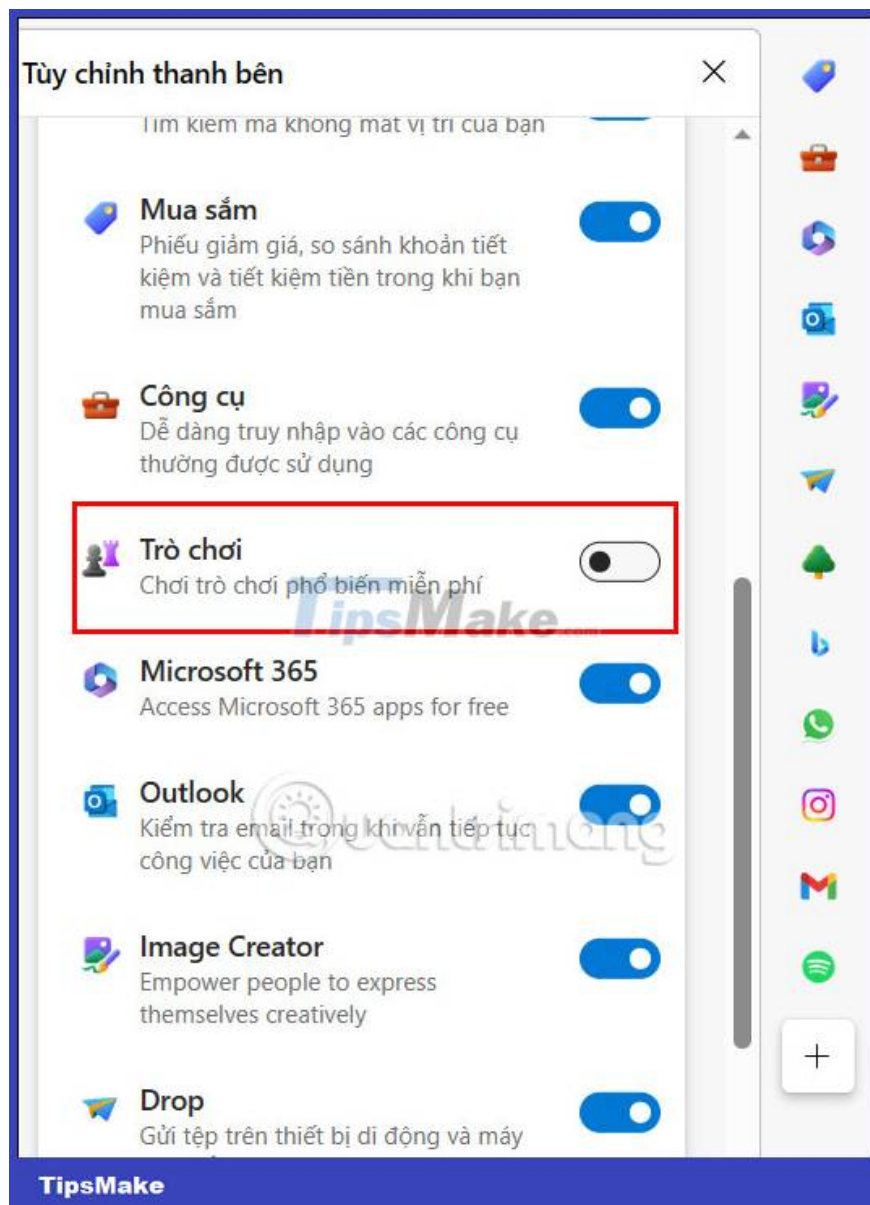
Users also click on **the plus icon**, then scroll down to see the Manage section with **the Applications** available on the browser and the website you just added.



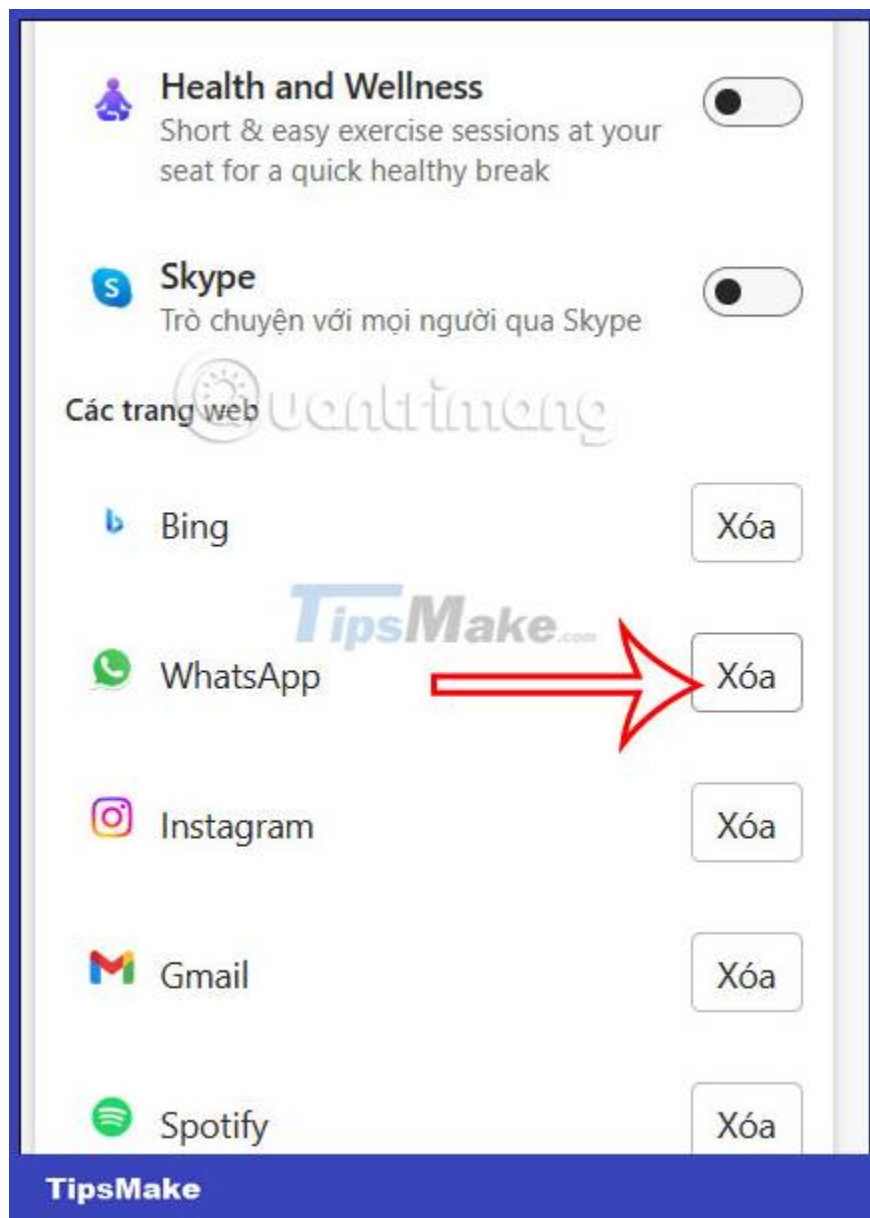
## Step 2:

Now you scroll down to each item and select which applications you want to hide from the sidebar on the browser, then move the circle button to the left.

As soon as you exit you close the application, the application is not displayed in the sidebar anymore.



With the website that you add to the sidebar, we just need **to click Delete** to remove it from the sidebar. Soon the site was also removed from the sidebar on the browser.



You finished reading the article "**How to adjust the Sidebar on Microsoft Edge**" edited by the [TipsMake](#) team. We hope this article has provided you with many useful tech tips and tricks. You can search for similar articles on tips and guides. Thank you for reading and for following us regularly.