

# How to adjust the Canon 2900 printer in dark and light ink

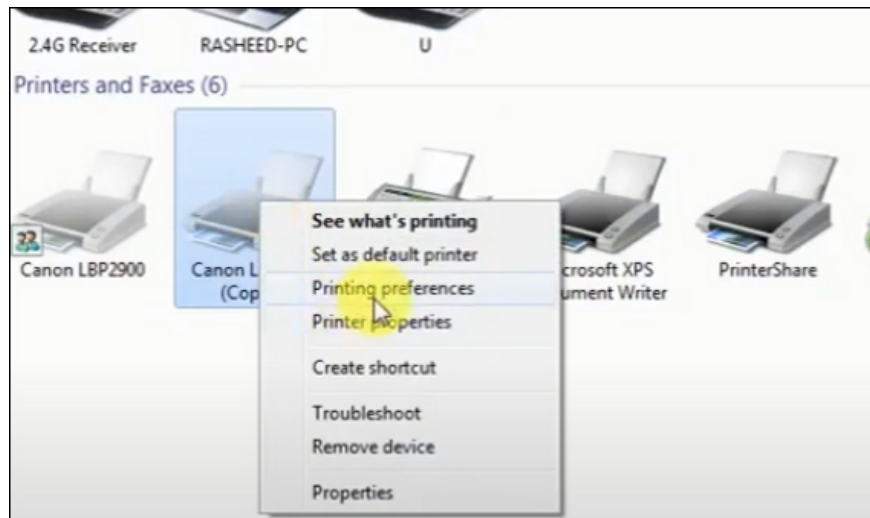
By default, every printer will set the ink level just right, neither too dark nor too light. However, sometimes you also want your print to be darker, or adjust the color lighter, you can also change the Canon 2900 ink mode at will.

The printout will then be in a darker color than usual or be lighter. The following article will guide you to change the density level of Canon 2900 printer.

## Canon 2900 printer ink color correction guide

### Step 1:

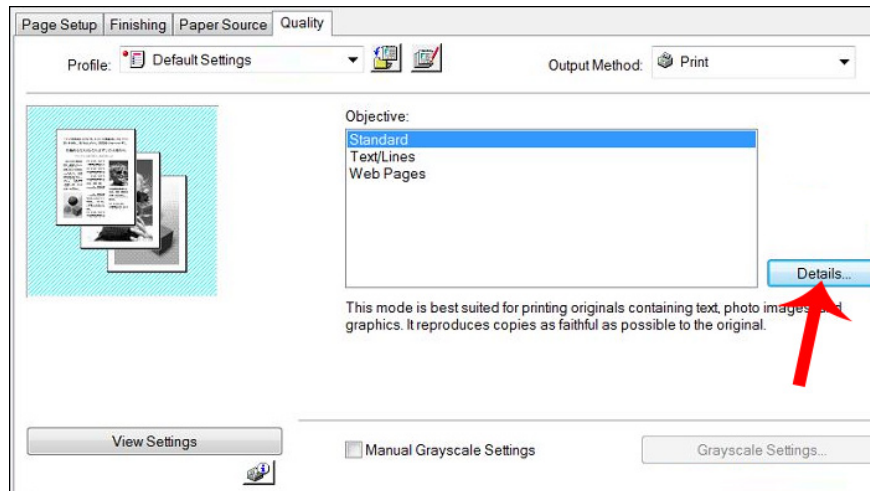
First you access the **Control Panel** and select **Devices and Printers** . Next find **the Canon 2900 printer** want to adjust the density level and then right click, select **Printing Preferences** .



### Step 2:

Then display a new interface, the user click the **Quality tab** and then look down **the Objective section**, select **Standard** and click **Details** as shown below.

1. [Common printer errors and how to fix them](#)

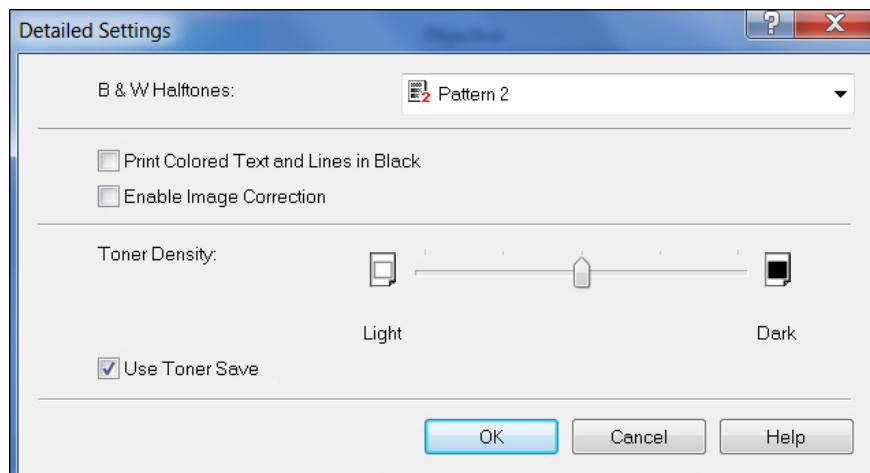


### Step 3:

Now display the dialog interface for us to **adjust the density level for printer ink in the Toner Density bar** . If pulled towards Light, the ink will fade. If pulled towards Dark more, the ink will increase the density.

In case you want to save toner, select Use Toner Save. In addition, there will be 2 parts to set the print color:

1. Printer color text and lines in black: Frame lines in the text will be darker.
2. Enable image Correction: Prints a darker image or logo.



You finished reading the article "**How to adjust the Canon 2900 printer in dark and light ink**" edited by the [TipsMake](#) team. We hope this article has provided you with many useful tech tips and tricks. You can search for similar articles on tips and guides. Thank you for reading and for following us regularly.