

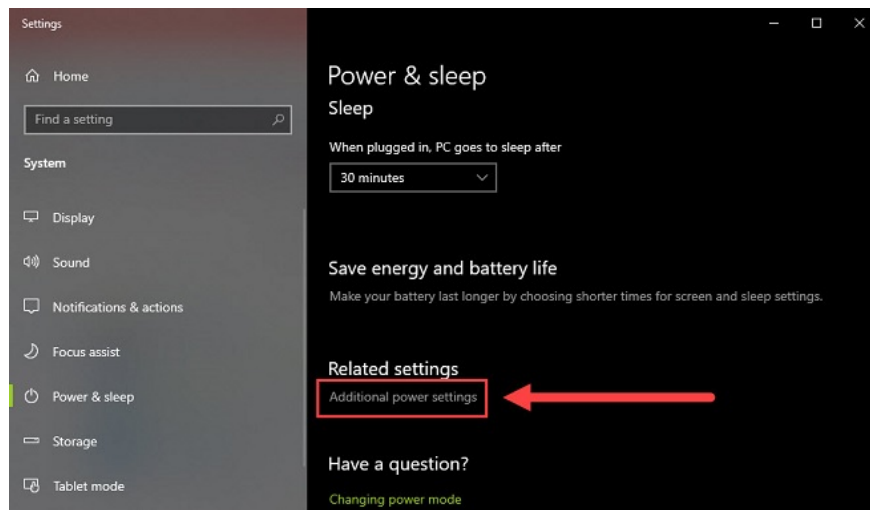
How to adjust Power Option on Windows 10 for the most efficient operation

Regardless of what you are using your computer for, you want it to always run at peak performance. To achieve that, you need a little bit of tweaking to change the equilibrium state of Power Options. That is what we talk about in this article.

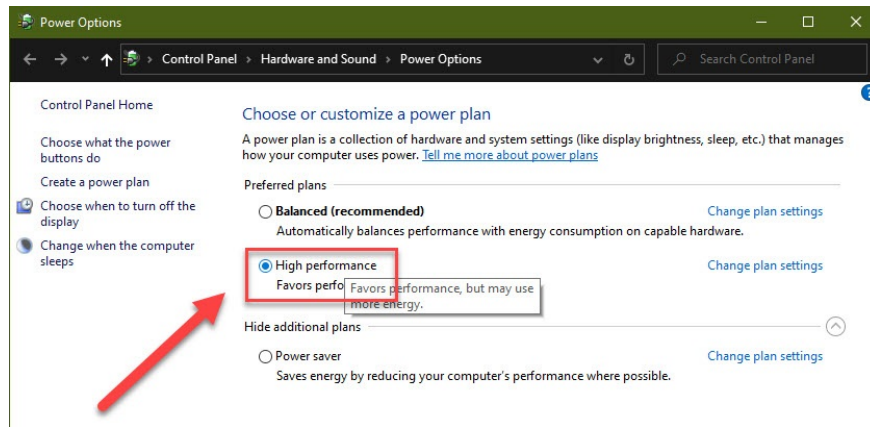
While the balanced performance is good for many activities, it can cause delays for more demanding tasks like editing audio, video, and large files. Such high-data computations might require a higher level of performance in Power Options settings.

The Power Option changes you are about to make below are not in the Settings app, but are hidden in the Control Panel. Accessing this setting is very simple, just press **Windows + X** , then select **Power Options** in the menu that pops up.

Scroll down and open **Additional power settings** .

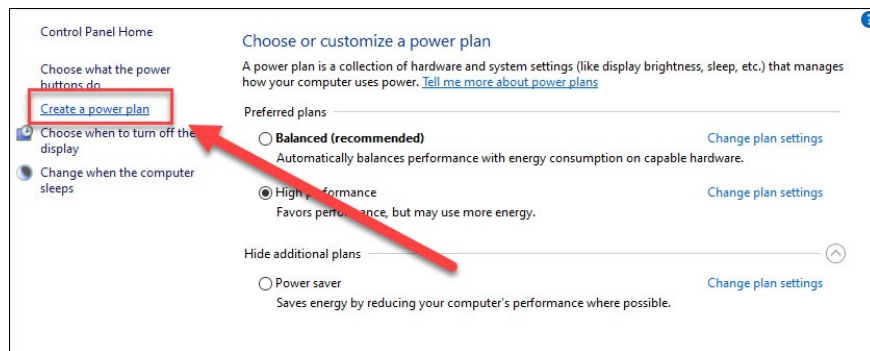


Depending on your computer, you will see several types of preset settings (balance, high performance, power saver - save). If the computer is already available, just switch to **High performance** .

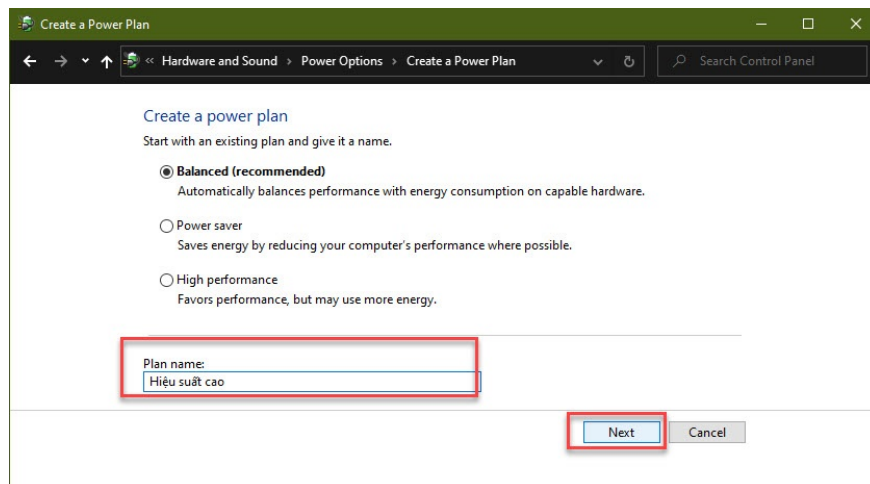


At this point you can stop reading the article and experience the higher performance of your computer.

However, in case you do not have High Performance available or want to install more yourself, choose **Create a power plan** .

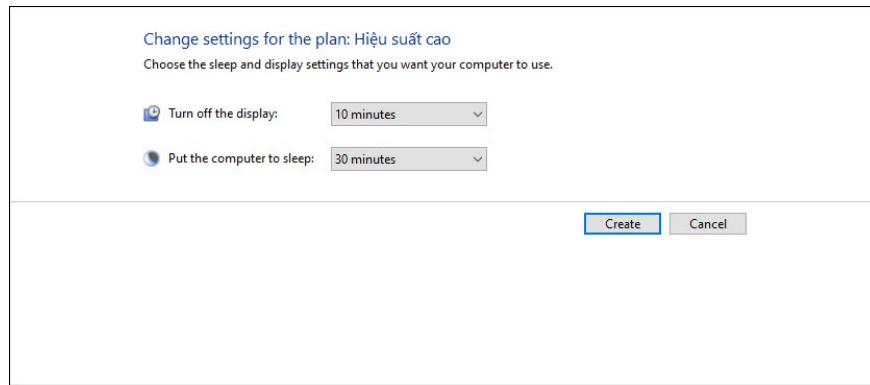


Name the plan any name and click **Next** .

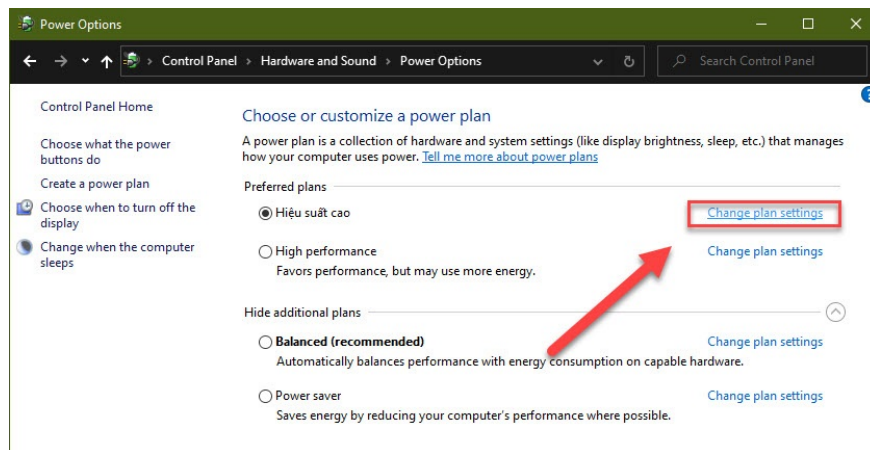


Here you can choose your desired timeout:

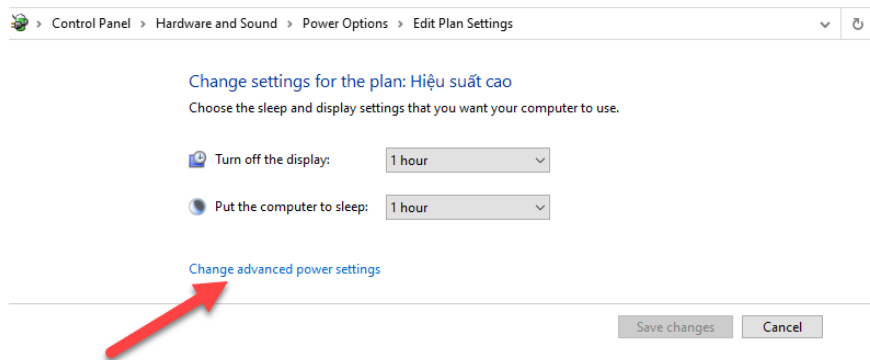
1. Turn off the display: Turn off the screen.
2. Put the computer to sleep: Enter sleep mode.



After you have created a new plan, click **Change plan settings** next to it.

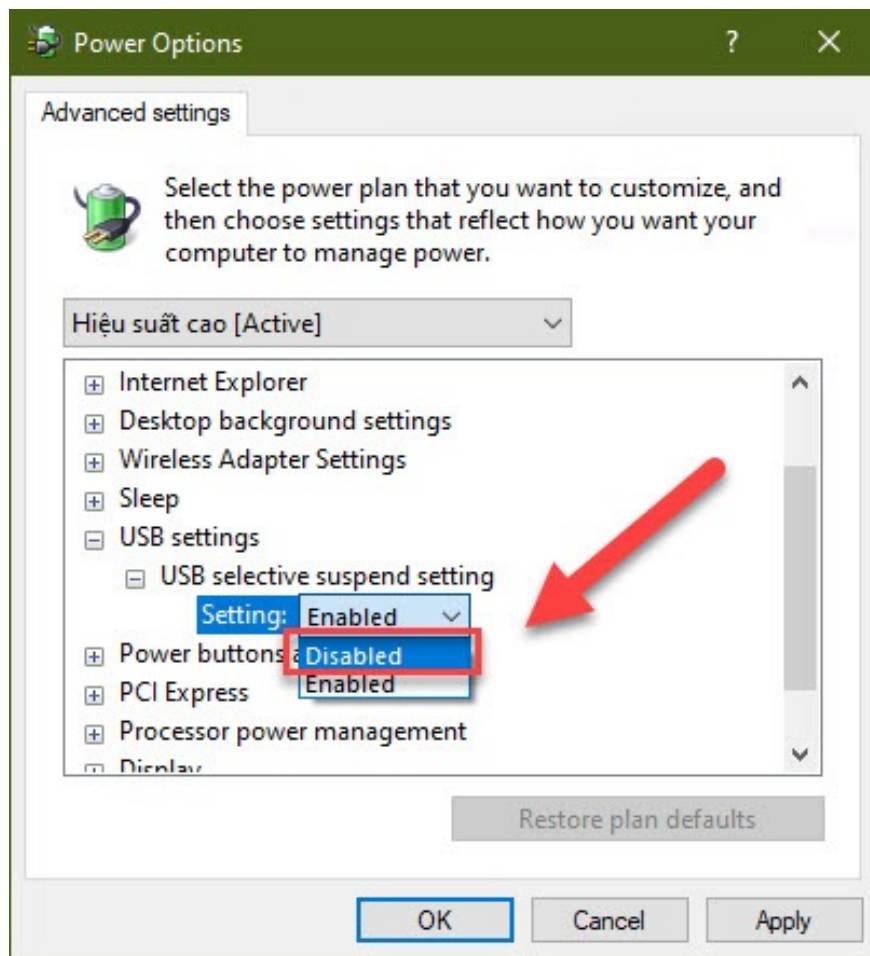


Continue with **Change advanced power settings** .

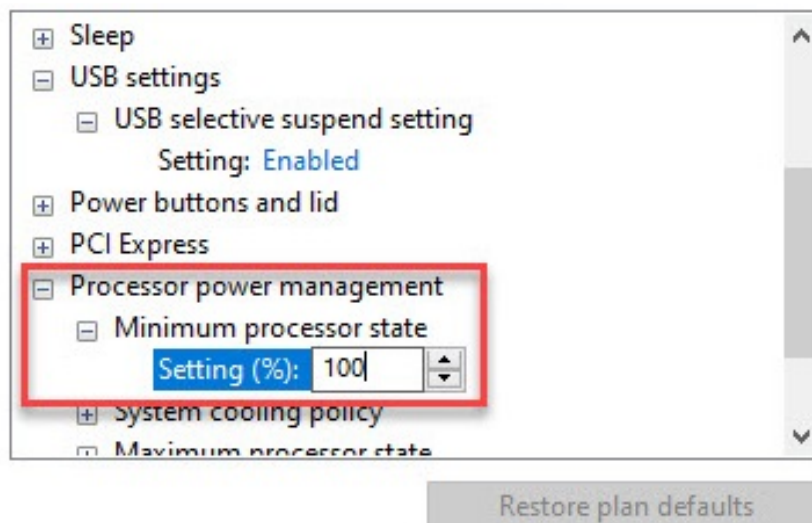


Here, do some of the following settings:

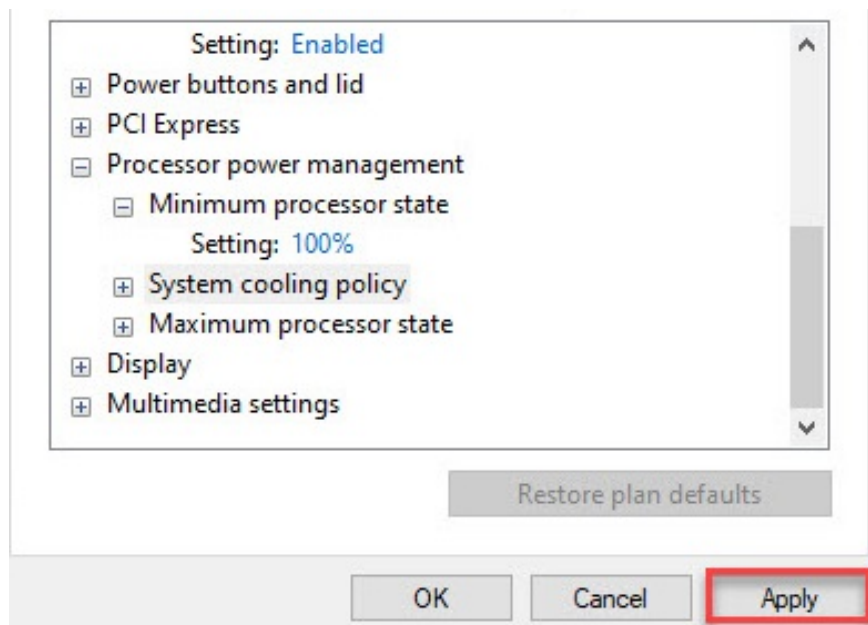
USB settings> USB selective suspend settings: **Disabled** .



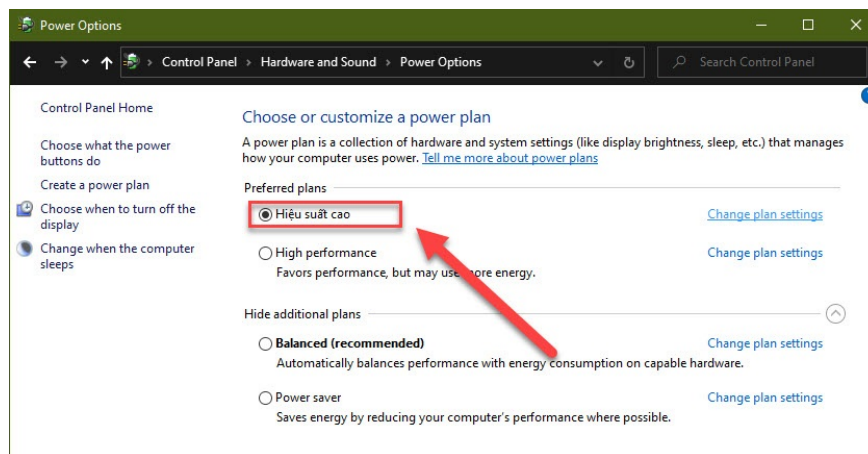
Processor power management > Minimum processor state: **100** .



After the setup is complete, click **Apply** to save the changes and **OK** exits the window.



Finally, remember to select the plan you just created in **Choose or customize a power plan** .



If you have trouble when your computer is running slowly, error processing heavy data, the Power Options settings will somewhat improve that.

Good luck!

You finished reading the article "**How to adjust Power Option on Windows 10 for the most efficient operation**" edited by the [TipsMake](#) team. We hope this article has provided you with many useful tech tips and tricks. You can search for similar articles on tips and guides. Thank you for reading and for following us regularly.