

# How to adjust mouse speed on Windows 10, 8, and 7 computers.

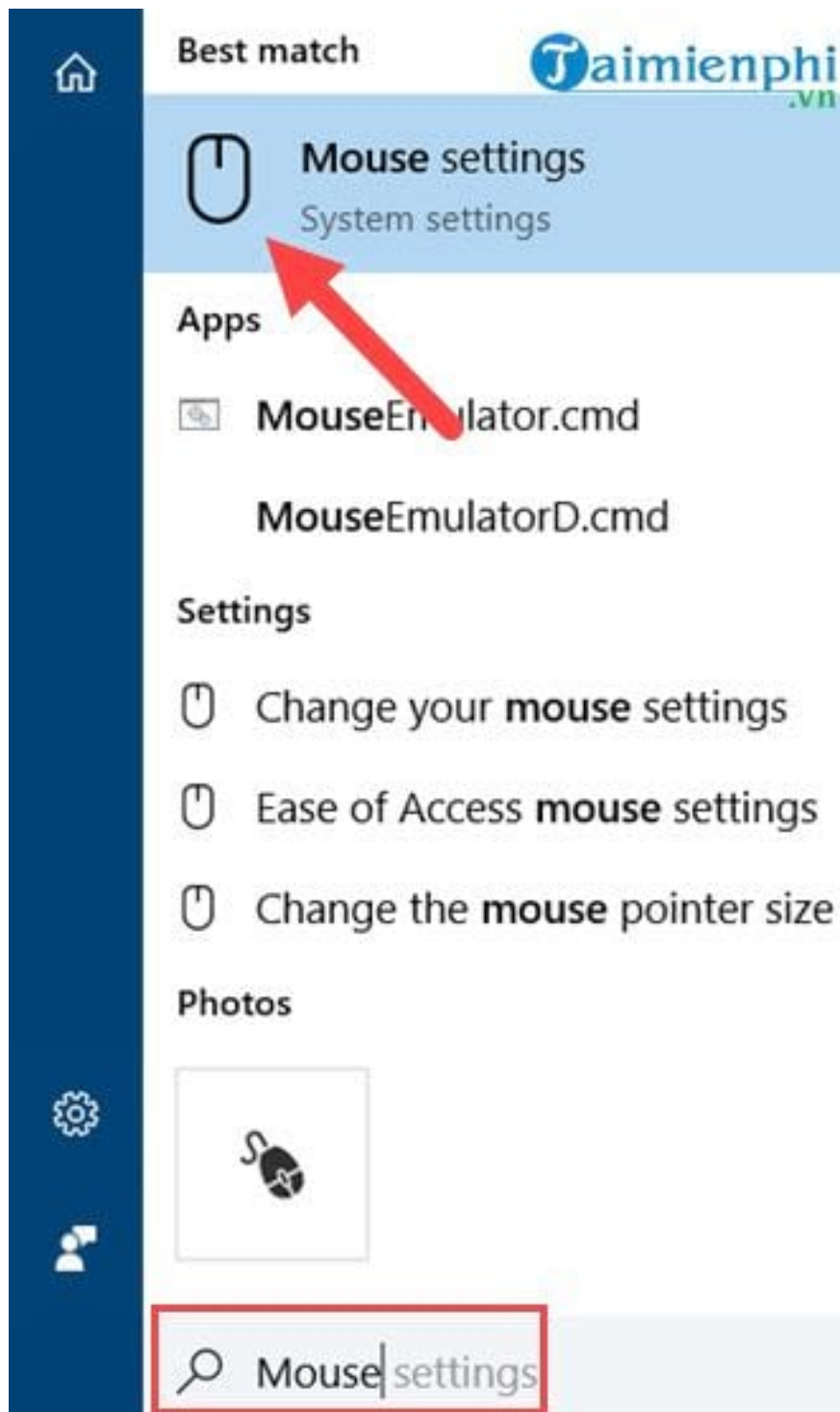
Moving your mouse too fast or too slow can affect your work. The following guide on adjusting mouse speed for Windows 10, 8, and 7 will help you reconfigure your mouse on any popular Windows operating system.

In this article, TipsMake will guide you on how to **adjust the mouse speed on Windows 10, 8, and 7**, the most popular operating systems today. As you know, computers have many supported peripherals and we can configure them for optimal work efficiency, including the mouse and keyboard. If your mouse moves too fast, it's unusable, and if it moves too slowly, it's also unproductive.

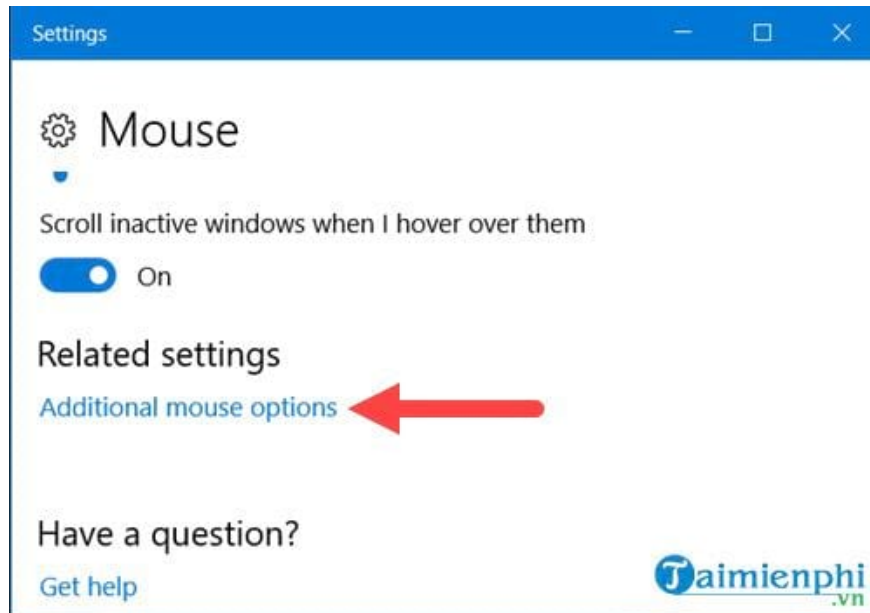


Similarly, configuring the mouse for left-handed users is an essential part of setting up a computer mouse. This shows that Windows is quite considerate of its users and aims to provide the most comfortable experience regardless of how the user uses the mouse. Whether it's **configuring the mouse for left-handed** or right-handed users, or any other feature, let's put that aside for now and delve into the detailed instructions for adjusting mouse speed on Windows 10, 8, and 7.

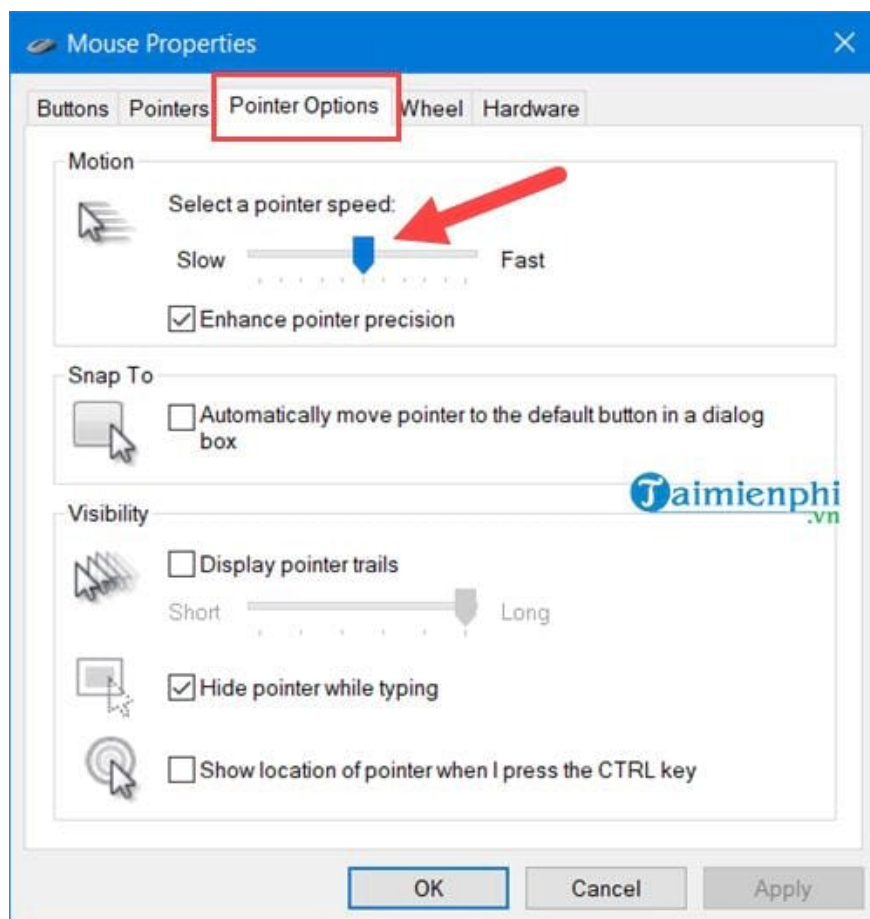
*Step 1:* Open the Start Menu, then search for Mouse Settings and access the search result.



*Step 2:* Here, scroll down to the Related settings section and select Additional mouse options.

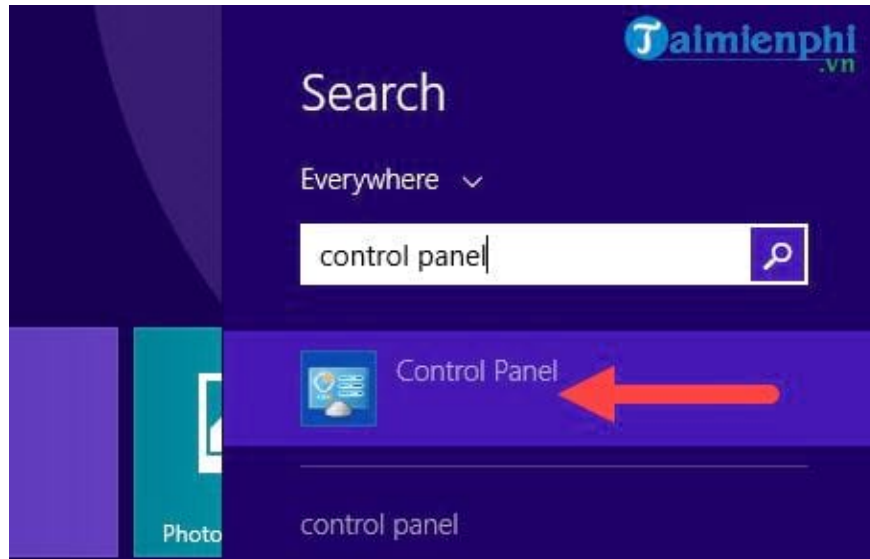


Step 3: In Mouse Properties, simply adjust the Motion section. This is where you adjust the mouse speed, with Slow for slow and Fast for fast.



### Adjusting mouse speed on Windows 8

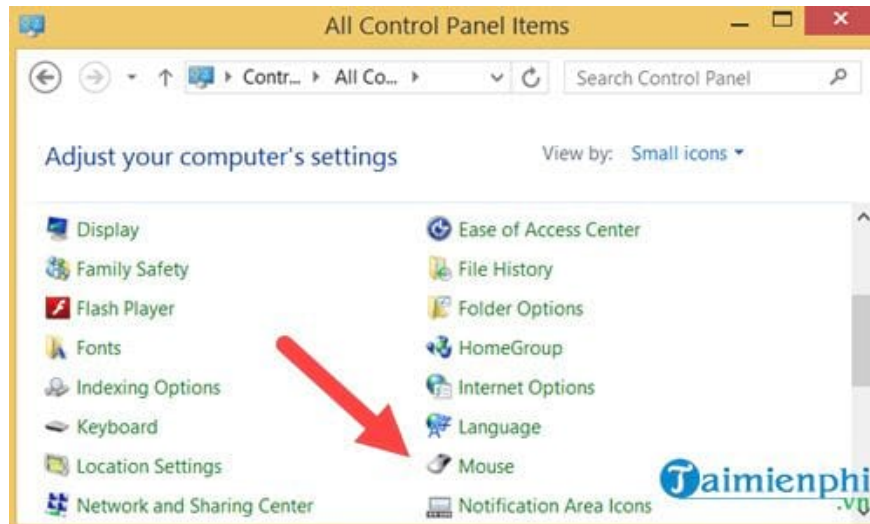
Step 1: Press Windows, then type "**Control Panel**" in the search bar and access the search result.



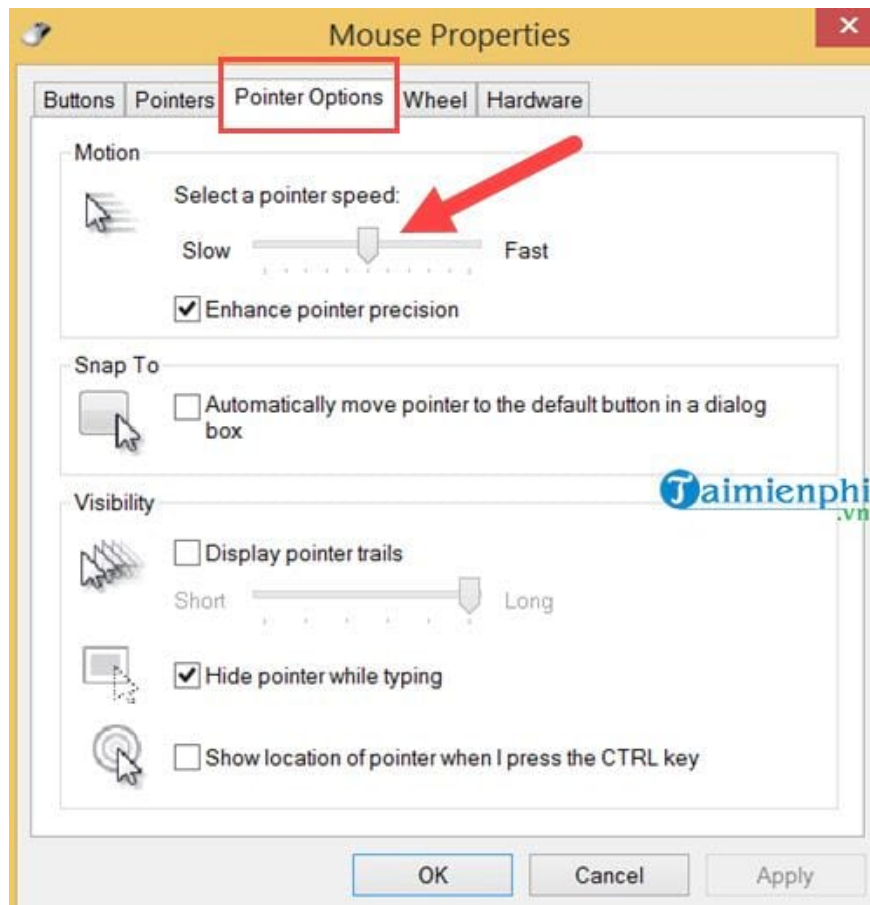
Step 2: In the Control Panel, set the mode to **View by Small icons** .



Step 3: Then select **Mouse** to adjust the computer mouse speed.

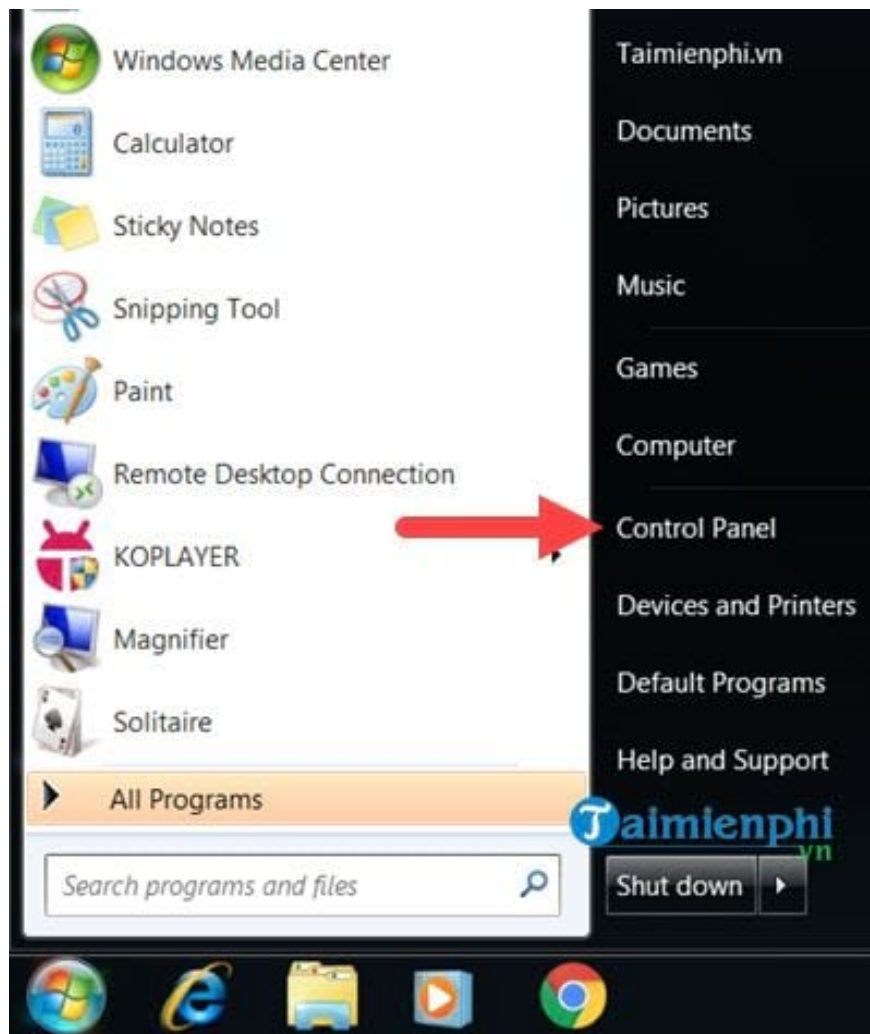


*Step 4:* In Mouse Properties, simply adjust the Motion setting; this is where you adjust the mouse speed, similar to how it works in Windows 10.

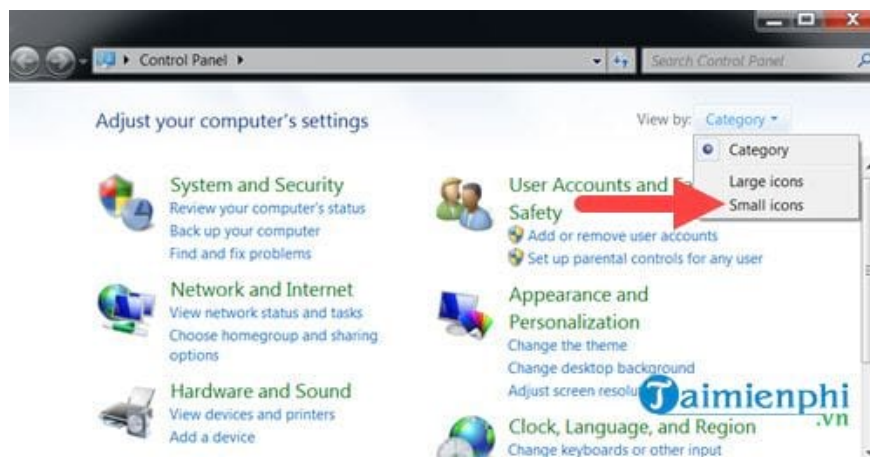


### Adjusting mouse speed on Windows 7

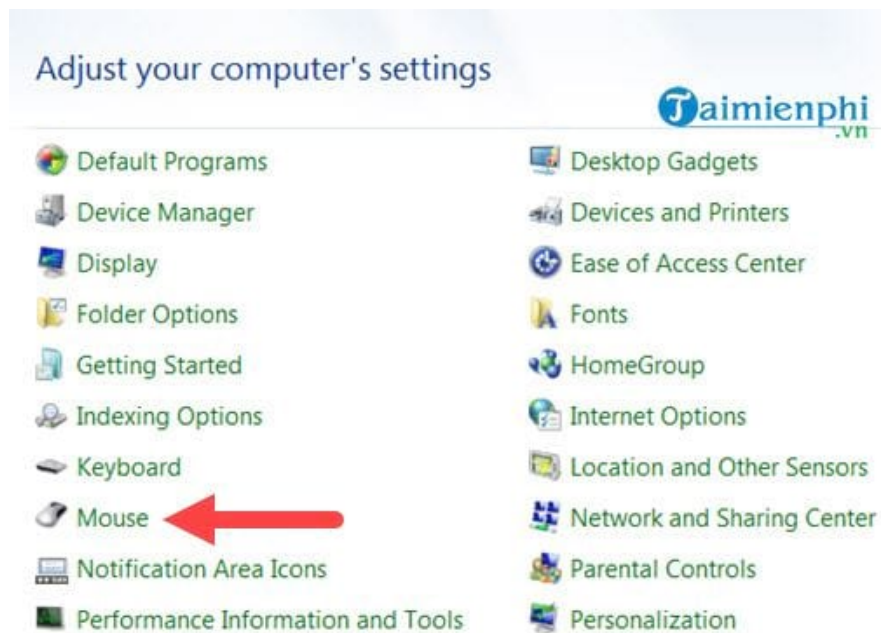
*Step 1:* Open the Start Menu and then access the Control Panel.



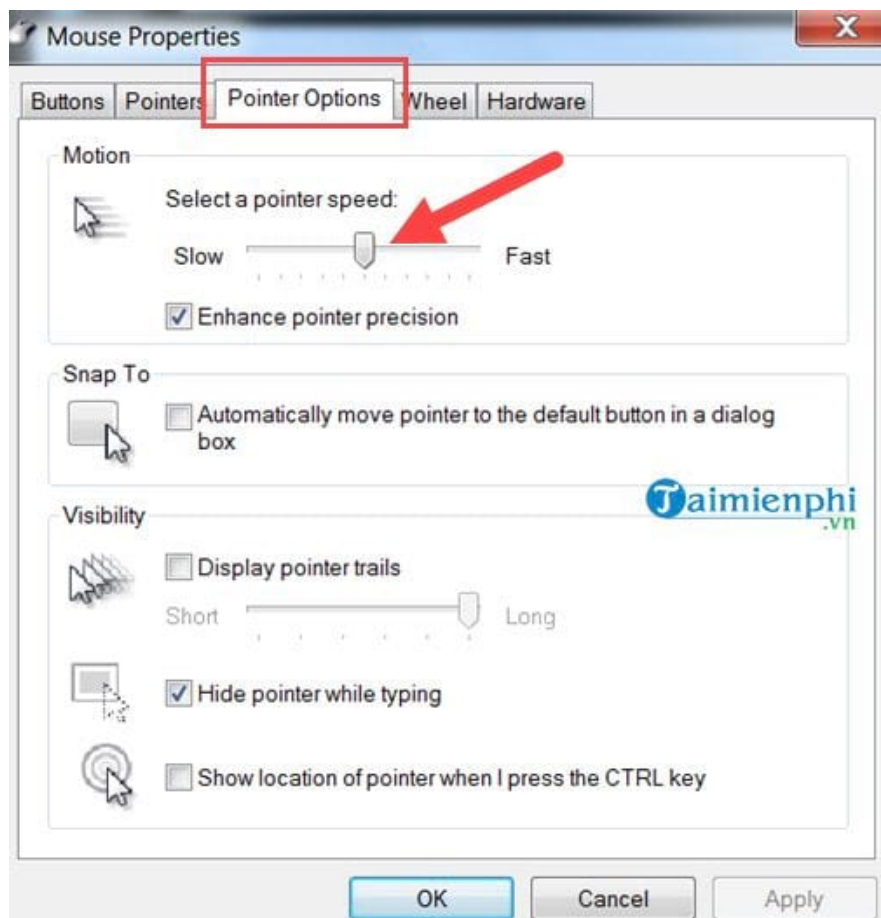
Step 2: In the Control Panel, set the mode to **View by Small icons** .



Step 3: Then select **Mouse** to adjust the computer mouse speed.



*Step 4:* In Mouse Properties, simply adjust the Motion setting. This is where you adjust the mouse speed, similar to how it works in Windows 10 and Windows 8.



Nowadays, with high-end or gaming mice, adjusting mouse speed isn't as important because they come with optimization software offering various functions. However, this isn't the case with regular mice. Therefore, knowing how to adjust mouse speed on Windows 10, 8, and 7 is essential for effective and proficient computer

use.

That's about adjusting the mouse speed, but what about the keyboard? What do you do when your keyboard is typing garbled characters or jumping around for no apparent reason? Don't worry, TipsMake always has solutions to help you deal with this problem. Check out our guide on **fixing keyboard typing errors** to see if this trick helps you.

You finished reading the article "**How to adjust mouse speed on Windows 10, 8, and 7 computers.**" edited by the [TipsMake](#) team. We hope this article has provided you with many useful tech tips and tricks. You can search for similar articles on tips and guides. Thank you for reading and for following us regularly.