

# How to adjust laptop battery life after using time

Over time, the battery life becomes less and less, along with the management circuit of the battery capacity will be worse and not receive the actual battery capacity. So how to improve and increase the amount of battery life on a laptop? Please refer to the following procedure.

**There is virtually no specific method to extend laptop battery life. When you first buy the device, outside the laptop will detail the specific battery life, but this is only true in the manufacturer's test environment, and in fact it is hardly.**

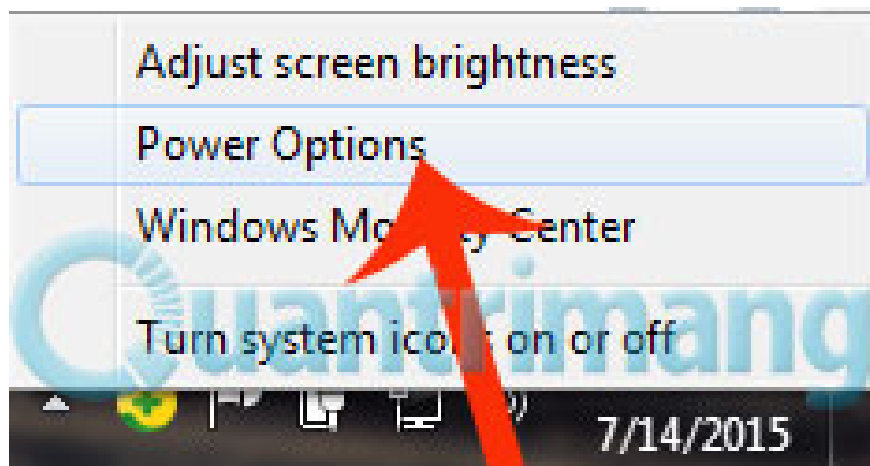
Over time, the battery life becomes less and less, along with the management circuit of the battery capacity will be worse and not receive the actual battery capacity. So how to improve and increase the amount of battery life on a laptop? Please refer to the following procedure.

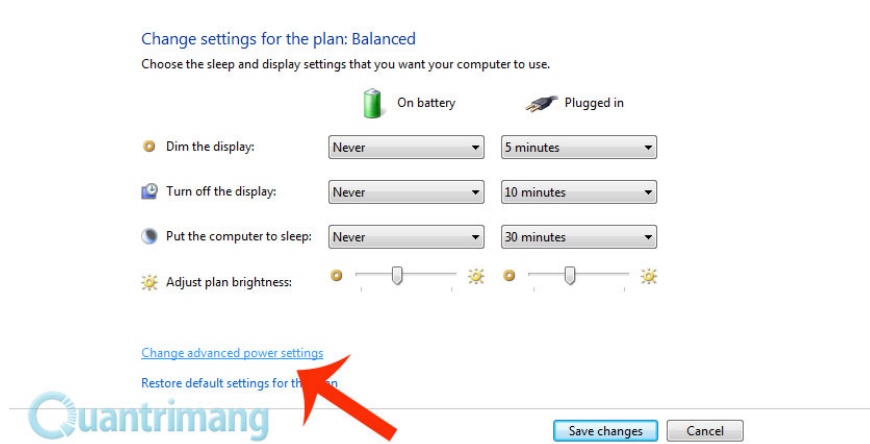
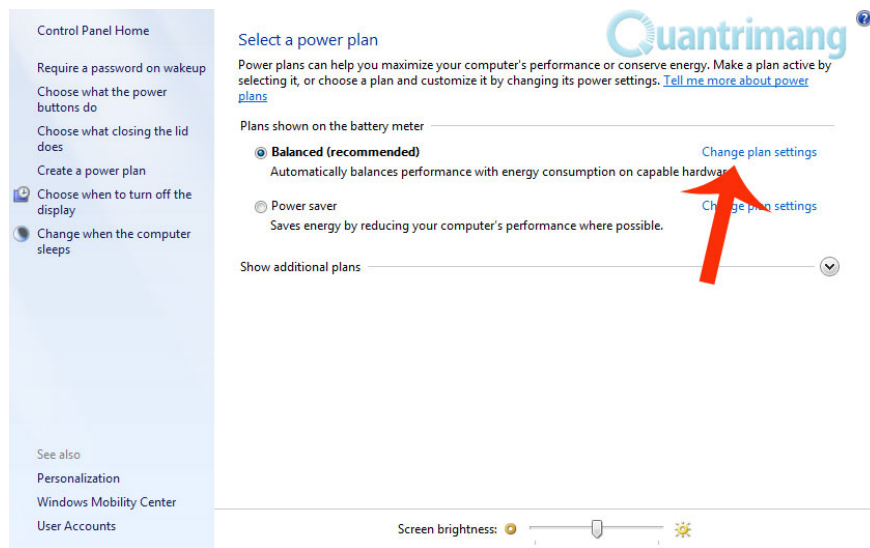
## Charge

First you need to fully charge your laptop battery. When the battery capacity reaches 100%, disconnect the charger cable, then turn it off and leave it there for a few hours to allow the laptop to cool. Because if you continue to use, the temperature will cause the system not to display properly with the battery life of the device.

## Battery setting

Find the **Power Options** option on Windows and click the **Change plan settings ( Balanced) link** . At the Balanced settings window, click on the **Edit plan settings option** , then navigate to the Custom **battery group** and set the **Never** option to all options.

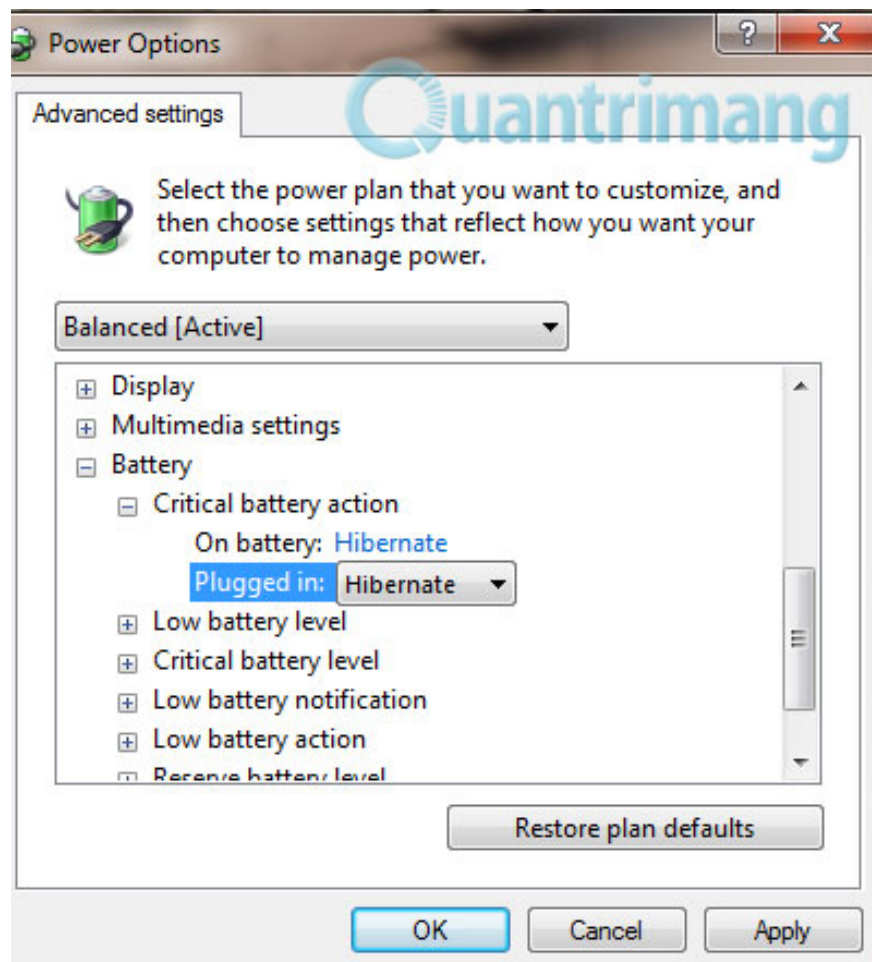




Then click on the **Change advanced power settings** link to go to the next setup step

## Setting hibernation time (Hibernation Point)

Do you want your laptop to work longer if possible when using the battery? Look for options in **Power Options** and make sure the **Hibernate** feature is enabled. Now find the **Low battery action option** and set all **Nothing to it** , followed by a **5%** option in the **Critical battery level section**.



## Proceed to discharge the battery and recharge it

After the settings in the **Power Options** settings, click **Save changes** in the **Plan settings** window to save the settings. Now proceed to discharge the battery by using it normally until the battery runs out or leave it for the self-discharge device. If you set everything up correctly, the laptop will go into hibernation when the battery life is **5%** correct. The laptop screen will not turn off and the system will not switch to Sleep mode as usual.





Now all you need to do after discharging the battery is plug the laptop into the charger and wait until it is **100%** charged. Usually charging time will last about **05 hours** , or you can leave overnight charge the best. While charging, you can still use the laptop normally

## Set back

After you have completed the above steps, please change the battery settings to your liking. You can set **Sleep mode** after 10 minutes of no use to help preserve battery life or other modes as you like.

### Change settings for the plan: Balanced

Choose the sleep and display settings that you want your computer to use.

	 On battery	 Plugged in
Dim the display:	10 minutes	5 minutes
Turn off the display:	15 minutes	10 minutes
Put the computer to sleep:	30 minutes	30 minutes
Adjust plan brightness:		

[Change advanced power settings](#)

[Restore default settings for this plan](#)



Save changes

Cancel

## Conclusion

Above is a way to help users proceed to adjust the battery life after using time. You should do this every 1-2 months to keep the battery life on your laptop in the best state and for a long time.

You finished reading the article "**How to adjust laptop battery life after using time**" edited by the [TipsMake](#) team. We hope this article has provided you with many useful tech tips and tricks. You can search for similar articles on tips and guides. Thank you for reading and for following us regularly.