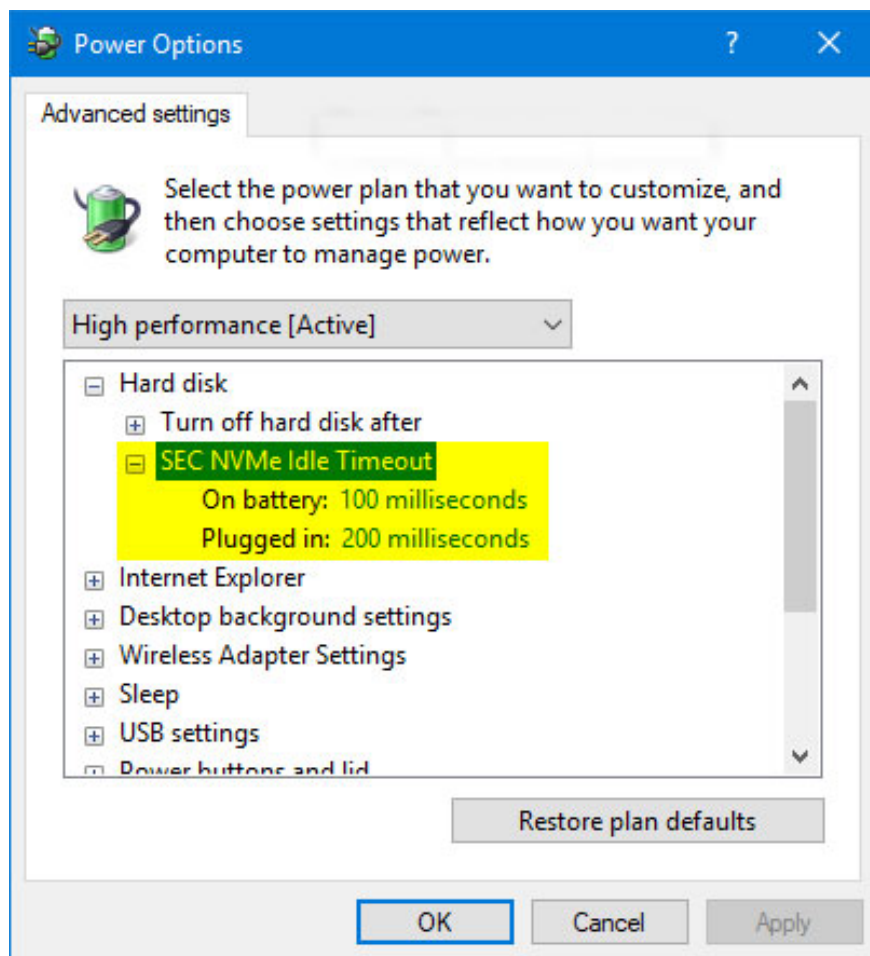


How to add or remove 'SEC NVMe Idle Timeout' from Power Options in Windows 10

Installing SEC NVMe Idle Timeout in Power Options allows users to set it to turn off the NVMe device after a specified period of inactivity, in milliseconds.

In Windows 10 Creators Update version 1703 (build 15063) and above, installing SEC NVMe Idle Timeout in Power Options allows users to set to turn off the NVMe device after a specified period of inactivity, in units milliseconds.

By default, SEC NVMe Idle Timeout is set to 100 milliseconds **on battery** and 200 milliseconds if **plugged in** .



This tutorial will show you how to add or remove SEC NVMe Idle Timeout settings in Power Options for all users in Windows 10.

Note : You must be logged in as an administrator to add or remove this setting in Power Options.

Method 1: Add or remove "SEC NVMe Idle Timeout" in Power Options using Command Prompt

1. Open Command Prompt.
2. Enter 1 of the 2 commands you want below into the Command Prompt with admin rights and press Enter .

To add SEC NVMe Idle Timeout:

```
powercfg -attributes SUB_DISK 6b013a00-f775-4d61-9036-a62f7e7a6a5b -ATTRIB_HIDE
```

Or delete SEC NVMe Idle Timeout by default:

```
powercfg -attributes SUB_DISK 6b013a00-f775-4d61-9036-a62f7e7a6a5b +ATTRIB_HIDE
```

3. You can now close the Command Prompt with admin rights if desired.

Method 2: Add or remove "SEC NVMe Idle Timeout" in Power Options with REG file

The downloaded .reg files below will modify the DWORD value in the registry key.

```
HKEY_LOCAL_MACHINESYSTEMCurrentControlSetControlPowerPowerSettings012ee47-9041-4
```

1. Follow step 2 (to add) or step 3 (to delete) below for what you want to do.
2. To add "SEC NVMe Idle Timeout" to Power Options
 - A) Download the Add_SEC_NVMEe_Idle_Timeout_to_Power_Options.reg file and go to step 4 below.

3. To remove "SEC NVMe Idle Timeout" from Power Options

This is the default setting.

- A) Download the Remove_SEC_NVMEe_Idle_Timeout_from_Power_Options.reg file and go to step 4 below.

4. Save the .reg file to the desktop.
5. Double click on the downloaded .reg file to merge it.

6. When prompted, click **Run> Yes (UAC)> Yes> OK** to approve the merge.

7. You can now delete the downloaded .reg file if you like.

Hope you are succesful.

You finished reading the article "**How to add or remove 'SEC NVMe Idle Timeout' from Power Options in Windows 10**" edited by the [TipsMake](#) team. We hope this article has provided you with many useful tech tips and tricks. You can search for similar articles on tips and guides. Thank you for reading and for following us regularly.