

# How to add or remove Control Panel from Navigation Pane on Windows 7

Windows provides a range of tools on the Control Panel so users can easily customize most settings. Suppose for some reason that you want to remove the Control Panel from the Navigation Pane, for example, so that other users cannot access and set up some custom settings on your computer, etc. In the following article, Network Administrator will show you how to remove or add Control Panel from Navigation Pane on Windows 7.

Windows provides a range of tools on the Control Panel so users can easily customize most settings. But suppose for some reason you want to remove the Control Panel from the Navigation Pane, for example, so other users can't access and set up some custom settings on your computer. In the following article, Network Administrator will show you **how to remove or add Control Panel from Navigation Pane on Windows 7**.

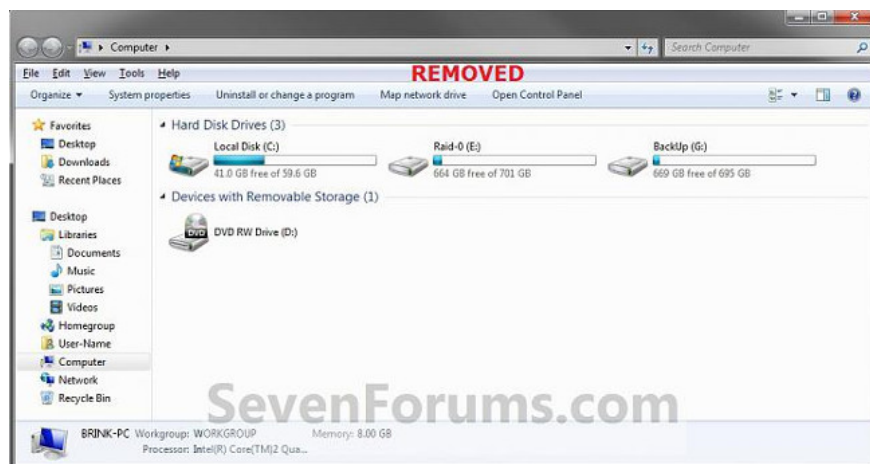
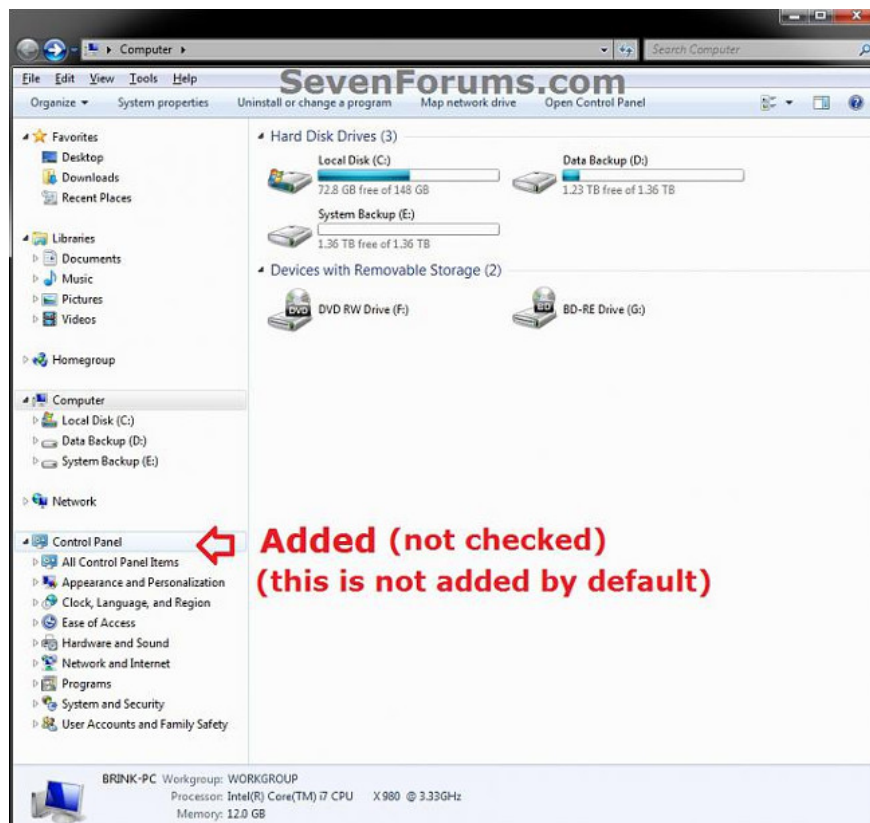
**Note:**

1. You can only perform the steps when you log in to your Admin account.
2. This process will affect all user accounts on your computer.
3. This process will add or remove the Control Panle icon on the computer.

**For example: Control Panel on Navigation Pane**

The first example is to add Control Panel, the next example is **to remove the Control Panel** from the Navigation Pane.





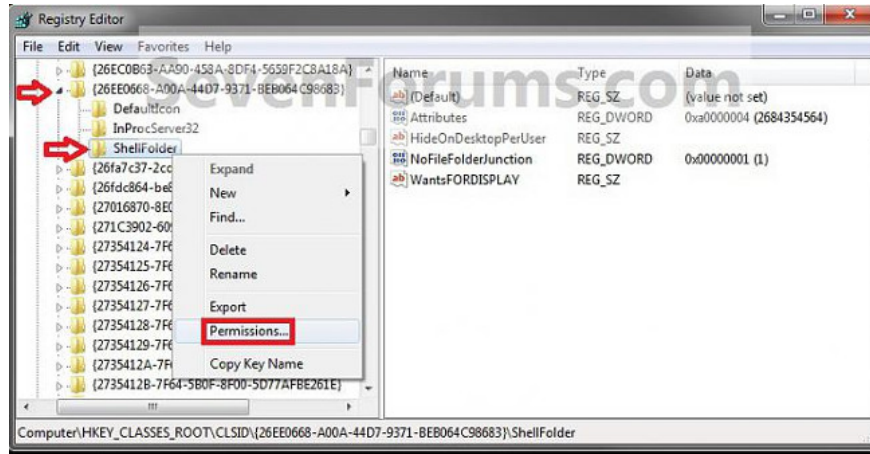
## Add or remove Control Panel from Navigation Pane on Windows 7

To add or remove the Control Panel from the Navigation Pane on Windows 7, follow the steps below:

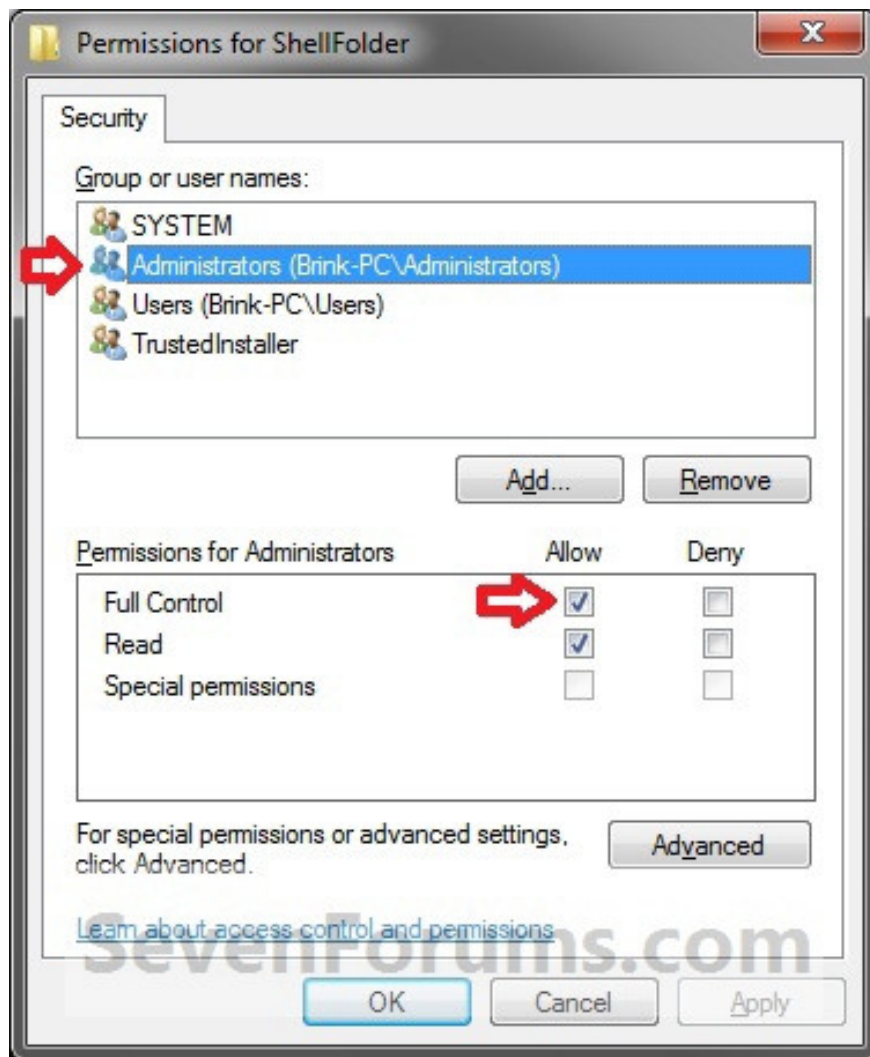
1. Open Start Menu, then enter **regedit.exe** into the Search frame and press Enter to open the Registry Editor window.
2. If the UAC window appears, click **Yes** to continue.
3. In the Registry Editor window, navigate to the key:

HKEY\_CLASSES\_ROOT\CLSID {26EE0668-A00A-44D7-9371-BEB064C98683} ShellFolder

4. Next in the left pane, right-click the **ShellFolder** key, then click **Permissions** .



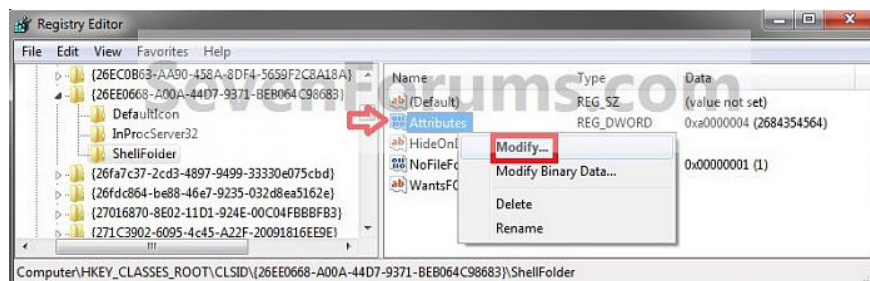
5. Next in the top corner, select **Administrators** . Under Permissions for Administrators, select **Allow** for the **Full Control** option, then click **OK** .

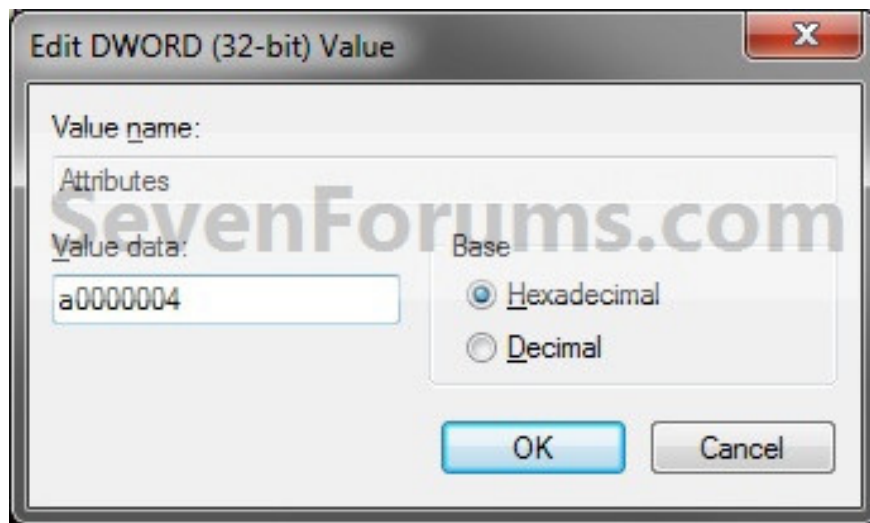


6. Follow step 7 or step 8 to add or remove the user profile folder from the Navigation Pane.

7. Add Control Panle to the Navigation Pane

a, In the right pane of the Registry Editor window, right-click **Attributes** , then click **Modify** , enter **a0000004** there and click **OK** .

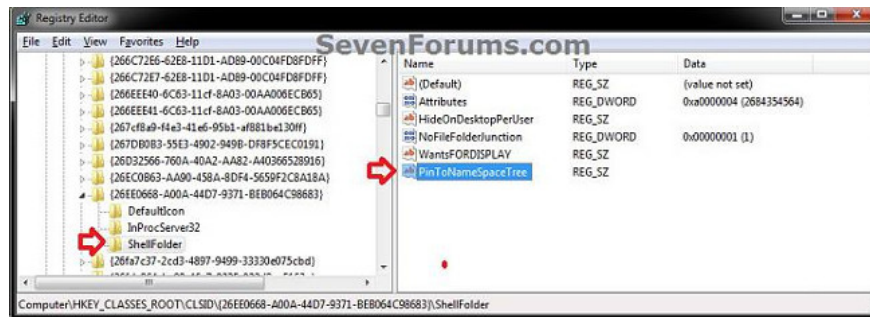




**Note :** Do this to display the Control Panel under Desktop when you select Show all folders.

b, At the **ShellFolder** key, in the right pane, right-click any space, click **New => String Value**, then copy and paste the name below and press **Enter** :

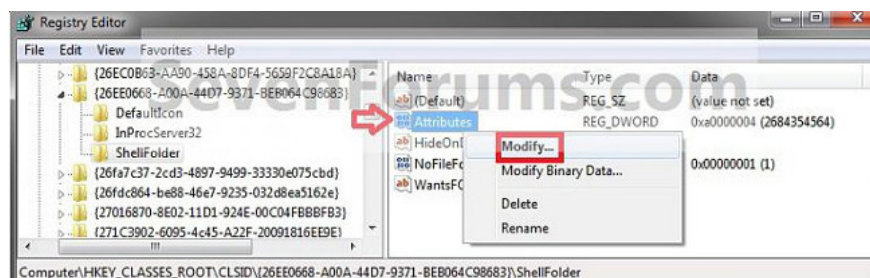
PinToNameSpaceTree

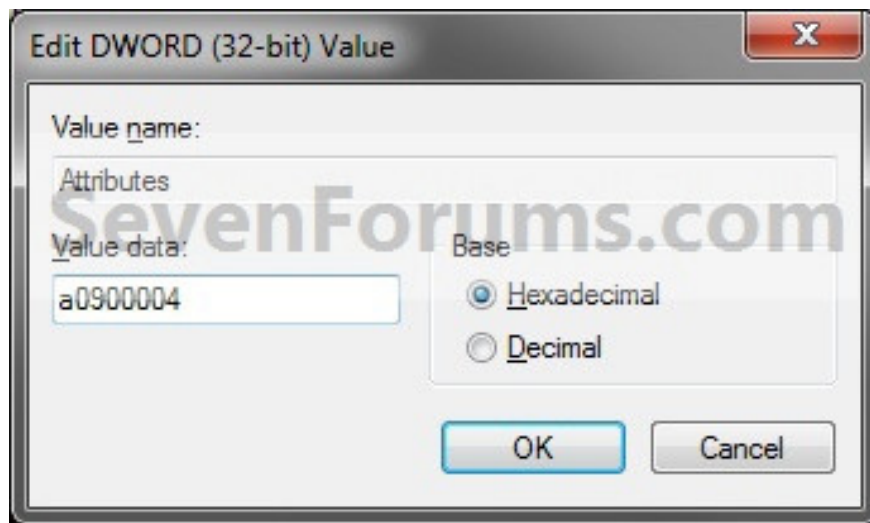


c, Follow step 9.

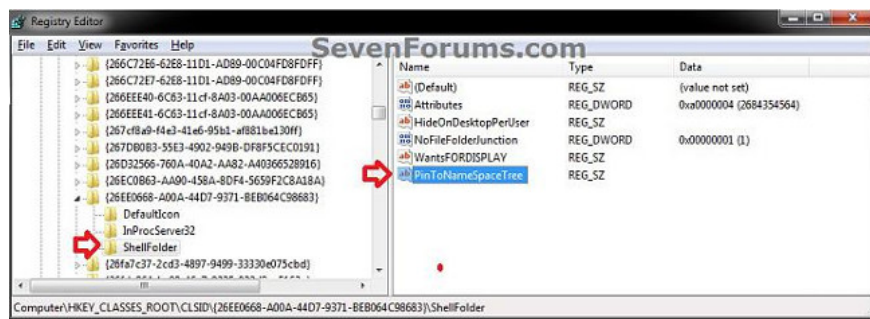
8. Remove Control Panel on Navigation Pane

a, In the right pane of the Registry Editor window, right-click **Attributes** , then click **Modify** , enter **a0900004** then click **OK** .





b, In the right pane of **ShellFolder** key, right-click **PinToNameSpaceTree** and then click **Delete** .



c, Click **Yes** to confirm deletion.



d, Follow next step 9.

9. If installing Windows 7 64-bit version

a, In the Registry Editor window you navigate to the key:

HKEY\_LOCAL\_MACHINE\SOFTWARE\Wow6432Node\Classes\CLSID {26EE0668-A00A-44D7-9371-BEB064C98683} ShellFolder

b, Repeat steps 4 through 7/8 above.

10. Close the **Registry Editor** window.

11. Restart your computer to apply changes.

**Refer to some of the following articles:**

1. 6 ways to access Control Panel on Windows Server 2012
1. How is Control Panel and Settings menu on Windows 10 different?
1. How to add Control Panel to Power User Menu (Windows + X) on Windows 10

**Good luck!**

You finished reading the article "**How to add or remove Control Panel from Navigation Pane on Windows 7**" edited by the [TipsMake](#) team. We hope this article has provided you with many useful tech tips and tricks. You can search for similar articles on tips and guides. Thank you for reading and for following us regularly.