

How to add or delete AHCI Link Power Management - HIPM / DIPM from Power Options on Windows

This article will guide you how to add or remove AHCI Link Power Management - HIPM / DIPM settings on the hard drive in Power Options on Windows 7, Windows 8 and Windows 10.

Installing AHCI Link Power Management - HIPM / DIPM in Power Options allows users to configure the link power management mode for drives and storage devices attached to the system via the AHCI interface. AHCI Link Power Management is a technique in which the AHCI SATA controller places the SATA link into an SSD or HDD at very low power mode.

You can use the following settings:

Setting	Description
---------	-------------

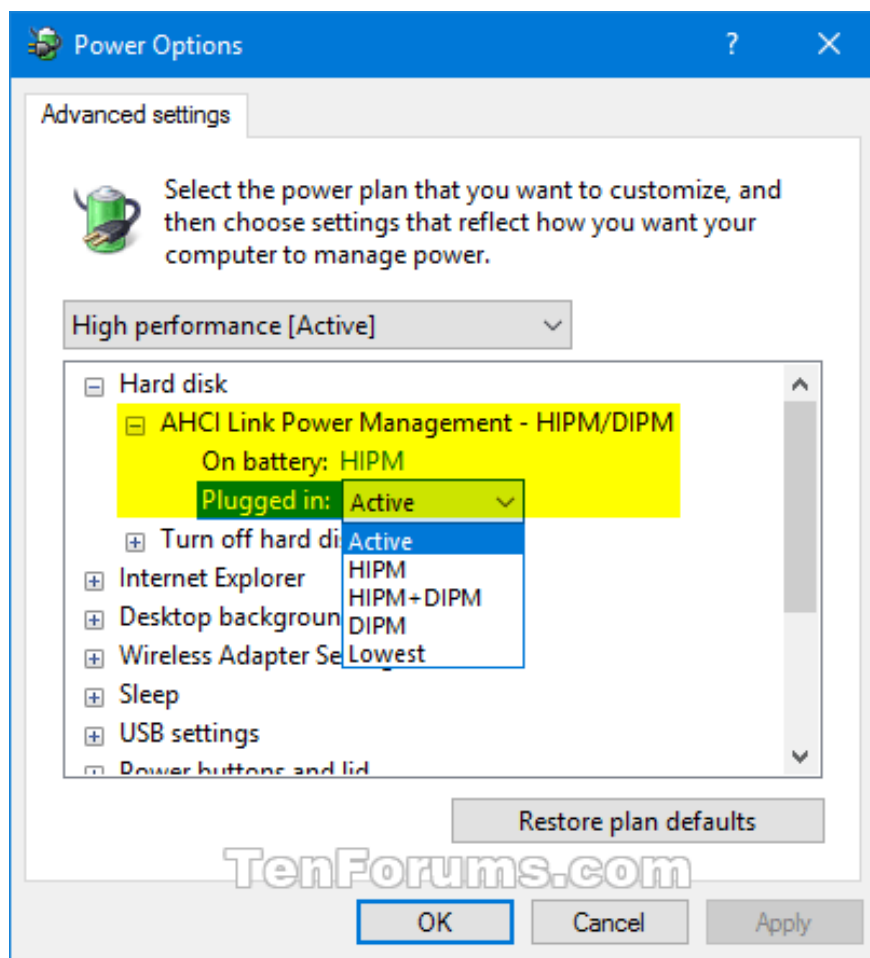
Active	Does not allow HIPM or DIPM. Do not use Link Power Management
HIPM Only	allow HIPM (Host Initiated Link Power Management)
HIPM + DIPM	Allow HIPM and DIPM
DIPM Only	allow DIPM (Device Initiated Link Power Management)
Lowest	Allow HIPM, DIPM and DEVSLP (if device archives support DEVSLP)

This article will guide you how to add or remove AHCI Link Power Management - HIPM / DIPM settings on the hard drive in Power Options on Windows 7, Windows 8 and Windows 10.

1. Power saving modes in Windows
2. Guide to adjust the computer screen brightness manually and automatically
3. Instructions to enable / disable the Battery Saver feature of Windows 10

Note: You must be logged in as an administrator to add or remove this setting in Power Options.

Example of AHCI Link Power Management - HIPM / DIPM in Power Options.



1. Add or delete AHCI Link Power Management - HIPM / DIPM in Power Options using Command Prompt

Step 1 . Open Command Prompt as admin.

Step 2 . Type the following command into the Command Prompt and press **Enter** .

To add use the following command:

```
powercfg -attributes SUB_DISK 0b2d69d7-a2a1-449c-9680-f91c70521c60 -ATTRIB_HIDE
```

Or to delete (Default setting) use the following command:

```
powercfg -attributes SUB_DISK 0b2d69d7-a2a1-449c-9680-f91c70521c60 +ATTRIB_HIDE
```

Step 3 . Close Command Prompt if desired.

2. Add or delete AHCI Link Power Management - HIPM / DIPM in Power Options using REG file

Note: The .reg file below will edit the DWORD value in the following registry key.

```
HKEY_LOCAL_MACHINESYSTEMCurrentControlSetControlPowerPowerSettings012ee47-9041-41
```

1 = Delete

2 = Add

Step 1 . Follow Step 2 or Step 3 below.

Step 2 . To add AHCI Link Power Management - HIPM / DIPM to Power Options, download the file below and go to Step 4.

<https://www.tenforums.com/attachments/tutorials/114332d1482264627-power-options->

Step 3 . To delete AHCI Link Power Management - HIPM / DIPM in Power Options download the file below.

Note : This is the default setting.

<https://www.tenforums.com/attachments/tutorials/114333d1482264627-power-options->

Step 4 . Save the .reg file to the desktop.

Step 5 . Double click the file to import it.

Step 6 . When you see the UAC message, click on **Run, Yes (UAC), Yes** and **Ok** to agree.

Step 7 . Now you can delete the downloaded file if you want.

I wish you successful implementation!

You finished reading the article "**How to add or delete AHCI Link Power Management - HIPM / DIPM from Power Options on Windows**" edited by the [TipsMake](#) team. We hope this article has provided you with many useful tech tips and tricks. You can search for similar articles on tips and guides. Thank you for reading and for following us regularly.