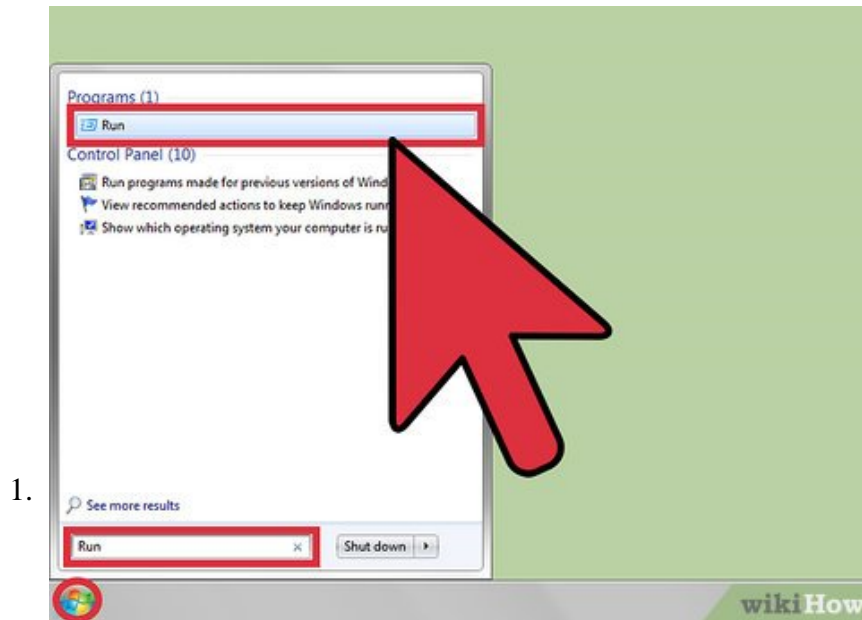


# How to Add New Options to Right Click Menu in Windows

The right-click menu of Windows is perhaps the most widely used feature of the operating system. Apart from enabling you to add new folders, cut, copy and paste files from one location to the other, you can add more options to the...

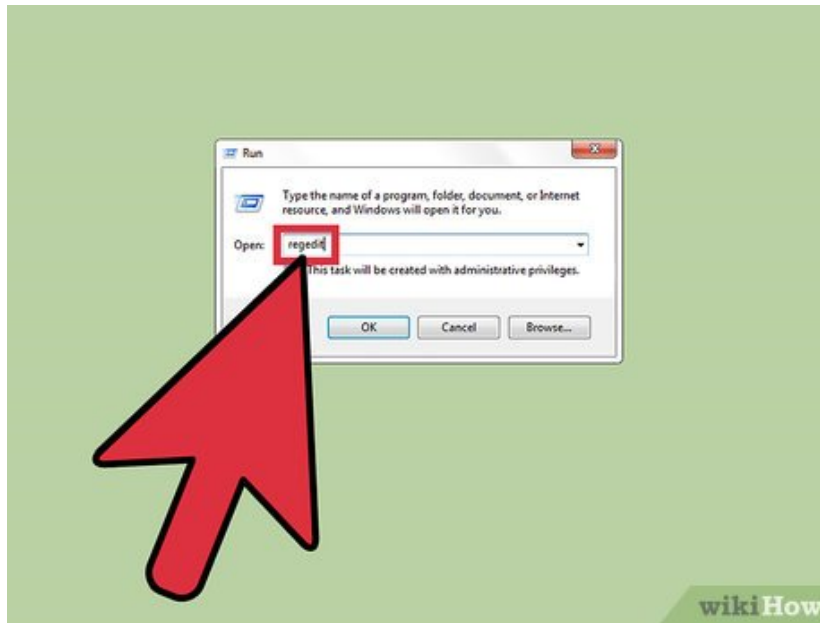
Method 1 of 2:

## Using the Registry Editor



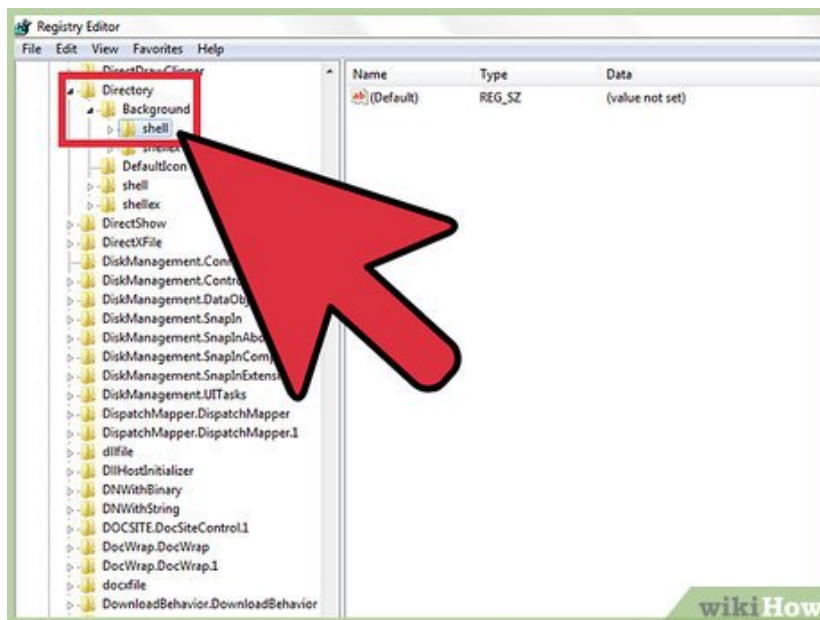
Go to 'Start and type 'Run' in the search box. Click on the Windows icon on the bottom left corner of the screen to bring up the programs tab. Type in 'Run' and hit enter to bring up the program to the list.

2.



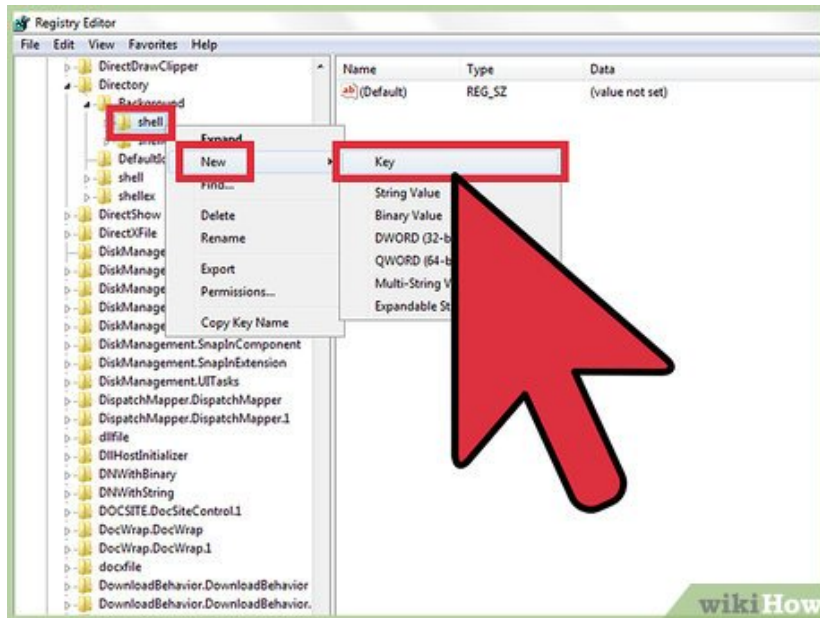
**Open 'Run' and type 'regedit' in the search box.** Double-click on the 'Run' icon to bring up the program, and type in 'regedit' to open up the registry editing tool for Microsoft Windows.

3.



**Navigate to the 'ContextMenuHandlers' folder.** This folder contains all of the applications, shortcuts and other options that are present in your right-click context menu. There are different 'ContextMenuHandlers' folders present in the registry, and you'll want to select that one that meets your needs:<sup>[1]</sup>

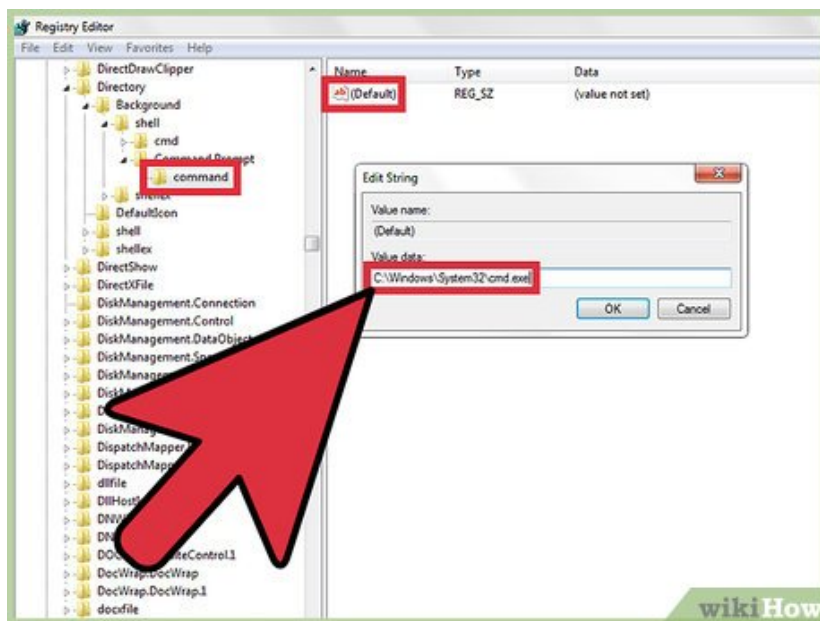
1. If you wish to add options to the right-click menu for files, navigate to *HKEY\_CLASSES\_ROOT\*shellContextMenuHandlers*.
2. If you wish to add options to the right-click menu for folders, navigate to *HKEY\_CLASSES\_ROOTFoldershellContextMenuHandlers*.
3. If you wish to add options to the right-click menu for desktop, navigate to *HKEY\_CLASSES\_ROOTDirectoryBackgroundshellContextMenuHandlers*.



4.

**Add a key to the ContextMenuHandlers folder.** Right-click on the ContextMenuHandlers folder, move the cursor over to 'New,' and click on 'Key.' A sub-key will be created under the default name of 'New Key #1.'

1. Rename the new key to the name of the application or pathway you wish to add to the right-click context menu. For instance, if you wish to add a shortcut to the Command Prompt in the right-click menu, enter the name of the sub-key as 'Command Prompt.' You can name the sub-key whatever you want, it does not affect the application or the process.

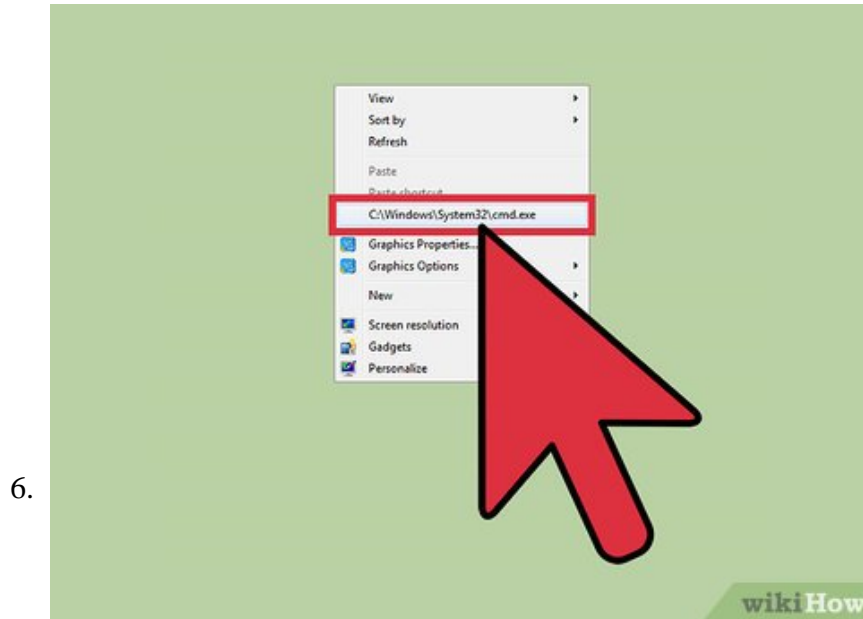


5.

**Change the Default Value of the sub-key.** To change the value of the sub-key, double-click on the 'Default' value inside the sub-key that you have created. In order for the computer to recognize the application, you must add the path to the executable (.exe) file of the application to the Default value.

1. To find the path of a file or folder, right-click on the address bar of the window in which the file or folder is located. Left-click on 'Copy address' and paste it in Notepad to view the address. You can

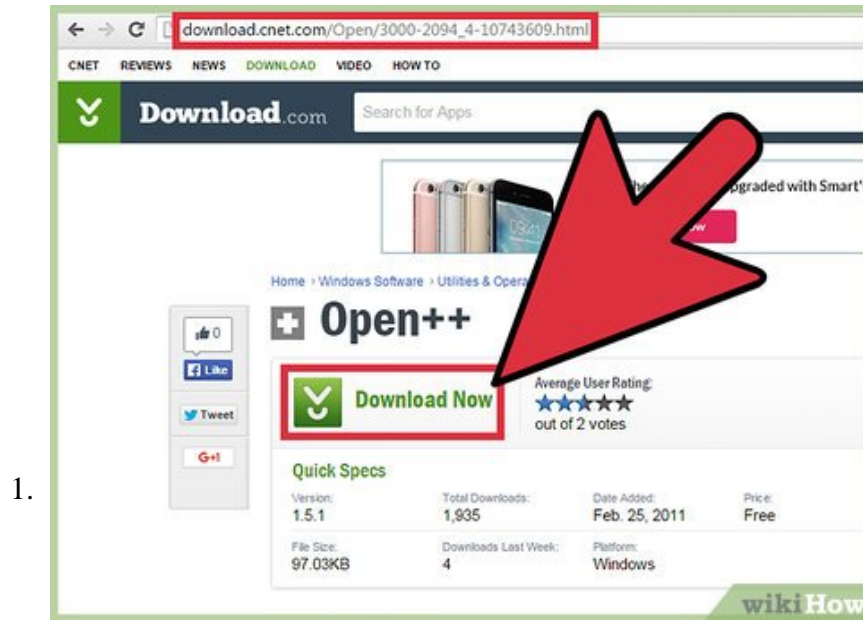
- also directly paste the pathway as the Default Value of the key.
2. Make sure that you add the path of the file, application, or folder correctly into the value of the Default key. For instance, if you are adding Command Prompt to your right-click menu, enter the path 'C:\Windows\system32\cmd.exe' as the value of the Default key.
  3. Make sure that you do not interfere or edit the values of any other keys other than ContextMenuhandlers. Editing or deleting the wrong folders or keys could corrupt the operating system.



**Check the new right-click options.** Go to your desktop (or a folder or file if that's the registry value you changed) and right-click to view and confirm that the new option has been added to the right-click context menu.

Method 2 of 2:

**Using Open++**



**Download and install Open++.** Open++ is a third-party software that makes the process of adding options to the right-click menu easier and quicker.

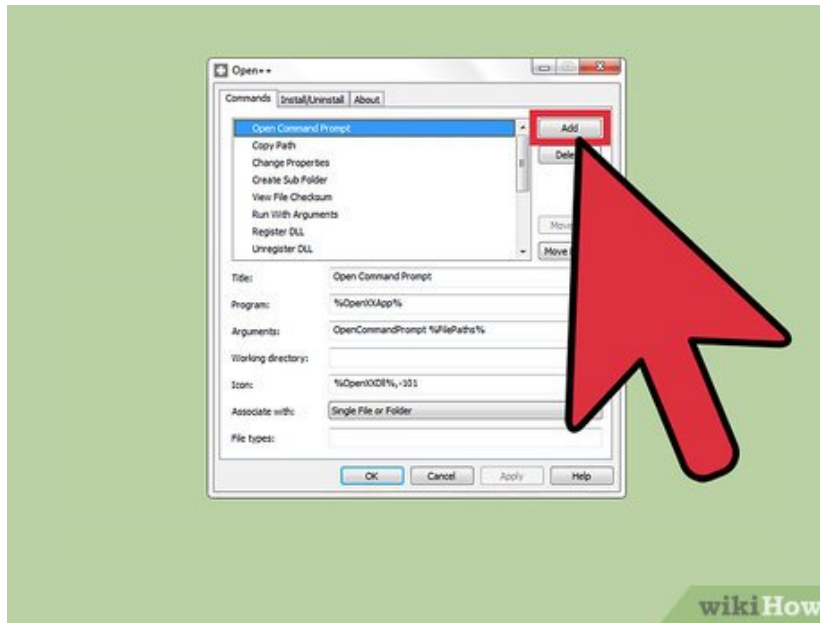
1. Download the Open++ freeware application from any trusted website and follow the installation instructions.
2. Read each installation screen to ensure that you aren't installing additional software. This is especially important if you are downloading Open++ from a location like Download.com or Tucows.com.



**Access the Open++ application.** The Open++ software offers a simple layout and a window that displays all of the 'Commands' that are currently present in the right-click menu.

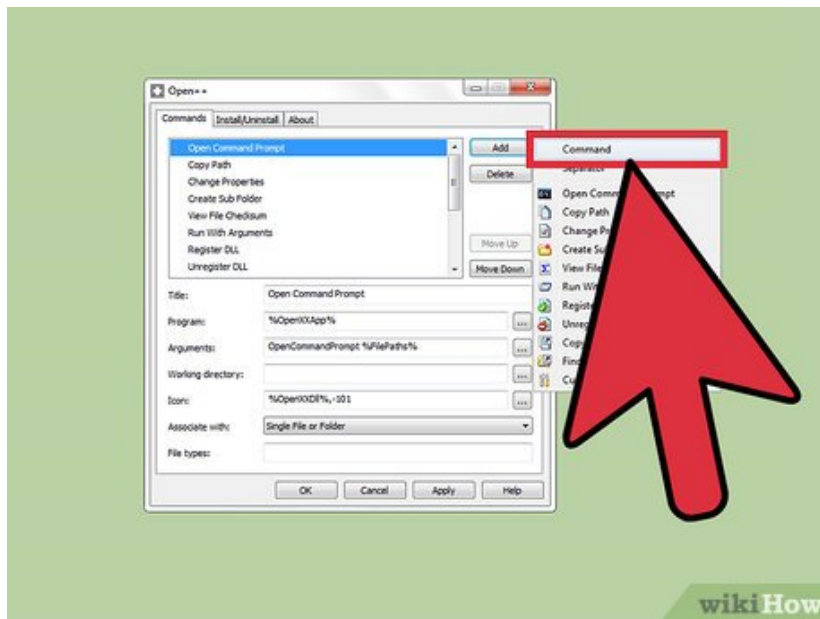
1. You can scroll down the window to see all of the commands that are present in the right-click menu for files, folders, and the desktop as well.

3.



**Click on 'Add' and enter the details of the command.** There will be a number of commands that are already present in the Open++ 'Commands' window. Click the 'Add' button on the right side of the window, and click on 'Command' to add new commands to the Open++ context menu.

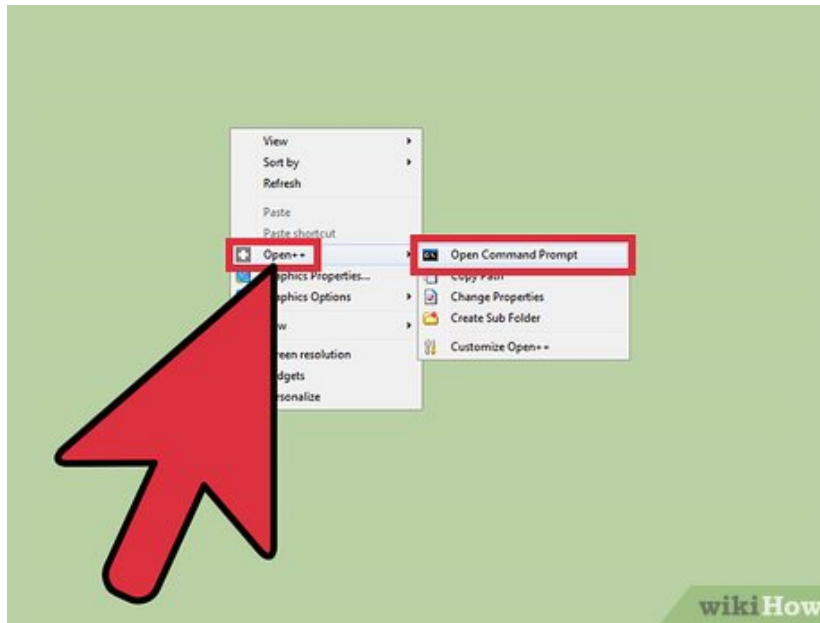
4.



**Add the new command to Open++.** A new icon will appear in the 'Commands' window, under the default name of 'New Command.'

1. In order to change the name of the command, type the new name inside the 'Title' field.
2. If you wish to use the command to open a particular program on the computer, use the 'Program' field to locate the .exe file of the program.
3. You can also choose the icon for the command by using the 'Icon' option. You can also associate the command to particular file types, by entering their format in the 'File types' field.
4. Once you have added the details of the command you wish to add to Open++, click 'Apply' to save your choices.

5.



**Access the Open++ right-click menu extension.** The preset commands and the commands you have added to Open++ will be displayed in the right-click context menu. When you right-click, select the 'Open++' option to expand an additional menu with your Open++ commands.<sup>[2]</sup>

You finished reading the article "**How to Add New Options to Right Click Menu in Windows**" edited by the [TipsMake](#) team. We hope this article has provided you with many useful tech tips and tricks. You can search for similar articles on tips and guides. Thank you for reading and for following us regularly.