

# How to add 'Move to' or 'Copy to' to the Windows 10 context menu

Windows 10 has a hidden function that allows you to right-click a file and move or copy it to a specific location desired. This small registry tip will help you copy and move files easily.

Windows 10 has a hidden function that allows you to right-click a file and move or copy it to a specific location desired. This small registry tip will help you copy and move files easily.

If you've never worked with Registry Editor before, you might want to learn a bit about it before you start and remember to back up the Registry (as well as your computer), before making the following changes.

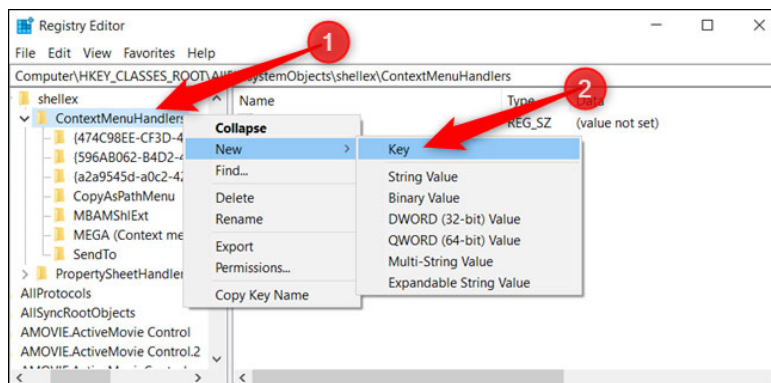
If you want to be more secure, you can also create a system restore point before continuing.

## Add 'Move to' option to context menu

To add **'Move to'** to the context menu, the first thing you have to do is open the Registry Editor. Navigate to the following key in the left sidebar or you can paste directly into the address bar:

`HKEY_CLASSES_ROOT\AllFiles\systemObjectshell\ContextMenuHandlers`

Here, right-click on **'ContextMenuHandlers'** , click and select **New> Key** from the pop-up menu.

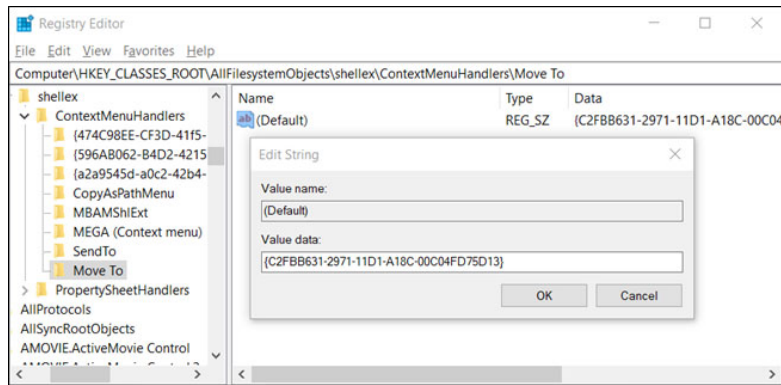


Right click on 'ContextMenuHandlers'

Name the new key **'Move to'** and then press **Enter** .

Now, double-click **(Default)** , paste the following string in the **Value Data** field, and then press **Enter** :

{C2FBB631-2971-11D1-A18C-00C04FD75D13}



Paste the string into the Value Data field

You can now close Registry Editor safely. You do not need to reboot or log out to start using this function.

## Add the 'Copy to' option to the context menu

Same as before, to add 'Copy to' to the context menu, first open Registry Editor.

Navigate to the following key in the left sidebar or paste directly into the address bar:

```
HKEY_CLASSES_ROOT\AllFilesystemObjects\shell\ContextMenuHandlers
```

Here, right-click **ContextMenuHandlers** and select **New > Key** from the pop-up menu.

Name the new key '**Copy to**' and press Enter .

Now, double-click (**Default**) , paste the following string in the **Value data** field, then press Enter :

```
{C2FBB630-2971-11D1-A18C-00C04FD75D13}
```

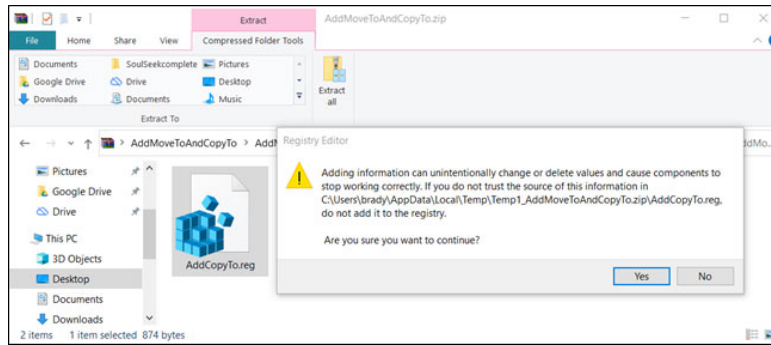
When finished, you can safely close Registry Editor. Again, you do not have to reboot or log out to start using this function.

## Use the REG file

If you don't want to edit the registry, you can download the following files to add '**Move to**' or '**Copy to**' to the context menu. Just download this ZIP file:

<https://www.howtogeek.com/wp-content/uploads/2020/01/AddMoveToAndCopyTo.zip>

. open and double-click '**AddMoveTo.reg**' or '**AddCopyTo.reg**' , then click **Yes** to add information to the registry.

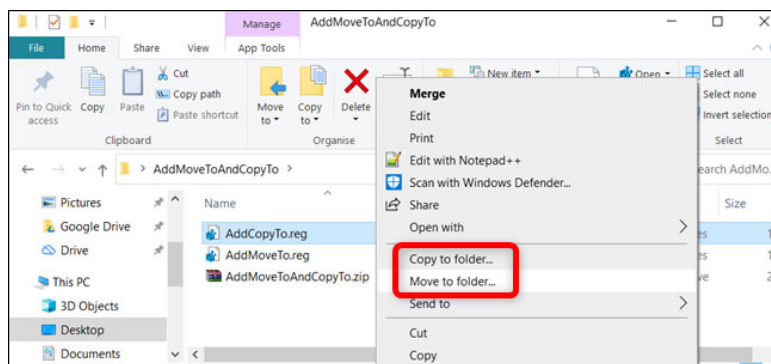


It is recommended to start using this function.

These REG files add registry settings like the one mentioned above.

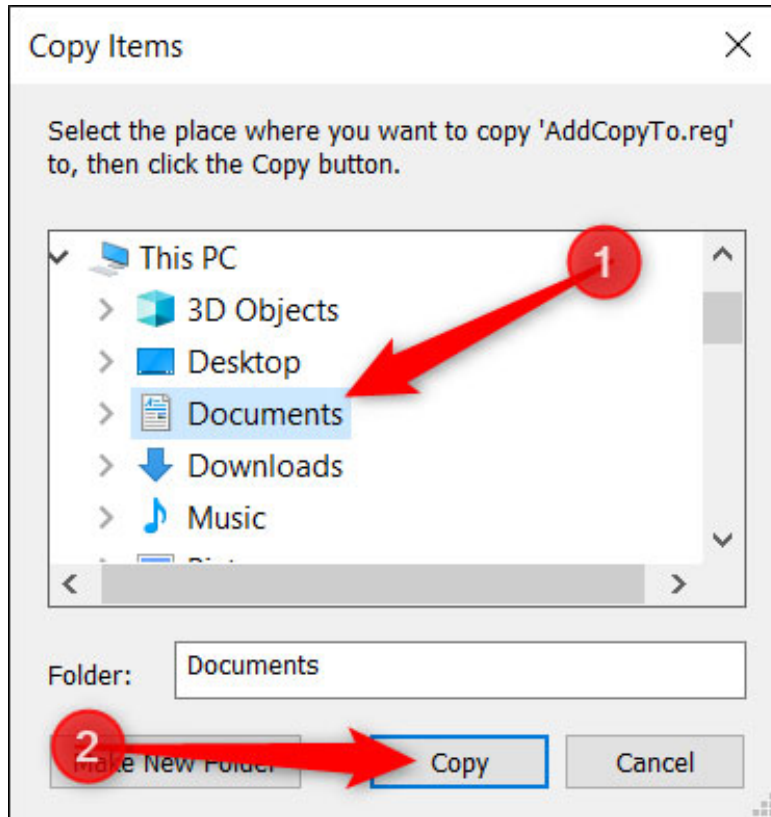
## Use 'Move to' or 'Copy to' from the context menu

After you add these tweaks to the Windows Registry and right-click the file or folder, the context menu will appear as usual, but it will also now contain the 'Move to' and / or 'Copy' options. to ' .



The options 'Move to' and / or 'Copy to' appear

A small dialog box will appear so you can select the destination folder. Once done, simply click on 'Copy' to send the file to the directory you specified.



Click 'Copy' to send that file to the specified folder

You finished reading the article "**How to add 'Move to' or 'Copy to' to the Windows 10 context menu**" edited by the [TipsMake](#) team. We hope this article has provided you with many useful tech tips and tricks. You can search for similar articles on tips and guides. Thank you for reading and for following us regularly.