

How to add GPX files to Google Maps

Besides the KML format, which Google allows users to add to Google Maps for more convenient map viewing, there are other formats such as GPX. However, not all users know how to add this format to their Google Maps. Let's follow the steps below with TipsMake to add the GPX format to your device.

GPX is essentially the JPG of the map data world. This format makes it easy to share map data with users and allows this map data to be viewed on most of their devices. However, uploading this format to Google Maps can still generate unnecessary data. Therefore, the first thing you need to do is convert the GPX file on your computer to a KML file for use on this platform.



Instructions on uploading GPX files to Google

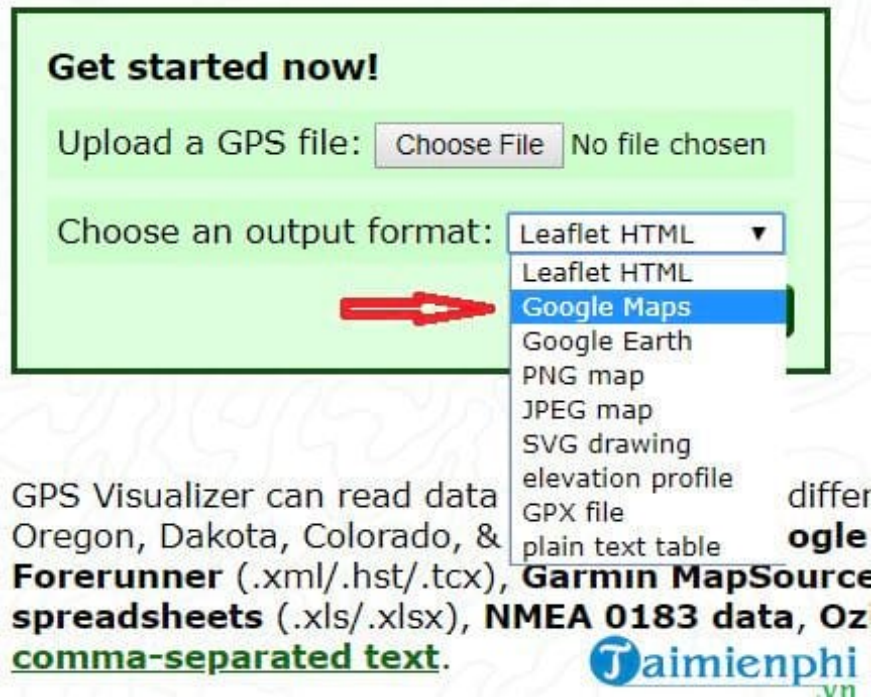
- Download Google Maps for Android
- Download Google Maps for iPhone

How to convert GPX to KML

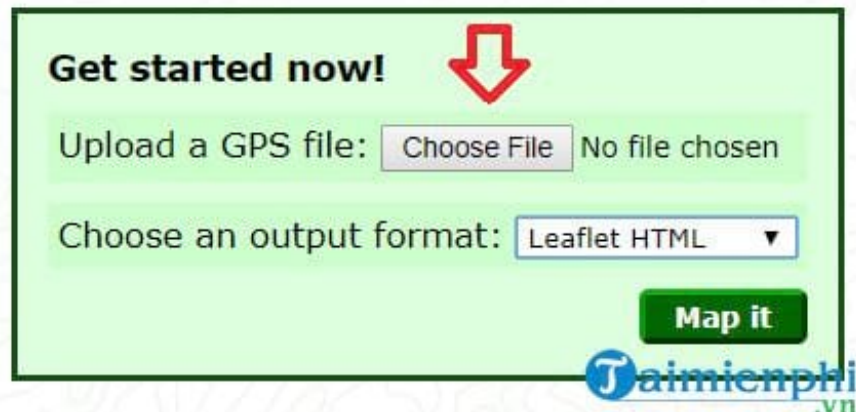
Step 1: Open your computer's browser and **go to the** website address: <https://www.gpsvisualizer.com/>



Step 2: Next, scroll down and you will see the " **Get started now**" option . Select "Google Maps" in the " **Choose an output format**" section .



Step 3: In the "Upload a GPS file" section above, upload the **GPX file** from your computer and click "**Map it**"



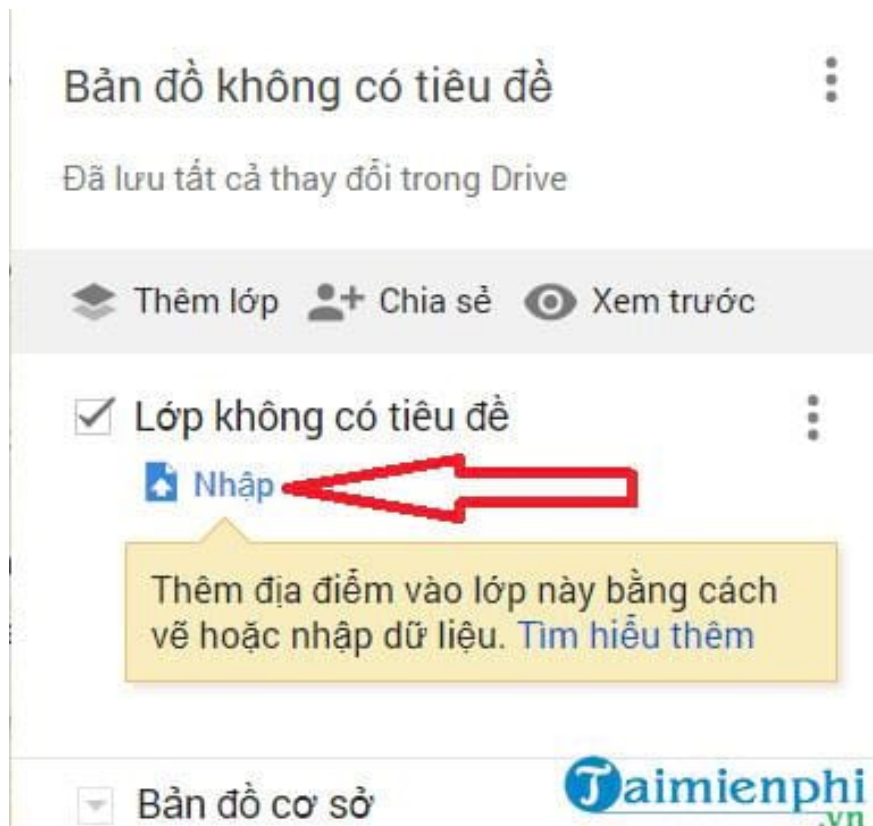
How to add GPX to Google Maps

Step 1: Access the address: <https://www.google.com/maps/d/> and log in to your account.

Step 2: Select the " **Create new map**" option.



Step 3: A map will appear; find the "Import" option.



Step 4: Select the **GPX file** that you converted to KML in the previous step from your device and upload it .

Kéo một tệp CSV, XLSX, KML hoặc GPX vào đây

Hoặc nếu bạn muốn...

Chọn tệp từ thiết bị



So, in the article above, I have guided you through the steps to add GPX to Google Maps. Additionally, many users encounter the "not working" error when using Google on their devices. So, how to fix Google Maps not working ? You can refer to the article on TipsMake for more information.

You finished reading the article "**How to add GPX files to Google Maps**" edited by the [TipsMake](#) team. We hope this article has provided you with many useful tech tips and tricks. You can search for similar articles on tips and guides. Thank you for reading and for following us regularly.