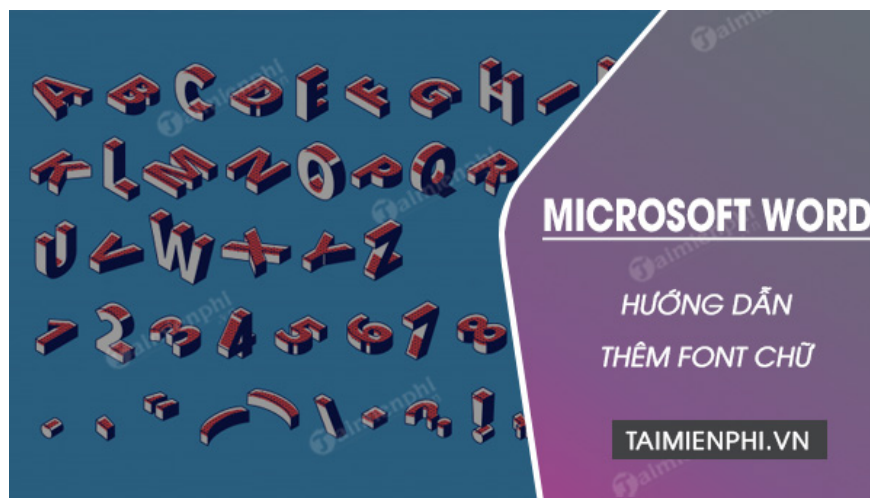


How to add fonts to Word in Windows computer

Want to change the font in Word to make your document stand out? Check out this simple guide to adding fonts to Word to help you compose beautiful and professional documents.

Font errors in Word documents when transferred between computers are due to incompatibility between fonts. This article will guide you on how to add new fonts to Word to avoid this situation.



Instructions on how to add fonts to Word

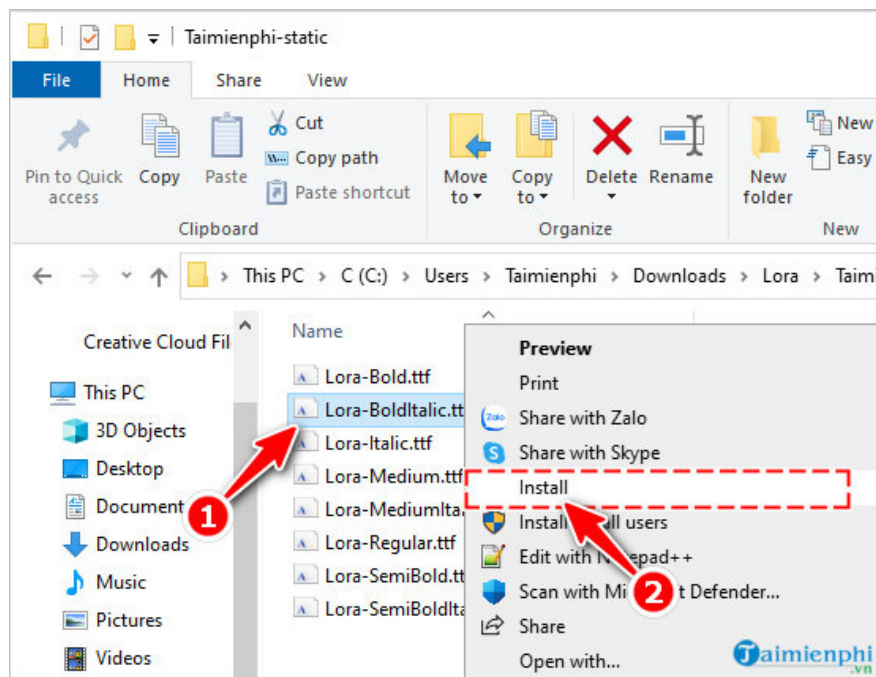
Article content:

1. Method 1
2. Method 2
4. Method 3

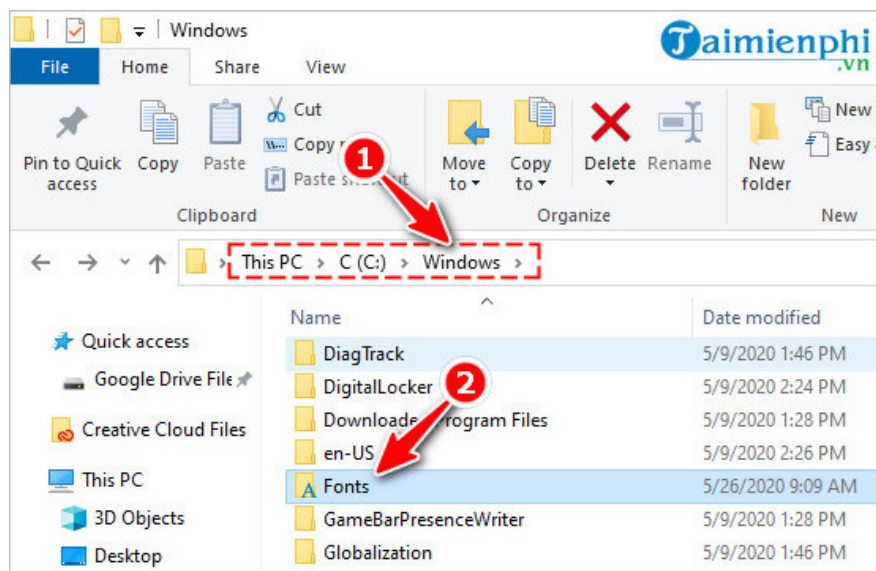
How to add fonts to Word

Method 1 : For Win 10 or Win 7, 8 computers

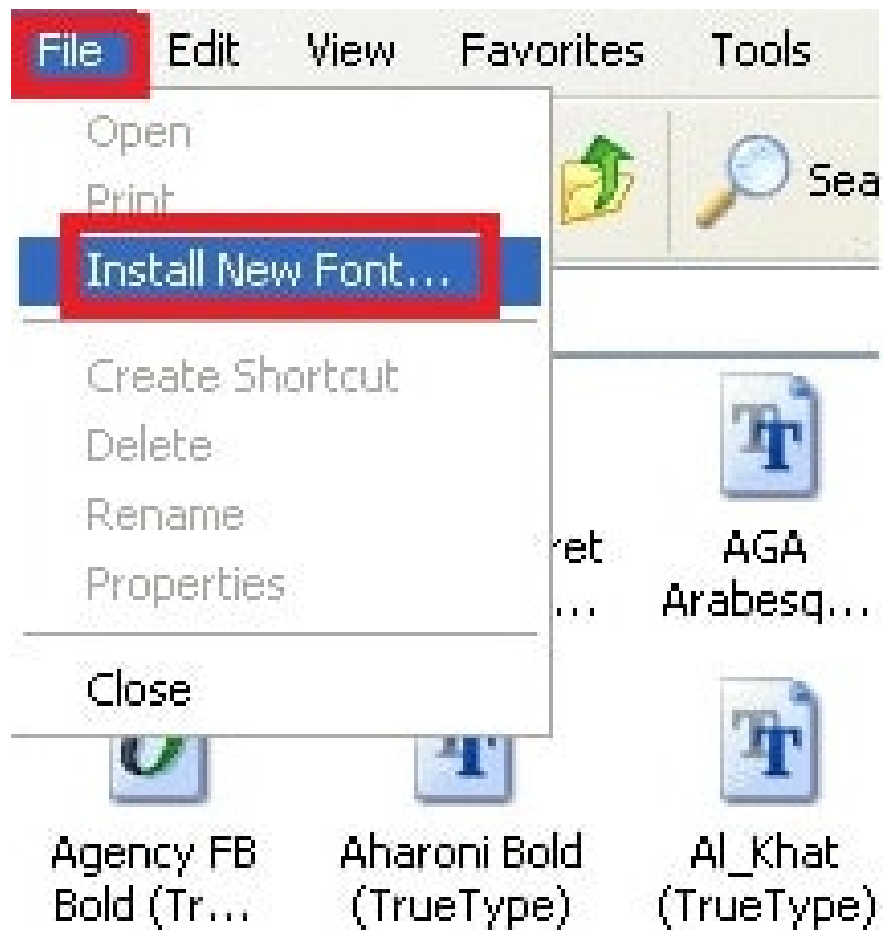
You just need **the font** you want to add, unzip it. Then right click on that font and press **Install** .



Method 2 : Download the font you need to add, then unzip and copy all of those fonts to the **Fonts** folder in the computer's **C:** drive with the default path being **C:WindowsFonts** . The computer will then automatically install the new font for you.



Method 3 : For older versions of Windows, users go to **Start** , select **Settings** , then select **Control Panel** , double-click on the **Fonts** icon . When the Fonts window appears, click **File**, select **Install New Font** .



The Add Fonts window appears, select the folder containing the fonts you want to add. Select all or select the Fonts you want to install and check the box **Copy fonts to Fonts folders** if this box is not selected then click **OK** to install. Any fonts that are already on your computer will be reported and you just need to click **OK** .

Above are the ways to add new fonts to your computer. If after installing the font, you do not see it appear in Word, you should restart your computer. The ways to add fonts introduced by TipsMake apply to all current versions of Word.

Footnote is a useful feature in Word, which helps explain the meaning of words or phrases that need clarification in the document, displayed at the bottom of each page. If you have not used this feature, refer to how to **create Footnote in Word** here.

You finished reading the article "**How to add fonts to Word in Windows computer**" edited by the [TipsMake](#) team. We hope this article has provided you with many useful tech tips and tricks. You can search for similar articles on tips and guides. Thank you for reading and for following us regularly.