

How to add drawings to videos on Camtasia Studio

Inserting drawings into videos on Camtasia Studio will help viewers pay attention to something.

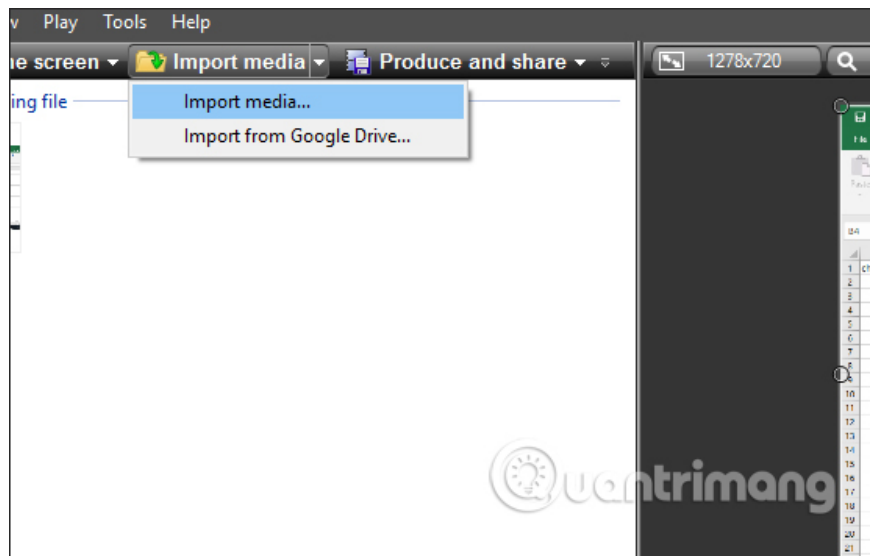
Camtasia Studio is currently one of the video editing software, creating video effects used by many people. You can now record screen video on Camtasia Studio and then edit the video on the software, using professional tools. And during video editing, users can add drawings such as circles, squares, arrows to highlight a certain content. Thus, video viewers will pay attention to the content of the appearance of more drawings. The following article will show you how to insert a video drawing on Camtasia Studio.

1. How to pair 2 videos into 1 using Camtasia Studio
2. How to adjust video audio on Camtasia Studio
3. How to separate audio, split video by Camtasia Studio

Instructions for inserting Camtasia Studio video drawings

Step 1:

Users click **Import media** and then import the video on the computer into Camtasia or use the video recording screen.

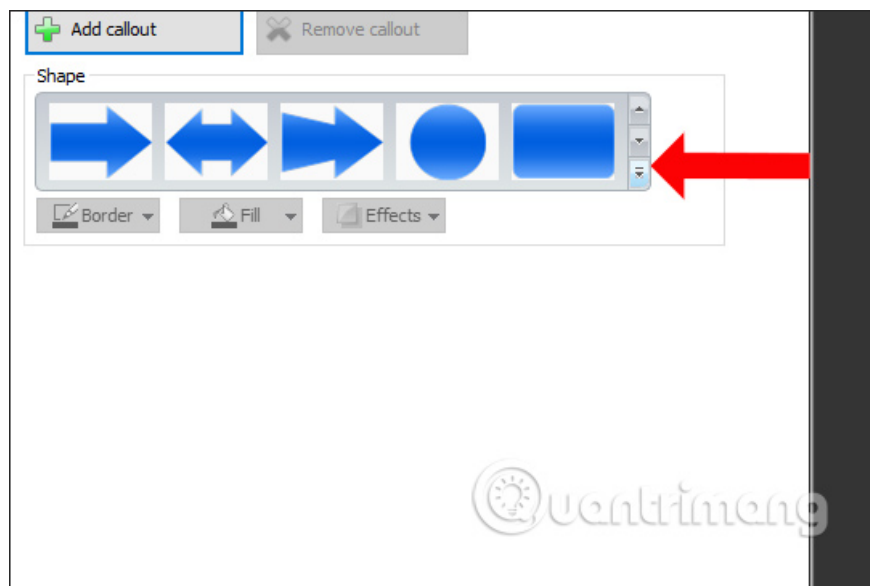


Step 2:

Drag the video below **the Timeline bar** and then play the video to the location where you want to insert the drawing. Click **Callouts tool** in Camtasia interface.

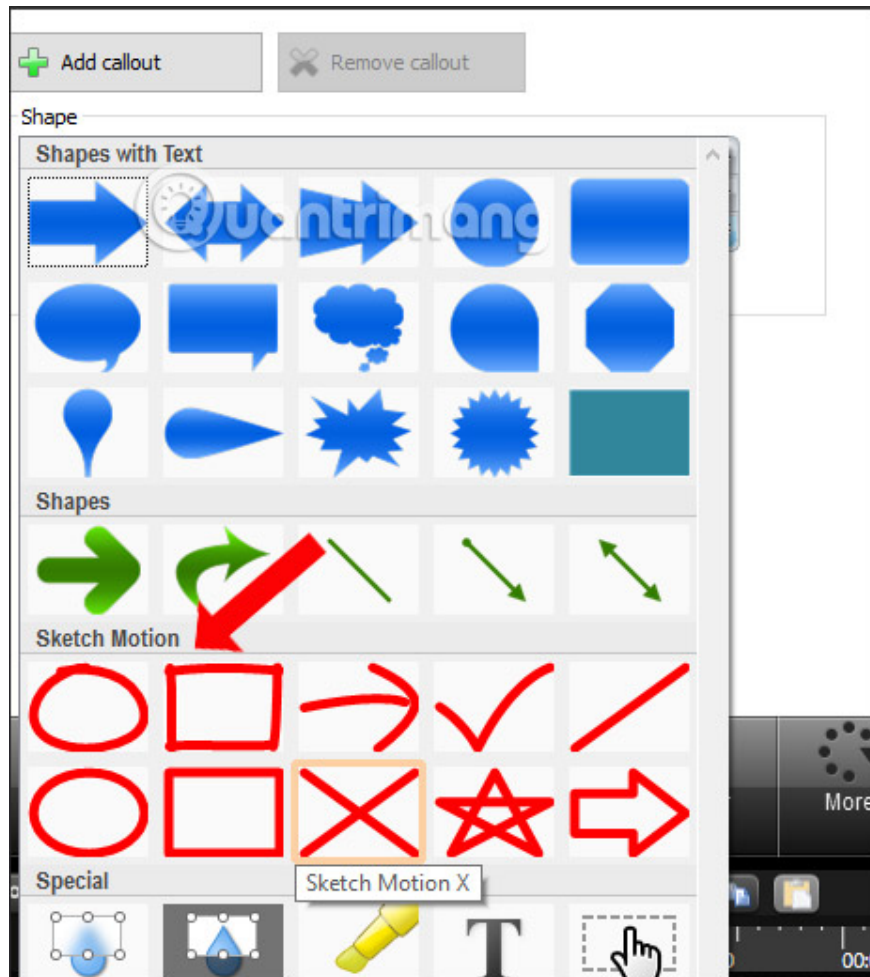


Display the Shape frame and click on **the drop-down triangle icon** to expand the interface.



Step 3:

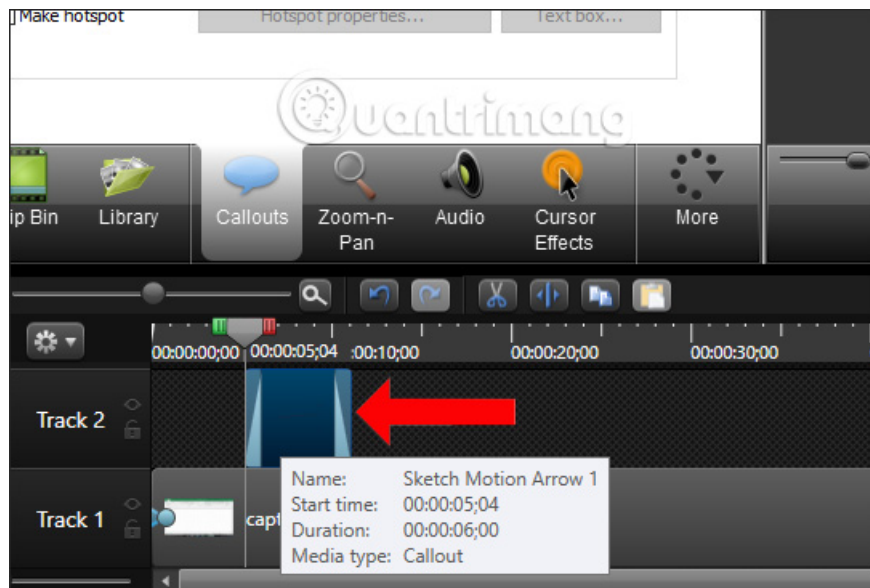
Looking down on the **Sketch motion** has all 10 different drawings for users to choose to insert the current video on Camtasia. Depending on the content in the video, insert a drawing that we choose accordingly.



Step 4:

After the selection is completed, the drawing will be displayed on the new Track. When hovering over the drawing it will display some basic information including.

1. Name: Name.
2. Start time: Time to appear.
3. Duration: The total time from when it appears to disappear.
4. Media type: Type of drawing.

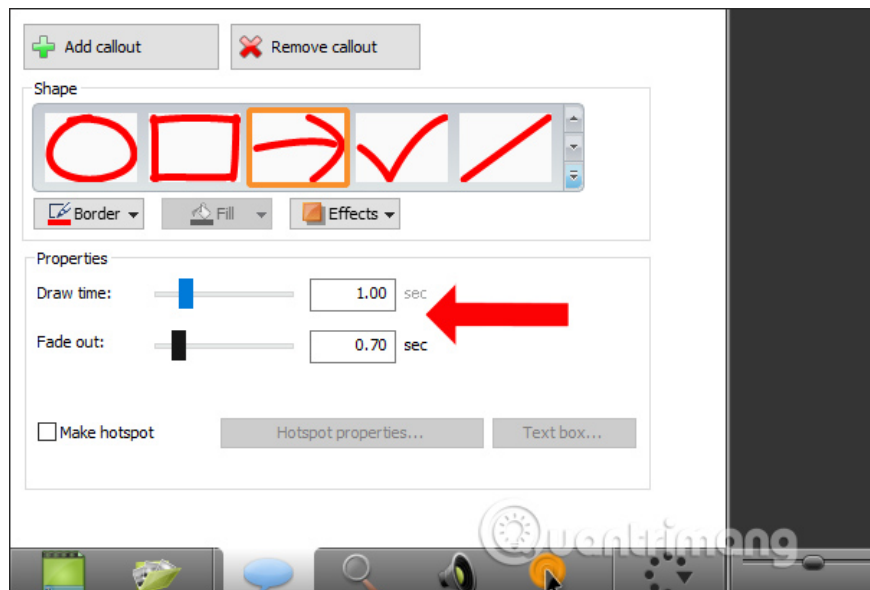


Step 5:

Looking at the frame above the Properties section will show the drawing time of the animation.

1. Draw time: Enter the new time in seconds.
2. Fade out: Enter a new time in seconds.

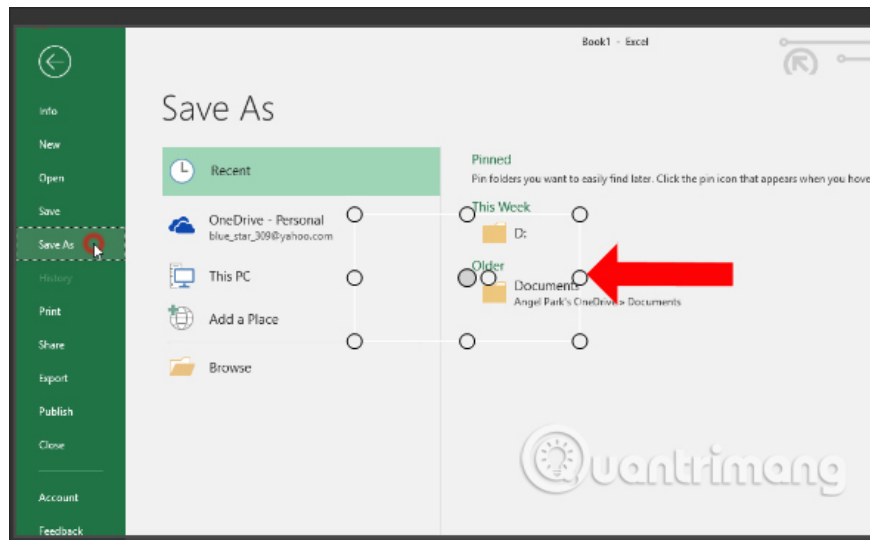
We can adjust this time depending on the content that needs to be highlighted, aligning the time when the content is displayed.



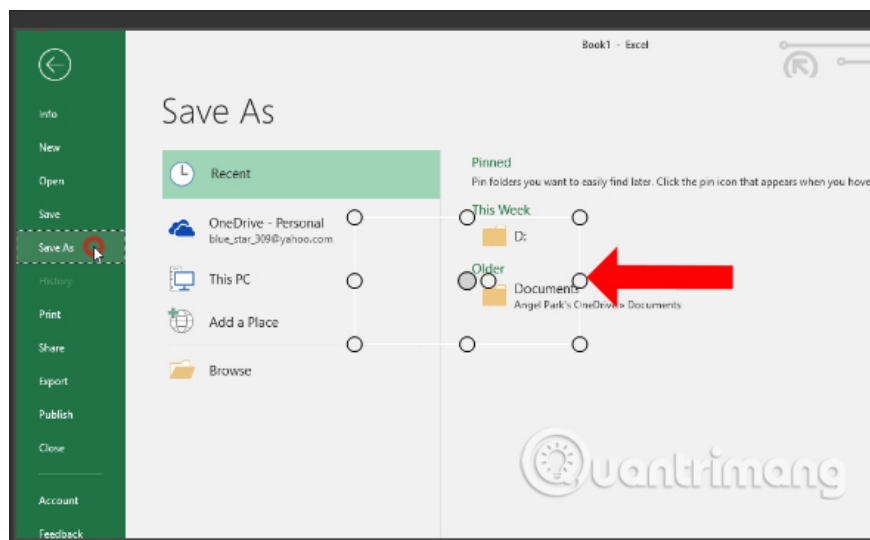
Step 6:

In the video frame on Camtasia you will see a picture frame. Here we can move the drawing to any position we want, minimize or enlarge the drawing, change the direction of the drawing, by using the dots on the image.

If you want to change to another image, press the drawing in Timeline and then click on Shape to choose Sketch motion and then select a new drawing to change.



Now you test the video and by the time the drawing is shown, we will see the drawing in the video as shown below. If the drawing is too long and you want to shorten the time, you can adjust it at Draw time or Fade out to shorten the time of drawing and disappearing of the drawing.



With different drawings, users have more ways for viewers to pay attention to localized content, or content with attached arrows. After adding the drawing you should check and adjust the time to display the drawing accordingly.

See more:

1. Shortcuts in Camtasia Studio
2. Top online video editing websites
3. Instructions on how to create subtitles for videos with Aegisub

I wish you all success!

You finished reading the article "**How to add drawings to videos on Camtasia Studio**" edited by the [TipsMake](#) team. We hope this article has provided you with many useful tech tips and tricks. You can search for similar articles on tips and guides. Thank you for reading and for following us regularly.
