

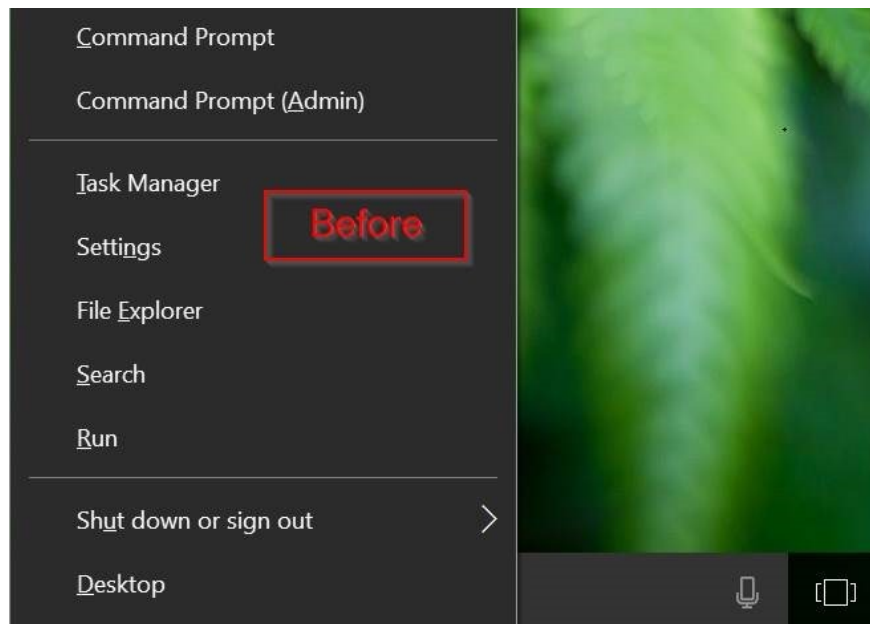
How to add Control Panel to Power User Menu (Windows + X) on Windows 10

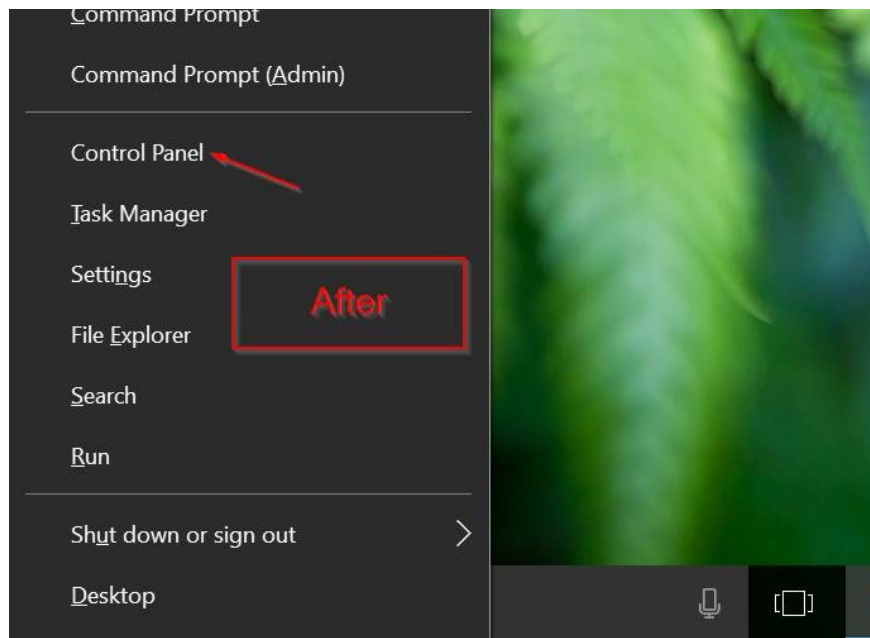
Power User Menu, also known as Win + X Menu, was first introduced on Windows 8 version, allowing users to easily access system tools such as Disk Management, Control Panel and Command Prompt.

Power User Menu , also known as **Win + X Menu**, was first introduced on Windows 8 version, allowing users to easily access system tools such as Disk Management, Control Panel and Command Prompt.

To open the Power User Menu (Win + X), you can press the **Windows + X** key combination or right-click the **Start** button in the Taskbar.

On Windows 10 Anniversary Update and older versions, the Power User Menu (Menu Win + X) will display the **Control Panel** option. However, on Windows 10 build 14942 and later versions, the Control Panel option is completely replaced by the **Settings** option.





If you want to add Control Panel option to Menu **Win + X** , please refer to the following article of Network Administrator.

Steps to add Control Panel to Windows Menu + X:

To customize the Power User Menu (Windows + X) on Windows 10, you can rely on the support of the 3rd application, **Win + X Menu Editor** .

Step 1:

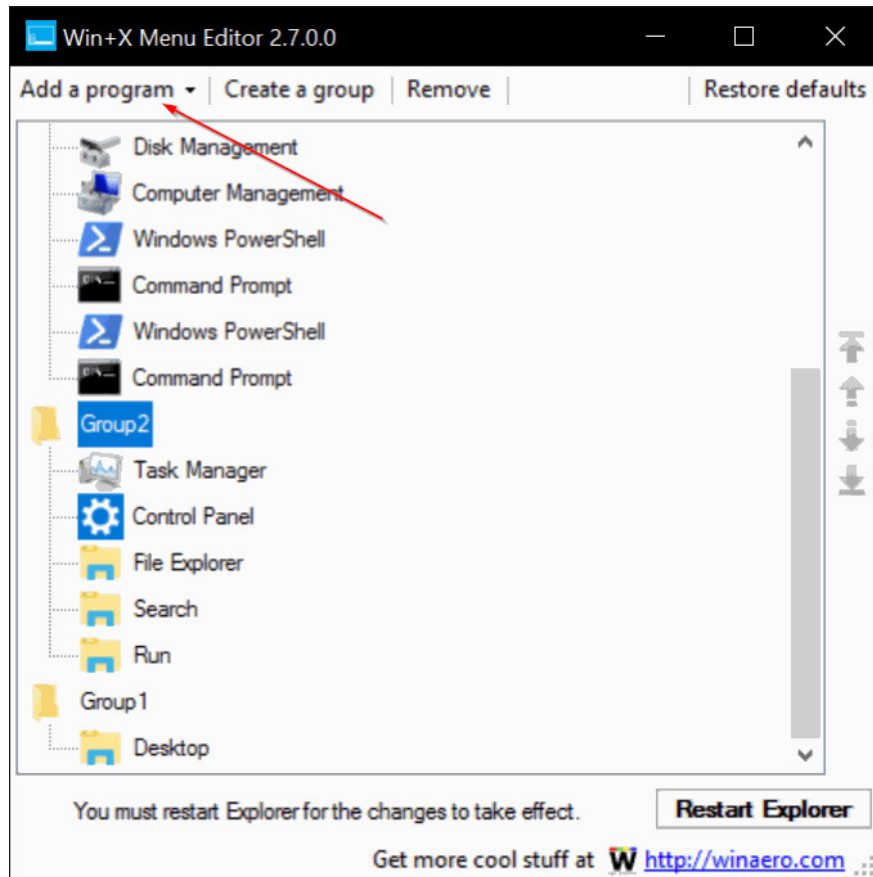
Download Win + X Menu Editor to your computer and install.

Download Win + X Menu Editor to your computer, unzip and install it here.

Step 2:

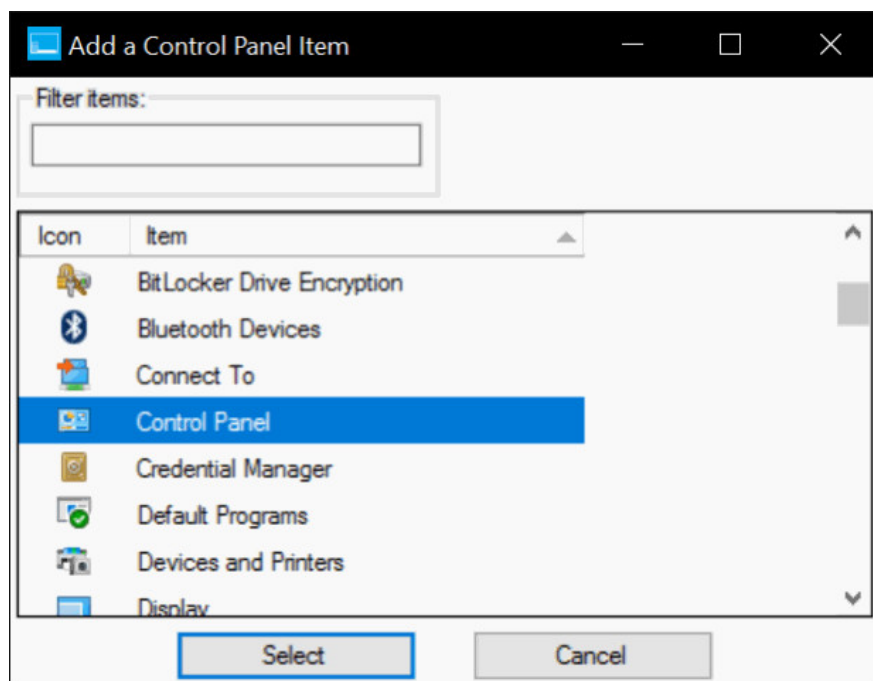
Depending on which version of Windows 10 you use is 64 bit or 32 bit, you run the Win + X Menu Editor file in the x64 or x86 folder.

Step 3:



After the program starts, you can choose **Group 1**, **Group 2** or **Group 3** . In the following example, Network Administrator select **Group 2** to add the next Control Panel option Settings option.

Step 4:



Click the **Add a program** button, then click **Add a Control Panel** , select **Control Panel** from the list and then click **Add** .

Step 5:

Click **Restart Explorer** to restart Windows Explorer. The Control Panel option will appear on Power User Menu when you right-click on the **Start** button or when pressing the **Windows + X** key combination.

Refer to some of the following articles:

1. How to activate Dark Mode on Windows 10?
2. How to use Command Prompt to manage wireless networks on Windows 10?
3. Trick to enable / disable Windows Updates on Windows 10 quickly and easily

Good luck!

You finished reading the article "**How to add Control Panel to Power User Menu (Windows + X) on Windows 10**" edited by the [TipsMake](#) team. We hope this article has provided you with many useful tech tips and tricks. You can search for similar articles on tips and guides. Thank you for reading and for following us regularly.