

How to Add an HP Printer to a Wi Fi Network

TipsMake today will show you how to connect a supported HP printer to a wireless network (Wi-Fi). This will allow you to print from a computer connected to the same network without having to plug the printer into the computer. Not all HP printers have wireless connectivity, so you'll need to make sure the printer can connect to the internet before continuing.

Connect automatically



Make sure your computer and network are compatible with each other. To use HP Auto Wireless Connect, the computer and network configuration must meet the following requirements:

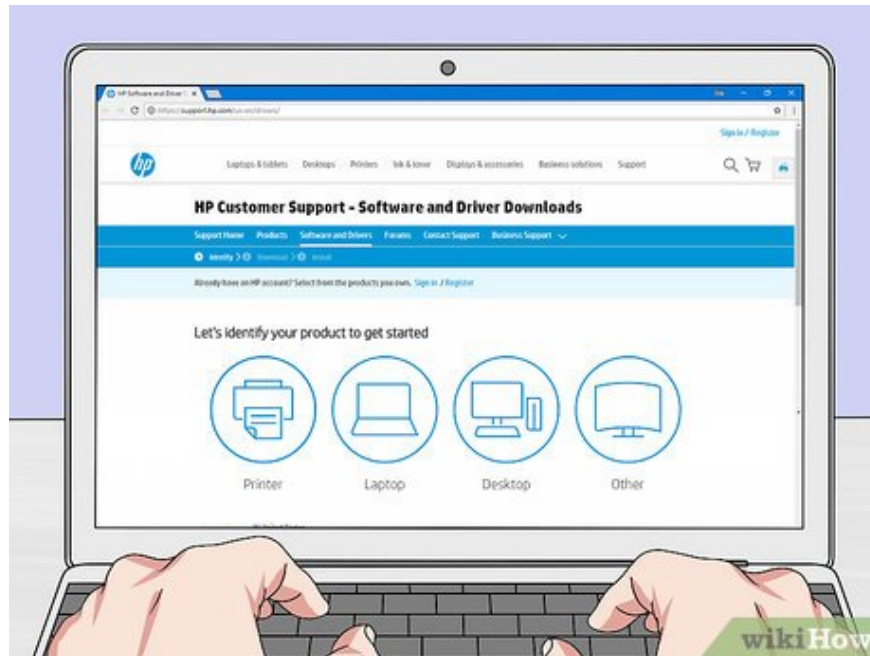
PCs must run Windows Vista or later, Mac computers must run OS X 10.5 (with Leopard) or later (with Macintosh).

The computer must be connected to an 802.11 b/g/n Wi-Fi router on a 2.4 GHz connection. HP devices no longer support 5.0GHz networks.

The computer's operating system must be under the control of the Wi-Fi network.

The computer must use a wireless connection to the network and operating system.

The computer must use a dynamic IP address, not a static one (if you haven't paid to use a static IP address, your IP address is most likely dynamic).



Find the printer's software. Go to <https://support.hp.com/us-en/drivers/> and enter your printer model number, click **Find** , and click **Download** next to the top software line.

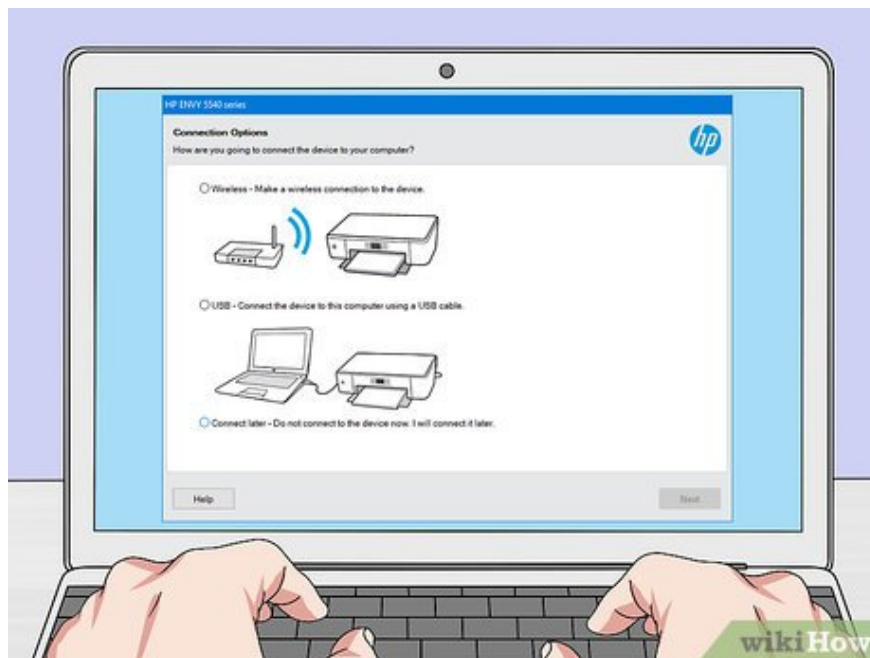


Double click the software file. The printer setup process opens.

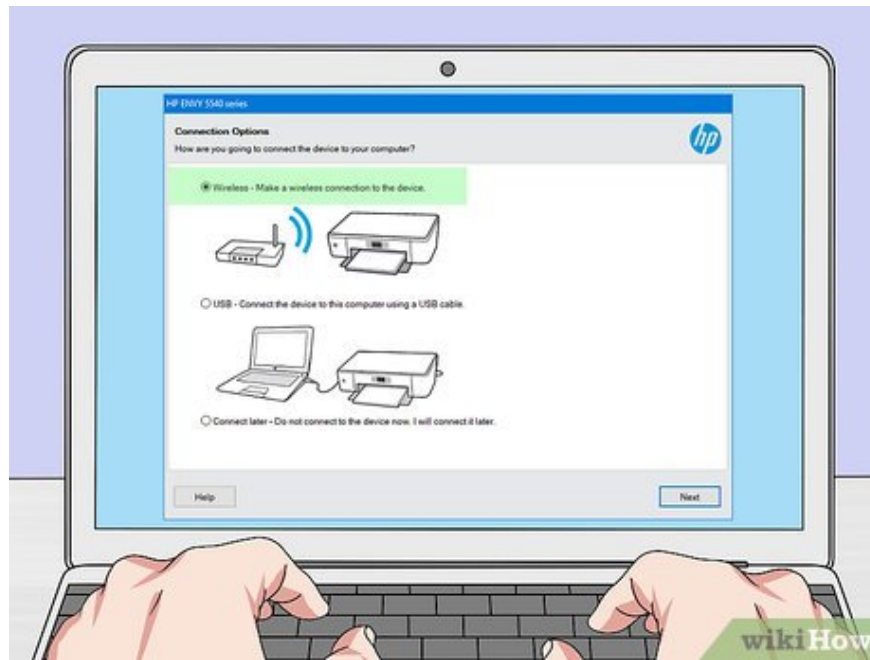


Turn on the printer. If the printer is compatible with HP Auto Wireless Connect, the device will be ready to connect.

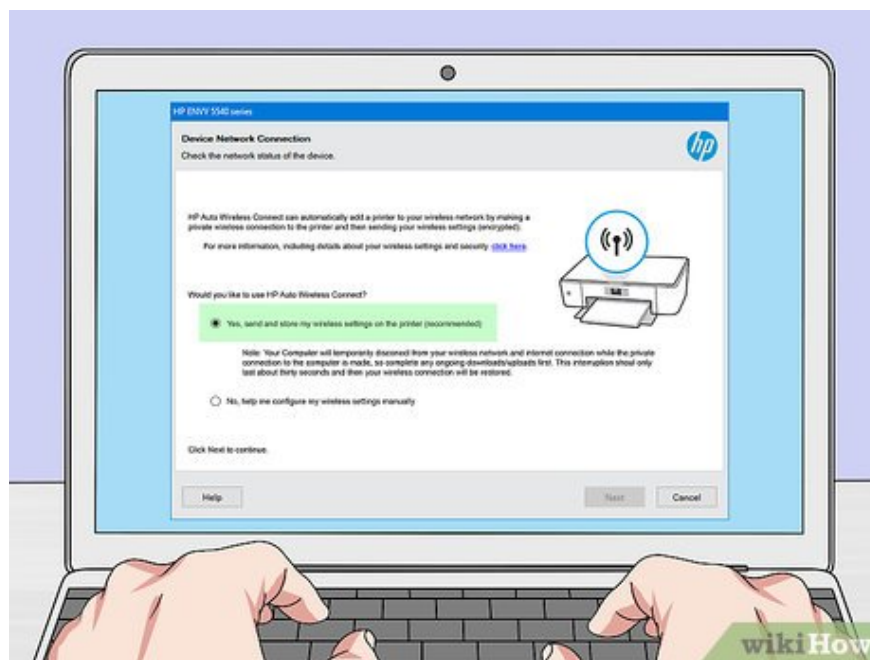
The printer will only maintain this setting for two hours.



Follow the on-screen instructions until you reach the "Network" section. The process will depend on the printer model and computer operating system.



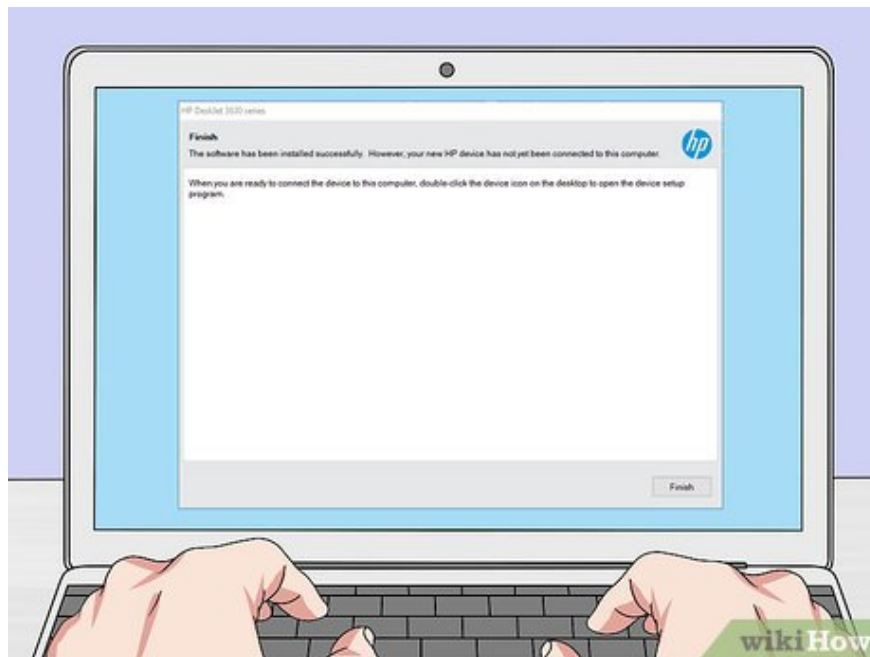
Select Network (Ethernet/Wireless) . This option is in the middle of the page.



Click Yes, send my wireless settings to the printer. The system will identify the printer and send Wi-Fi network information to the device.



Wait for the printer to connect. It may take a few minutes before the printer connects. You will then see a confirmation message appear on your computer screen.

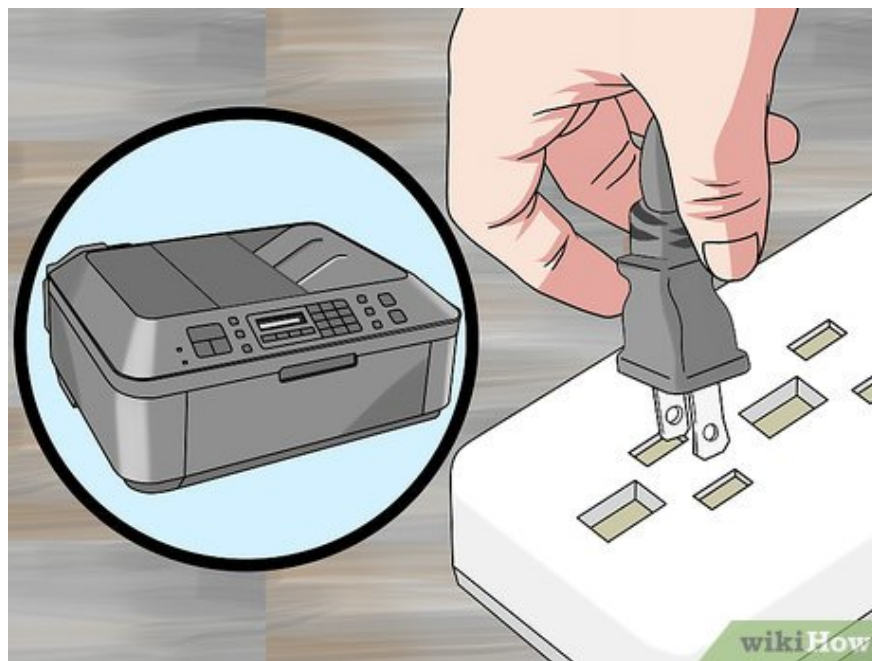


Complete the setup process. Follow the remaining on-screen instructions to complete the setup process. Once setup is complete, you can start using the printer.

Manual connection



The printer must be installed on the computer. In most cases, you simply connect the printer to your computer via a USB cable and allow the device's software to install, but many printers may come with an installation CD.



Turn on the printer. You need to make sure the printer is connected to the power source, then press the Power button.



Activate the touch screen if necessary. Some printers have touch screens that need to be folded or turned on separately.

If your printer doesn't have a touchscreen, you'll need to connect to Wi-Fi through the software setup process. If the printer was previously installed, you'll need to uninstall the device, then reinstall it to connect to Wi-Fi.



Select Setup . The location and icon of the option will vary depending on the printer, but most are shaped like a wrench or gear.

You may need to scroll down or right to find the **Setup** option .

You may also see a **Wireless** option . If so, just tap **Wireless** .

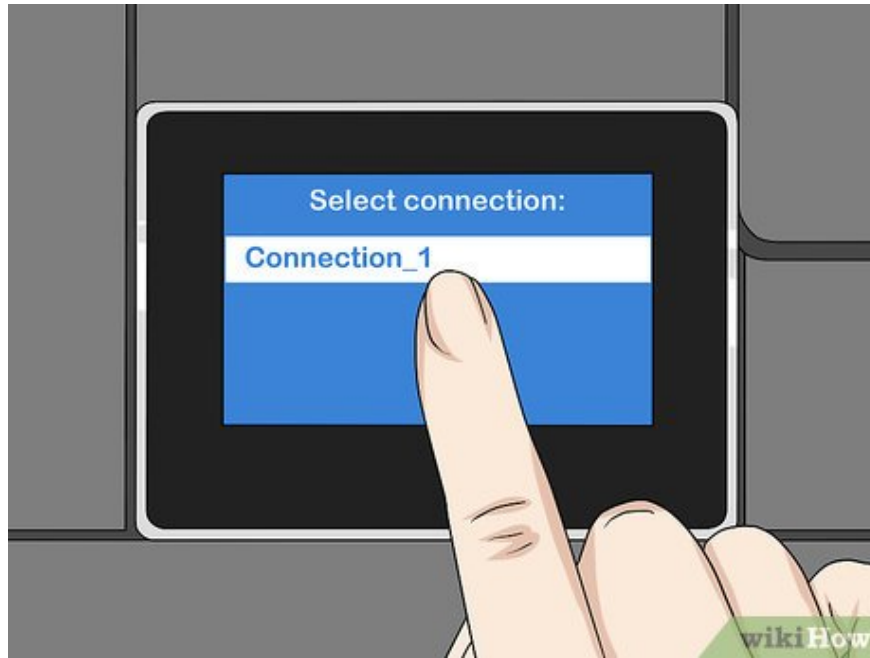


Select Network . Wi-Fi Settings opens.



Select Wireless Network Wizard . The printer will start searching for Wi-Fi networks.

Or you can choose **Wireless Setup Wizard** .



Select the network name. This will be the name you gave the Wi-Fi network when you created it.

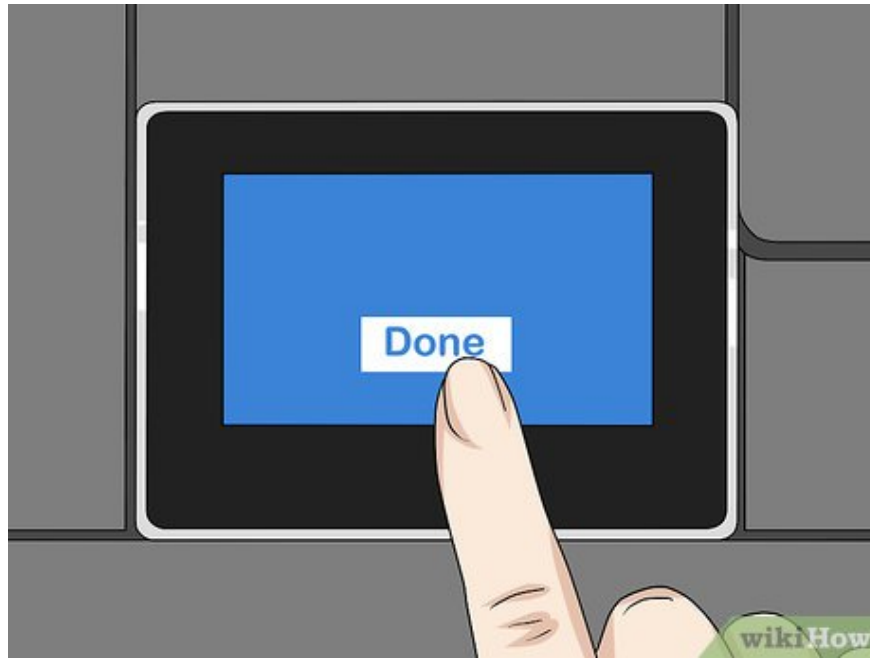
If you didn't name your network when setting it up, this will be a combination of the router's model number and the manufacturer's name.

If you don't see the network name, scroll to the bottom of the page, select the data field, and enter the network name.



Enter the network password. This is the password you use to log in to the Wi-Fi network.

If your router has a **WPS** button , you can hold it down for three seconds.



Select Done . Your login information will be saved. The printer will begin connecting to the network.



Select OK when it appears. You can now print via Wi-Fi network.

You finished reading the article "**How to Add an HP Printer to a Wi Fi Network**" edited by the [TipsMake](#) team. We hope this article has provided you with many useful tech tips and tricks. You can search for similar articles on tips and guides. Thank you for reading and for following us regularly.