

How to add a printer on Windows 11

Whether you own a wired printer that connects via a USB cable, a wireless printer on a WiFi network, or a Bluetooth printer, adding and setting up printing on Windows 11 is generally quite simple.

This article will show you how to add a printer on a Windows 11 PC

Add a printer on Windows 11

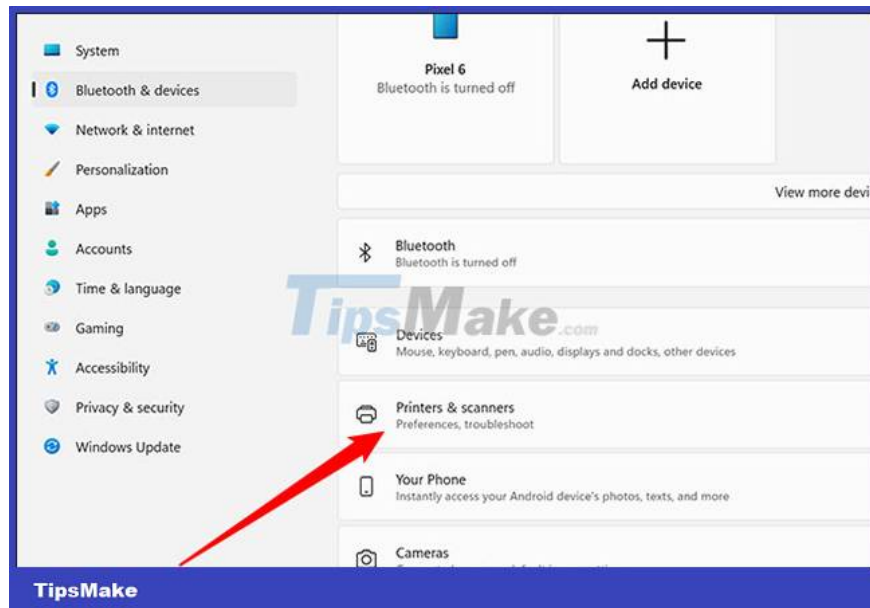
First, make sure your printer is powered on and plugged in if it's a traditional wired printer. For WiFi printers, make sure the device is connected to the same network as your computer.

Windows 11 automatically downloads the software your printer needs to work.

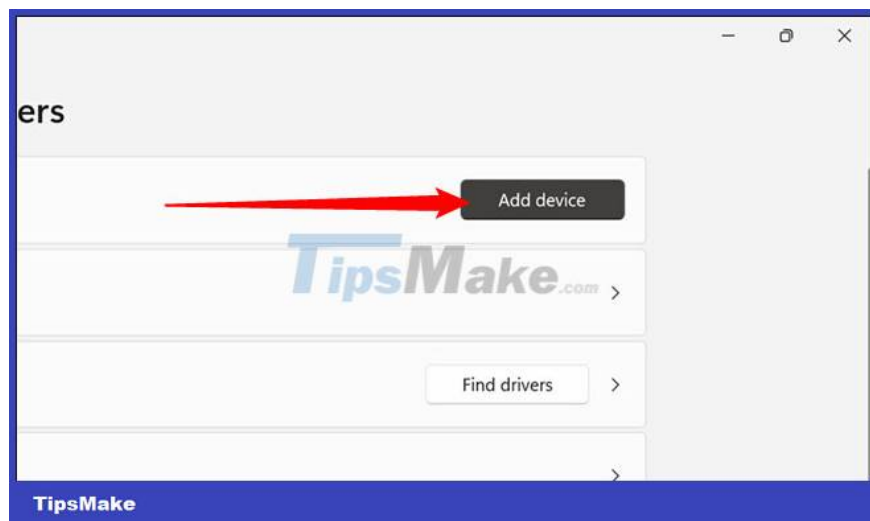
To add a printer to your Windows 11 system, first click on the Start button, enter the keyword 'Settings' in the search bar and press Enter. Alternatively, you can also press Windows + i to open the Settings app. On the left side of the Settings menu that opens, click 'Bluetooth & devices'.



On the next page, click 'Printers & scanners'.



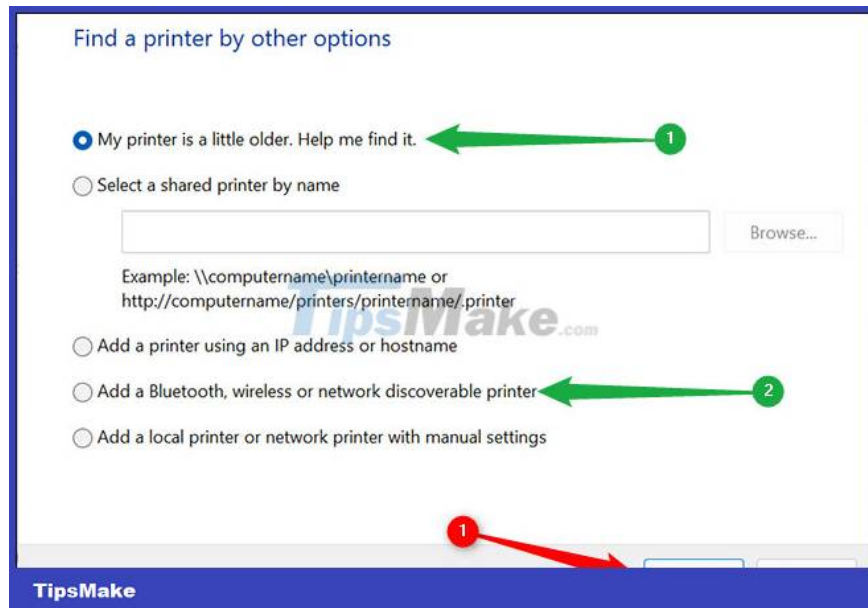
On the Printers & scanners page, click the 'Add device' button near the top right. It will take some time for Windows to try to detect your printer.



If your printer does not appear, click 'Add manually'. A pop-up window will pop up, showing you a few options.

Click on 'My printer is a little older. Help me find it' if you plug the printer into your computer. In case it is a wireless printer, select 'Add a Bluetooth, wireless or network discoverable printer'.

Once you've made your selection, click 'Next'.



If Windows 11 detects the printer, simply follow the onscreen suggestions to establish the connection.

Printer Troubleshooting

If unfortunately you are having trouble connecting the printer to your Windows PC, here are some remedies you can try.

Restart your Windows 11 PC

In some situations, you can restart your Windows 11 PC to fix problems, install updates, complete the installation process, or perform some other necessary tasks. If your printer is not detected or detected but not working correctly, restarting your PC may help resolve the issue.

Double check the instructions

Today's modern printer models often come with a lot of convenient extras, but they also come with possible problems with the setup process. Make sure that any setup instructions that came with the printer are followed closely, and that all connections to your computer are correct.

Manufacturer's driver

If your printer has advanced functions, or Windows 11 does not install the correct printer driver, you may need to manually download driver packages from the manufacturer. Use the installation disc that came in the printer's box, or visit the manufacturer's website to download the driver.

Wish you always have a good experience with your printer!

You finished reading the article "**How to add a printer on Windows 11**" edited by the [TipsMake](#) team. We hope this article has provided you with many useful tech tips and tricks. You can search for similar articles on tips and guides. Thank you for reading and for following us regularly.
