

# How to add a bot to the Discord server

Discord is a great way to chat with others. If you run your own Discord server, you'll most likely want to install the bot at some point. The bot can help you automate censorship, add points and leaderboards, listen to music with others, and more.

Today's article will guide you on how to add bots to Discord server.

## Where to find the Discord bot?

If you have programming knowledge, you can create your own Discord bot. However, it's a little tricky, so let's focus on finding available bots.

There are many different websites that list all of the publicly available Discord bots. The best of these are top.gg, Discord Bot List, and Bots on Discord.

On these sites, you can browse the Discord bots according to their functionality and popularity. You can learn more about the bot and then click on the invite / join / add option to bring the bot to the server.

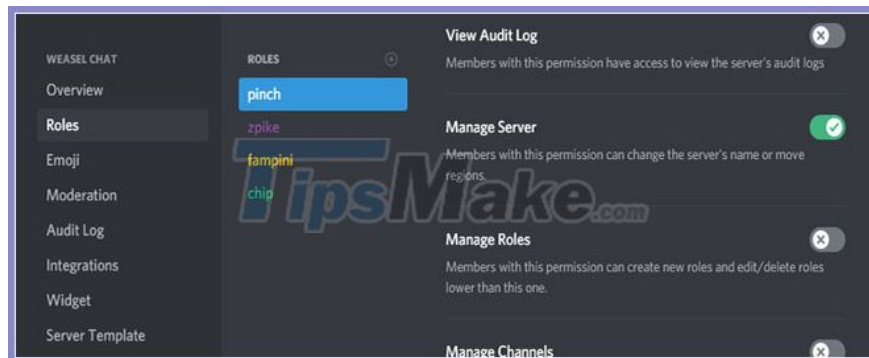
Many of the most popular Discord bots also have their own websites, like MEE6 and Carl Bot.

If you want more inspiration, check out the article: 6 best bots to improve Discord servers.

## How to add a bot to the Discord server

Here are all the steps you need to follow to add a bot to your Discord server.

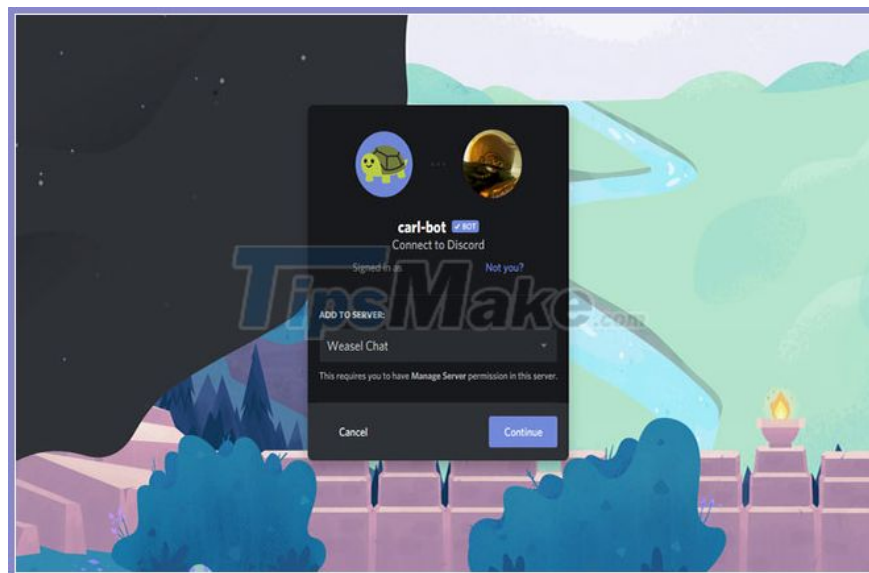
### 1. Check permissions



You can only add bots to servers for which you have the authority to do so, unless you own a server. This means that you must have "admin server" permission.

To add a bot to the server, click on the relevant hostname. If you see **Server Settings** on the drop-down menu, you have the correct permissions. If not, you will need to ask the authoritative side of the server to add bots or grant you "manage server" permission.

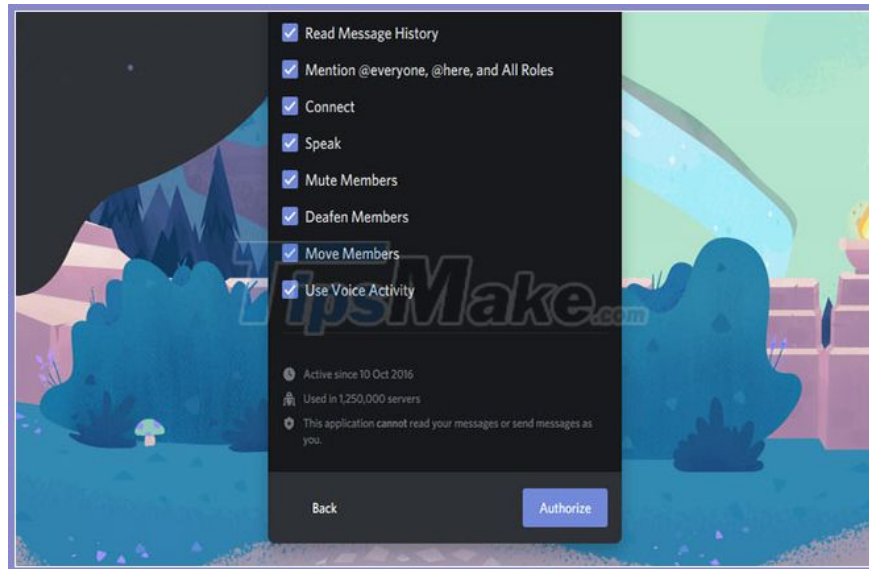
## 2. Invite bot



Next, you need to invite the bot to your server. The website where you are getting the bot from there must have a **Invite** button or other equivalent option. Taking Carl Bot as an example, that link is available in the top menu.

You will then be taken to the Discord page. Here, use the **Add to server** drop-down menu to select the server you want to add the bot to. Click **Continue**.

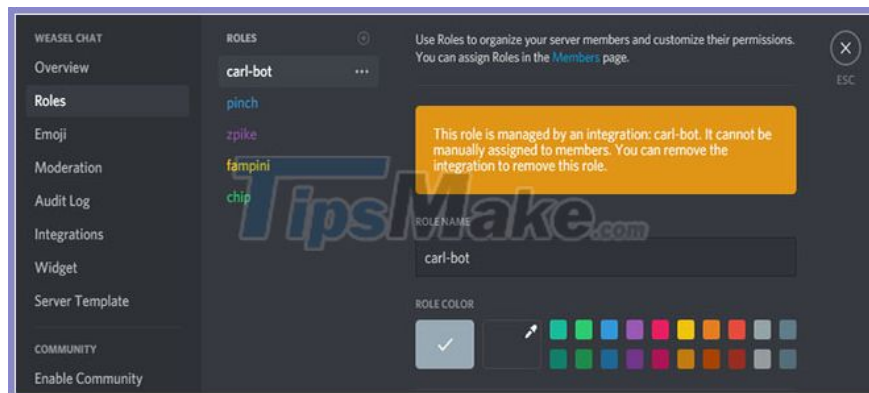
## 3. Authorize the bot



A screen will appear outlining all the permissions that the bot needs on your server. Advanced bots will need a lot of permissions to function properly, so don't worry about this. But pay attention to only add reputable bots to the server. Click **Authorize**.

You will likely need to complete reCAPTCHA verification to prove that you are not a bot yourself. Once completed, the bot will join your server. You will see it online in the members list.

#### 4. Adjust the role of bot on Discord



Most bots will automatically assign themselves a new role in the server with the permissions you agreed to in the previous step.

Click on the server name in the top left and click on **Server Settings**> **Roles** . In the **Roles** column , you will see the new role of the bot.

Left click and drag above all other options. This ensures that the bot can successfully manage other members on the server.

#### 5. Configure and use the Discord bot



Now that the bot is on the server, it's time to use it! The site from which you have added the bot should list documentation on how to use the bot.

Some advanced bots, like MEE6 and Carl Bot, can be managed from the website. They allow you to control bot features, check moderation logs and customize everything from one central, very user-friendly place.

However, most bots can only be managed and interacted using commands in text chat. Typically, typing **! Help** will assist the bot, although this may vary, depending on the type of bot you have added. If in doubt, contact the bot's developer for assistance.

One final note: Discord bots run on their own servers. While Discord is online and up and running, the bot can be independently deactivated. If you find that the bot is offline, it may be experiencing a temporary problem or being upgraded.

## How do I remove a Discord bot?

If the bot doesn't do what you want or you don't use it, the best way is to remove the bot from the server.

To do this, look to the right of the Discord server and look for the bot in the list of users. You can right-click on the bot and choose **Kick**.

Alternatively, click on the server name in the top left and click on **Server Settings > Integrations**. Under **Bots and Apps**, click **Manage** next to the bot, then choose **Remove Integration**.

You finished reading the article "**How to add a bot to the Discord server**" edited by the [TipsMake](#) team. We hope this article has provided you with many useful tech tips and tricks. You can search for similar articles on tips and guides. Thank you for reading and for following us regularly.