

How to activate a self-destruct PIN on Windows 10

Using a login PIN on a computer is one of the system security features, in addition to using a password. Besides, you can use the self-destruct PIN feature.

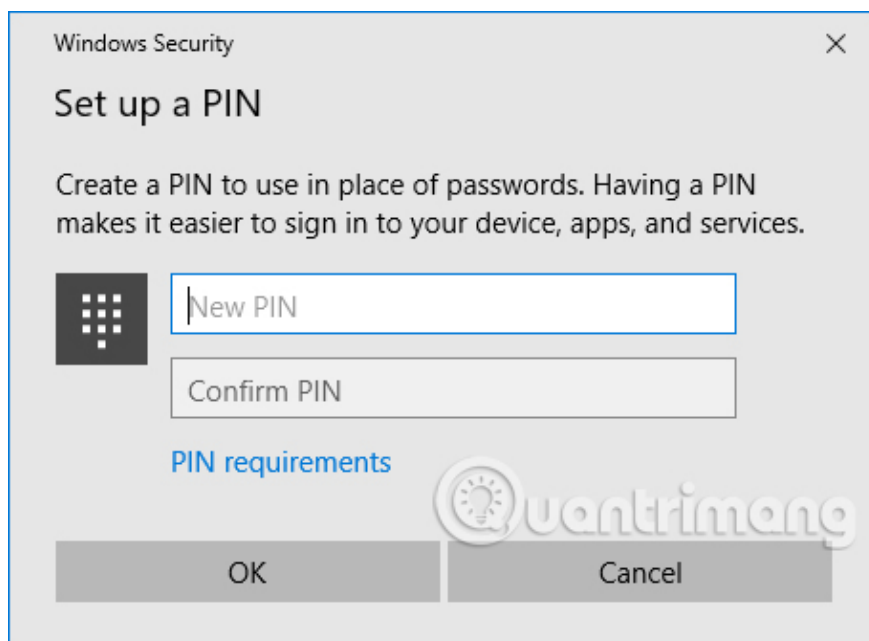
To prevent unauthorized access to the computer, setting a password is a basic and necessary operation with any personal computer. Besides, we are also advised to regularly change the system security password. And in addition to using passwords, many people choose to use PINs to log in computers more quickly, but still ensure high security for computers.

Besides, we can use the self-destruct PIN feature, without having to manually delete the previously set PIN. Users will set a time period for PIN access to Windows 10 to work, then automatically disappear. The following article will show you how to set up your Windows 10 PIN to cancel.

First of all, you need to enable PIN mode on the computer system. Press **Windows + I** key combination to open the Windows Settings interface. Then, access **Account** and then select **Settings**.

In the setup interface, click on **Sign-in options**. At **the PIN section**, click **Add**. You will be asked for your computer access password to continue setting up your PIN. Finally, **enter your PIN** and click **OK** to save.

Please refer to how to do details in the Instructions for creating pin code in Windows 10.



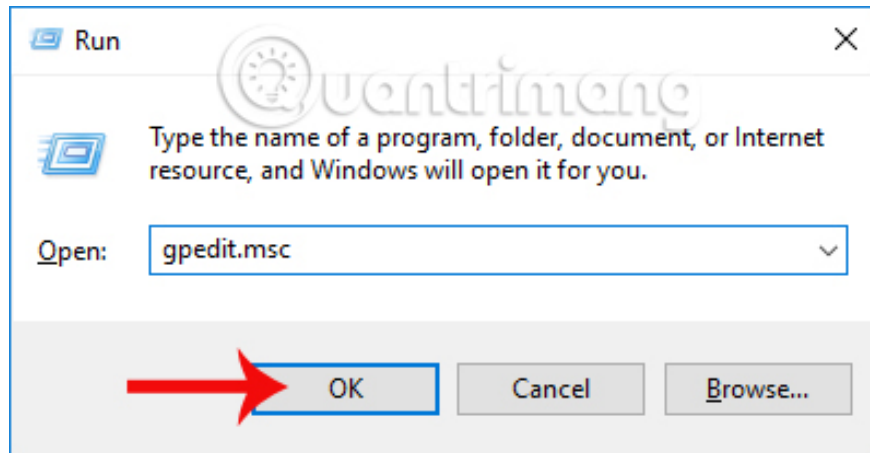
Then, when we created the login PIN, we proceeded to set up a PIN code to automatically cancel on the system.

Method 1: Use Group Policy

How to use Group Policy to set up a self-destruct PIN will apply to **Windows 10 Pro, Enterprise and Education** .

Step 1:

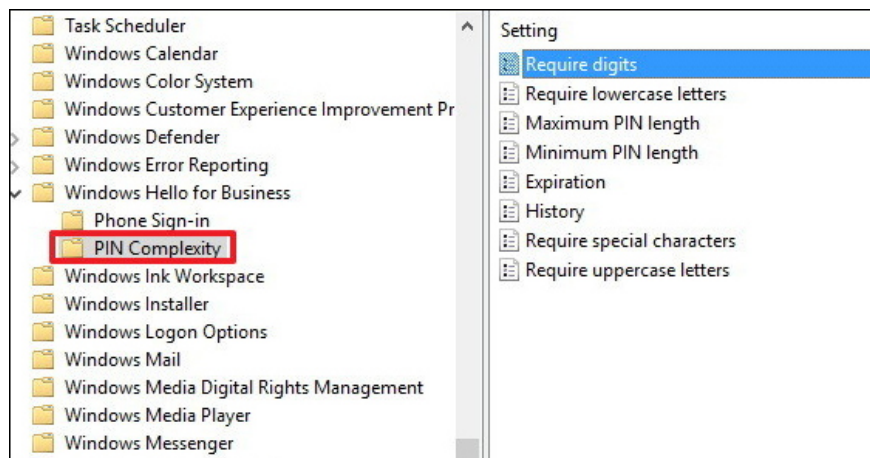
We press **Windows + R** key combination to open the Run window and enter the **keyword gpedit.msc** . Click **OK** to open Group Policy.



Step 2:

In the Local Group Policy Editor window, on the left side of the screen, we will access the link below.

Computer Configuration Administrative Templates Windows Components Windows Hello for Business PIN Complexity.



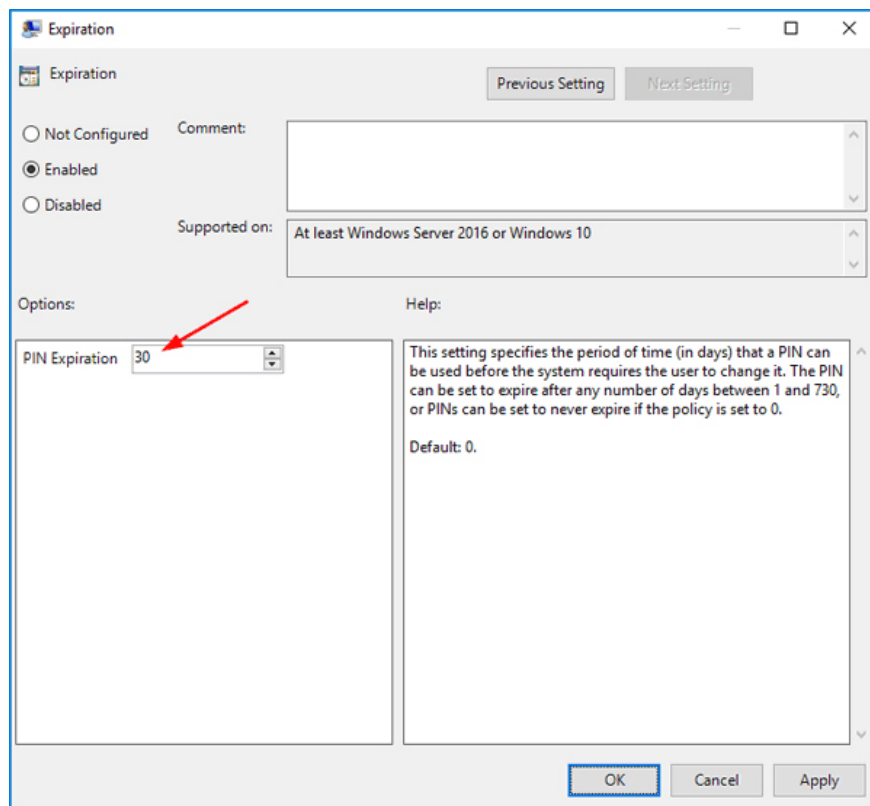
Next, look at the right content and double click on the **Expiration** .

Require lowercase letters	Not configured	No
Maximum PIN length	Not configured	No
Minimum PIN length	Not configured	No
Expiration	Not configured	No
History	Not configured	No
Require special characters	Enabled	No
Require uppercase letters	Not configured	No

Step 3:

Switch to Expiration dialog interface. Here you will proceed to activate the self-destruct PIN code. Check the box **Enable** . Looking at the Options section, we will **enter the operation time for the PIN code into the PIN Expiration frame** . The duration herein will be calculated by the number of days. We choose the time for the PIN to work for a minimum of 1 day and a maximum of 730 days.

Then **click OK** below to save and restart the computer for the changes to take effect on the system.

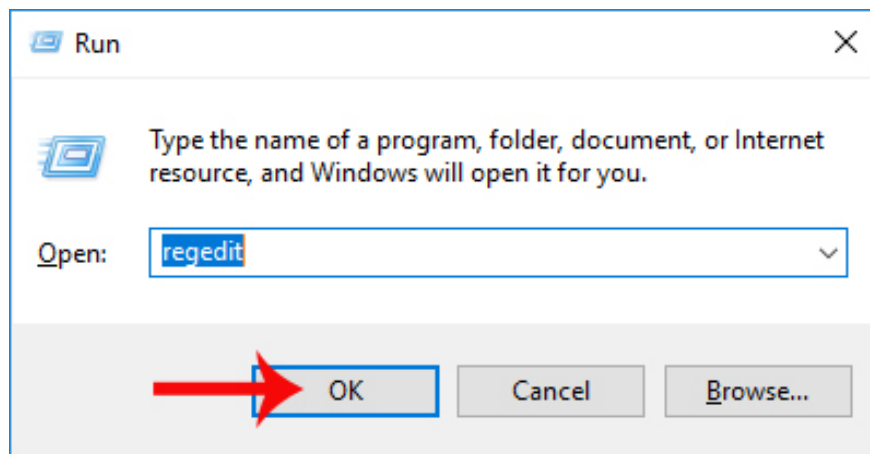


Method 2: Use Registry Editor

With **Windows 10 Home** , we will set up a self-destruct PIN via Registry Editor.

Step 1:

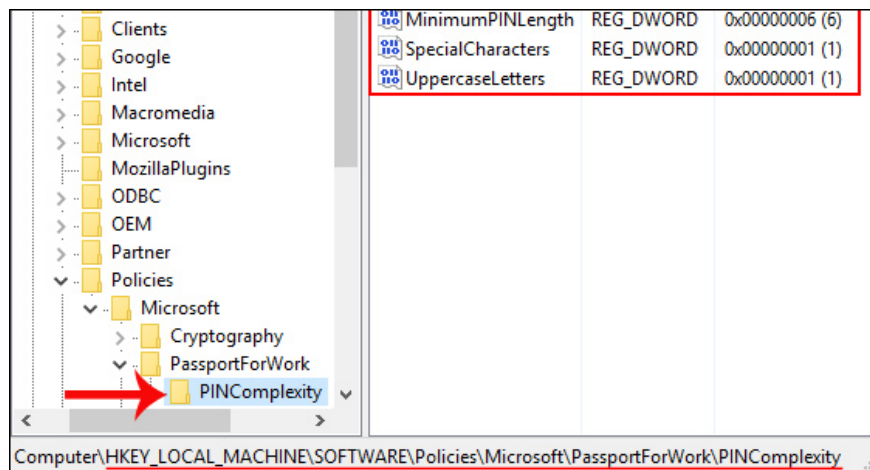
Open the **Run dialog box** and enter the **keyword regedit** , click **OK** to access.



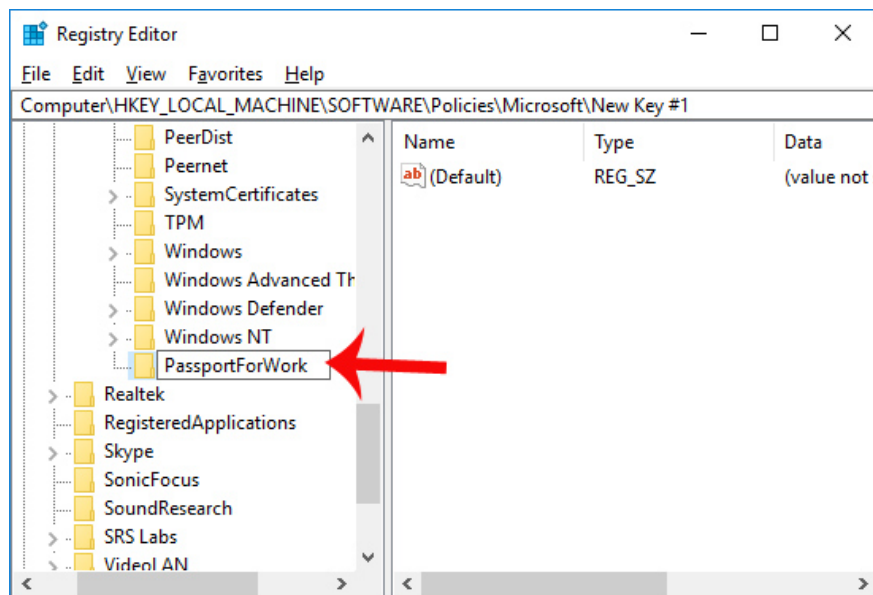
Step 2:

Then, access the Registry Editor interface to access the directory path according to the instructions below.

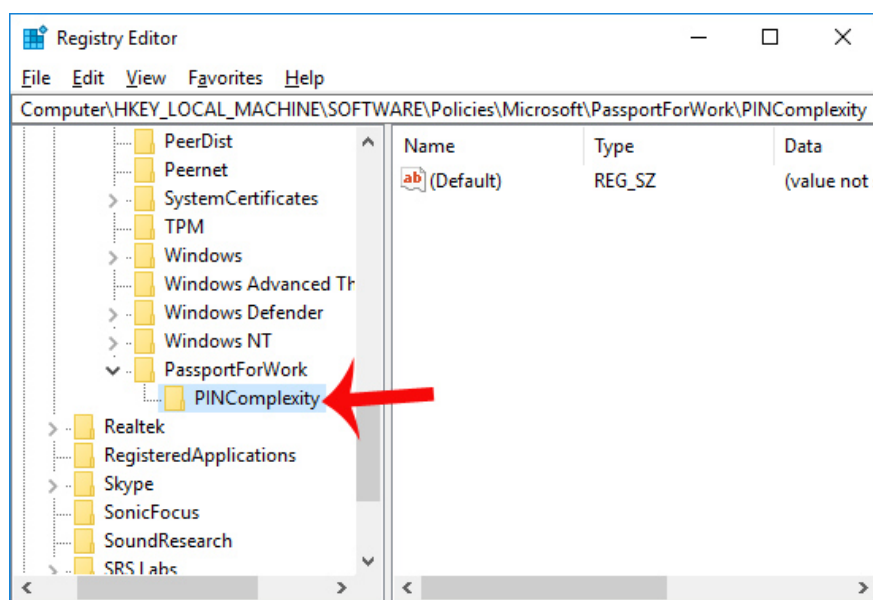
HKEY_LOCAL_MACHINE SOFTWARE Policies Microsoft PassportForWork PINComplexity.



Note to users without PassportForWork, right-click **the Microsoft key** , select **New> Key** and then name PassportForWork and press Enter.



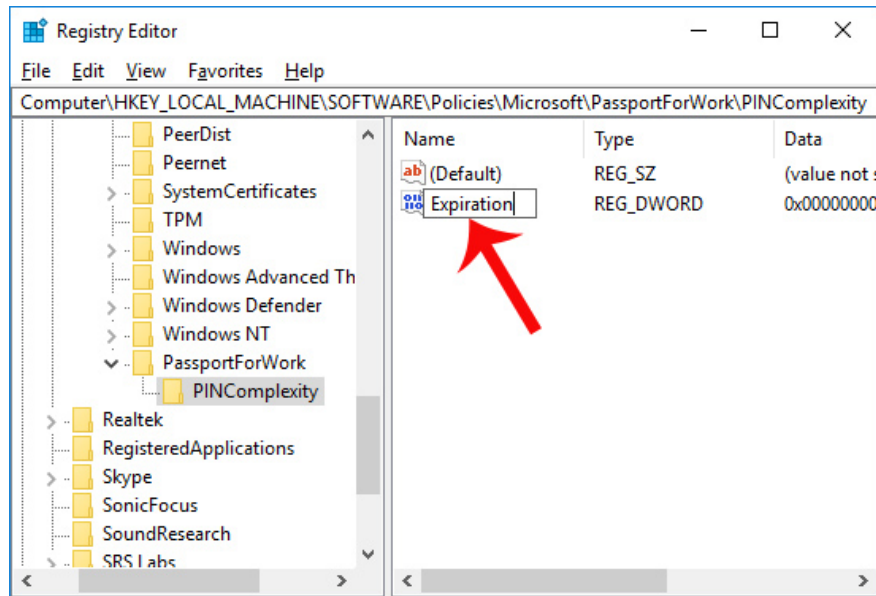
Next, right-click on the PassportForWork key, select **New> Key** and then **name the new key PINComplexity** and press Enter.



Step 3:

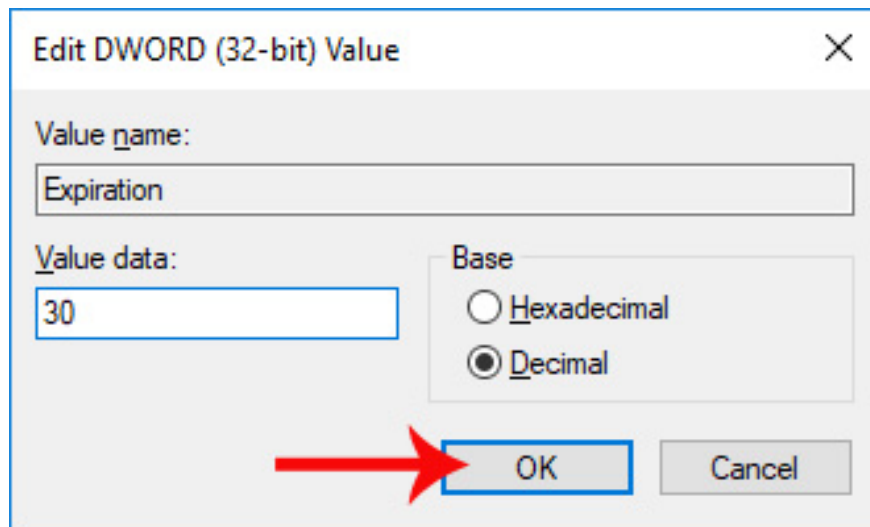
Look to the right content and double click on the Expiration key.

If this **key is not available** , right-click the PINComplexity key, select **New> DWORD (32-bit) Value** and name the **Expiration** .



In the dialog box to customize the value of the key Expiration, select **the Decimal item** . Then at **Value data** customize **the self-destruct time of the PIN** in about 1 to 730 days.

Click **OK** to save and also restart the computer.



Above are the steps for setting up Windows 10 login PIN code to cancel after a period of time, which the user chooses. Depending on the version of Windows 10 you are using is a Pro version or Home edition, which we choose to do via Group Policy or Registry Editor accordingly.

I wish you all success!

You finished reading the article "**How to activate a self-destruct PIN on Windows 10**" edited by the [TipsMake](#) team. We hope this article has provided you with many useful tech tips and tricks. You can search for similar articles on tips and guides. Thank you for reading and for following us regularly.