

# How to access Safe Mode Windows 10 on startup

There are many ways to enter Safe Mode on Windows 10, in case you cannot access Windows and access it. To enter Safe Mode Windows 10 when starting the computer, please refer to the following article of Network Administrator.

Safe Mode disables unnecessary applications and drivers (drivers) that are uploaded during system startup, so you can determine if the above applications or drivers are raw. cause the problem or not.

As with previous Windows versions (Windows 7, Windows 8 .) Windows 10 also integrates Safe Mode, useful for diagnosing and troubleshooting problems related to hardware, software and systems. operating.

There are many ways to enter Safe Mode on Windows 10, in case you cannot access Windows and access it. To access Safe Mode of Windows 10 when booting Win 10 computer, please refer to the following article of Network Administrator.

Note: Safe Mode is not BIOS, if you are trying to enter the BIOS, please refer to this tutorial:

1. Instructions for entering BIOS on different computers
2. How to enter BIOS (UEFI) on Windows 10

## Summary of how to access Safe Mode Windows 10

1. Part 1: How to access Safe Mode Windows 10 when you cannot access Windows
2. Part 2: Enter Safe Mode Windows 10 on startup
  1. Use the System Configuration utility
  2. Use Advanced Startup
  3. Use Recovery drive
  4. Start Windows 10 in Safe mode from Start Menu
  5. Start Windows 10 in Safe Mode from the Login screen
3. Part 3: How to get rid of Safe Mode on Windows 10?

## Part 1: How to access Safe Mode Windows 10 when you cannot access Windows

On Windows 7 you will press the F8 key before Windows is loaded to open the Advanced Boot Options window, where you can choose to start Windows 7 in Safe Mode.

On Windows 10, you can press **Shift + F8** or **F8** before Windows starts loading to enter recovery mode and access Safe Mode from here.

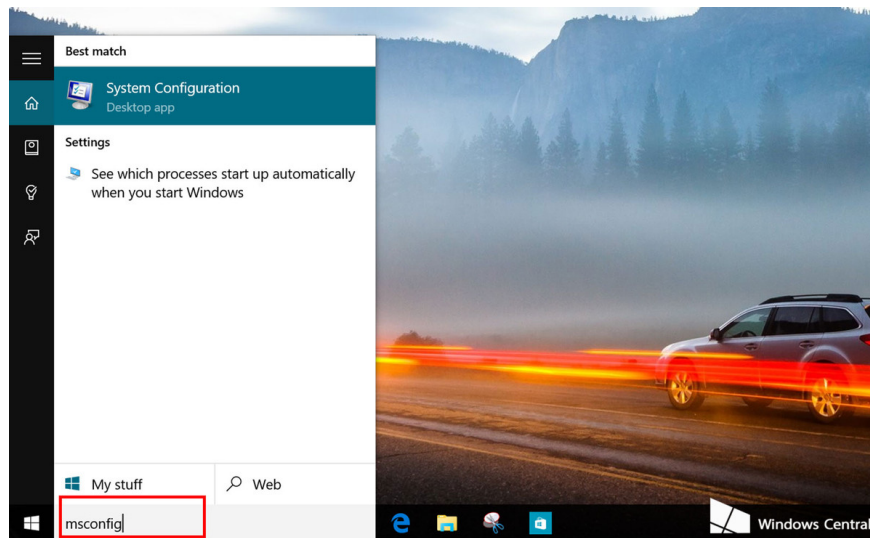
Note that, if you have a modern computer, with UEFI BIOS and fast SSD, it is difficult to interrupt the boot process with the shortcut key combination. This is useful for computers with classic BIOS, using more HDD. However, you can try it, maybe luckily.

1. How to check if Windows boots in UEFI or Legacy BIOS mode?

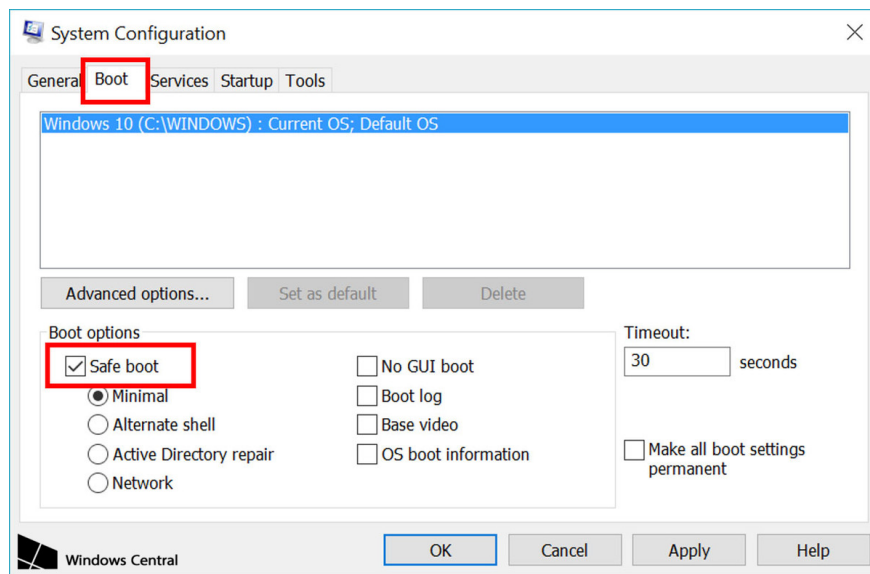
## Part 2: Enter Safe Mode Windows 10 on startup

### 1. Use the System Configuration utility

**Step 1:** First type **msconfig** in the Search box on the Taskbar to open System Configuration.



**Step 2:**



In System Configuration, you switch to the **Boot** tab, under the **Boot Options** section, select one of the four available options, including:

1. **Minimal** : Enter Safe Mode with the minimum number of drivers and services but still use the familiar Windows graphical interface. Network connection is disabled.
2. **Alternate Shell** : If you are familiar with Command Prompt, you can choose this mode. Network connection and File Explorer are disabled.
3. **Active Directory Repair** : Enter Safe Mode with access to specific information on the computer, such as hardware devices. If you don't successfully install new hardware, such as Active Directory, Safe Mode will be used to restore system stability by repairing corrupted data or adding data to the directory.
4. **Network** : Enter Safe Mode with the necessary services and drivers for networking, using the Windows graphical interface. Network connection is enabled.

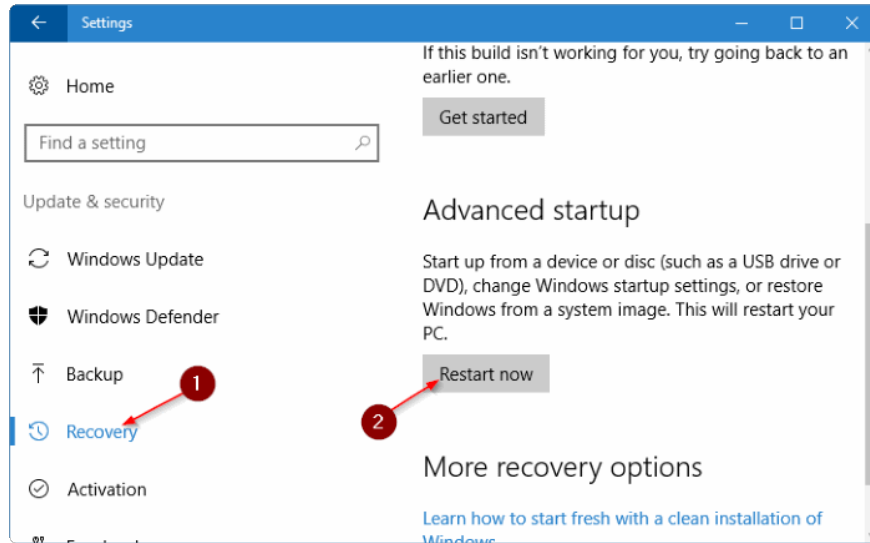
**Step 3:** Click **Apply** then click **OK**. Next proceed to restart your computer.

**Step 4:** After restarting the computer, you can troubleshoot problems related to hardware, software and operating system . in Safe Mode.

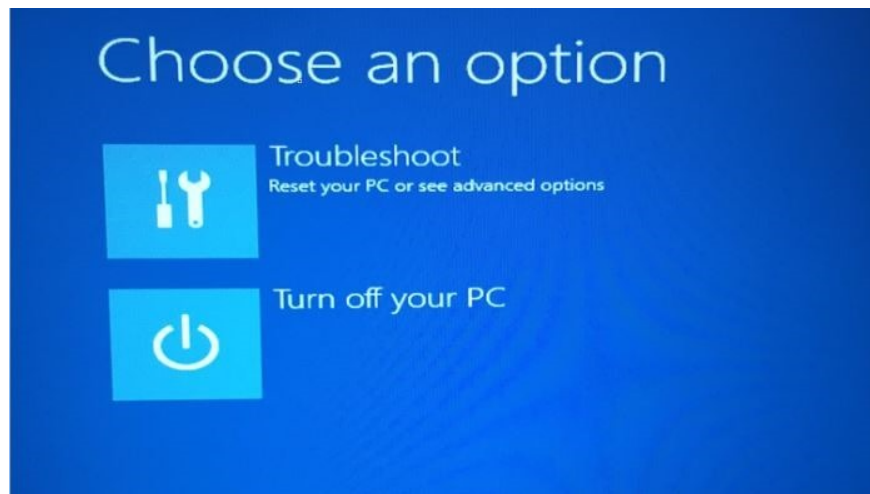
## 2. Use Advanced Startup

**Step 1:** Open the Settings application, then navigate to **Update & security => Recovery** .

**Step 2:** At Advanced startup, click **Restart now** to restart your computer.



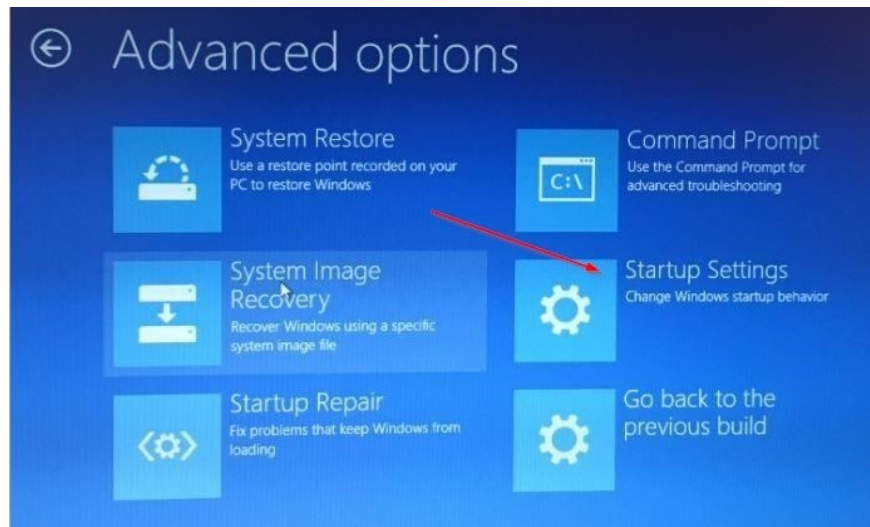
**Step 3:** When your computer restarts, you will see the **Choose an option** screen. Here, click on **Troubleshoot**.



**Step 4:** Next on the Troubleshoot screen, click **Advanced options**.



**Step 5:** Next on the Advanced options screen, click on **Startup settings** .



**Step 6:** Finally on the Startup Settings screen, click **Restart** to restart your computer.



**Step 7:** After the computer has finished booting, on the screen you will see the Safe Mode option. Press **F4** or **4** to start Windows 10 in Safe Mode.

# Startup Settings

Press a number to choose from the options below:

Use number keys or functions keys F1-F9.

- 1) Enable debugging
- 2) Enable boot logging
- 3) Enable low-resolution video
- 4) Enable Safe Mode
- 5) Enable Safe Mode with Networking
- 6) Enable Safe Mode with Command Prompt
- 7) Disable driver signature enforcement
- 8) Disable early launch anti-malware protection
- 9) Disable automatic restart after failure

Press F10 for more options

Press Enter to return to your operating system

### 3. Use Recovery drive

**Step 1:** Connect the recovery drive (recovery drive) to your computer and turn on the computer.

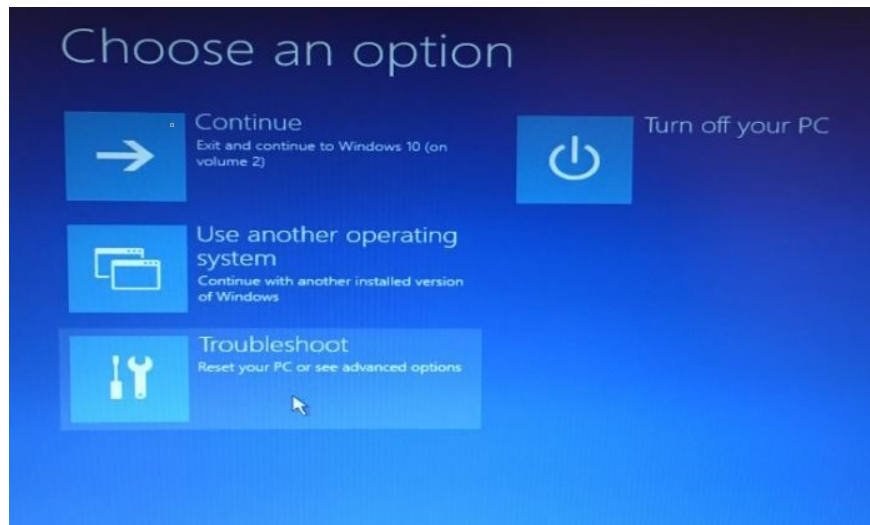
**Step 2:** When you see the screen Choose your keyboard layout, click on the layout to see the Choose an option screen.

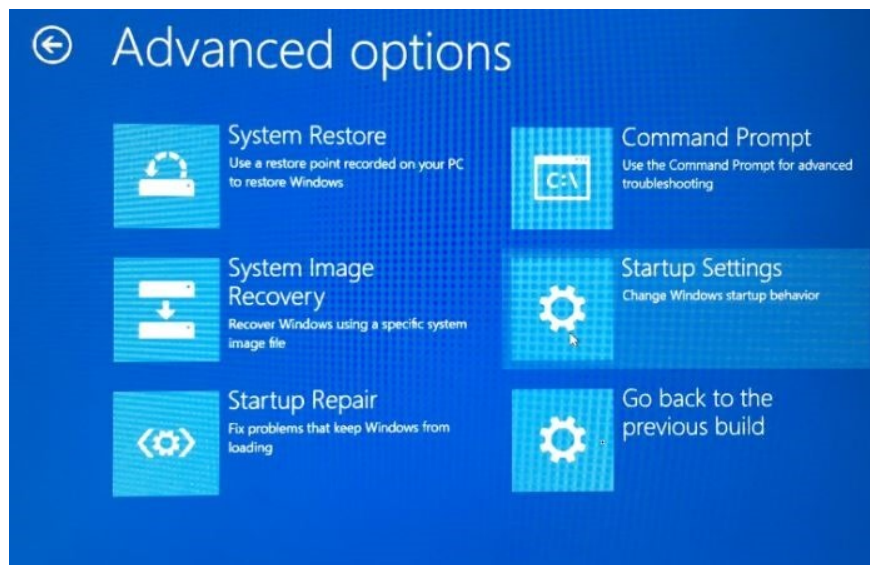
## Choose your keyboard layout

- US
- Albanian
- Arabic (101)
- Arabic (102)
- Arabic (102) AZERTY
- Armenian Eastern (Legacy)
- Armenian Phonetic
- Armenian Typewriter
- Armenian Western (Legacy)
- Assamese - INSCRIPT
- Azeri Cyrillic
- Azeri Latin

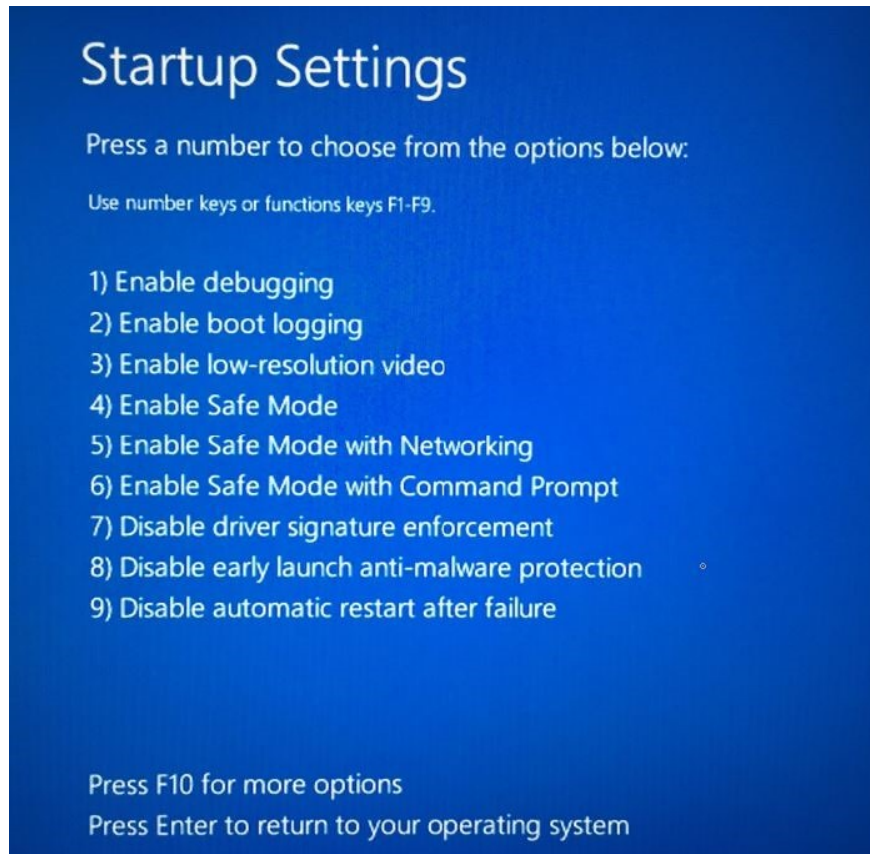
See more keyboard layouts

**Step 3:** When the Choose an option screen appears, click **Troubleshoot** => **Advanced options** => **Startup settings** => **Restart** to restart your computer.





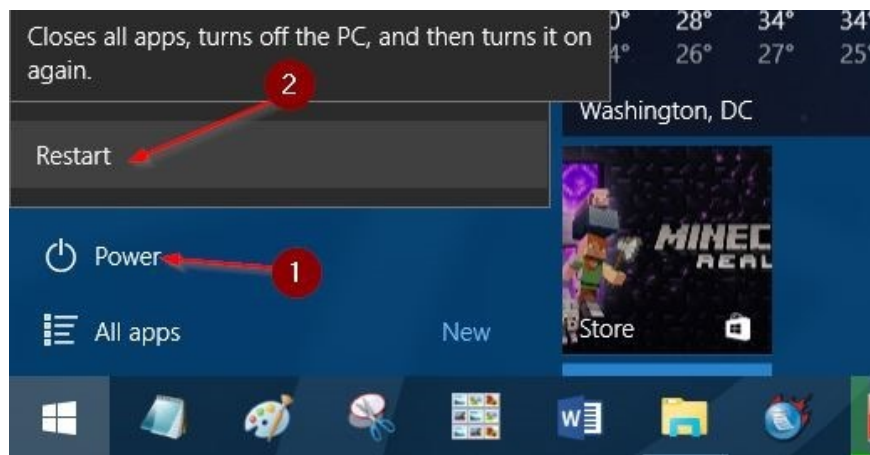
**Step 4:** When you see Safe mode options screen, press **F4** or **4** key to start Windows in Safe Mode.



#### 4. Start Windows 10 in Safe mode from Start Menu

**Step 1:** Open Start Menu, then click **Power** button.

**Step 2:** Press and hold the **Shift** key , then click **Restart**.



**Step 3:** Now you will see the Choose an option screen. At that point, click on **Troubleshoot**.

**Step 4:** Next on the Troubleshoot screen, click **Advanced options** .

**Step 5:** Next on the Advanced options screen, click on Startup settings.

**Step 6:** Finally on the Startup Settings screen, click **Restart** to restart your computer.

**Step 7:** After the computer has finished booting, on the screen you will see the Safe Mode option. Press **F4** or **4** to start Windows 10 in Safe Mode.

## 5. Start Windows 10 in Safe Mode from the Login screen

### Step 1:

When in Login login screen or Sign-in screen, click on **Power** button , then press and hold **Shift** and click **Restart** .



**Step 2:** After your computer has finished booting, you will see the Choose an option screen. At that point, click on **Troubleshoot**.

**Step 3:** Next on the Troubleshoot screen, click **Advanced options**.

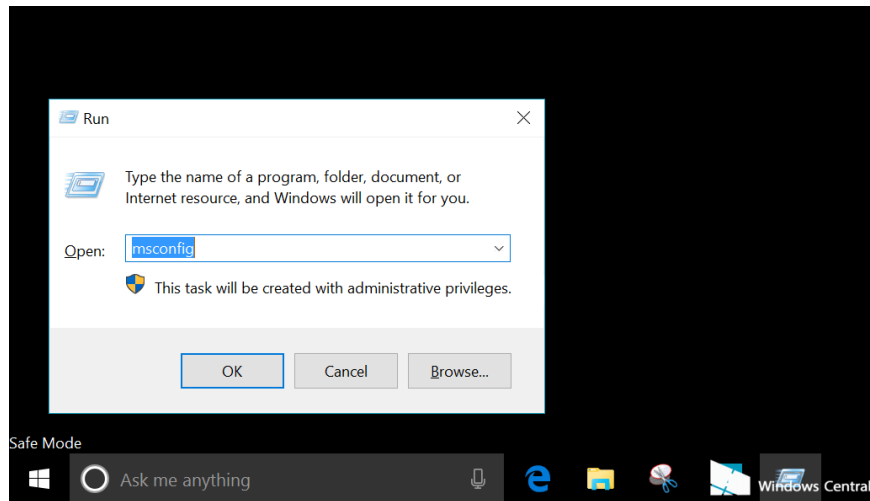
**Step 4:** Next on the Advanced options screen, click on **Startup settings**.

**Step 5:** Finally on the Startup Settings screen, click **Restart** to restart your computer.

**Step 6:** After the computer has finished booting, on the screen you will see the Safe Mode option. Press **F4** or **4** to start Windows 10 in Safe Mode.

## Part 3: How to get rid of Safe Mode on Windows 10?

**Step 1:** To exit Safe Mode, first open **System Configuration** by opening the **Run** window (press **Windows + R** key combination), then enter **msconfig** in the Run window and select **OK**.



**Step 2:** Click on the Boot tab, then uncheck the **Safe boot** option box, select **Apply** and then click **OK**. Proceed to restart your computer to exit Safe Mode.

You can refer to some of the following articles:

1. How to view saved Wifi passwords on Windows 7/8/10
2. Instructions for using Sysprep on Microsoft Windows 7/8/10
3. How does Windows 7, 8 not automatically upgrade to Windows 10?
4. 4 ways to reset the Windows computer to its original state

Good luck!

You finished reading the article "**How to access Safe Mode Windows 10 on startup**" edited by the [TipsMake](#) team. We hope this article has provided you with many useful tech tips and tricks. You can search for similar articles on tips and guides. Thank you for reading and for following us regularly.