

How to access Safe Mode on Windows 11

If you are having trouble launching your Windows 11 PC, you can try restarting the system in Safe Mode.

In this mode, drivers and features on the system will be temporarily disabled to help your PC operate more stably. Here's how.+

Access Safe Mode at system startup

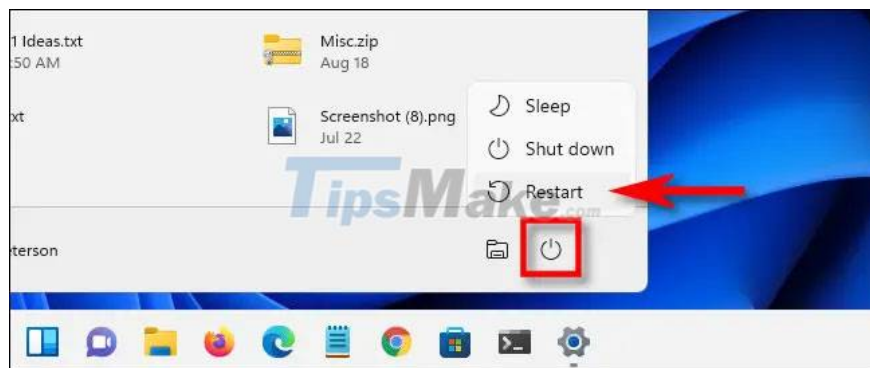
For Windows 7 and earlier, users can usually access Safe Mode by pressing a specific function key (such as F8) as soon as the PC is starting up. However, Microsoft removed this feature starting with Windows 8 because thanks to new technologies, Windows PC boot time has now become so fast that users can't even press the function key to access Safe. Mode, Windows has finished downloading.

Instead, Microsoft designed an "automatic failover" solution for cases where the PC crashes and Windows doesn't load properly. Your PC will automatically go into troubleshooting mode if it can't be started twice in a row. You can do this by powering on your PC, then pressing the physical power button as soon as you see the manufacturer's logo appear. Do this twice and you will see the 'Choose an Option' advanced startup screen appear on the screen. Then follow the instructions described in the section below to enter Safe Mode.

How to access Safe Mode Windows 11

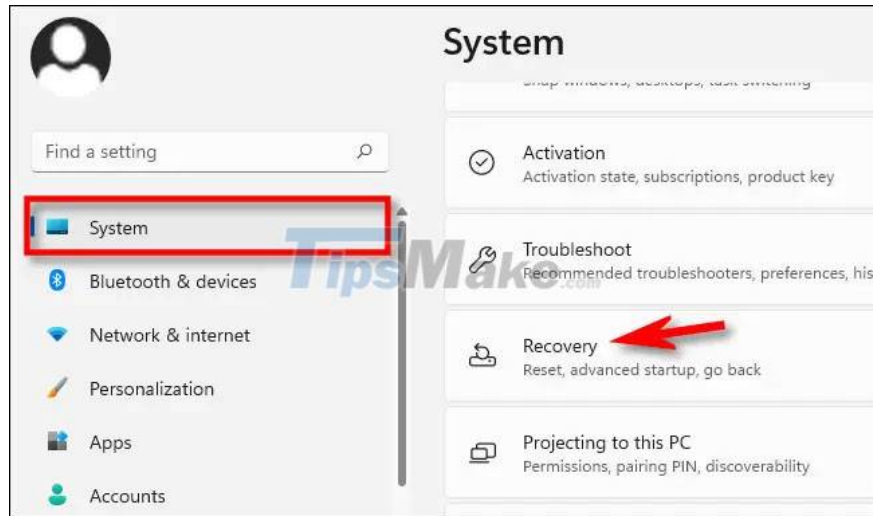
There are several different ways for you to start your computer in 'Advanced Startup' mode, thereby accessing 'Safe Mode' on Windows 11.

The simplest way is to open the Start menu and click on the power button icon in the bottom right corner. Then hold down the Shift key on your keyboard and click 'Restart'.

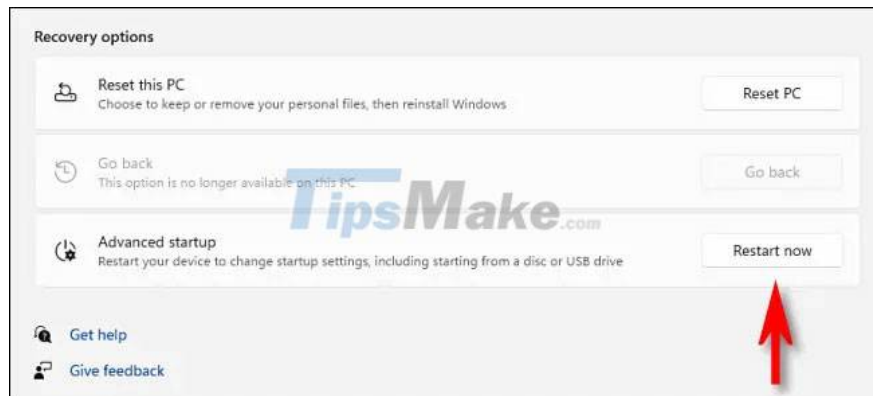


In addition, another 'more cumbersome' way is through the Settings application. First, press the Windows + i key combination to open the Settings application. When the Settings interface opens, click on the 'System' item, then

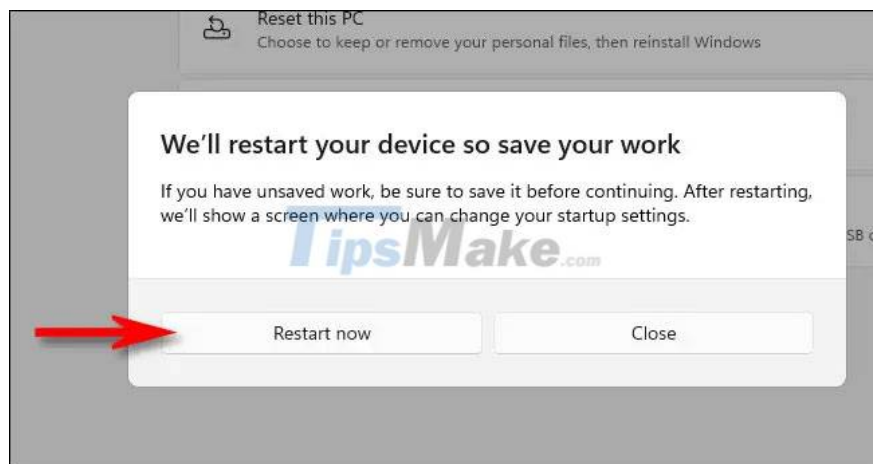
select 'Recovery'.



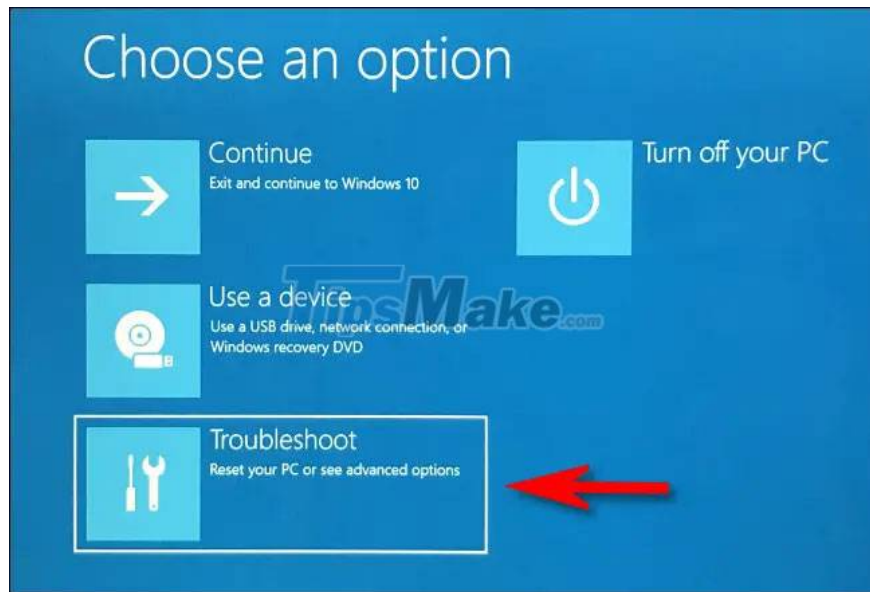
On the Recovery settings page, find the 'Advanced Startup' option and click the 'Restart Now' button next to it.



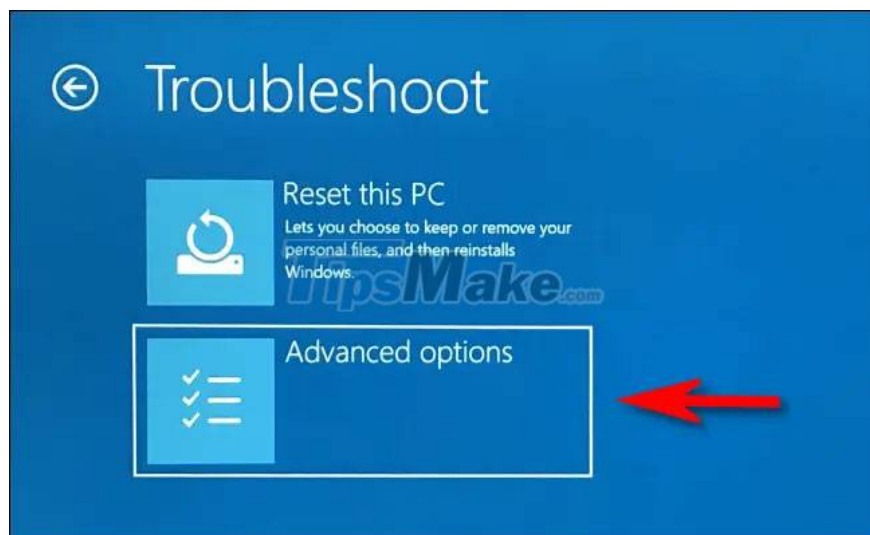
Windows will confirm with a pop-up dialog asking you to save your work before restarting. When you're ready, click 'Restart Now'.



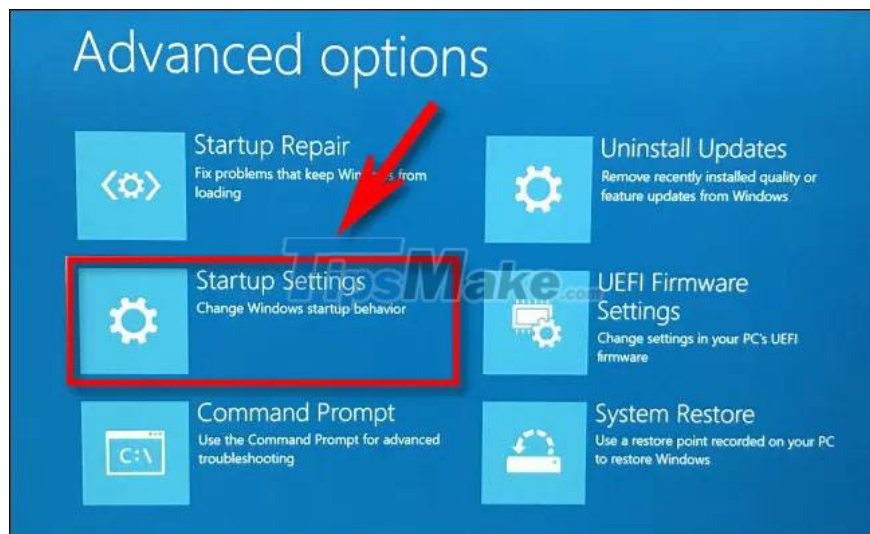
Windows will then shut down and restart on a blue screen titled 'Choose an Option', with a few options available. Click on 'Troubleshoot'.



On the Troubleshoot page, click 'Advanced Options'.



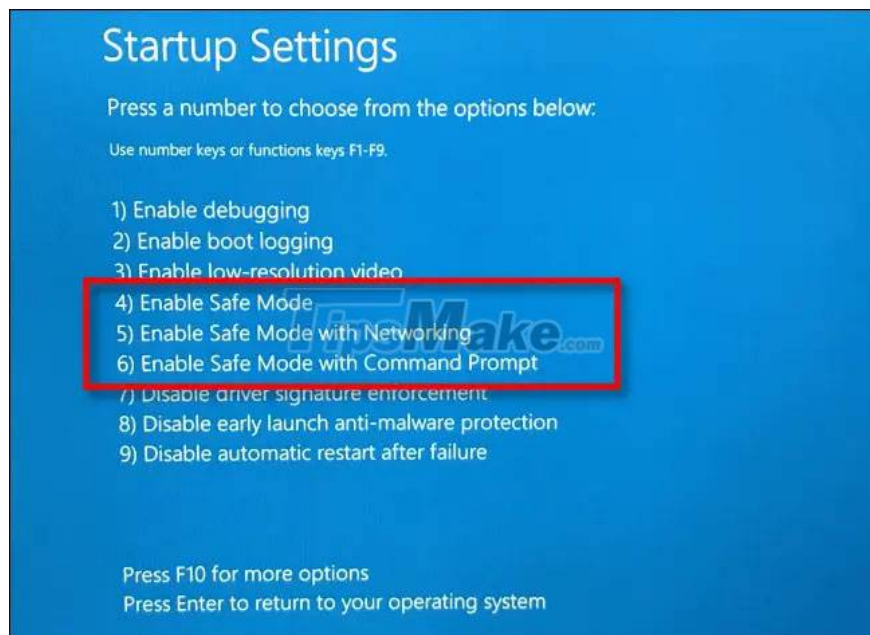
On the Advanced Options page, click on 'Startup Settings'.



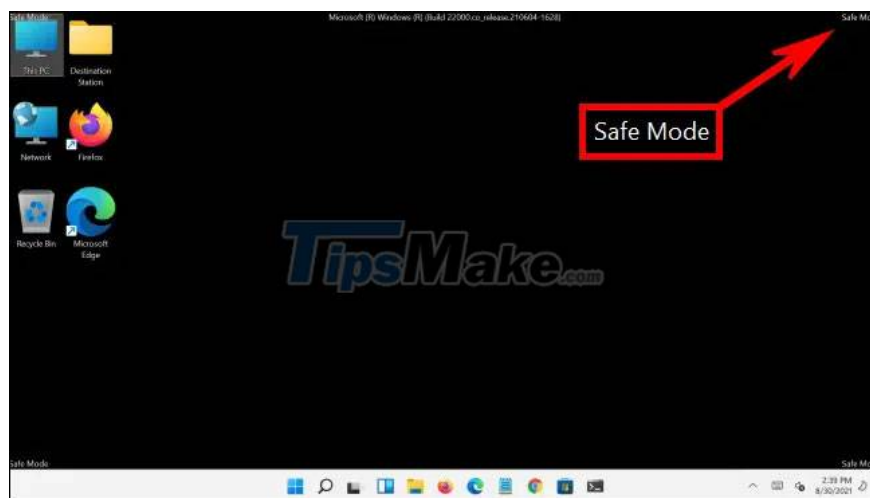
In Startup Settings, click 'Restart'.



The PC will reboot into the 'Startup Settings' menu with 9 numbered options. Press the '4' key on your keyboard to select Safe Mode, '5' for Safe Mode with Networking or '6' for Safe Mode with Command Prompt.



Once you've made your selections, Windows will reboot into the corresponding mode (Safe Mode). Your screen will be downgraded to a lower resolution and Windows will also replace the desktop background image with a black background that says 'Safe Mode' in the corners.



Now you can perform any troubleshooting task you want. When done, just reboot (or shut down) your Windows 11 PC as usual. If all went well and the problem is fixed, the next time you reboot, you'll be back in regular Windows mode. Good luck!

You finished reading the article "**How to access Safe Mode on Windows 11**" edited by the [TipsMake](#) team. We hope this article has provided you with many useful tech tips and tricks. You can search for similar articles on tips and guides. Thank you for reading and for following us regularly.