

How to access Linksys Smart WiFi through a web browser

Linksys Smart WiFi is accessible via web browsers in Windows, Mac and iPad. Another option is to access it via a mobile device through the Linksys app.

Linksys Smart WiFi is a free service that comes with a Linksys Smart WiFi router. After setting up the Linksys smart WiFi router, you can easily access it anywhere with an Internet connection using the Linksys cloud account and link your router to it.

Important Note : To avoid any problems accessing the router using Linksys cloud accounts, make sure that the router's firmware is up to date.

Linksys Smart WiFi local access

Follow the steps below to learn how to access your router locally.

Step 1 : Launch the web browser.

Step 2 : Enter the default IP address of the router, "**192.168.1.1**" or type "**myrouter.local**" in the address bar and press **Enter**.

Step 3 : Enter the router password and click **Log in** . The default password is **admin**. If you have changed it, enter a new password instead.

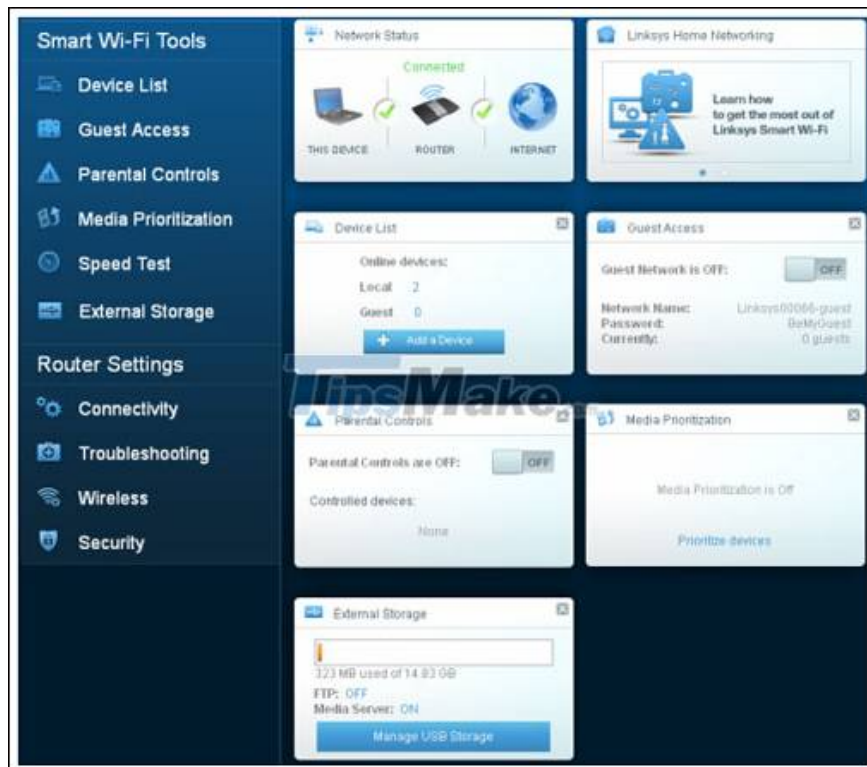


Alternatively, you can also log in with your Linksys cloud account.

When the **Linksys Smart WiFi Sign In** page appears, enter your email address and password and click **Log in** .



The **Linksys Smart WiFi** home page will now appear. You can now access and configure everything in **Smart WiFi Tools** and **Router Settings** .



Note : The device list is displayed as a **Network Map** tool(network map) on some Linksys smart WiFi routers. External storage is displayed as **USB Storage** with Linksys Smart WiFi routers with an older firmware version.

Linksys Smart WiFi remote access

Linksys Smart WiFi remote access lets you manage your WiFi so you can securely specify or modify your router settings anytime, anywhere. Follow the steps below to learn how:

Step 1 : Launch your web browser and type '**linksysmartwifi.com**' in the address bar and press **Enter**.

Note : Make sure you're connected to WiFi before doing this.

Step 2 : Enter your email address and password in the fields provided, then click **Log in** .



Enter your email address and password in the fields provided

The Linksys Smart WiFi home page will appear. You can now access and configure your router settings.

You finished reading the article "**How to access Linksys Smart WiFi through a web browser**" edited by the [TipsMake](#) team. We hope this article has provided you with many useful tech tips and tricks. You can search for similar articles on tips and guides. Thank you for reading and for following us regularly.