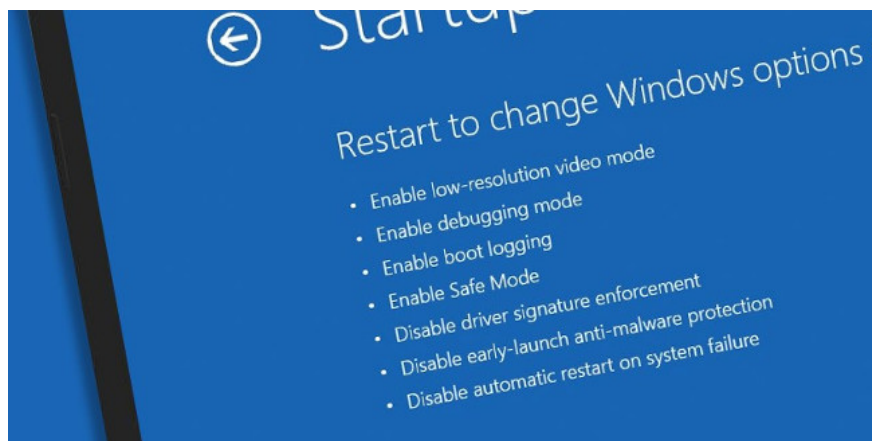


How is Windows Safe Mode and Clean Boot different?

Basically, Clean Boot and Safe Mode are quite similar, even performing the same function. One provides users with a clean environment to start Windows and one provides a safe mode for users to access and fix errors.

Basically, **Clean Boot and Safe Mode** are quite similar, even performing the same function. One provides users with a clean environment to start Windows and one provides a safe mode for users to access and fix errors.

However, Clean Boot and Safe Mode are used in situations, fixing various problems. It is important that you know when to use Safe Boot and when to use Safe Mode.



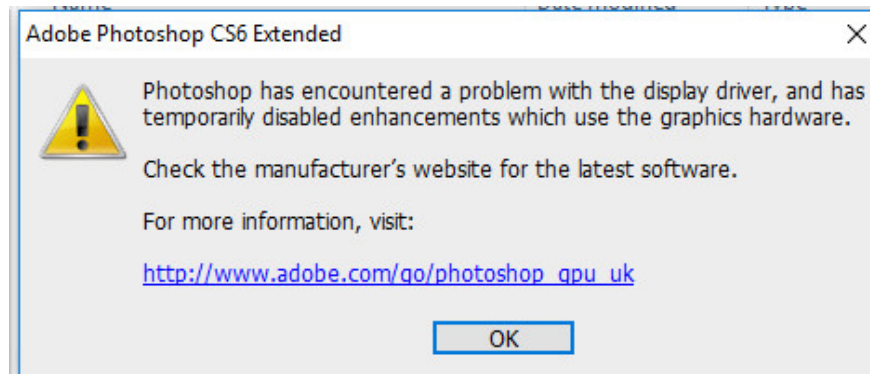
Part 1: Safe Mode

1. Safe Mode

If you're a **Windows** user, you're probably no stranger to Safe Mode. Safe Mode works by **disabling almost everything on Windows except the process core** with Windows running.

Clean Boot running Windows does not need GPU drivers, sound card drivers or any 3rd party software. Even the services that are integrated on Windows such as Search, Security Center, Windows Update and Sticky Notes do not work.

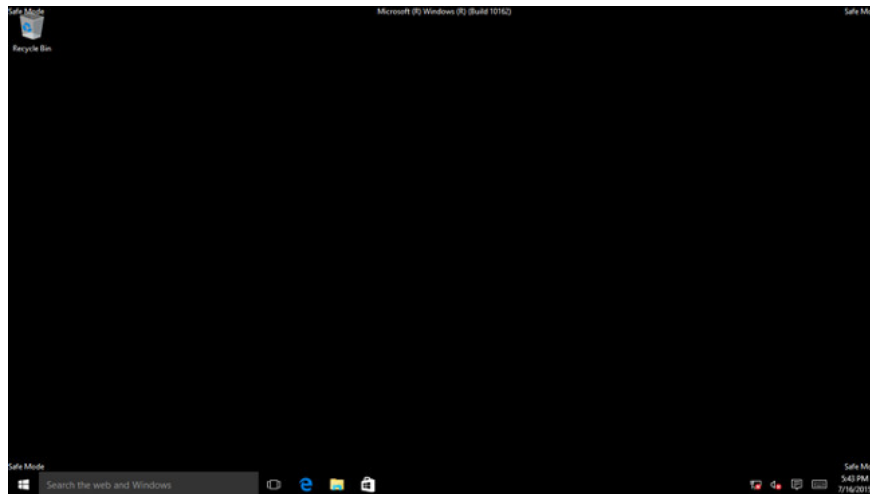
Contrary to what you think you can run most programs in Safe Mode, but in fact, this function is limited. To run programs in Safe Mode you need to make sure the program's driver is disabled. For example, in a Photoshop program, when you start the program in Safe Mode, on the screen you will receive an error message.



Safe Mode is mainly used to isolate problems, errors, slow and hanging machines, and persistent errors that occur on Windows computers.

2. When to use Safe Mode

1. Run an antivirus program when you suspect your computer is being attacked by malware (malware).
2. Hardware error checking - if your Windows computer still hangs in Safe Mode, it is probably a sign of hardware failure.
3. Perform System Restore if your computer cannot boot in normal mode.



3. How to access Safe Mode?

There are many ways to boot your Windows computer in Safe Mode, the simplest way is when your computer boots (before the Windows logo appears), **press the F8 key** . Then on the **Advanced Boot Options** screen, use the arrow keys to select the Safe Mode option and press **Enter** .

In addition, readers can refer to more details and some ways to start Windows 10/8/7 computer in Safe Mode here.

Part 2: Clean Boot

1. Clean Boot

Unlike Safe Mode, Clean Boot is not an '*official*' option of Windows, but an option that you can choose from. Clean Boot includes the process of disabling all Windows startup programs (startup programs) and third-party services during Windows startup.

You can perform Clean Boot if during the boot process the computer randomly appears an error or if the programs on the computer hang up and include an error message.

After performing Clean Boot, your Windows computer will work normally again and you can reactivate each program and service that you want to start with Windows.

If the error appears again during the re-activation of the program and service, you can identify which program or service is the cause of the error and can be remedied by uninstalling or updating the program. that process, service.

2. When to use Clean Boot?

When software or programs fail on Windows computer hangs.

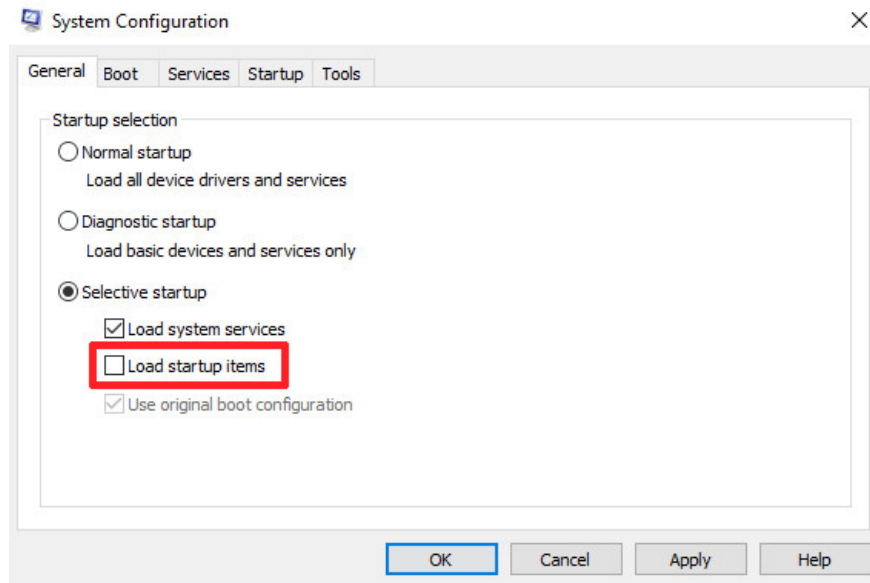
3. How to implement Clean Boot?

To perform Clean Boot, follow the steps below:

Press **Windows + R** key combination to open the **Run** command window, then enter **msconfig** into the Run command window and press Enter to open the **System Configuration** window.

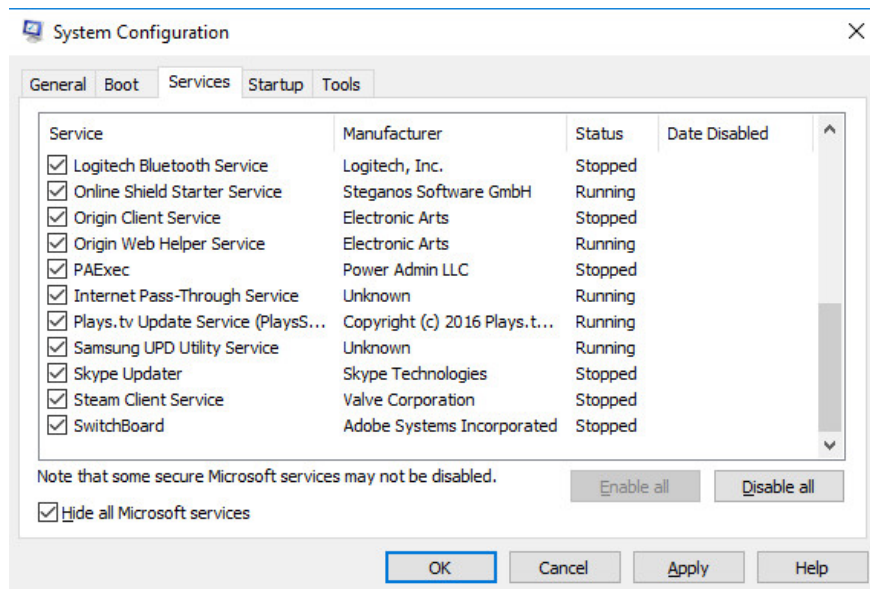
On the System Configuration window, click **Selective startup** , and then **uncheck** the **Load startup items** entry.

Next, click on the **Services tab** , then select **Hide all Microsoft services** in the bottom corner of the window, then click **Disable All** to disable all non-Microsoft startup services. Click **OK** then proceed to restart your Windows computer.



Now Windows will boot into **Clean Boot** , so you can find, discover which applications, programs or software are the "culprits" that caused the error and find ways to fix the problems and problems you are encountering.

If you want to configure Windows to a normal boot state, follow the same steps and in the **System Configuration** window select **Normal Startup** .



Readers can refer to how to implement Clean Boot on Windows 10/8/7 computers here.

Refer to some of the following articles:

1. Instructions for setting F8 key to start Windows 8 in Safe Mode
1. Quick fix computer error Windows 10/8/7 crashes, Safe Mode can not be escaped
1. All problems with starting Windows in Safe Mode

Good luck!

You finished reading the article "**How is Windows Safe Mode and Clean Boot different?**" edited by the [TipsMake](#) team. We hope this article has provided you with many useful tech tips and tricks. You can search for similar articles on tips and guides. Thank you for reading and for following us regularly.

© 2019 TipsMake.com