

# How does the firewall in Windows Security work?

Although firewalls are common to all operating systems, Microsoft Windows is one of the few operating systems that comes with a firewall that does not require much configuration.

## How does the Windows Security firewall work?

Windows Firewall, like other versions in Linux, works by filtering network traffic in and out of the system. It operates at a privileged level so that it can capture all incoming and outgoing data packets.

If there's a piece of software that wants to access the Internet and Windows Firewall doesn't yet recognize that piece of software in its rule set, it will pause the application, then ask you if you want to give it access to your network. or not. This allows for more control and acts as an additional layer of protection for your personal privacy.

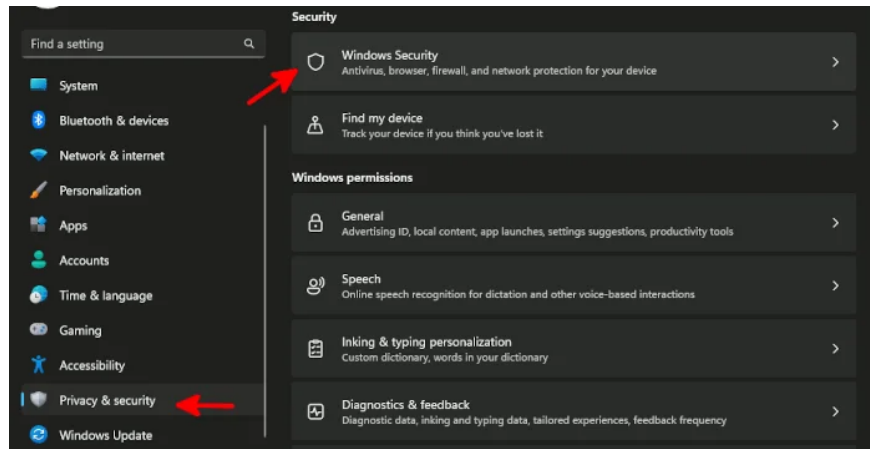
In addition to filtering applications, Windows Firewall also uses a concept called Internet Protocol security (IPsec), which requires other devices to pass certain criteria, including authentication, when attempting to communicate. contact your device.

For mobile devices such as laptops and tablets connected to Wi-Fi networks, it is also capable of intelligently determining whether you are at home or in public, automatically setting configuration will help provide extra protection (like requiring connection encryption) when you're out and about.

In essence, you can think of your device as a nightclub and Windows Firewall as a security guard that helps keep people you don't want out of your party.

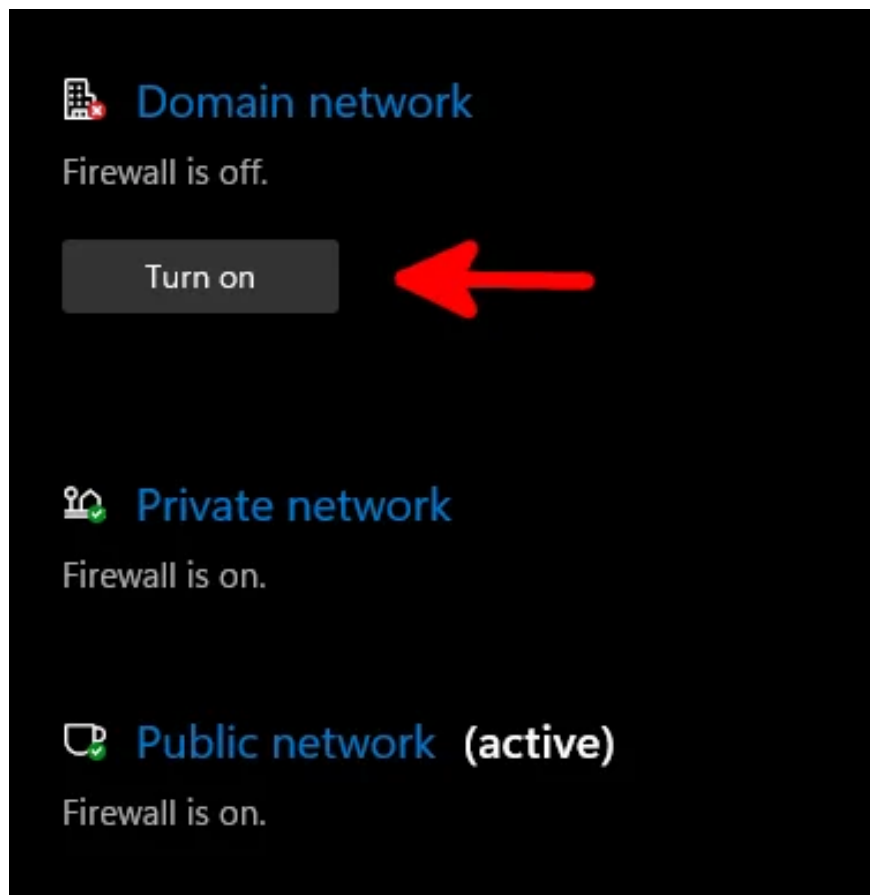
## How to check if Windows Firewall is enabled or not

To ensure that the firewall is fully functional, click the **Start** menu , then click **Settings** . Navigate to **Privacy & security** -> **Windows Security** .

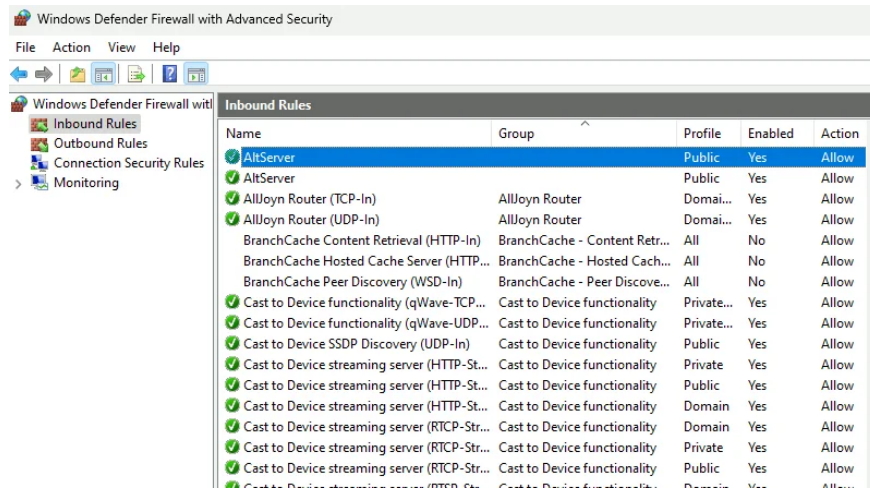


When you go into Windows Security, right under **Protection areas** , you can see the status of every part of Windows Security. Under **Firewall & network protection** , if you get a label that says 'No actions needed' along with a green check mark on the icon then you're done.

If your firewall is partially disabled for some reason, just click the icon and it will take you directly to the **Firewall & network protection** menu in Windows Security. You can enable any missing network protections you want.



At this point, you can also review some of the rule sets your firewall has by clicking **Advanced settings** near the bottom of the window. You can add new rules that the firewall hasn't asked you yet, or disable rules that you may have added by mistake to get that enhanced security feature.



After working with it for a while, you'll find that this security feature is incredibly easy to configure and flexible, suitable for almost any use case imaginable – even for power users. highest class.

You finished reading the article "**How does the firewall in Windows Security work?**" edited by the [TipsMake](#) team. We hope this article has provided you with many useful tech tips and tricks. You can search for similar articles on tips and guides. Thank you for reading and for following us regularly.