

# Himalayan vegetation is expanding rapidly, is this a good sign or the beginning of a disaster?

Recent studies show that the snow-white plateau in the Himalayas is gradually being turned green by the growth of vegetation, which looks like a good signal, but is this really good? at this place?

The world has a total of 14 peaks with a height of over 8,000 meters, including 10 peaks in the Himalayas and the remaining 4 peaks in the nearby Karakoram mountain range.

The Himalayas are also described as the third pole of the Earth, and even in fact, this mountain range possesses the third largest amount of snow and ice after the North and Antarctica, in addition to this mountain range has the influence the lives of over one billion people in Asia, including China and India.



Recently, a study from the University of Exeter in the UK showed that the vegetation in the Himalayas (Himalayas) is growing continuously at a very fast speed, breaking the snow flow there, at the same time the the snow and white plateau is also gradually turning green.

Maybe on other places on Earth, the fast growing vegetation and greening vast areas is a good sign for nature, but here, this has the opposite meaning. Absolutely not a good sign in the Himalayas.



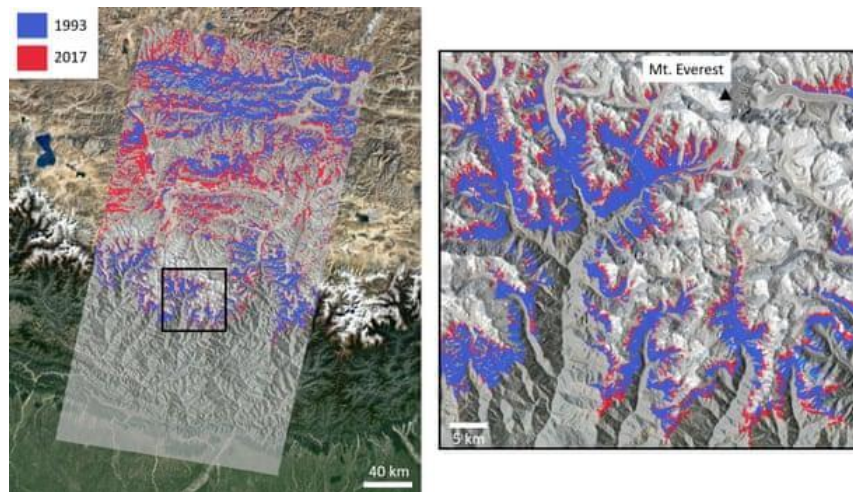
Previously, the Arctic sea area was also constantly turning green and the phytoplankton in the water also developed very strongly by the melting of ice and snow. However, this is a very bad result due to human activities, so these phenomena are completely not the restoration of nature on Earth.

The reason why plants and phytoplankton can grow and grow in these barren lands is because global warming has caused a glacial melting of snow, providing them with soil to hold on and water for development, this will mean that the ecosystems in these lands will be subject to drastic changes and can lead to the change and reform of a local ecosystem. inherently familiar.



Researchers used NASA satellite images between 1993 and 2018 to measure plant growth in the Himalayas.

The results show that the plant area in the Himalayas is constantly expanding and "wildly" surrounding every corner. Previous studies have also shown that the loss of ice and snow in the Himalayas doubled between 2000 and 2016, and that the entire glacier has lost a quarter of its ice in the past 40 years.



But the researchers also found that in another study conducted in Tibet, many vegetation has a mechanism of cooling itself through the evaporation of leaf surfaces, which may not increase the risk. warming and flooding in the Himalayas.

These contradictory studies mean that we still do not know enough about the effects of global warming and that more research is needed, especially about the "third pole" of the Fruit. The land - the Himalayas, was previously ignored.

Unlike the warming of the North and Antarctic, the melting of snow and ice here will directly affect the livelihoods of 1.4 billion people around the 10 largest rivers in Asia. Therefore, if the ecosystem here is destroyed, it will surely bring unpredictable consequences.

You finished reading the article "**Himalayan vegetation is expanding rapidly, is this a good sign or the beginning of a disaster?**" edited by the [TipsMake](#) team. We hope this article has provided you with many

useful tech tips and tricks. You can search for similar articles on tips and guides. Thank you for reading and for following us regularly.

---