

Guide to change the direction of the scrolling page of Touchpad Windows 10

To be able to scroll a certain page or window on Windows 10, in addition to using the mouse we will perform the operation of moving the finger from top to bottom at Touchpad. However, we can also change this default operation with a fairly simple operation.

There are many people who prefer to use Touchpad than using a mouse, especially with Windows 10 operating system, the Touchpad is provided with many newer functions. This has helped users to perform many operations more conveniently, as well as experience many exciting changes.

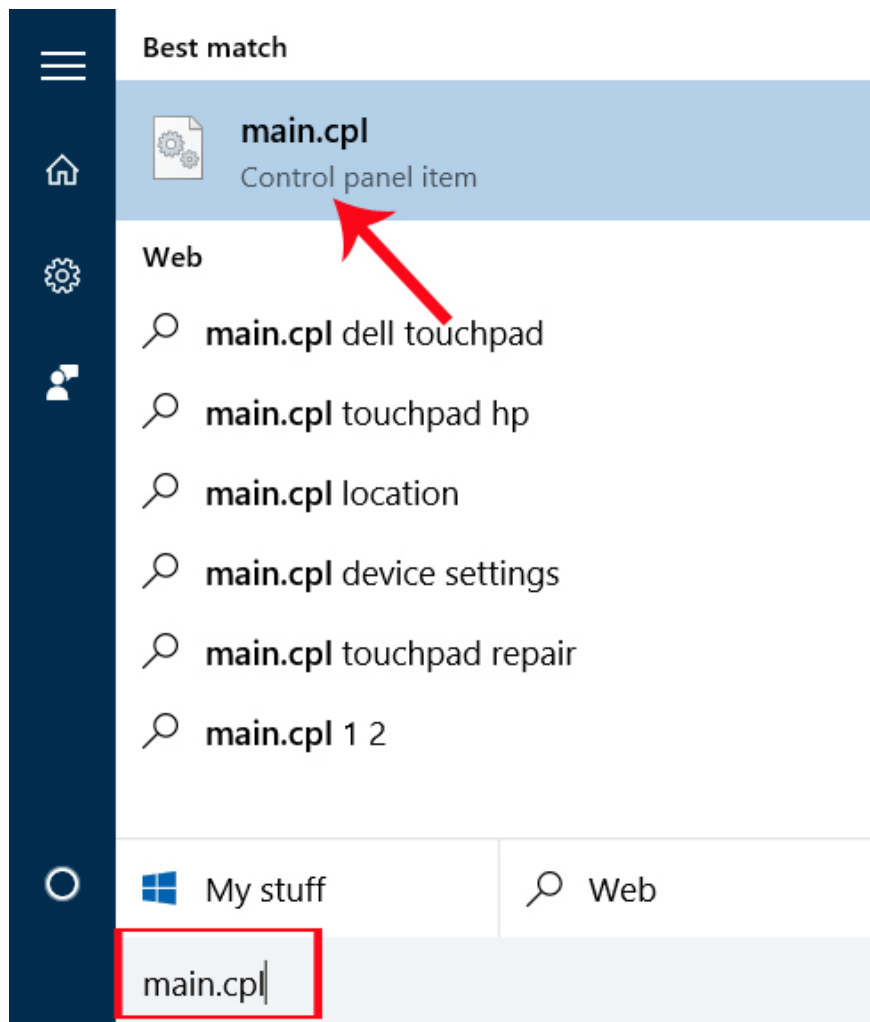
And if you regularly use the touchpad, it certainly won't be strange for the page scrolling, windows on Windows 10. By default, we will move our finger from top to bottom at the table to change the page scrolling direction. . However, if you want to change to suit your usage, we can change easily, right on the setting of Windows 10.

However, the following way that we guide only applies to models equipped with Touchpad from Synaptics manufacturer only, the other Touchpad will not be usable.

Method 1: Change the Touchpad on Mouse Properties

Step 1:

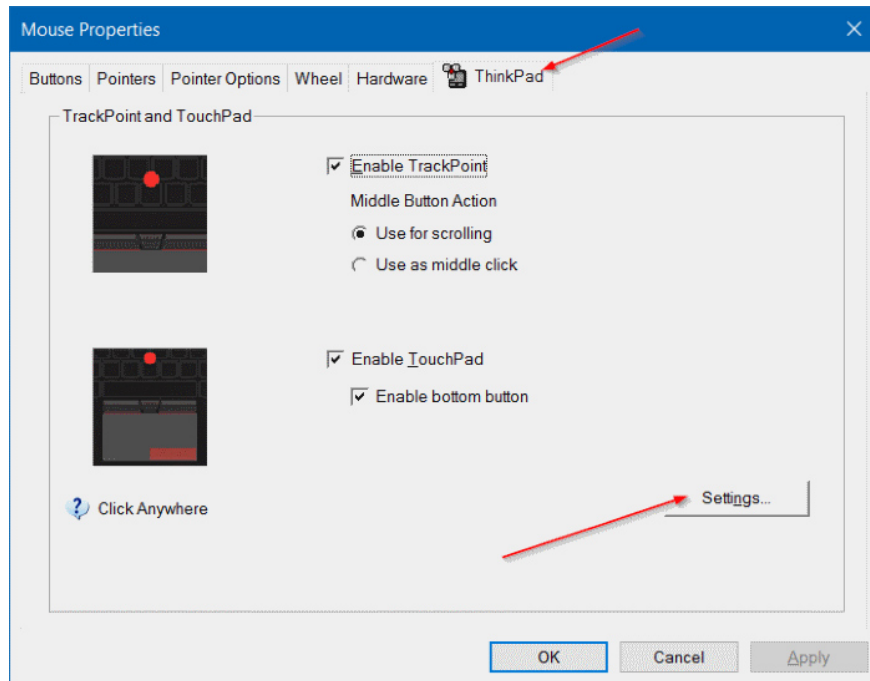
At **the Search Windows** bar or Run window, we will type the **keyword Main.cpl** and press **Enter** to open Mouse Properties.



Step 2:

In the **Mouse Properties** interface, we will select the external **ThinkPad** tab. Depending on the line of computers we choose to click on the last card in this interface, it may be Device Settings, Touchpad Settings, and Touchpad.

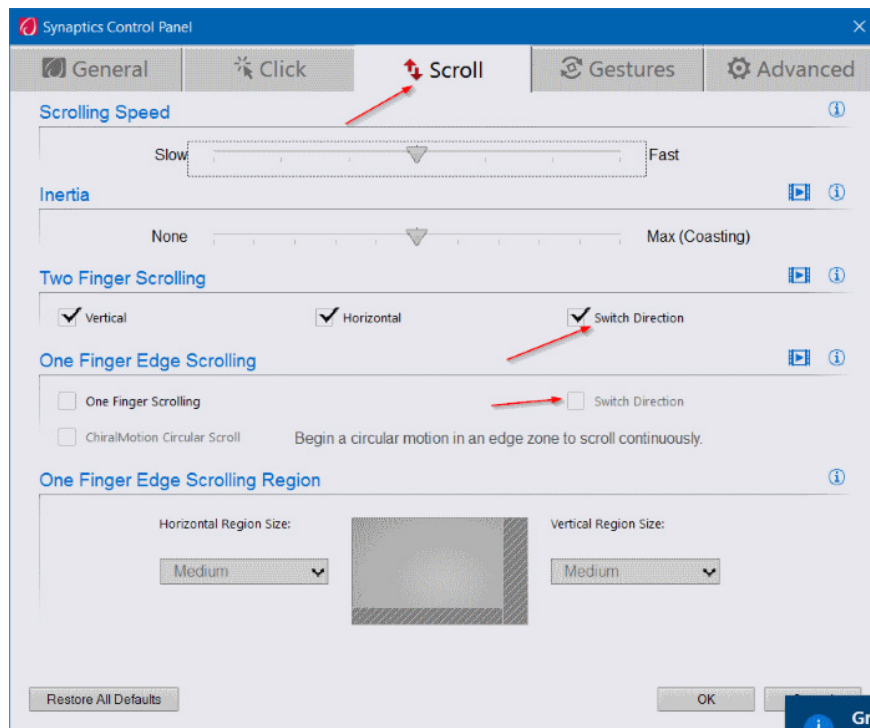
Next click **the Settings button** below. In some other laptops, users need to select Touchpad input from the list of devices to activate the Settings button.



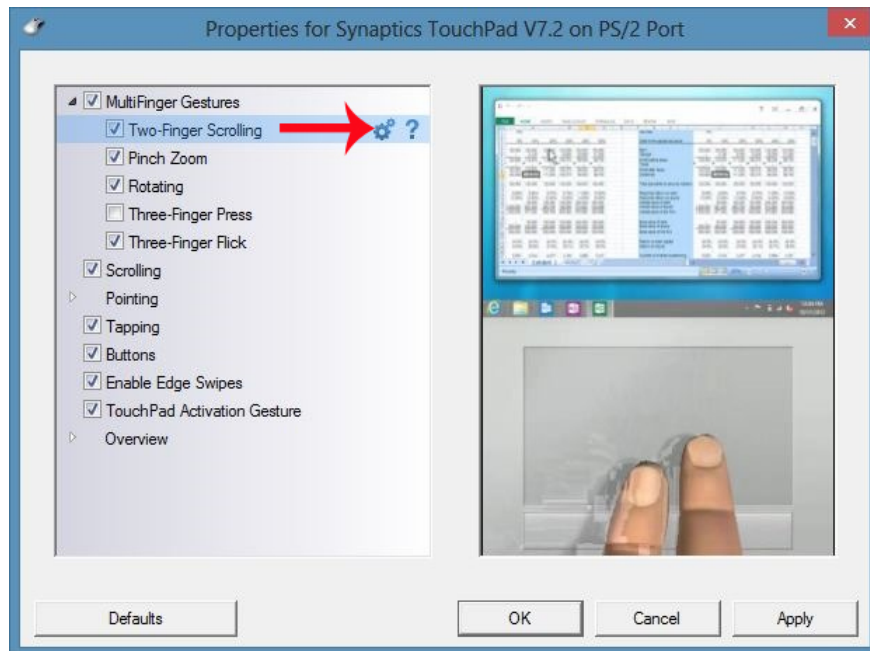
Step 3:

Next in the **Synaptics Control Panel** window of Touchpad settings, click on the **Scroll** tab .

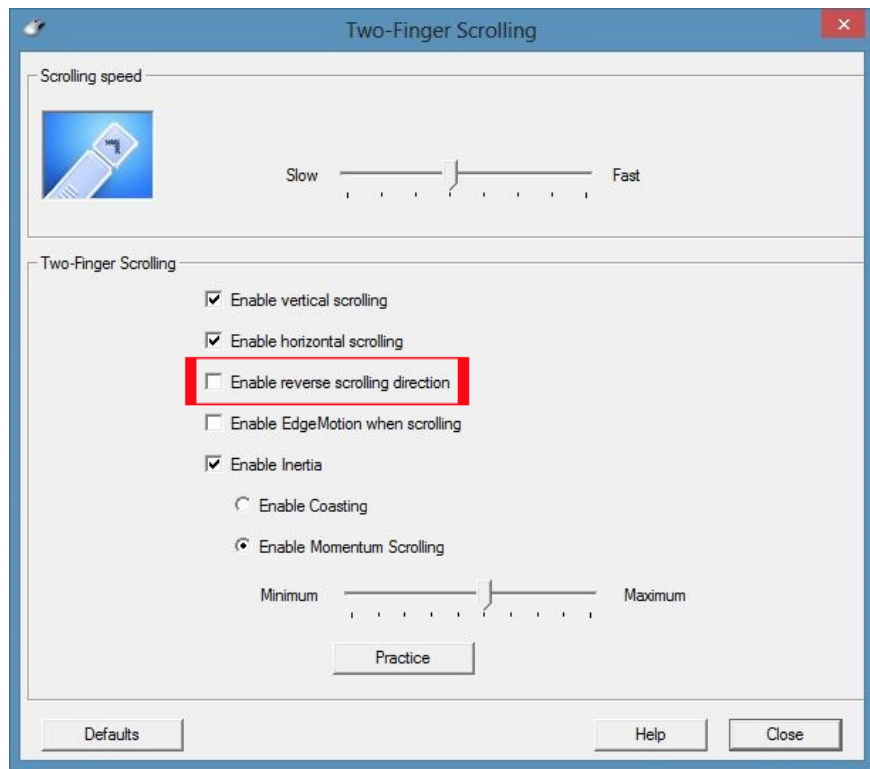
Looking down at the interface below, we'll find **Switch direction** , Reverse direction or Reverse scrolling direction, then **click or uncheck to change the direction of the mouse scroll** .



With the **old Touchpad versions** , on the **Properties** interface for **Synaptics TouchPad** , click on **MultiFinger Gestures** . At the **Two-finger scrolling** just below, click the **gear icon** next to that option.



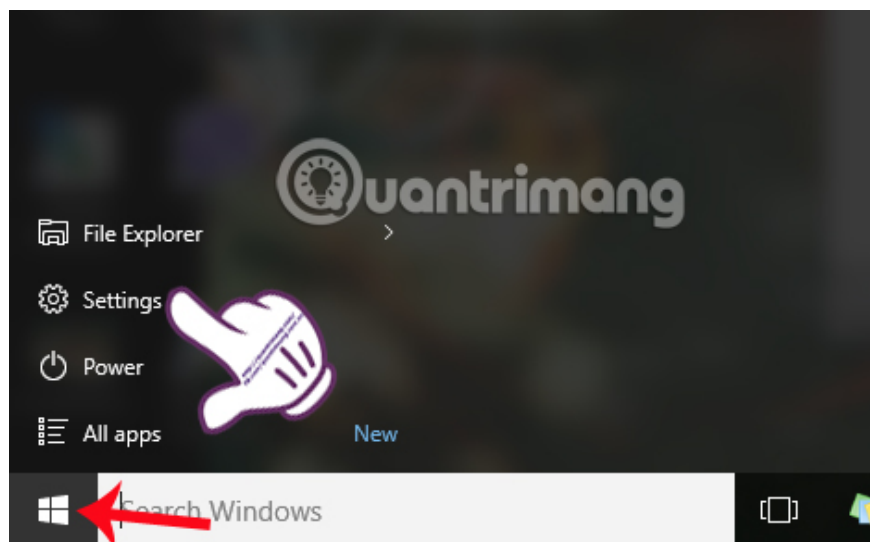
After that, we will find the **Enable reverse scrolling direction** item or uncheck the option.



Method 2: Change the direction of Touchpad Windows 10 scrolling using Settings

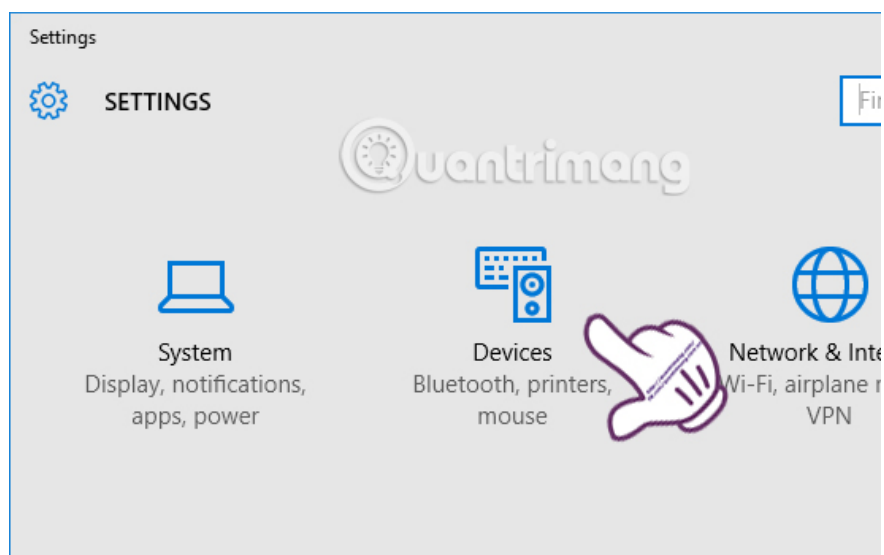
Step 1:

Click on the **Start menu** and select the **Settings icon** , or press the Windows + I.



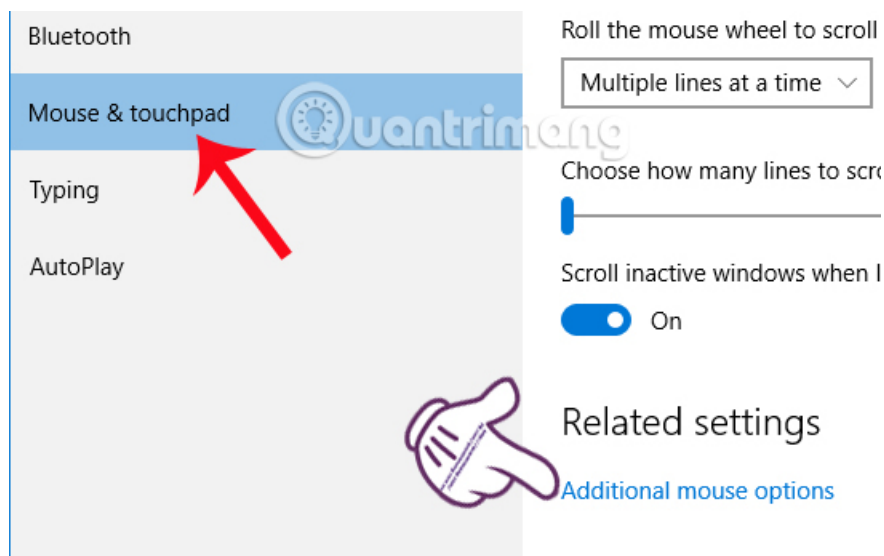
Step 2:

In the Settings interface, we will select **Devices** .



Step 3:

In the new interface, at the left menu bar we will find the **Mouse & touchpad option** . Look to the right, go to the **Related settings** section Click on the **Additional mouse options link** .



Step 4:

In the Mouse Properties interface, we also **changed the options settings for Touchpad similar to the steps with Option 1** above.

In fact, even if we do it 1 or 2, we will move to the Mouse Properties interface, so that we can freely change and customize all settings available on Touchpad Windows 10, if the user needs it. Choose a simple, convenient way to change the page scrolling direction and many other settings with Touchpad Windows 10.

Refer to the following articles:

1. How to open the virtual keyboard in Windows 10
1. Start Windows 10 "as fast as the wind" with Fast Startup
1. Instructions for activating and customizing virtual Touchpad on Windows 10

I wish you all success!

You finished reading the article "**Guide to change the direction of the scrolling page of Touchpad Windows 10**" edited by the [TipsMake](#) team. We hope this article has provided you with many useful tech tips and tricks. You can search for similar articles on tips and guides. Thank you for reading and for following us regularly.