

Get familiar with Corel Draw - Lesson 2: Rulers, nets and lines

The ruler consists of vertical and horizontal ruler. The vertical ruler shows the cursor position corresponding to the X axis on the property bar, the horizontal ruler shows the cursor corresponding to the Y axis on the property bar.



The ruler used to determine the position of the object or the pointer.

The ruler consists of vertical and horizontal ruler. The vertical ruler shows the cursor position corresponding to the X axis on the property bar, the horizontal ruler shows the cursor corresponding to the Y axis on the property bar.

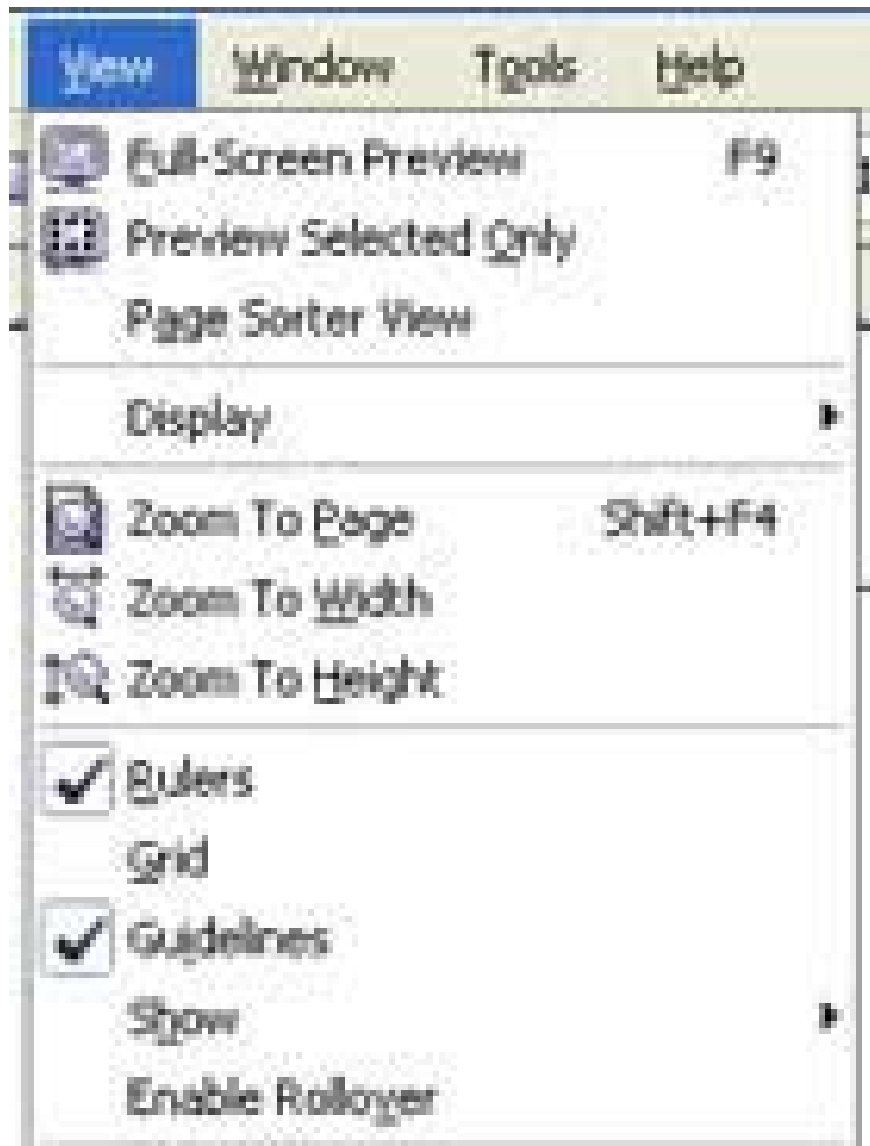


Figure 1

Rulers

By default, the Corel program is always displayed.

To turn on or off the ruler select View - Rulers (Figure 1)

The ruler used to determine the position of the object or the pointer.

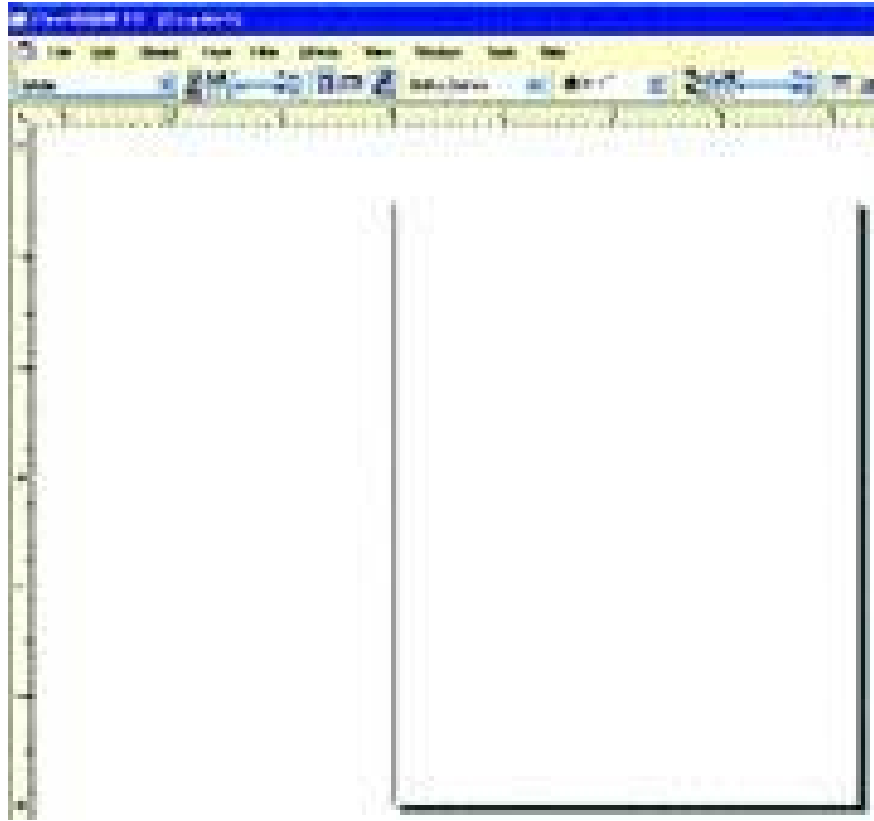


Figure 2

The ruler consists of vertical and horizontal ruler. The vertical ruler shows the cursor position corresponding to the X axis on the property bar, the horizontal ruler shows the cursor corresponding to the Y axis on the property bar.

Corel defaults to the lower left corner of the drawing page with the coordinates (0,0) (Figure 2).



Figure 3

The unit of measure is the default unit of Drawing Unit. To change the unit of measurement click on the downward arrow in the Drawing Unit (Figure 3).

To set the properties for the Tool - Options ruler (Figure 4).



Figure 4

- Units: determine the measurement unit of the ruler. If you choose Sam units for Horizontal and Vertical rulers, the unit of measurement in the Horizontal cell is used for both rulers and vice versa will choose two different units for two rulers.
- Origin: locate the origin (0,0) for the ruler.
- Show Rulers: turn off the ruler.
- Tick Division: division intervals.
- Edit Scale: Open the Drawing Scale dialog box to determine the drawing rate.

Grid (Grid)

Grids are horizontal and vertical lines but cannot be displayed when printing. To display the grid select View - Grid.

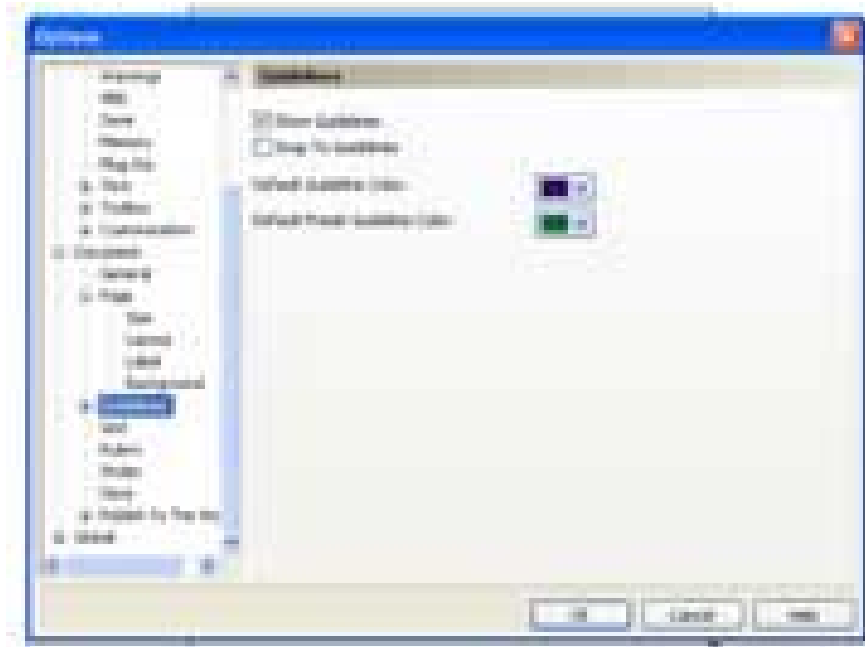


Figure 6

The alignment will help determine the exact location of objects during drawing. To show the selection line, View - Guidelines. Create a drawing line by clicking on the pull-down ruler on the drawing page. Delete the curve by clicking on the path (the path changes to red) and press Delete.

To set the properties for the Tool - Options ruler (Figure 6).

- Show Guidelines: turn off the line.
- Snap To Guidelines: Turn off the capture mode with the alignment.
- Default Guidelines Color: the default color of the line.

Lam Khe

You finished reading the article "**Get familiar with Corel Draw - Lesson 2: Rulers, nets and lines**" edited by the [TipsMake](#) team. We hope this article has provided you with many useful tech tips and tricks. You can search for similar articles on tips and guides. Thank you for reading and for following us regularly.