

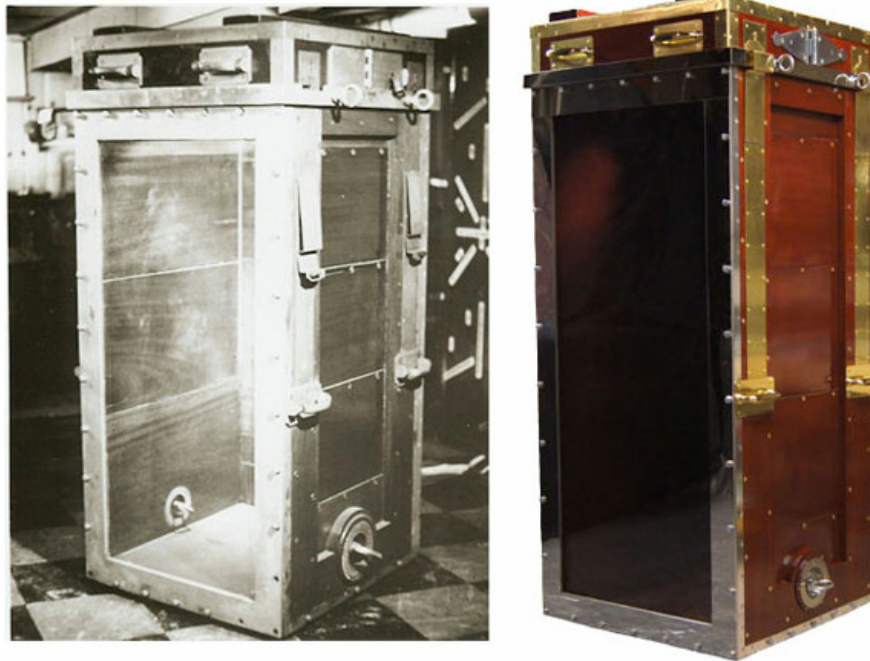
Flipping the classic escape magic: sticking your feet, handcuffs, hanging upside down in the water box and still escaping safely

In the state of being handcuffed and locked up like that, how did Houdini get out of the cramped box filled with water?

"Torture water box" - one of the most unique creations by Harry Houdini, a great magician with world-leading liberation skills at the end of the 19th and early 20th century. dangerous situation, close to death makes the audience nervous to follow his performance.

1. Discover the secret of handcuff magic tricks locked in closed containers
2. Flipping the magic trick suspended above does not have magic
3. Reveal the secret magic of classic magic going through the Great Wall of the "witch" David Copperfield

The glass box used in this classic magic show was created by himself and placed at a price of \$ 10,000 and patented.



The box has a frame made of mahogany and nickel, copper-plated details, the front of the box is a safety glass sheet (the type of glass when broken will break into non-sharp pieces) up to 1.5 cm thick.

To impress and affirm that there are no special exits available, Houdini will often begin the magic show by having an audience choose where to put the box on stage.



Houdini will be handcuffed and locked in a wood-made gong that acts as a lid with four locking pins around, only open from the outside. He was taken up into the air, then lowered him into a glass box filled with water with a pulley.



After that, the tank was covered. Outside, an assistant with an ax in hand always ready to break the glass in case of an accident.

From the start of the performance, the audience was always nervous to stand by the heart because the feeling of accident could happen at any time.

But after only two minutes, Houdini appeared from behind the perfectly healthy veil while the glass case was intact and there was no sign of breaking, surprising and delighted by the audience.

In the state of being handcuffed and locked up like that, how did Houdini escape the cramped box filled with water?

There are two important factors that help Houdini successfully implement his dangerous magic.

Firstly, the locker on the leg used when attaching to the glass case will be responsible for covering an air that appears inside the box. This air is the part of the water that was spilled out when Houdini was brought inside.

Secondly, at first glance this gong is very sturdy and very hard to break with force but in fact it is specially designed to be easily opened.



When the curtain was covered, Houdini used the sides of the tank to push up his legs, turning to turn on a secret lock and get out of the gong. With the handcuffs, things are much simpler, just a 'light shake' is done.