

Flash - Simulation of Windows boot process (P2)

This article shows you how to create a flash file that describes the boot process into Windows graphical interface.

1. Create a file with the parameters shown in Figure 1:

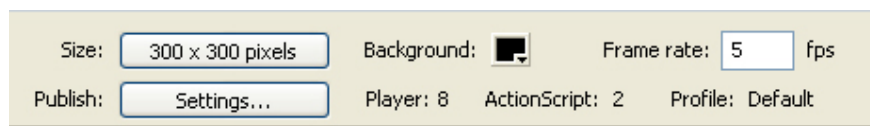


Figure 1

2. Rename the layer to the *background* and create a new layer named *square*

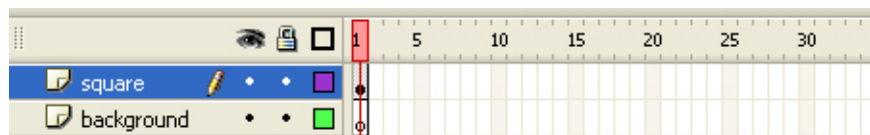


Figure 2

3 Using the **Rectangle Tool** , adjust the fill color to green, remove the border color and draw a square

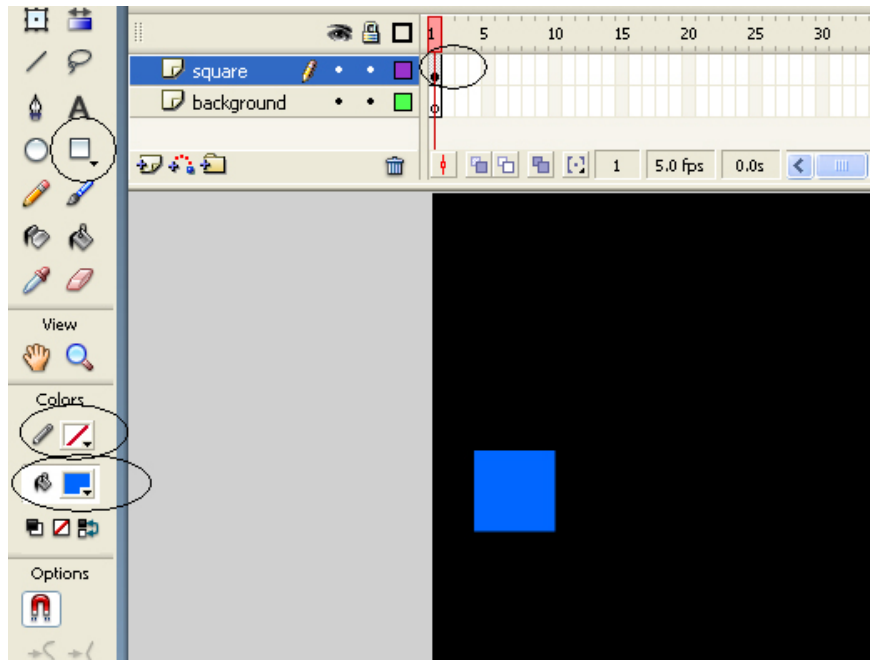


Figure 3

4 Using the **Selection Tool**, drag the rectangles that are right above the blue rectangle and press the **Delete** key

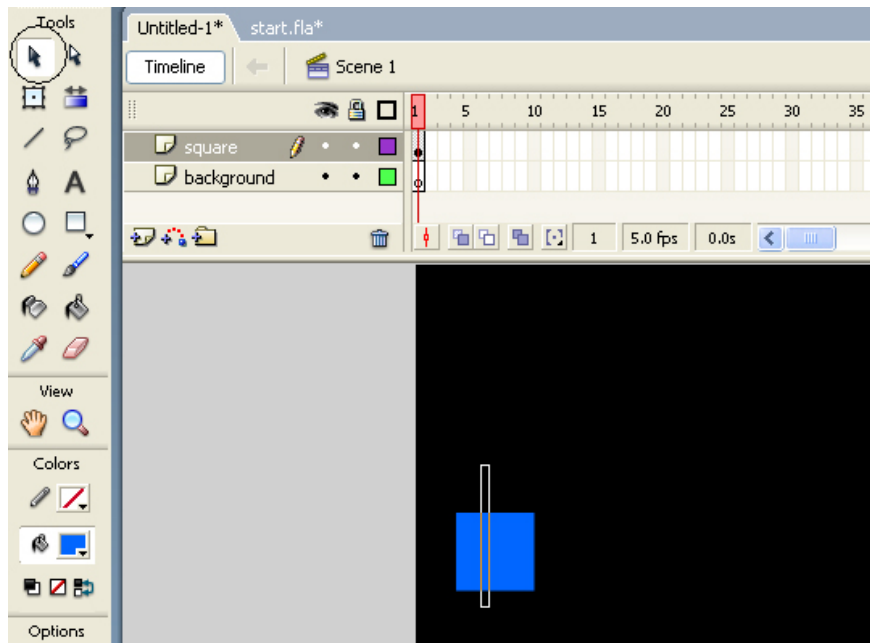


Figure 4a

(Results obtained after pressing Delete)



Figure 4b

5. Right-click Frame 15 (of the *square* layer) and select **Insert KeyFrame**

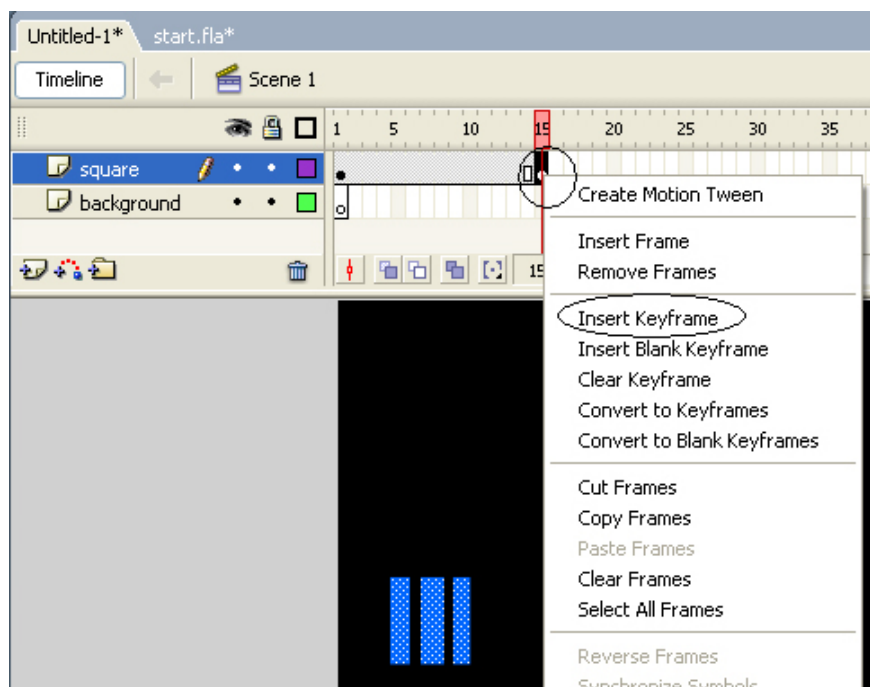


Figure 5

6. Use the mouse to drag the square to the right

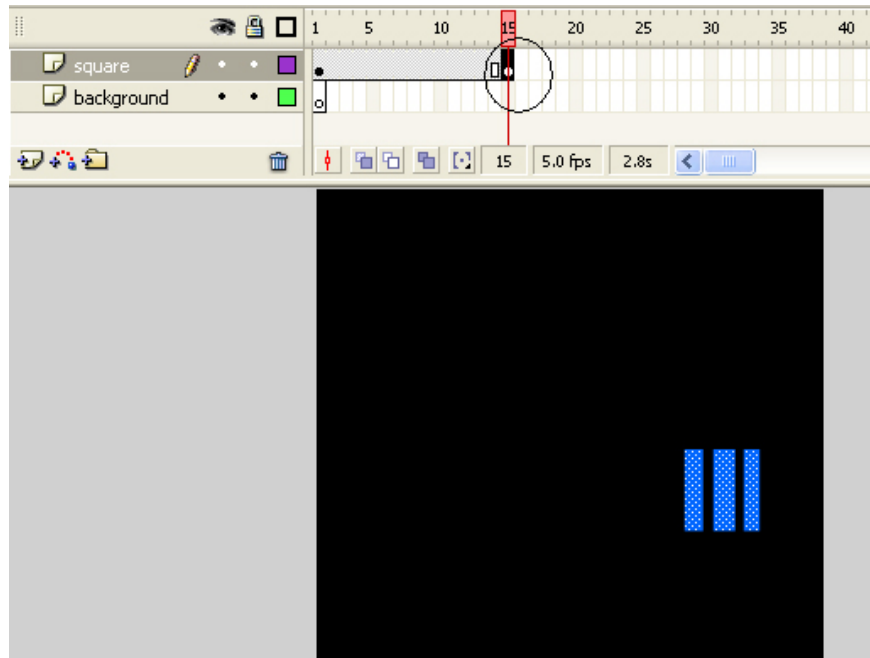


Figure 6

7. Right-click any location between Frame 1 and Frame 15 and select **Create Motion Tween**

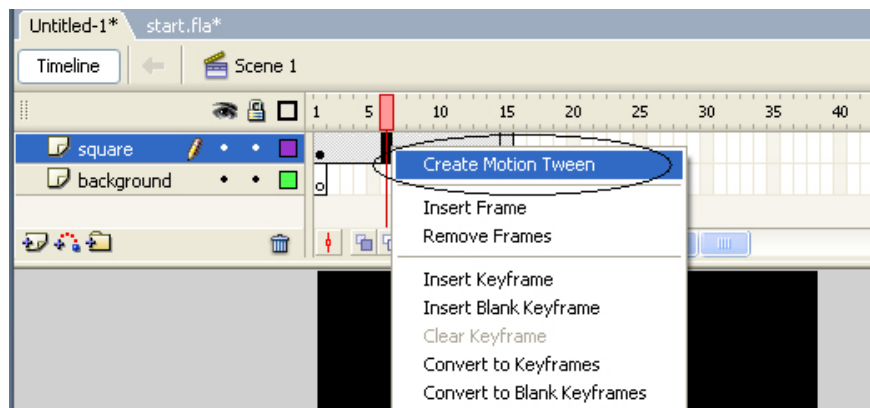


Figure 7

8. Lock 2 available layers again and create a new layer called *rectangle* (see Figure 8).

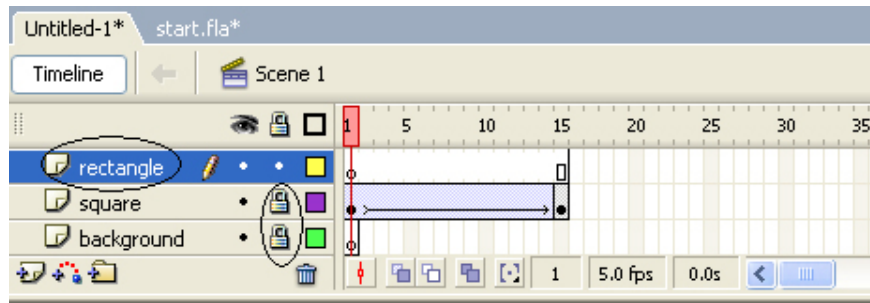


Figure 8

9. Click Frame 1 of this layer and use the **RectangleTool** tool (adjust the fill color to white, remove the border color) to draw a rectangle.

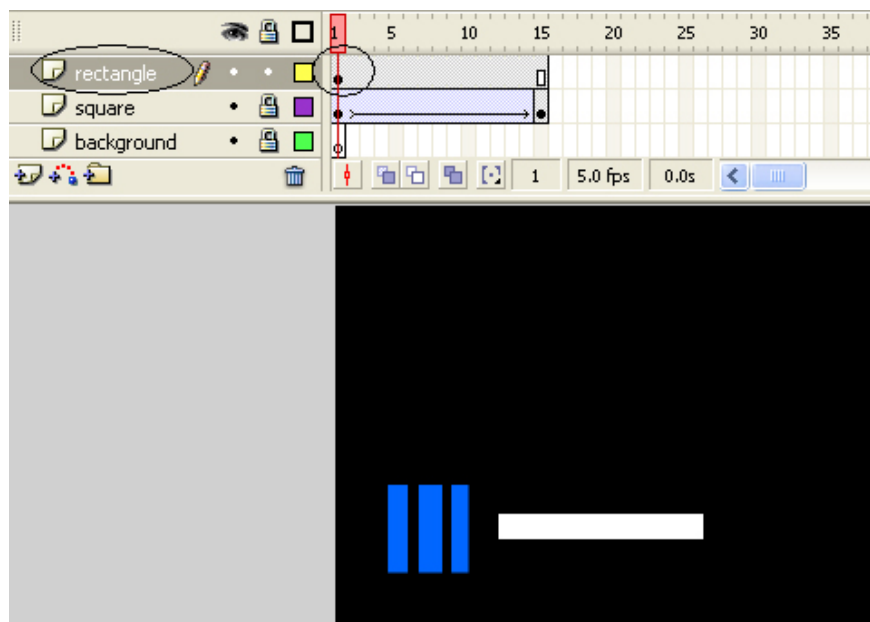


Figure 9

10 Lock the *rectangle* layer and create a new layer named *frame*

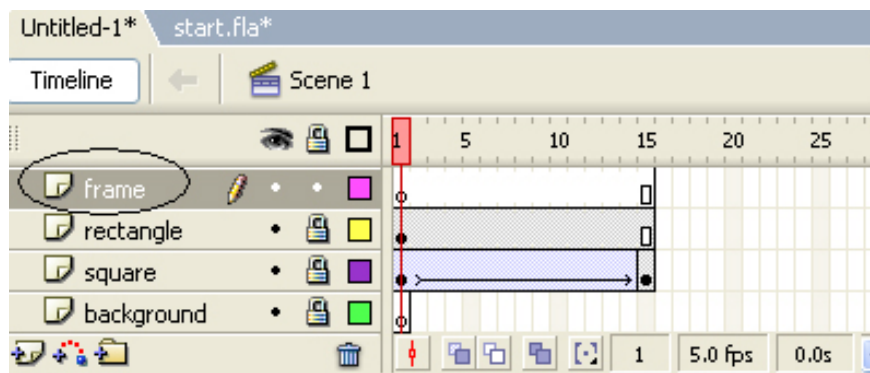


Figure 10

11 Using the Rectangle Tool (remove the fill color, set the border to white, adjust the **Stroke height to 3**) draw a rectangular frame around the rectangle of the *rectangle* (see Figure 11 temporarily hiding the *rectangle* for you. see results)

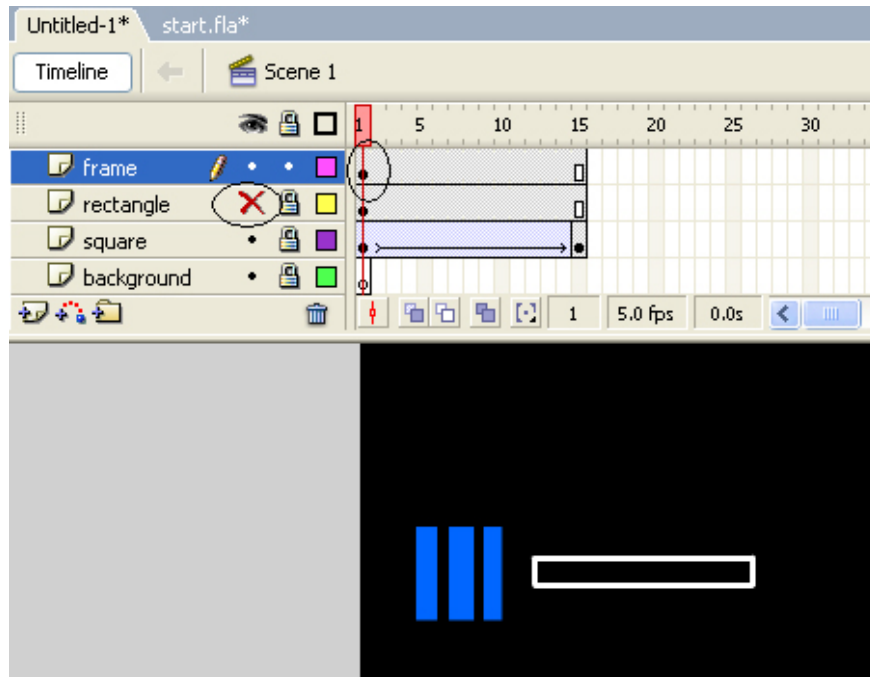


Figure 11

12. Lock the *frame* layer again and create a new layer named *text* . At Frame 1 of the *text* layer, select the **Text Tool** to create the text

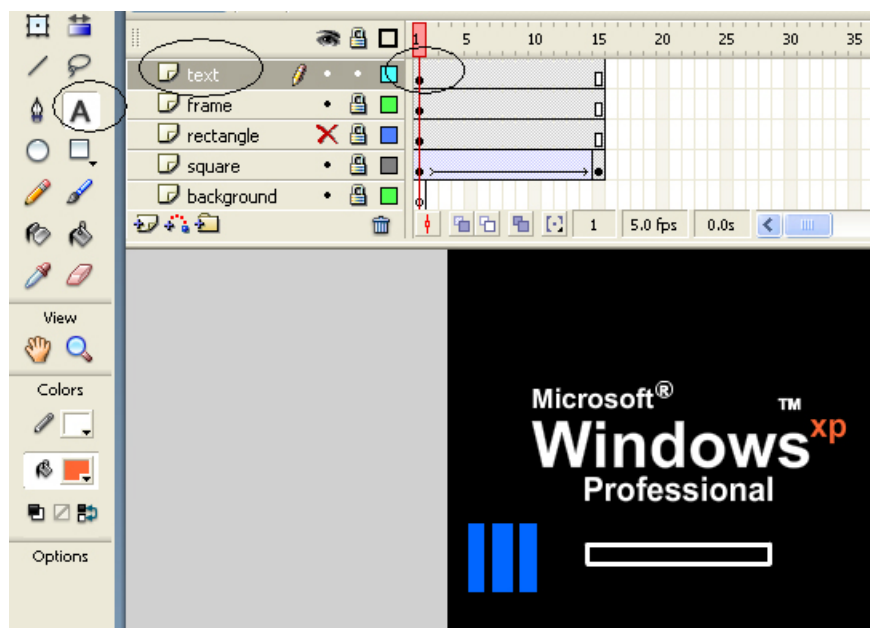


Figure 12

13. Lock the *text* layer and create a new layer called *flag* , use the **Rectangle Tool** to draw the flag

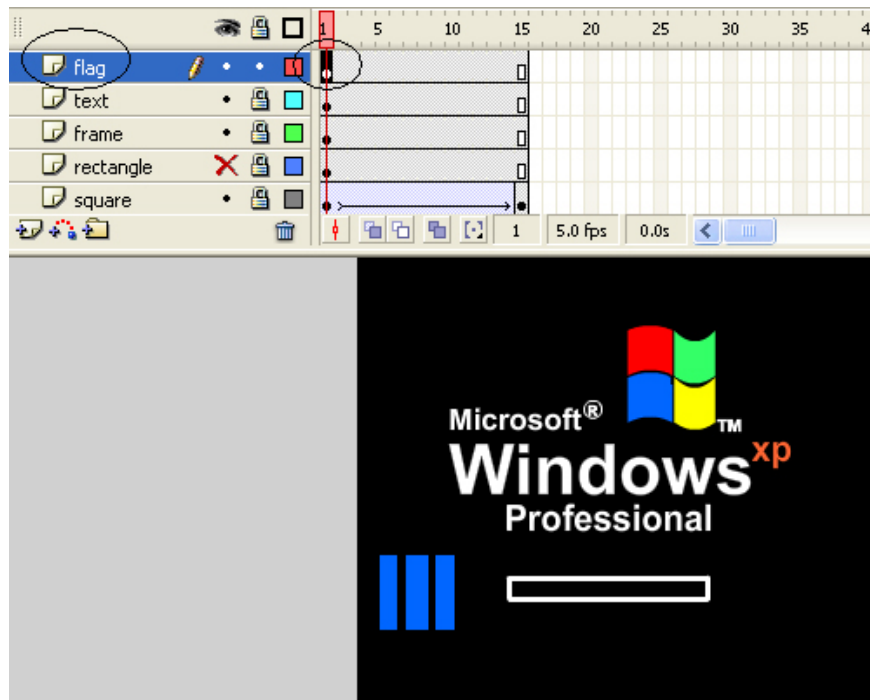


Figure 13

14. Right-click on *rectangle* layer and select **Mask**

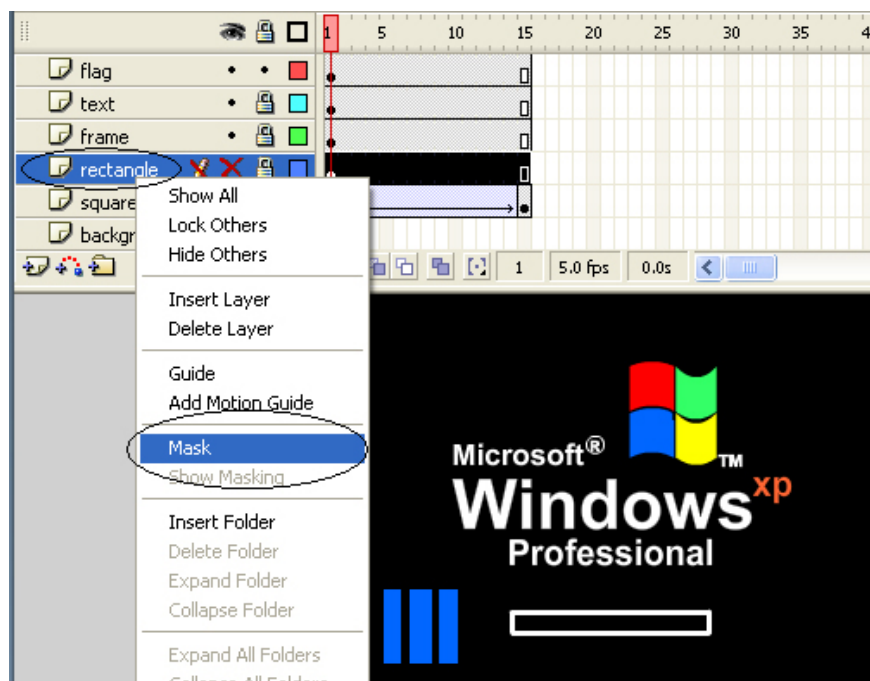


Figure 14

15. Press **Ctrl + Enter** to see the result and download the source file **here** .

You finished reading the article "**Flash - Simulation of Windows boot process (P2)**" edited by the [TipsMake](#) team. We hope this article has provided you with many useful tech tips and tricks. You can search for similar articles on tips and guides. Thank you for reading and for following us regularly.
